

The logo for KAPHS features a stylized red 'K' with a white swoosh, followed by the letters 'APHS' in a black serif font.

KAPHS

DECORATIVE WIRE MESH

**WE WEAVE
THE METAL
OF ARCHITECTURE.**

Contents

A complete guide to the KAPHS Decorative Wire Mesh range — concept, applications, finishes, and the full sixteen-pattern collection of woven stainless steel and aluminium mesh.

01	Introduction	03
02	Product Description	04
03	Applications	05
04	Finishes	10
05	Product Range	13
06	Project References	30
07	Materials & Customisation	33
08	Contact	34

INTRODUCTION

Texture, depth and pattern in architectural metal.

KAPHS Decorative Wire Mesh is a premium range of architectural metal mesh designed to enhance interior and exterior spaces with texture, depth and visual impact. The collection combines precision engineering with refined design — from open, lightweight weaves to dense, statement structures.

Manufactured in Stainless Steel 304 / 316 and aluminium, each pattern is engineered for consistency in thickness, structural integrity and visual quality — suitable for both decorative and functional applications.

16

PATTERNS

2

MATERIALS

5

FINISH ROUTES

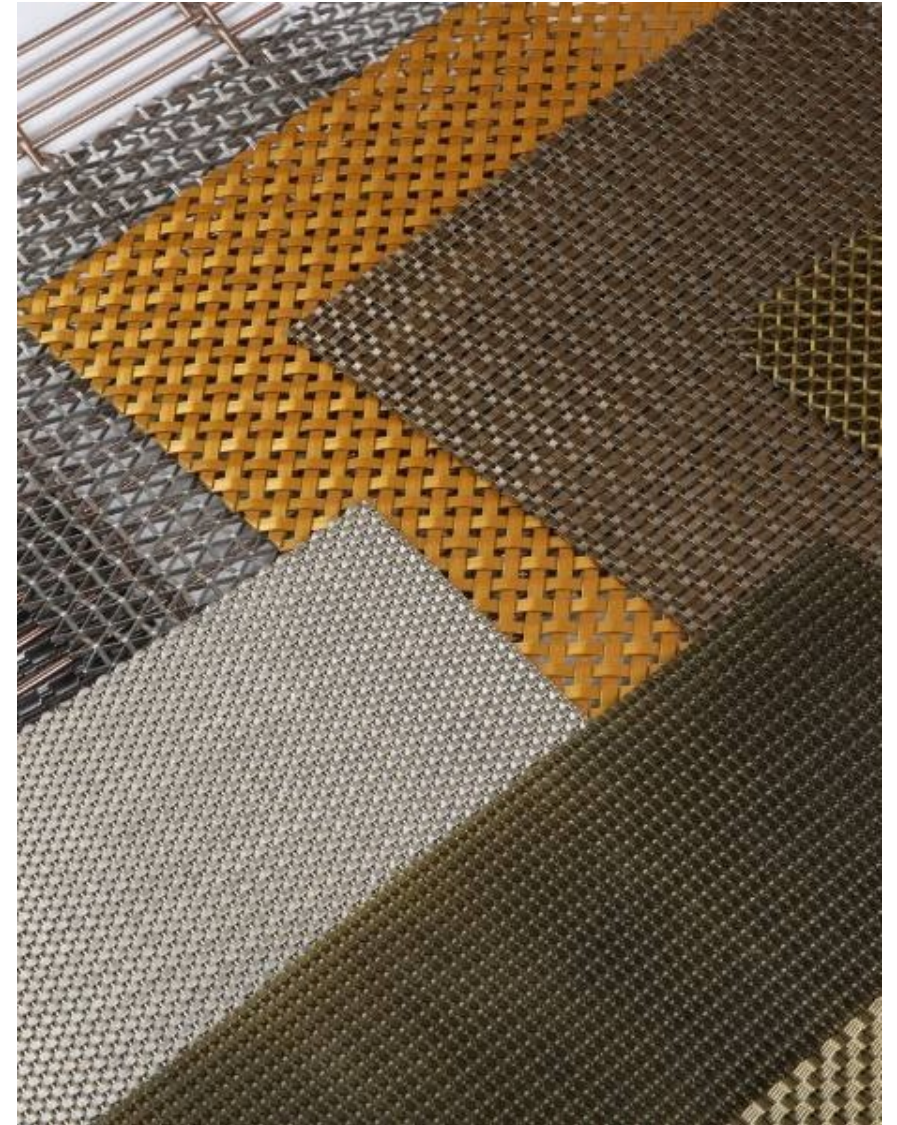
01 / PRODUCT DESCRIPTION

Texture and structure, woven in metal.

Engineered architectural mesh

KAPHS Decorative Wire Mesh is manufactured from high-quality Stainless Steel 304 and 316 as well as aluminium, providing flexibility in weight, performance and finish. Stainless steel delivers maximum strength, durability and corrosion resistance; aluminium offers a lighter solution where reduced load is required.

Each mesh is engineered for consistency in thickness, structural integrity and visual quality — suitable for both decorative and functional uses across a wide range of projects.



SECTION

03

Applications

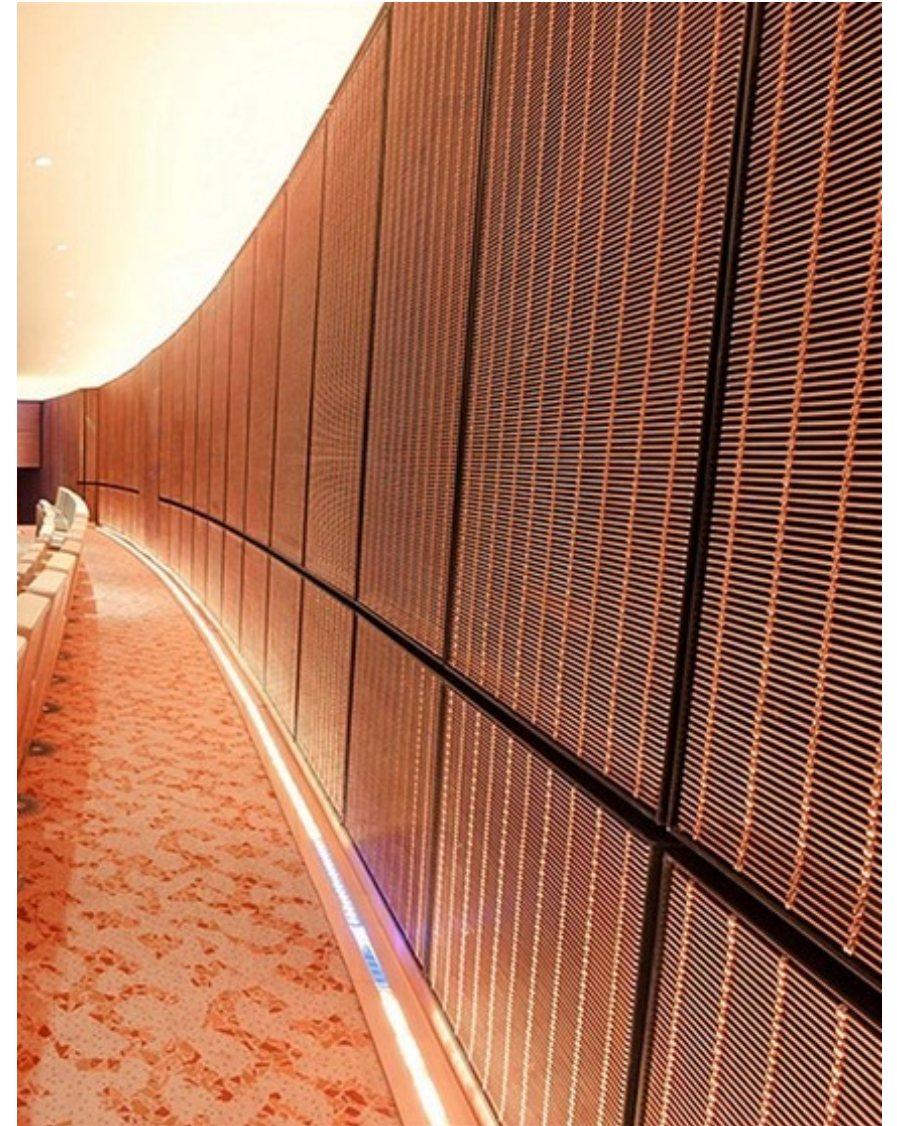
Where Decorative Wire Mesh performs — interiors, ceilings, balustrades and cladding.

03 / APPLICATIONS / 01

Interior Partitions & Feature Walls

Permeable separation with texture and depth.

In interior spaces, decorative wire mesh is commonly used for partitions, feature walls and room dividers, creating separation while maintaining openness and airflow. Its textured surface adds depth and a refined industrial aesthetic, ideal for modern design schemes — from hospitality and retail to high-end residential interiors.



Ceilings & Architectural Surfaces

Light, air and acoustic permeability overhead.

Decorative wire mesh is widely specified for suspended ceilings and architectural surface treatments. The open weave allows light, air and sound to pass through while concealing services above, producing a softly layered visual effect that responds to ambient and directed light.



Balustrades & Infill Panels

Safety and visibility with refined detail.

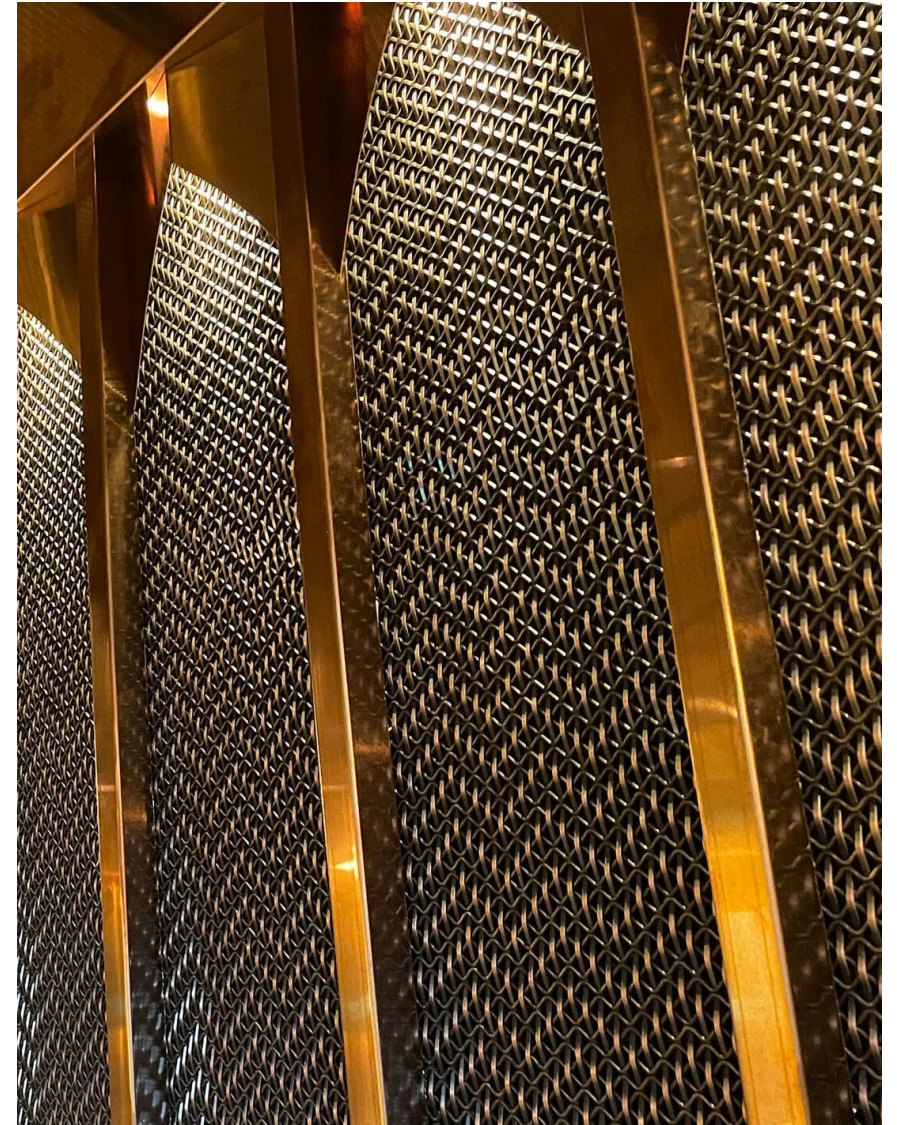
For balustrades, staircases and infill panels, decorative wire mesh provides a durable, code-compliant alternative to solid materials. The variation in open area across the range allows designers to control privacy and visibility without compromising the design intent.



Façade & Wall Cladding

Layered exteriors with light, shadow and depth.

Used as façade cladding and external wall treatments, decorative wire mesh creates a continuously changing surface as daylight moves across it. Stainless steel and aluminium weaves are engineered for long-term outdoor performance with excellent corrosion resistance.



SECTION

04

Finishes

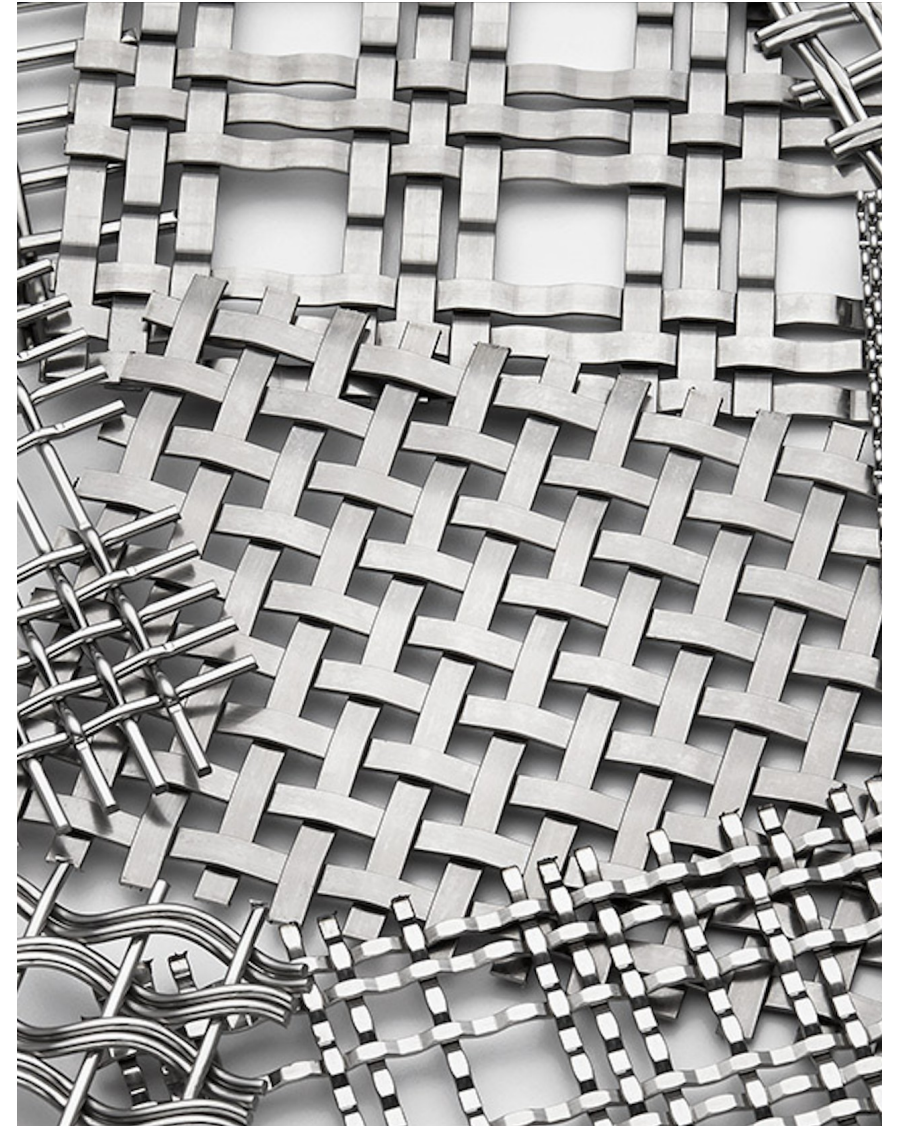
Two principal finish routes — from raw mill character to decorative PVD metallic tones.

04 / FINISHES / 01

Mill Finish

The raw character of woven metal.

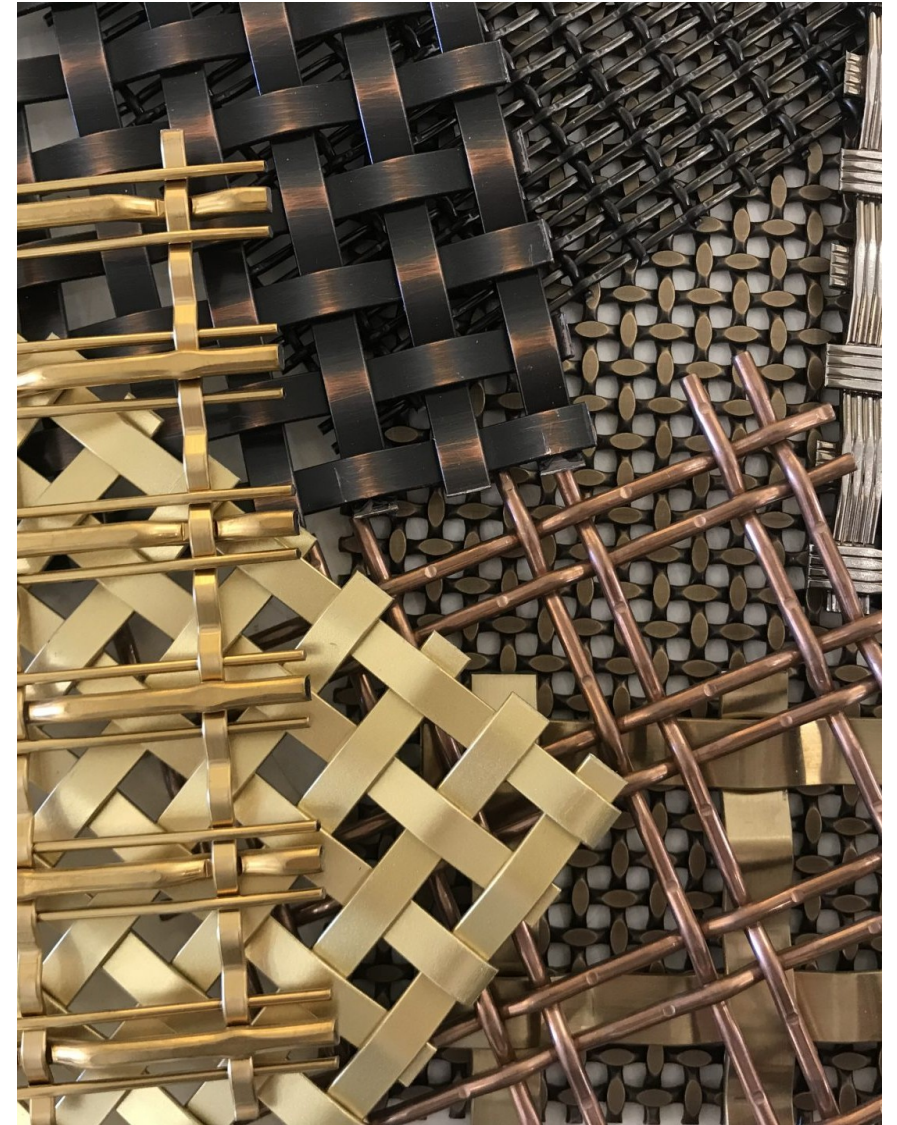
A mill finish presents the natural, untreated surface of the wire mesh after weaving. It celebrates the authentic appearance of stainless steel and aluminium and is ideal for projects seeking an honest, industrial expression — interiors, mid-rise commercial fitouts and exposed feature elements.



PVD

Decorative metallic tones, engineered to last.

PVD (Physical Vapour Deposition) deposits a thin, hard coating that delivers rich decorative tones — gold, rose gold, bronze, champagne, black, gunmetal — with excellent wear and scratch resistance. The underlying mesh character remains visible beneath a true metallic finish.



SECTION

05

Product Range

Sixteen woven patterns in stainless steel and aluminium. From open lattice weaves to dense statement structures.

05 / PRODUCT RANGE / 01 OF 16

DECORATIVE WIRE MESH

Barline

DWM-Barline-SS

OVERALL THICKNESS

OPEN AREA

WEIGHT

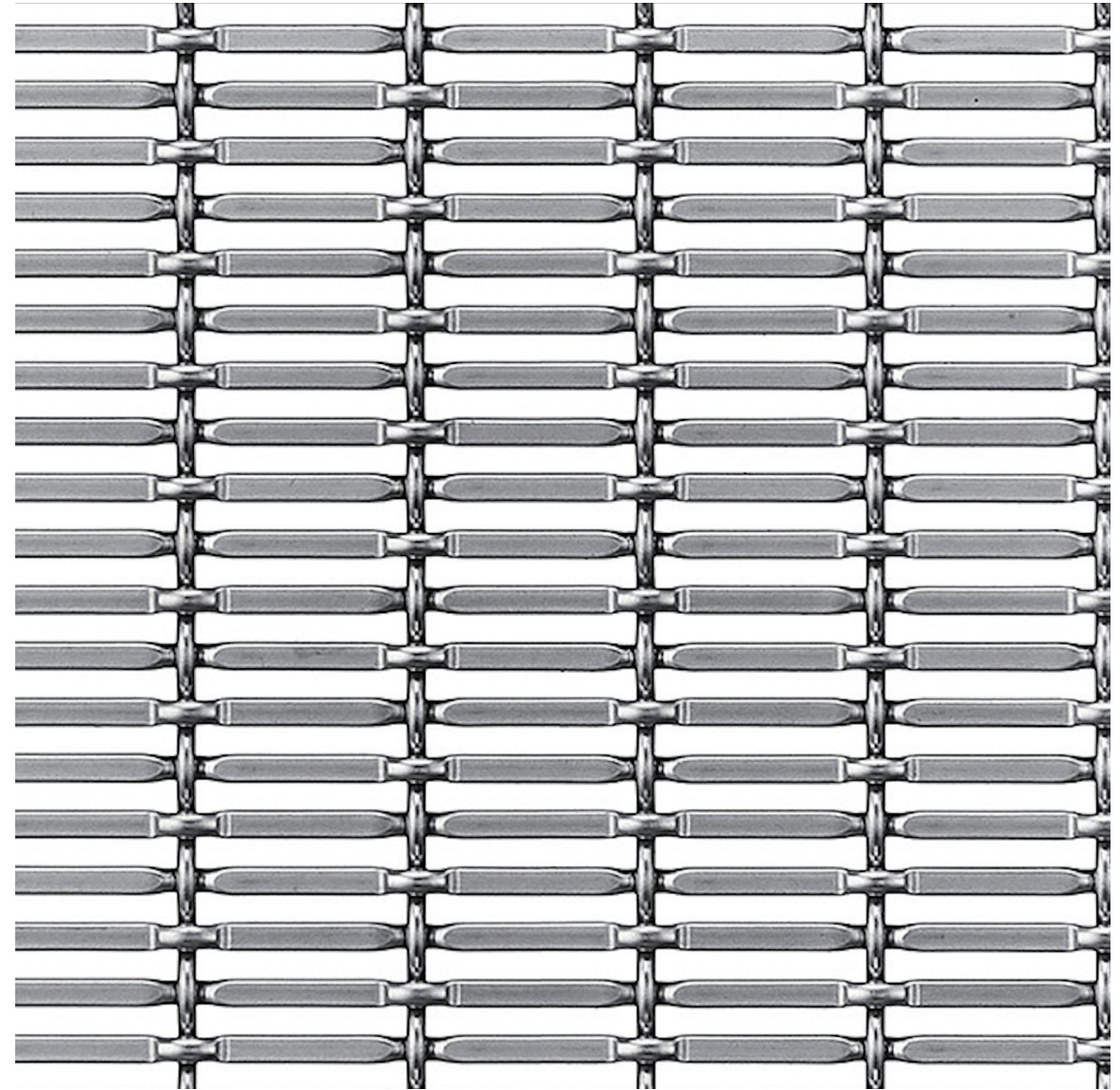
3.6 mm

47%

7 kg/m²

AVAILABLE SPECIFICATIONS

Type	Material	Thickness	Open %	Weight
DWM-Barline-SS	SS 304 / SS 316	3.6 mm	47%	7 kg/m ²



05 / PRODUCT RANGE / 02 OF 16

DECORATIVE WIRE MESH

Basketra

DWM-Basketra-SS

OVERALL THICKNESS

OPEN AREA

WEIGHT

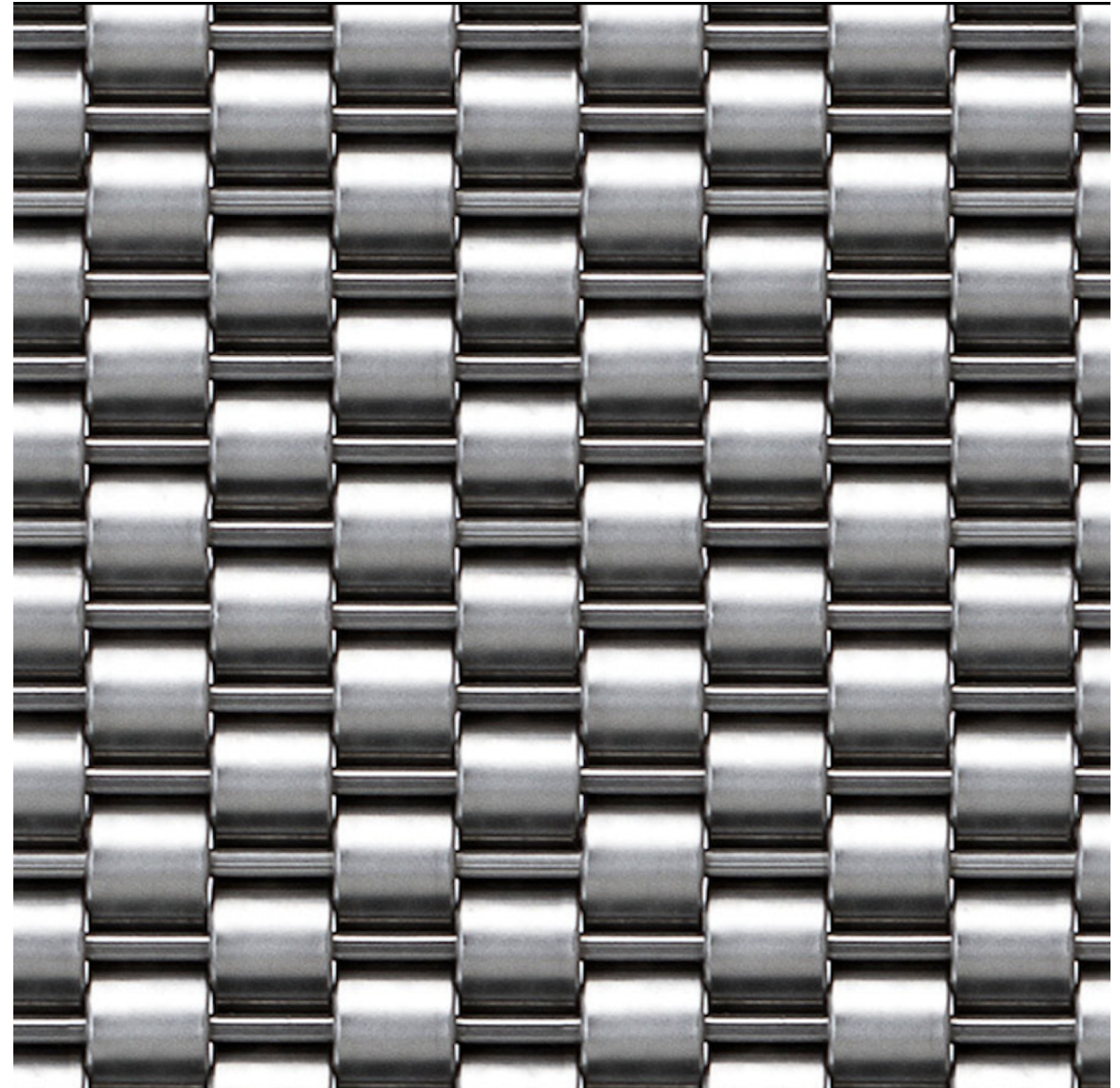
5.5 mm

0%

18.1 kg/m²

AVAILABLE SPECIFICATIONS

Type	Material	Thickness	Open %	Weight
DWM-Basketra-SS	SS 304 / SS 316	5.5 mm	0%	18.1 kg/m ²



05 / PRODUCT RANGE / 03 OF 16

DECORATIVE WIRE MESH

Beadline

DWM-Beadline-SS



OVERALL THICKNESS

OPEN AREA

WEIGHT

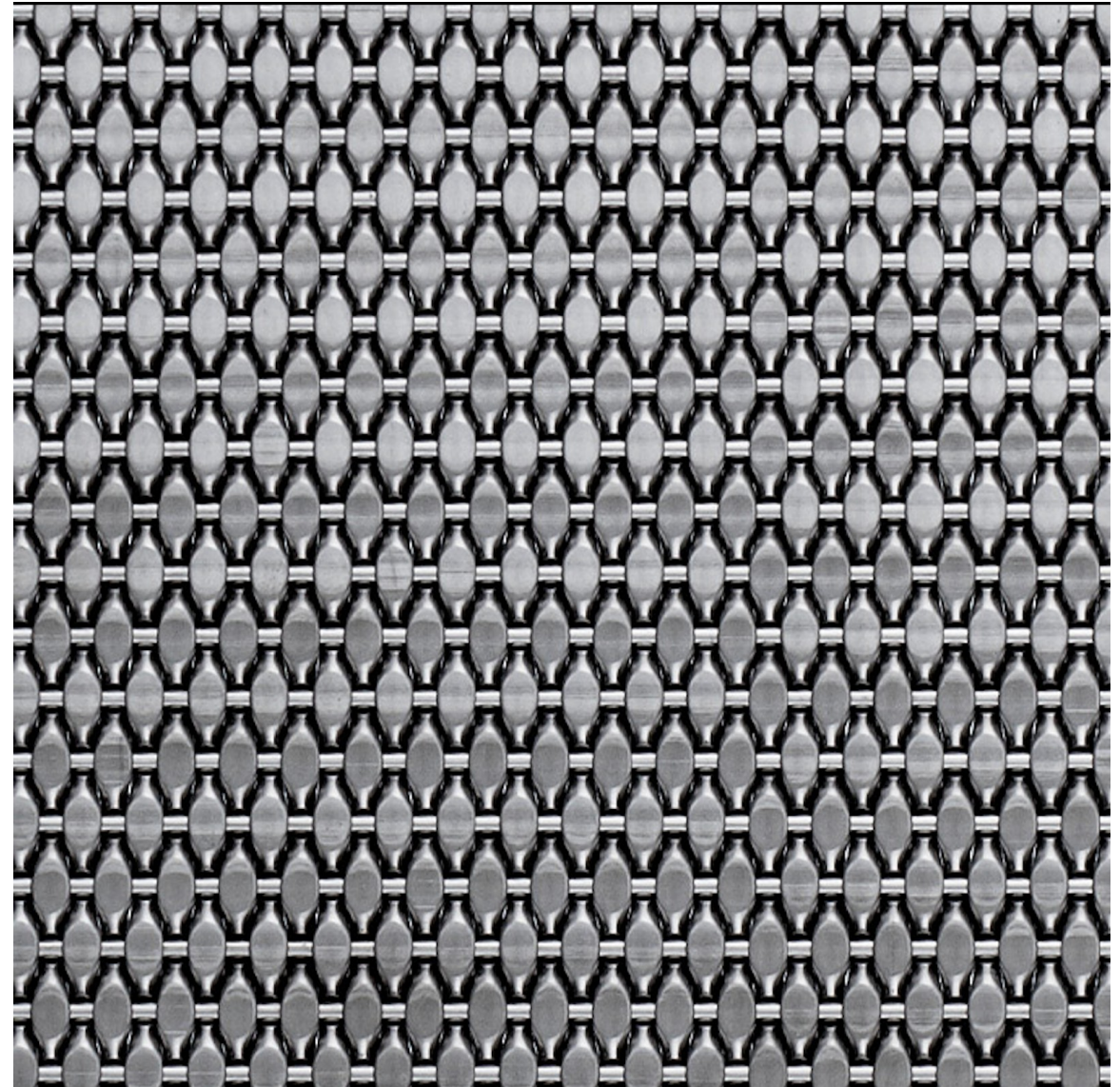
3.3 mm

0%

17.3 kg/m²

AVAILABLE SPECIFICATIONS

Type	Material	Thickness	Open %	Weight
DWM-Beadline-SS	SS 304 / SS 316	3.3 mm	0%	17.3 kg/m ²



05 / PRODUCT RANGE / 04 OF 16

DECORATIVE WIRE MESH

Capsa

DWM-Capsa-SS

OVERALL THICKNESS

OPEN AREA

WEIGHT

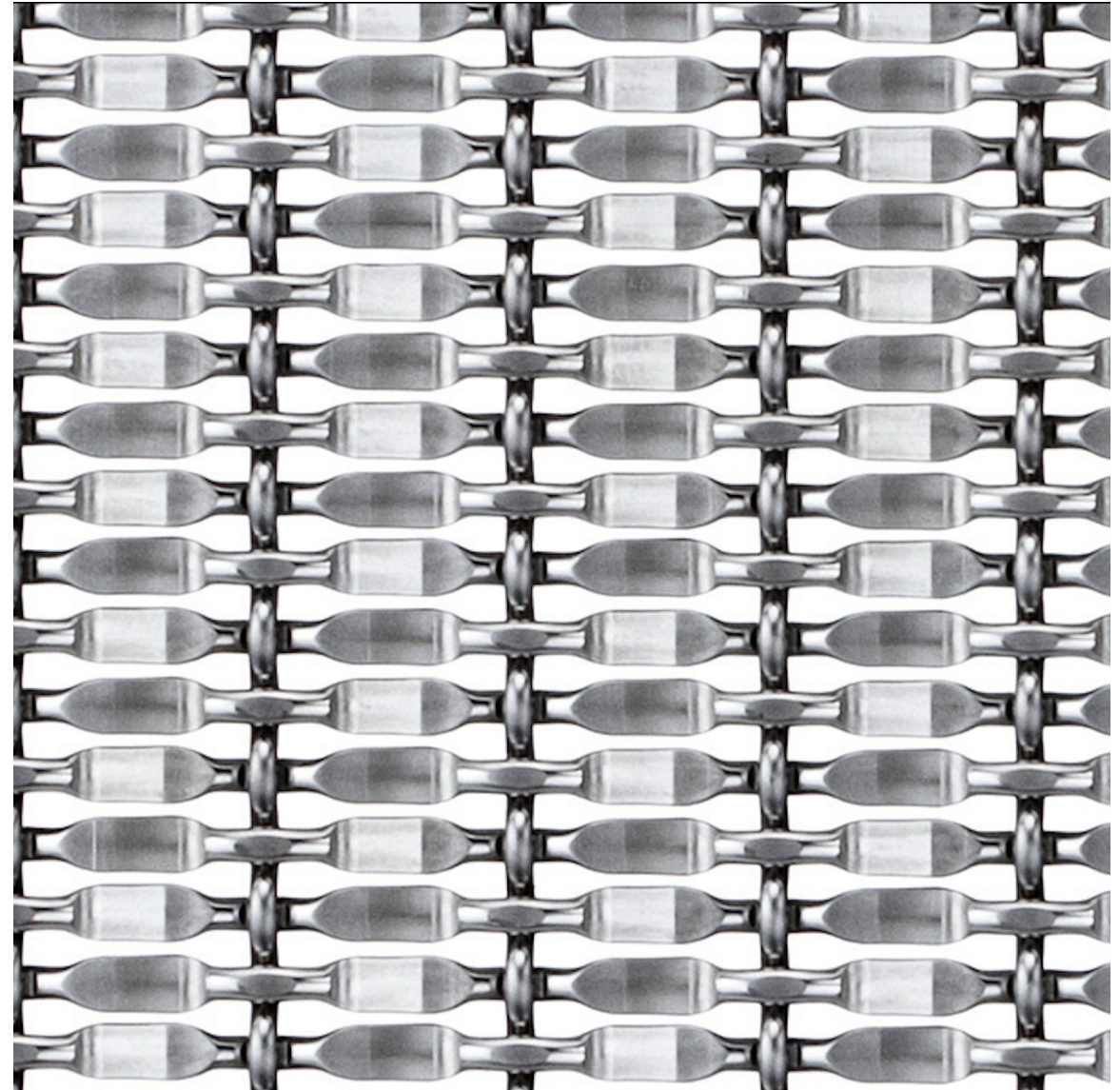
5 mm

30%

10.8 kg/m²

AVAILABLE SPECIFICATIONS

Type	Material	Thickness	Open %	Weight
DWM-Capsa-SS	SS 304 / SS 316	5 mm	30%	10.8 kg/m ²



05 / PRODUCT RANGE / 05 OF 16

DECORATIVE WIRE MESH

FrameLine

DWM-Frameline-SS



OVERALL THICKNESS

OPEN AREA

WEIGHT

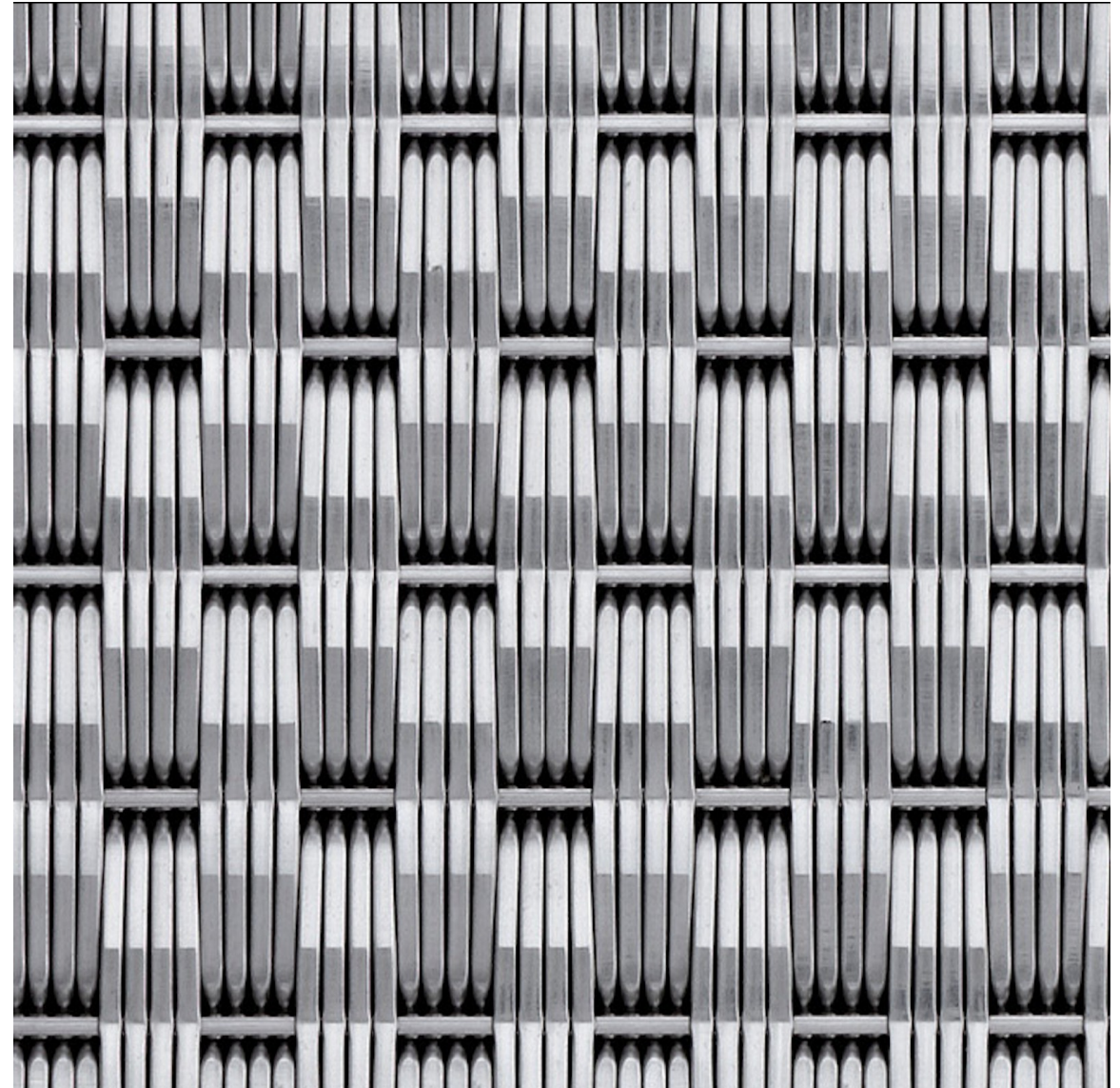
5.2 mm

0%

10.2 kg/m²

AVAILABLE SPECIFICATIONS

Type	Material	Thickness	Open %	Weight
DWM-Frameline-SS	SS 304 / SS 316	5.2 mm	0%	10.2 kg/m ²



05 / PRODUCT RANGE / 06 OF 16

DECORATIVE WIRE MESH

GridBand

DWM-GridBand-SS

OVERALL THICKNESS

OPEN AREA

WEIGHT

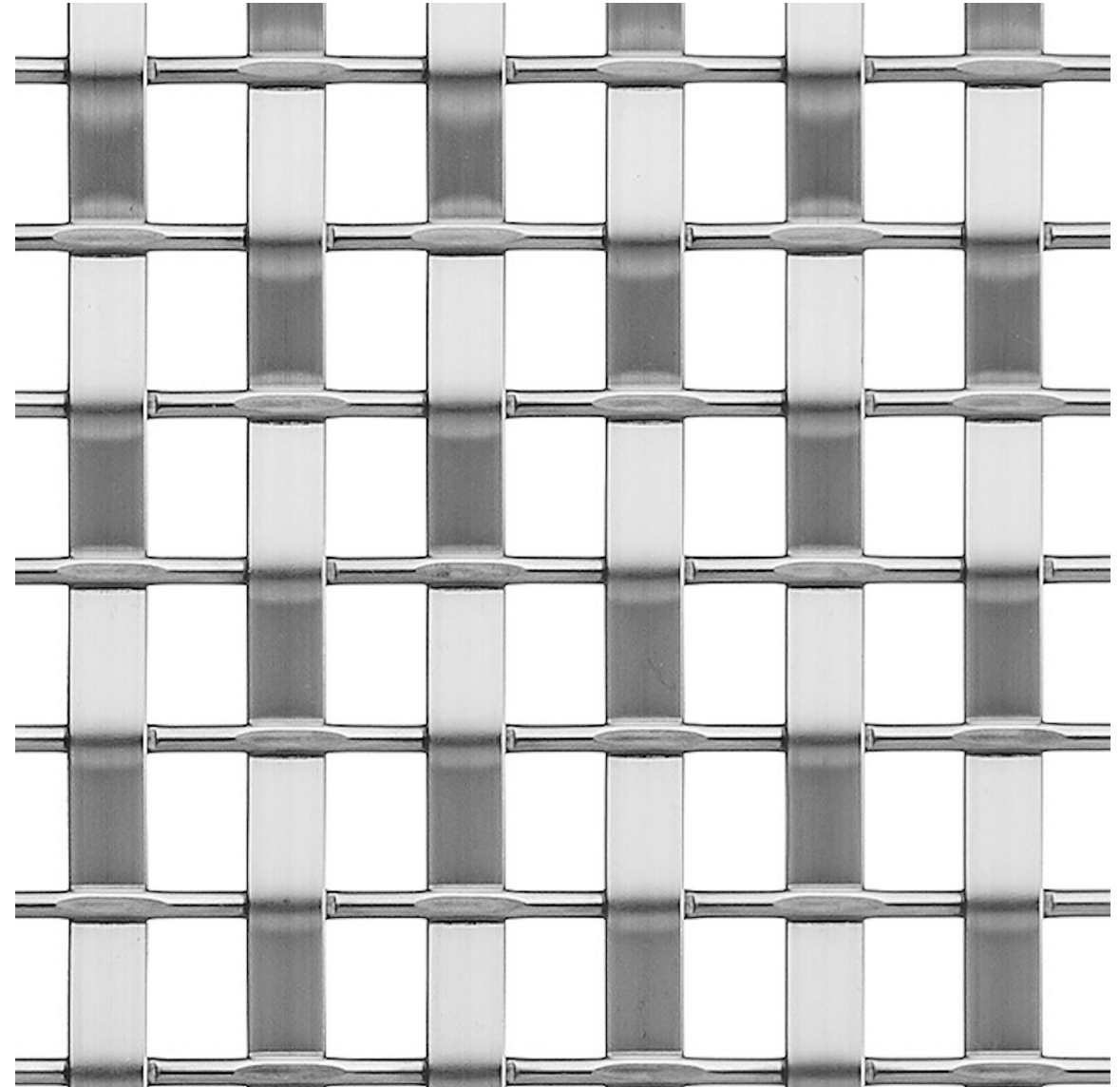
3.6 mm

44.6%

7.5 kg/m²

AVAILABLE SPECIFICATIONS

Type	Material	Thickness	Open %	Weight
DWM-GridBand-SS	SS 304 / SS 316	3.6 mm	44.6%	7.5 kg/m ²



05 / PRODUCT RANGE / 07 OF 16

DECORATIVE WIRE MESH

Interra

DWM-Interra-SS

OVERALL THICKNESS

OPEN AREA

WEIGHT

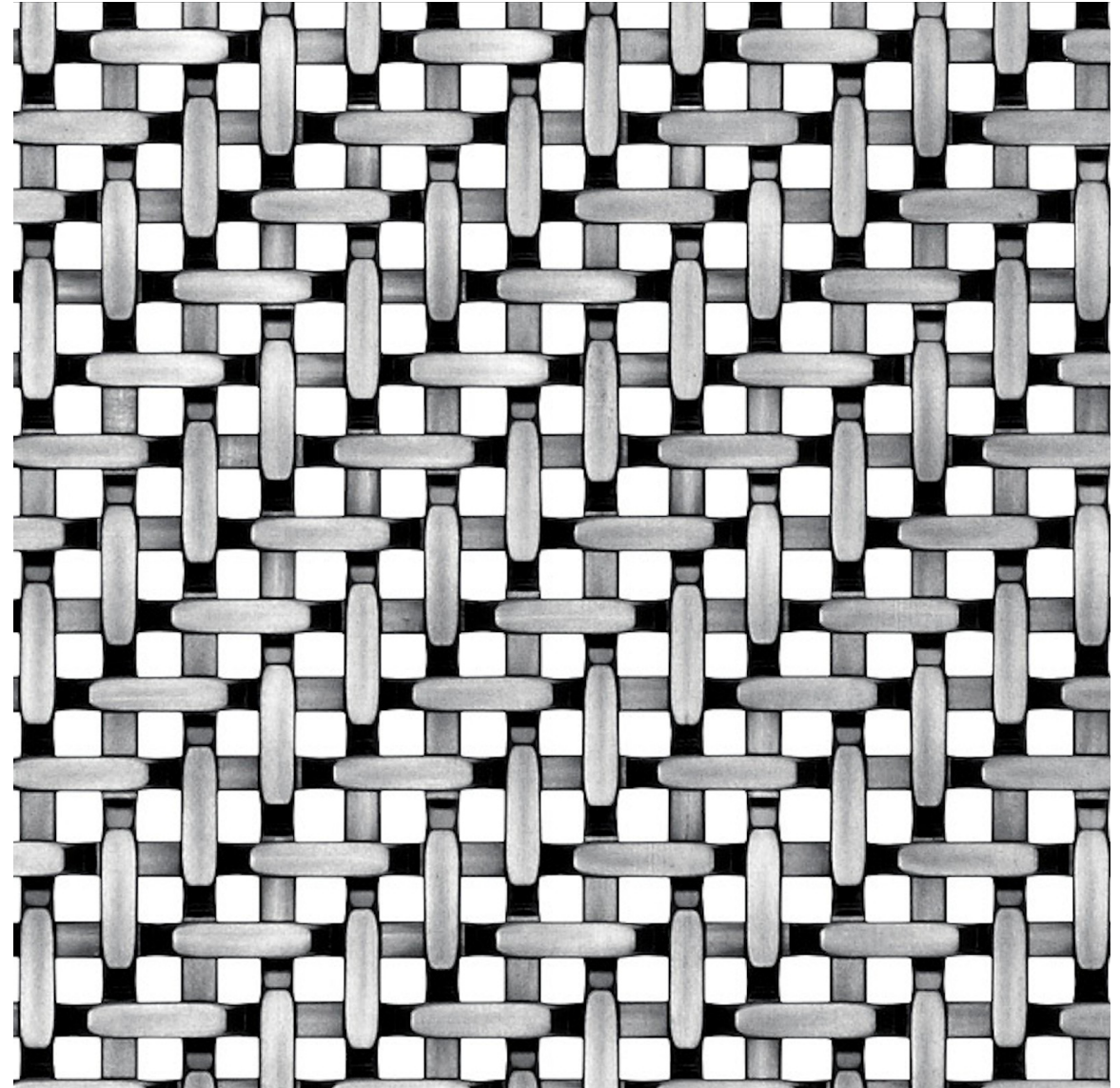
3.3 mm

28%

11.1 kg/m²

AVAILABLE SPECIFICATIONS

Type	Material	Thickness	Open %	Weight
DWM-Interra-SS	SS 304 / SS 316	3.3 mm	28%	11.1 kg/m ²



05 / PRODUCT RANGE / 08 OF 16

DECORATIVE WIRE MESH

Lattice

DWM-Lattice-SS

OVERALL THICKNESS

OPEN AREA

WEIGHT

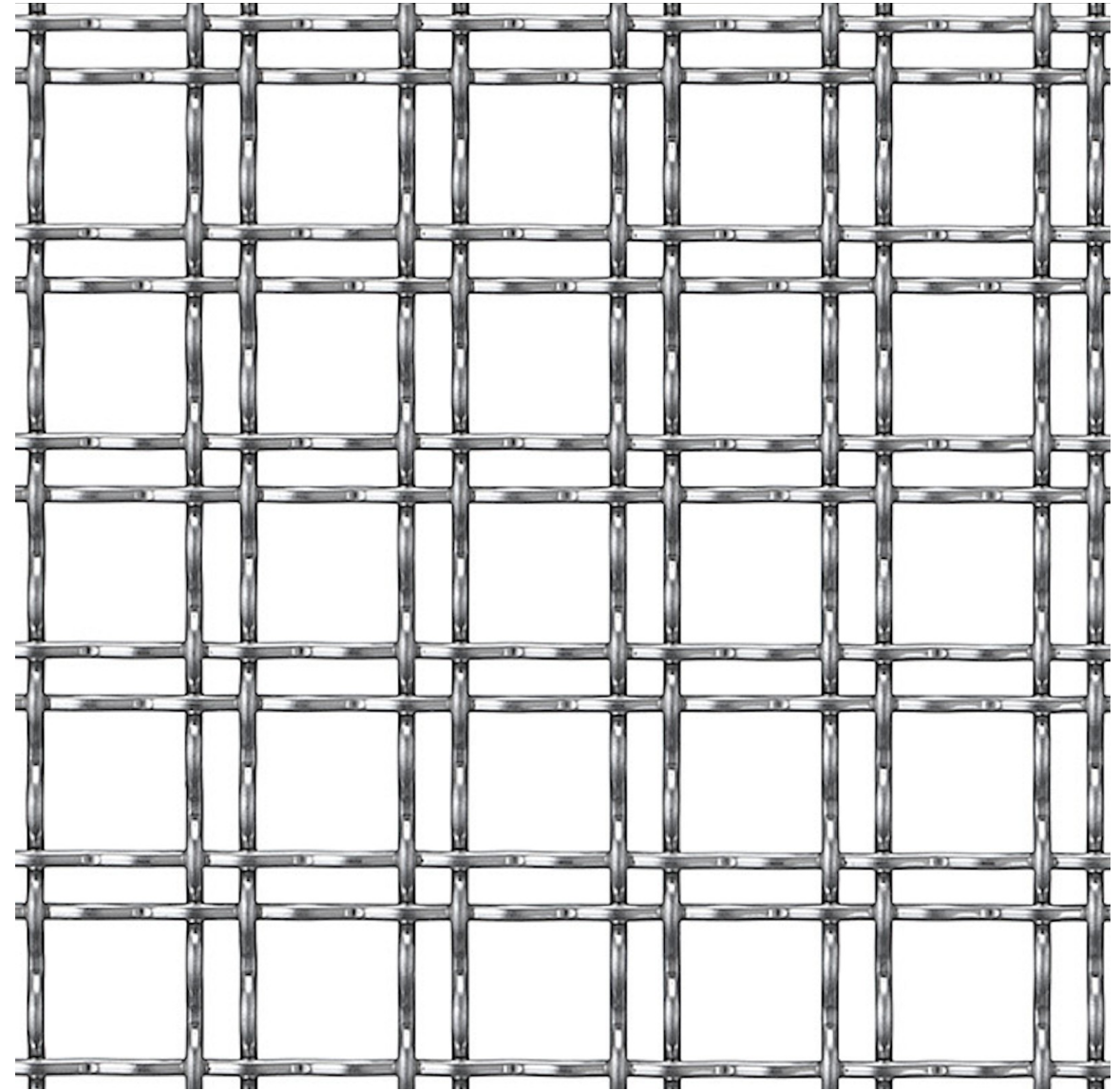
3.2 mm

65%

4.1 kg/m²

AVAILABLE SPECIFICATIONS

Type	Material	Thickness	Open %	Weight
DWM-Lattice-SS	SS 304 / SS 316	3.2 mm	65%	4.1 kg/m ²



05 / PRODUCT RANGE / 09 OF 16

DECORATIVE WIRE MESH

Nexa

DWM-Nexa-SS

OVERALL THICKNESS

OPEN AREA

WEIGHT

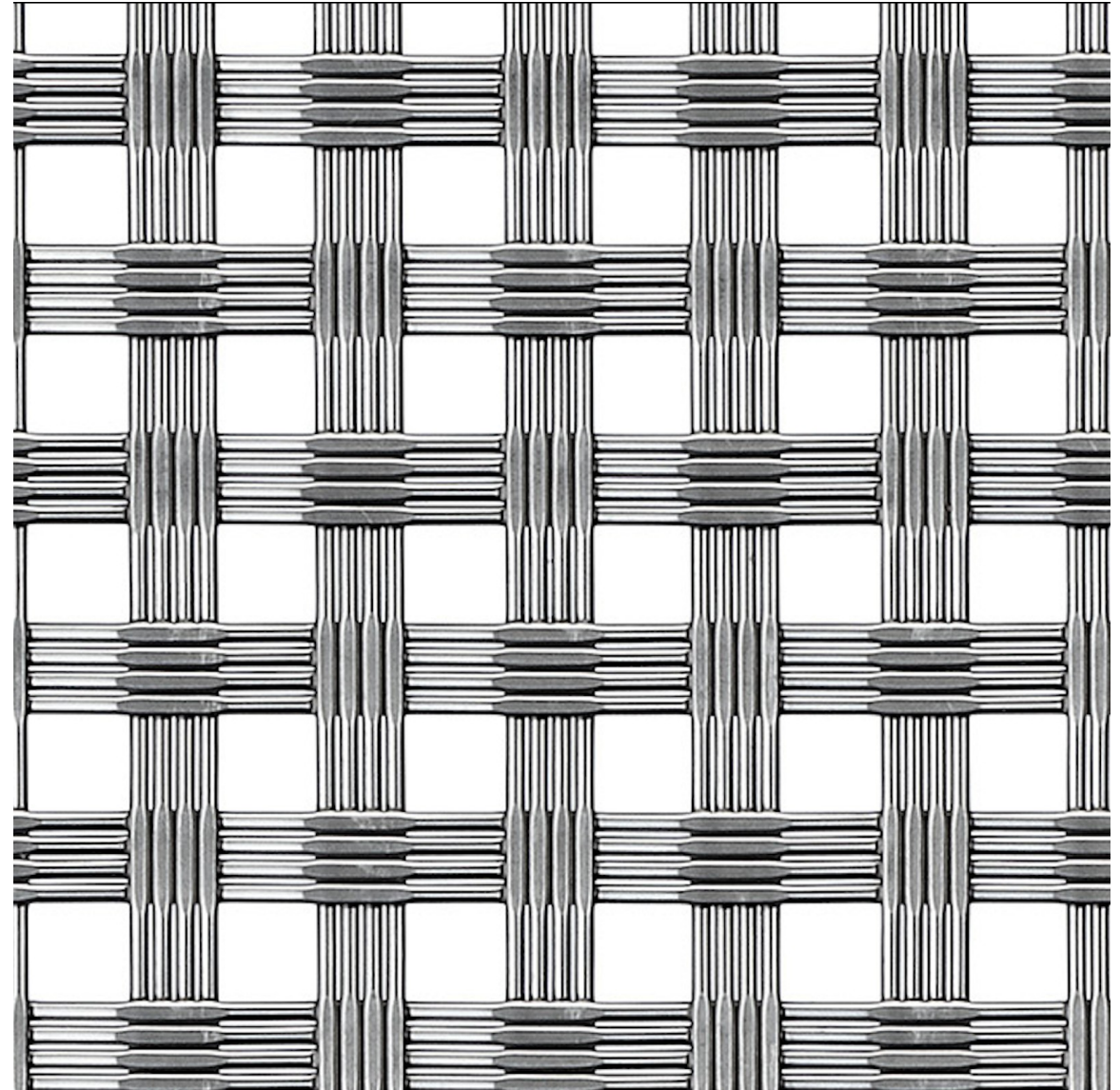
2 mm

44%

5.7 kg/m²

AVAILABLE SPECIFICATIONS

Type	Material	Thickness	Open %	Weight
DWM-Nexa-SS	SS 304 / SS 316	2 mm	44%	5.7 kg/m ²



05 / PRODUCT RANGE / 10 OF 16

DECORATIVE WIRE MESH

Nodus

DWM-Nodus-SS

OVERALL THICKNESS

OPEN AREA

WEIGHT

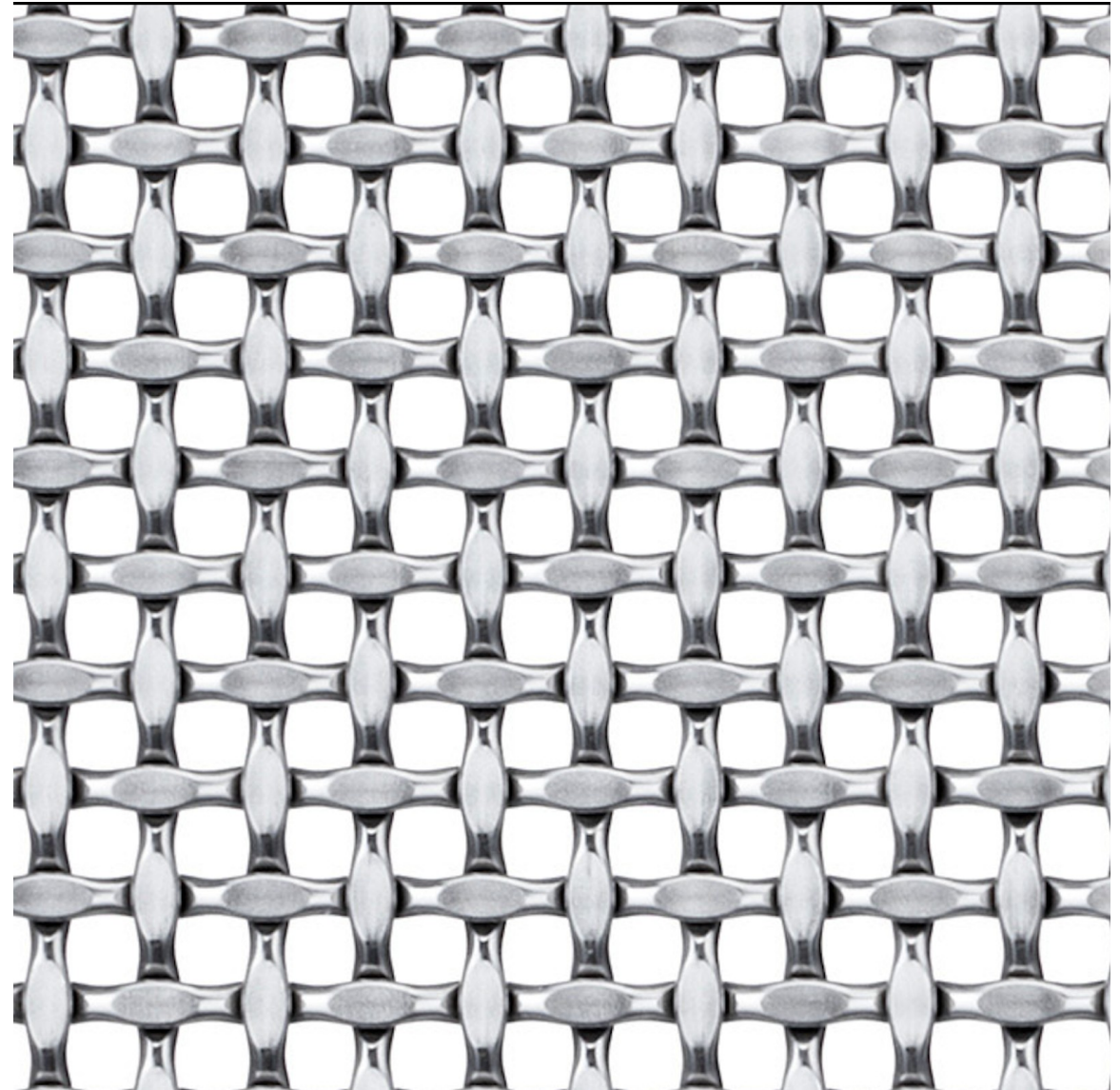
2.5 mm

31%

10 kg/m²

AVAILABLE SPECIFICATIONS

Type	Material	Thickness	Open %	Weight
DWM-Nodus-SS	SS 304 / SS 316	2.5 mm	31%	10 kg/m ²



05 / PRODUCT RANGE / 11 OF 16

DECORATIVE WIRE MESH

Plana

DWM-Plana-SS



OVERALL THICKNESS

OPEN AREA

WEIGHT

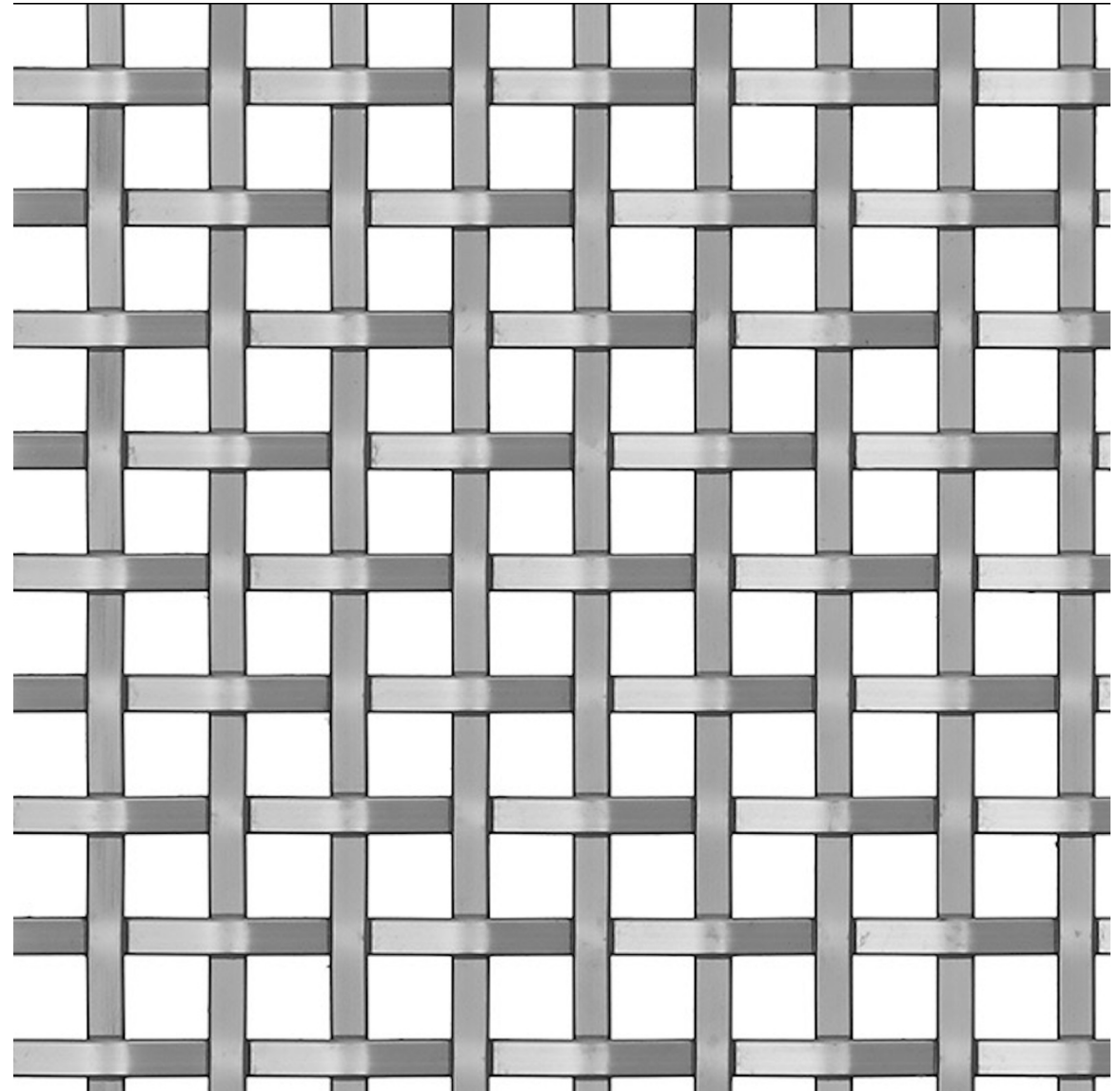
2.5 mm

45%

7 kg/m²

AVAILABLE SPECIFICATIONS

Type	Material	Thickness	Open %	Weight
DWM-Plana-SS	SS 304 / SS 316	2.5 mm	45%	7 kg/m ²



05 / PRODUCT RANGE / 12 OF 16

DECORATIVE WIRE MESH

Quadra

DWM-Quadra-SS



OVERALL THICKNESS

OPEN AREA

WEIGHT

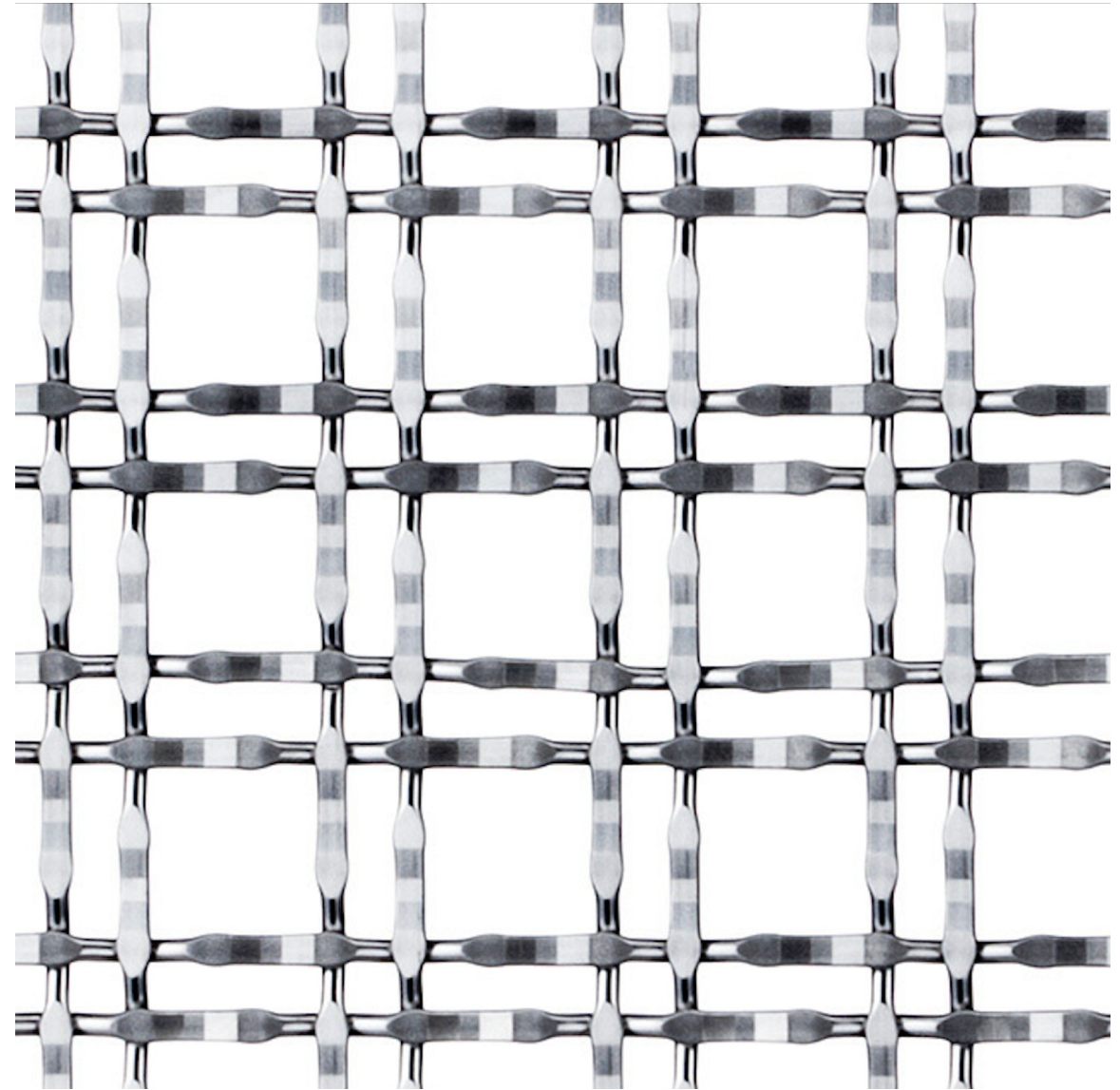
4 mm

61%

5 kg/m²

AVAILABLE SPECIFICATIONS

Type	Material	Thickness	Open %	Weight
DWM-Quadra-SS	SS 304 / SS 316	4 mm	61%	5 kg/m ²



05 / PRODUCT RANGE / 13 OF 16

DECORATIVE WIRE MESH

Sora

DWM-Sora-SS



OVERALL THICKNESS

OPEN AREA

WEIGHT

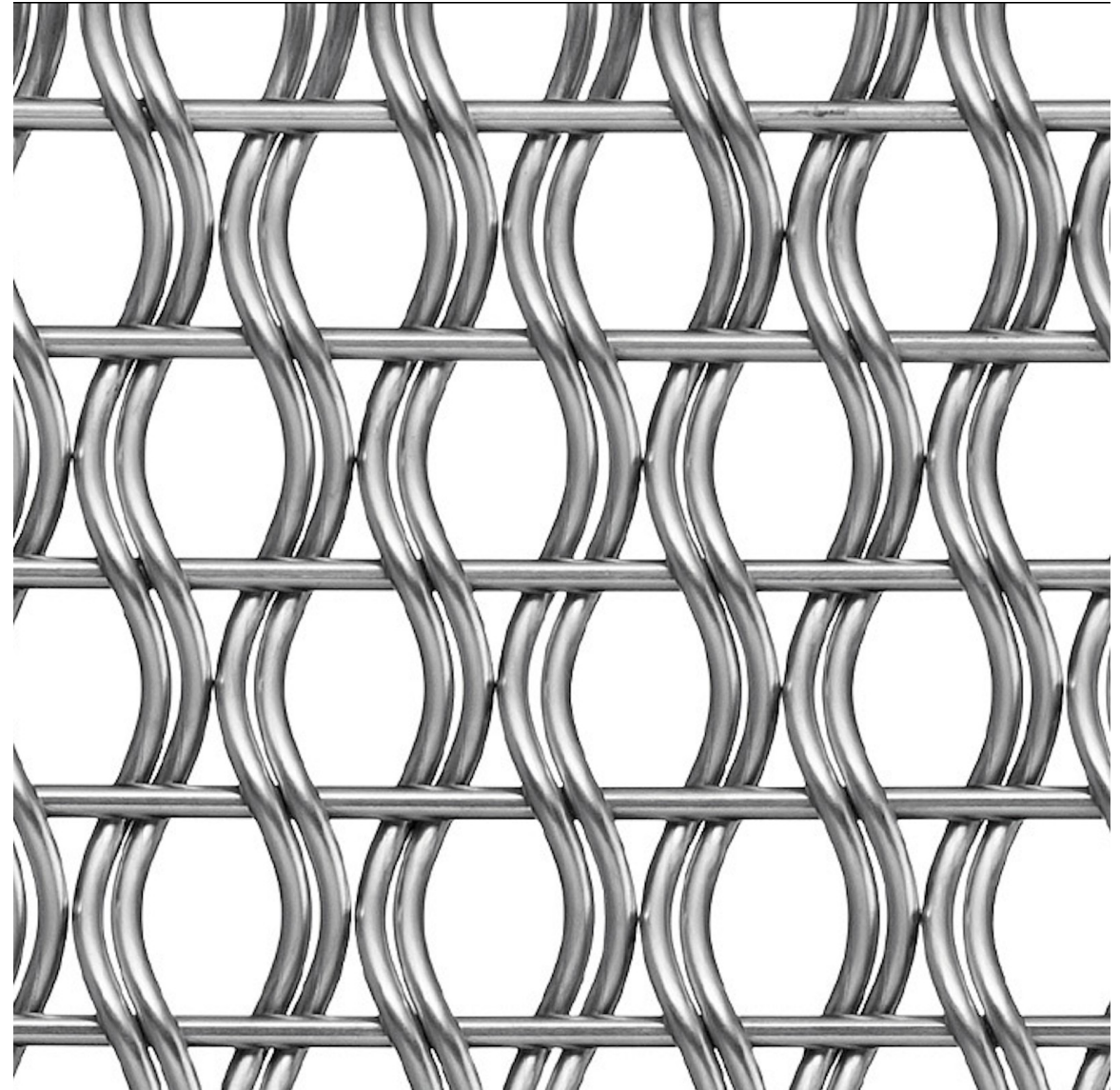
4 mm

41%

8.4 kg/m²

AVAILABLE SPECIFICATIONS

Type	Material	Thickness	Open %	Weight
DWM-Sora-SS	SS 304 / SS 316	4 mm	41%	8.4 kg/m ²



05 / PRODUCT RANGE / 14 OF 16

DECORATIVE WIRE MESH

Spindle

DWM-Spindle-SS



OVERALL THICKNESS

OPEN AREA

WEIGHT

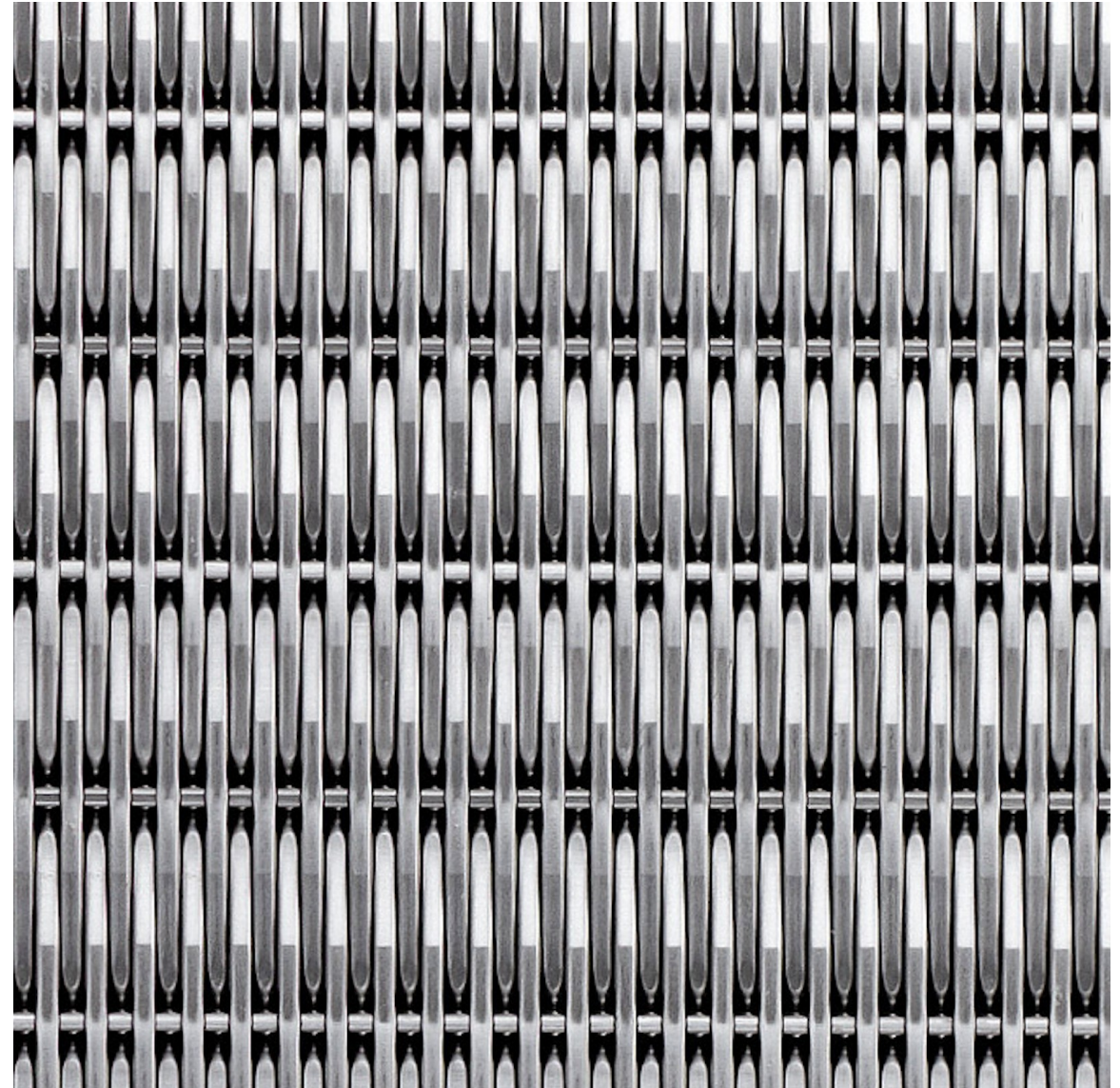
5.2 mm

0%

11.5 kg/m²

AVAILABLE SPECIFICATIONS

Type	Material	Thickness	Open %	Weight
DWM-Spindle-SS	SS 304 / SS 316	5.2 mm	0%	11.5 kg/m ²



05 / PRODUCT RANGE / 15 OF 16

DECORATIVE WIRE MESH

WaveBand

DWM-WaveBand-SS

OVERALL THICKNESS

OPEN AREA

WEIGHT

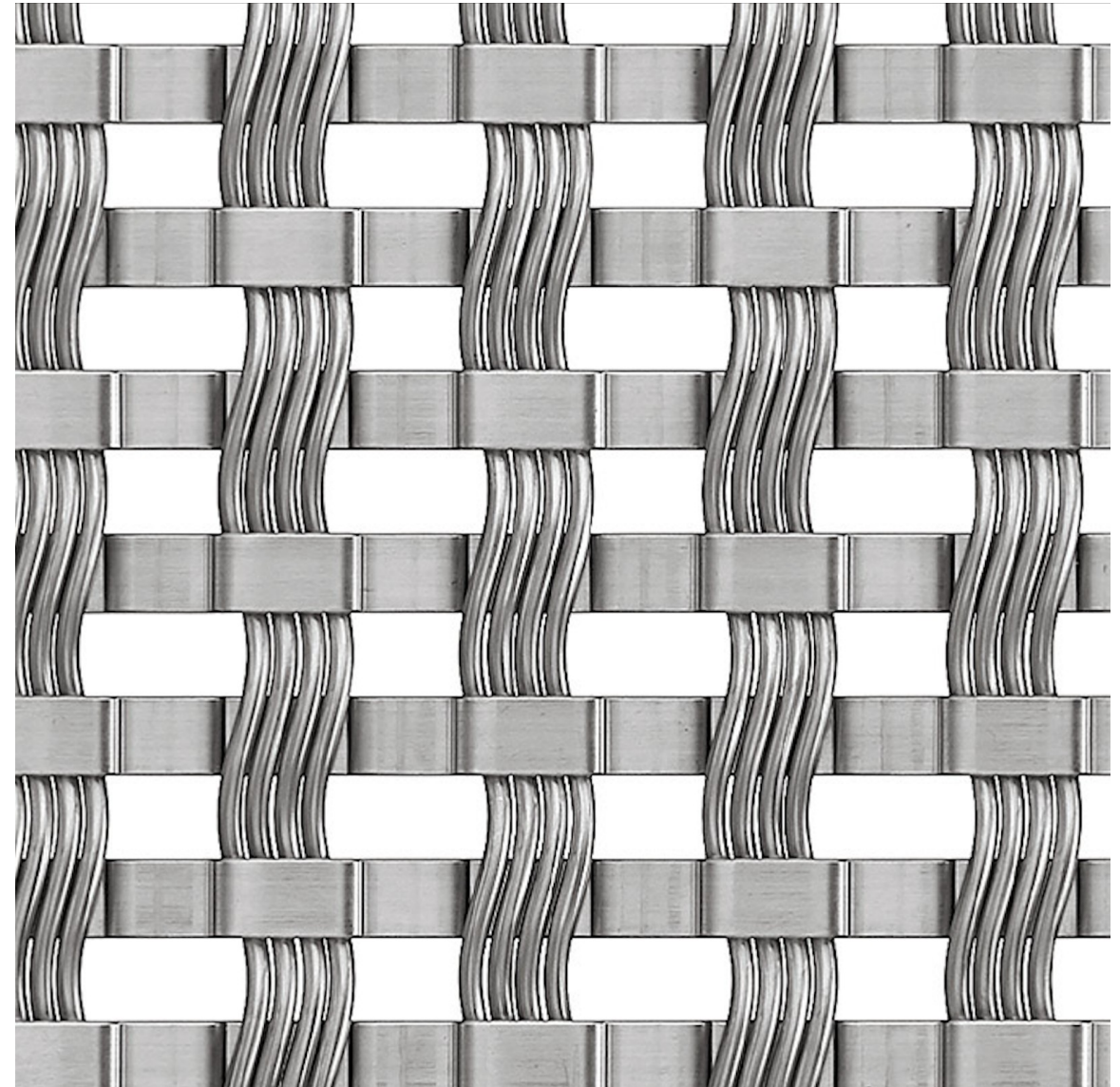
3.5 mm

29%

10.8 kg/m²

AVAILABLE SPECIFICATIONS

Type	Material	Thickness	Open %	Weight
DWM-WaveBand-SS	SS 304 / SS 316	3.5 mm	29%	10.8 kg/m ²



05 / PRODUCT RANGE / 16 OF 16

DECORATIVE WIRE MESH

WaveGrid

DWM-WaveGrid-SS



OVERALL THICKNESS

OPEN AREA

WEIGHT

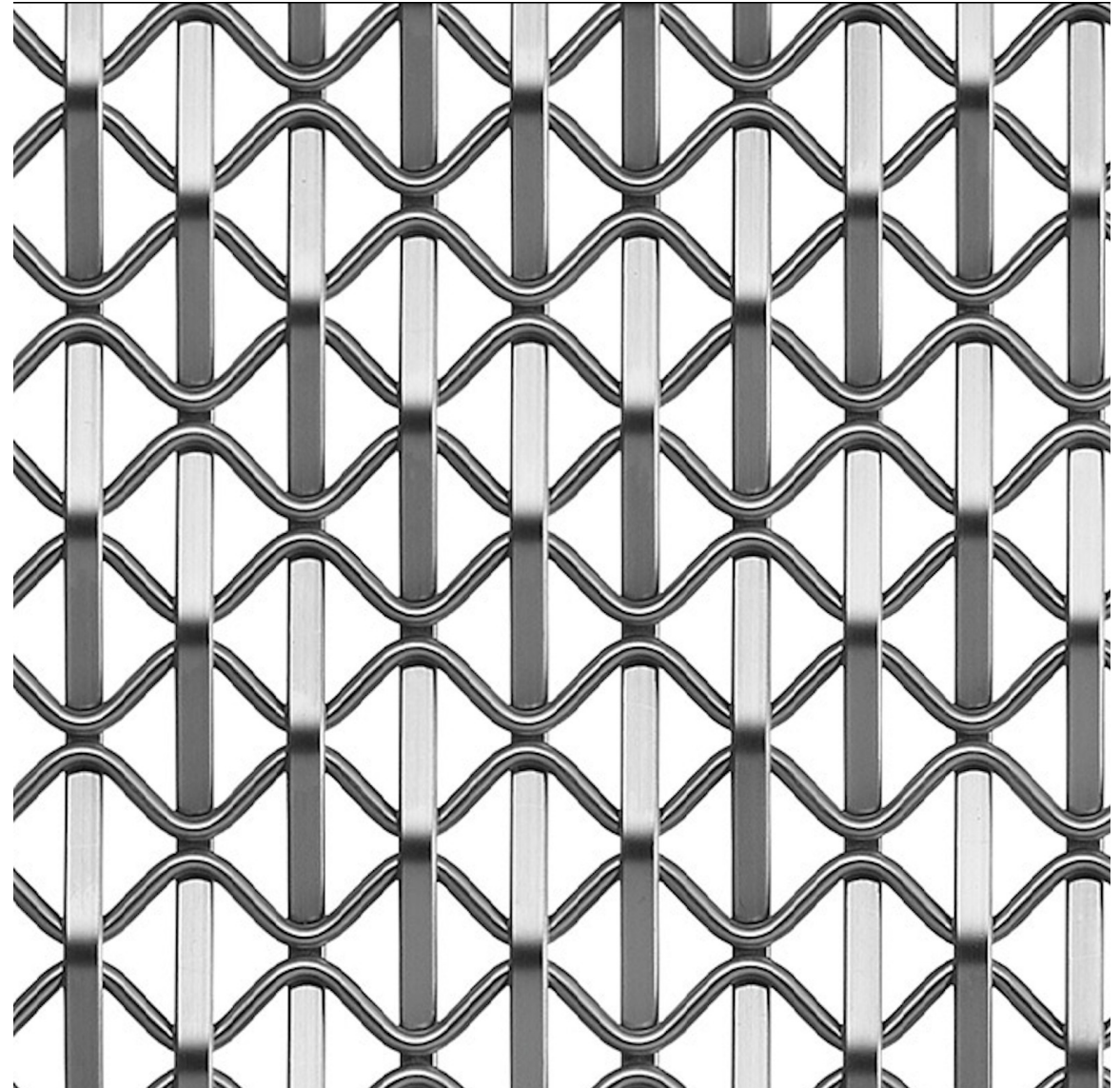
5.2 mm

48%

7 kg/m²

AVAILABLE SPECIFICATIONS

Type	Material	Thickness	Open %	Weight
DWM-WaveGrid-SS	SS 304 / SS 316	5.2 mm	48%	7 kg/m ²

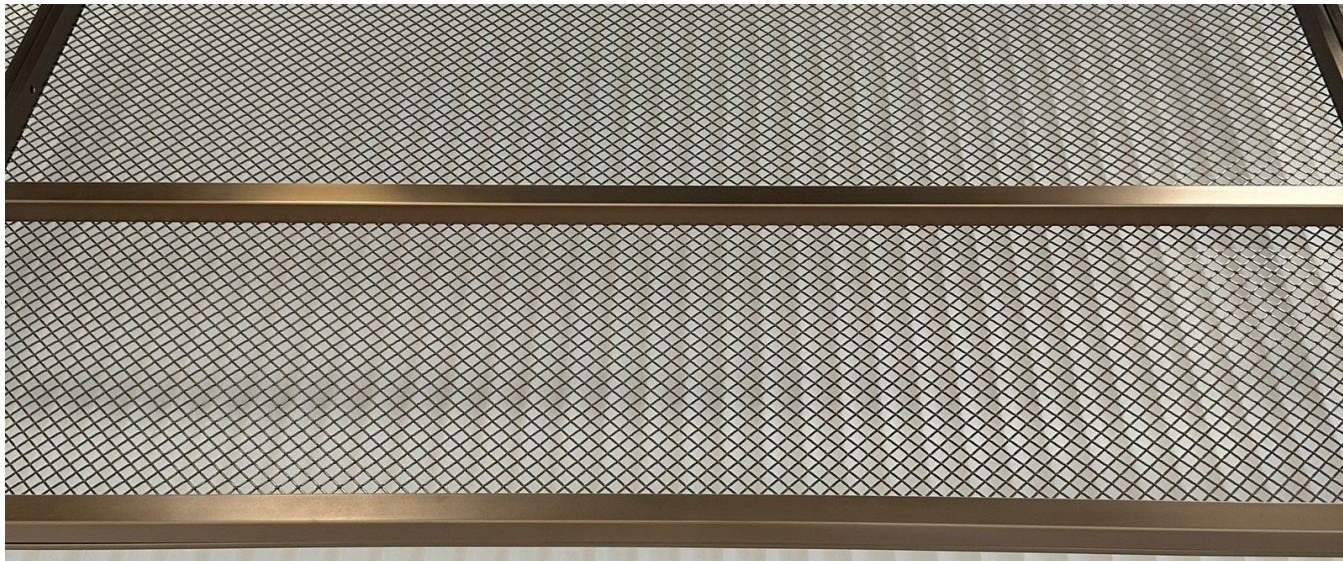


SECTION

06

Project References

KAPHS Decorative Wire Mesh in built work — selected projects in the UAE.



06 / PROJECT REFERENCES / 01 OF 02

DAFZA Food Court

Dubai – United Arab Emirates

APPLICATION

Backdrops & feature panels

MESH PATTERN

Bronze flat-wire architectural mesh

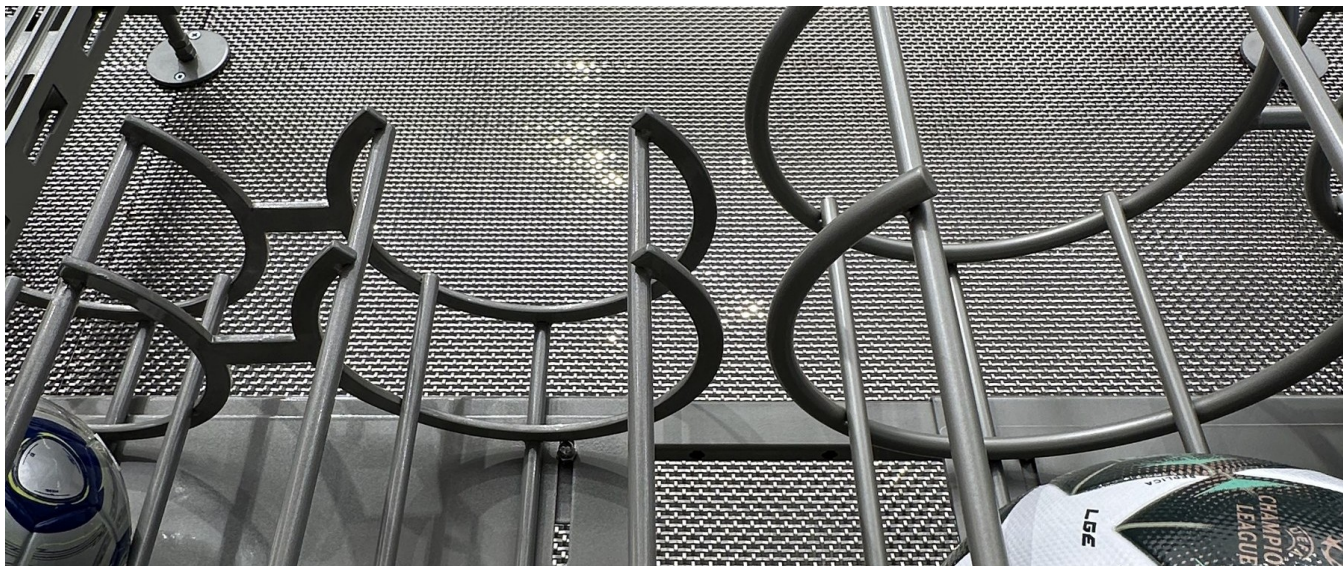
The DAFZA Food Court in Dubai features striking backdrops in bronze-coloured flat wire mesh, adding sophistication and elegance to the dining area. The flat-wire weave increases surface area, reduces transparency and enhances the warmth and brilliance of the bronze tone — a robust, artistic element that elevates the space.

CLIENT

DAFZA

ARCHITECT

Archiplexus



06 / PROJECT REFERENCES / 02 OF 02

Adidas Young Athletes Store, Dubai Mall

Dubai – United Arab Emirates

APPLICATION

Wall cladding

MESH PATTERN

LARGO-PLENUS flat-wire mesh

The Adidas Young Athletes store in Dubai Mall showcases the LARGO-PLENUS wire mesh as wall cladding. Unlike traditional round-wire meshes, LARGO-PLENUS is woven from flat wires, lending it a unique and robust appearance. The flat-wire construction increases surface area, reduces transparency and amplifies the visual impact of the store's cladding — vibrant, durable and eye-catching.

CLIENT

Adidas

ARCHITECT

Adidas

Engineered for specification.

MATERIALS

Stainless Steel 304 — interior and general architectural use.
Stainless Steel 316 — coastal and demanding environments.
Aluminium — lightweight applications where load is critical.

DIMENSIONS

Standard panel widths up to 1,500 mm.
Standard lengths up to 6,000 mm.
Custom sizes available to project specification.

CUSTOMISATION

Bespoke patterns, weave densities and aperture sizes.
Project-specific finishes and colour matching.
Engineered framing and fixing systems on request.

Specify with KAPHS.

Project enquiries, samples and technical data.

KAPHS Middle East

WEB

kaphsgroup.com

EMAIL

sales@kaphsgroup.com

BASED

United Arab Emirates
