

The logo for KAPHS, featuring a stylized 'K' symbol followed by the letters 'APHS' in a serif font.

MIDDLE EAST

PRODUCT CATALOGUE

PREMIUM ARCHITECTURAL CAST GLASS

Cast Glass.

Sculptural glass defined by depth, texture, and the play of light.

kaphsgroup.com

Contents

A complete guide to the KAPHS Cast Glass system — concept, process, applications, and the full 22-pattern product library across three ranges.

<i>01</i>	Introduction	03	<i>06</i>	Product Range	16
<i>02</i>	Product Description	04	<i>07</i>	CastForm	17
<i>03</i>	How It's Made	05	<i>08</i>	CrystalForm	20
<i>04</i>	Applications	06	<i>09</i>	CoreForm	23
<i>05</i>	The Three Ranges	12	<i>10</i>	Contact	25

Sculptural glass, cast in light.

KAPHS Cast Glass is a premium architectural material defined by depth, texture, and light interaction. Produced through a one-time casting process, each panel offers exceptional strength, consistency, and the ability to achieve a wide range of surface and internal effects at scale.

The collection is structured across three distinct ranges — CastForm, CrystalForm and CoreForm — engineered for partitions, façades, feature walls and backlit installations where both performance and presence are required.

3

RANGES

22

PATTERNS

∞

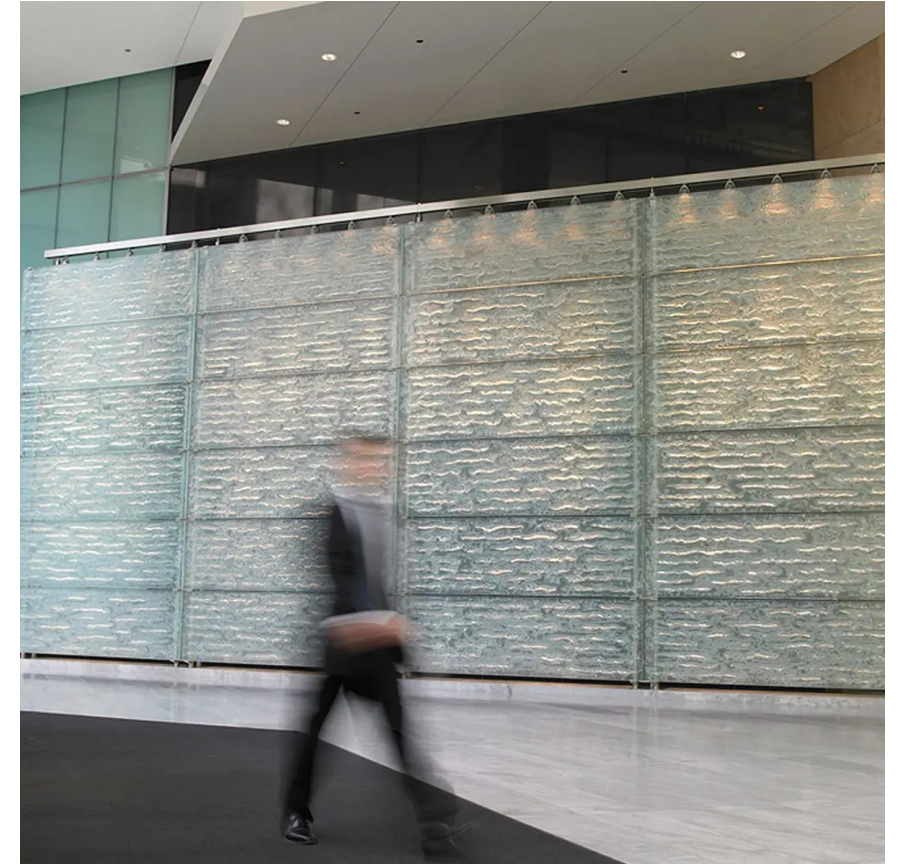
FORMATS & APPLICATIONS

A premium cast glass system.

Architectural cast glass

KAPHS Cast Glass is produced through a one-time casting process that yields panels of exceptional strength, optical depth, and surface presence. Each piece carries the marks of its making — textures, internal structures, and material density that diffuse and animate light across the surface.

The system is offered in three families: CastForm for surface expression, CrystalForm for sculptural internal effects, and CoreForm for monolithic colour and presence. Available in large formats and significant thicknesses, the range is engineered for both interior and exterior architectural use.



How Cast Glass is made.

01

Mould preparation

A precision-machined refractory mould is prepared to define surface texture, geometric pattern or sculptural internal form.

02

Glass charging

High-purity glass is loaded into the mould in carefully measured volumes to achieve the required panel thickness and density.

03

One-time casting

The charged mould is brought to working temperature in a controlled kiln cycle, allowing the glass to flow, settle and capture every detail.

04

Annealing & finishing

Each panel is annealed over an extended cycle, then inspected, edged and finished to architectural tolerances before dispatch.

Applications.

Where Cast Glass performs — partitions, feature walls, façades, backlit installations, furniture and sculptural panels.

Partitions & Screens

Architectural use

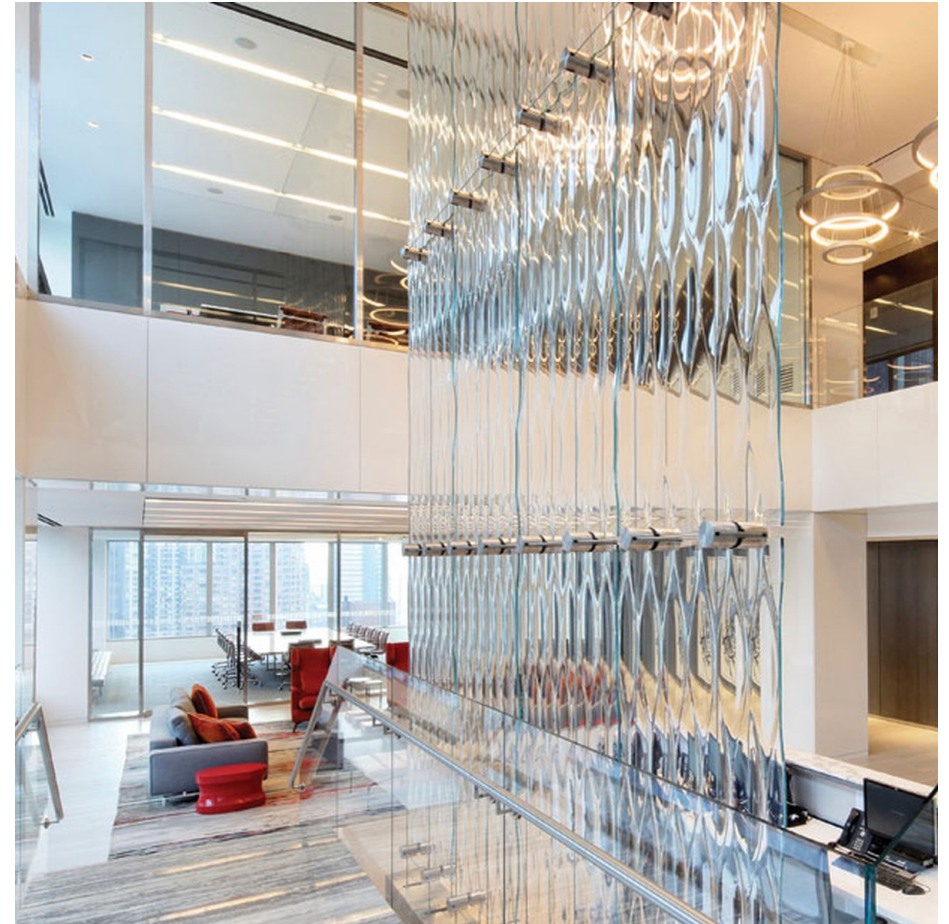
Used in partitions and screens, cast glass creates privacy with rich visual texture while maintaining light transmission. The depth of the cast surface introduces a tactile, sculptural quality — ideal for offices, hospitality and high-end interiors where transparent separation must still carry presence.



Feature Walls

Architectural use

Cast glass feature walls turn a vertical surface into a statement — for hospitality, retail and luxury residential. CastForm textures, CrystalForm internal effects and CoreForm colour density create panels that read as both architecture and art.



Façades & Curtain Walls

Architectural use

Engineered for exterior architectural use, large-format cast glass panels deliver durability, dimensional stability and a strong material identity. Suitable for entrance façades, curtain wall infills and exterior cladding where character and performance must align.



Backlit Installations

Architectural use

Backlighting amplifies the inherent depth of the CrystalForm and CoreForm ranges, transforming each panel into a luminous architectural element. Ideal for bar fronts, reception walls, ceiling panels and immersive interior environments.



Art & Sculptural Panels

Architectural use

Used as sculptural panels and art installations, cast glass becomes a central design feature. The casting process allows large-scale, expressive forms unattainable in conventional flat glass — a medium for commissioned architectural artworks.



The Three Ranges.

CastForm, CrystalForm and CoreForm — three material languages, one cast glass system.

CastForm

What it is

CastForm is engineered for surface expression. Subtle textures, bold geometric reliefs and prismatic surface patterns are cast into one face of the panel, while the other remains smooth. The result is a versatile family that performs equally well as partition glazing, feature surfaces or façade infills.

Defining traits

- Strong surface texture and tactile presence
- One textured face, one smooth face
- Compatible with backlighting and clear lamination
- Suited to interior and protected exterior use

CrystalForm

What it is

CrystalForm is defined by sculptural internal structures — fractures, plumes, voids and crystalline formations cast inside the body of the glass. Light diffuses through and across these structures, giving each panel an internal luminosity and a sense of movement.

Defining traits

- Sculptural internal structures within the glass body
- Dynamic light diffusion and depth
- Strong performance in backlit and lit environments
- Ideal for feature walls and architectural art

CoreForm

What it is

CoreForm is the densest expression of cast glass — solid, monolithic and rich in colour and material weight. Each panel reads as a single body of glass rather than a treated surface, ideal for environments that call for unambiguous material presence.

Defining traits

- Monolithic glass with deep colour saturation
- Significant thickness and material density
- Reads as a single body, not a surface treatment
- Suited to high-impact architectural statements

Product Range.

22 patterns across three ranges — CastForm, CrystalForm and CoreForm.

CastForm



About this range

CastForm presents texture cast into the surface of the glass. The collection spans subtle ripples, layered strata, dense geometric reliefs and bold prismatic patterns — each panel delivering one expressive textured face and one smooth face for clean integration into joinery and glazing systems.

9

PATTERNS IN THIS RANGE

CastForm — The complete range



Bloc

KAPHS-CF-BLOC



Cascade

KAPHS-CF-CASCADE



Drift

KAPHS-CF-DRIFT



Glacia

KAPHS-CF-GLACIA



Luna

KAPHS-CF-LUNA



Silica

KAPHS-CF-SILICA

CastForm — The complete range



Stack

KAPHS-CF-STACK



Strata

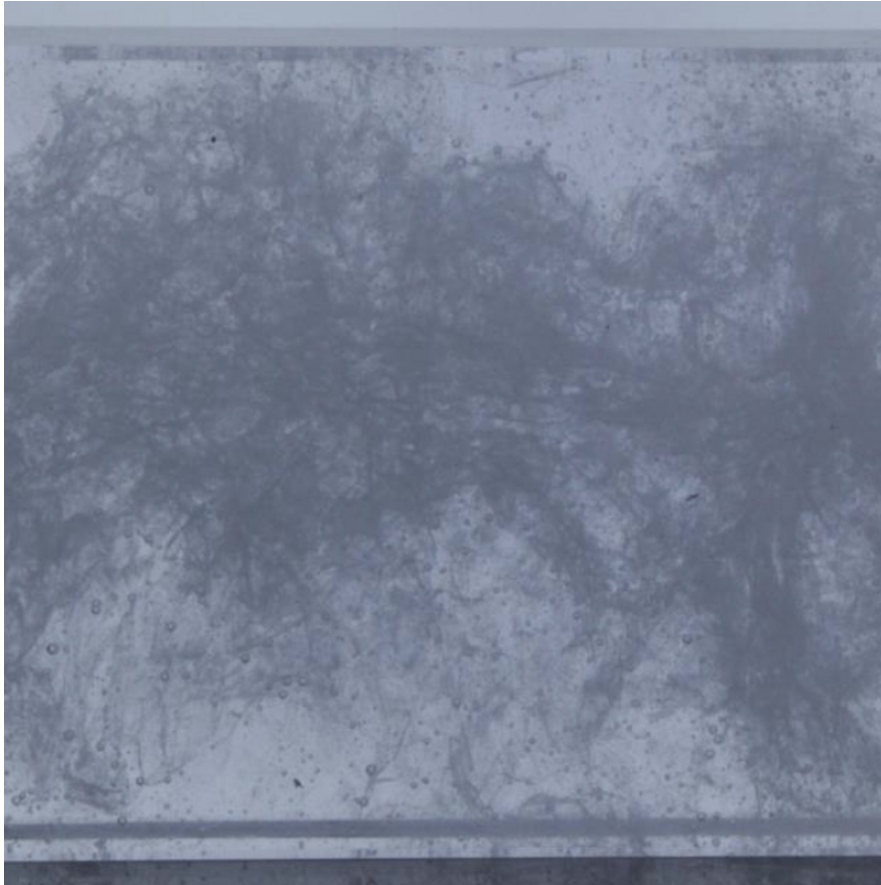
KAPHS-CF-STRATA



Vapour

KAPHS-CF-VAPOUR

CrystalForm



About this range

CrystalForm captures sculptural structures within the body of the glass — fractures, plumes, voids and crystalline formations that diffuse light and animate depth. The range is engineered for environments where light, transparency and material presence are inseparable.

9

PATTERNS IN THIS RANGE

CrystalForm — The complete range



Alabaster

KAPHS-CRF-ALABASTER



Fracta

KAPHS-CRF-FRACTA



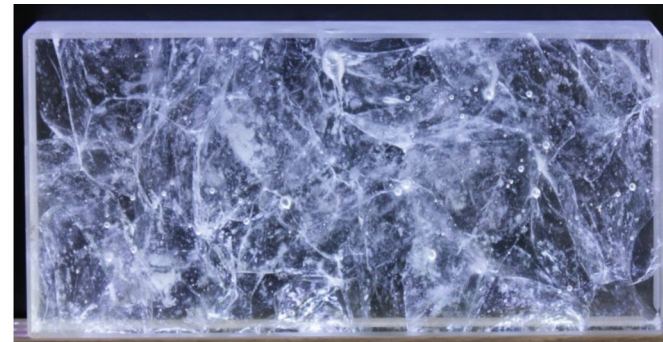
Nebula

KAPHS-CRF-NEBULA



Nimbus

KAPHS-CRF-NIMBUS



Nova

KAPHS-CRF-NOVA



Opal

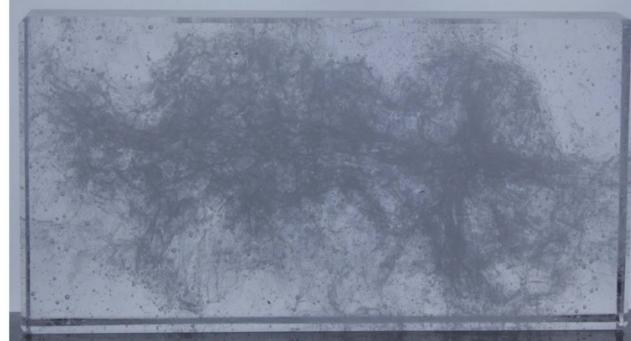
KAPHS-CRF-OPAL

CrystalForm — The complete range



Plane

KAPHS-CRF-PLANE



Plume

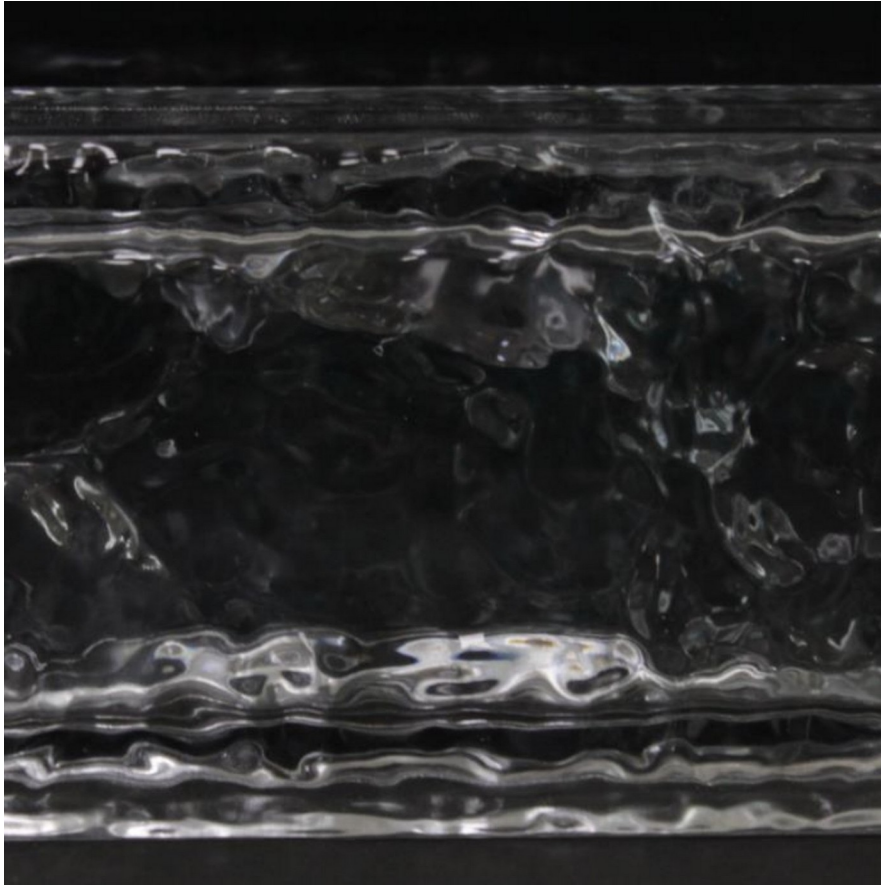
KAPHS-CRF-PLUME



Void

KAPHS-CRF-VOID

CoreForm



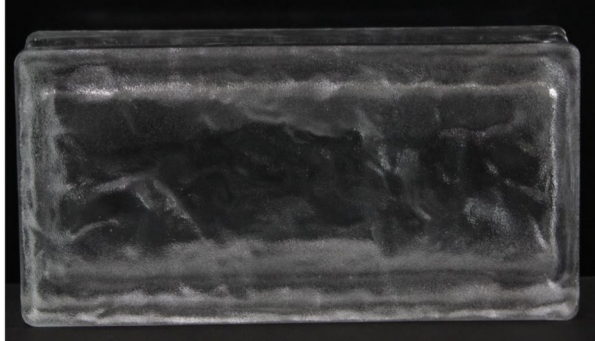
About this range

CoreForm is monolithic, saturated and dense — solid cast glass that reads as a single body of material. Engineered for high-impact installations where colour, weight and presence are the defining qualities.

4

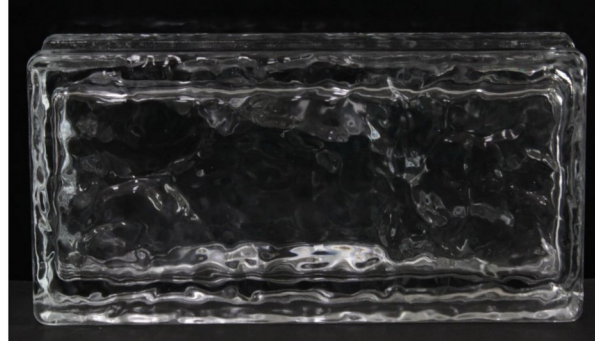
PATTERNS IN THIS RANGE

CoreForm — The complete range



Basalt

KAPHS-COF-BASALT



Molten

KAPHS-COF-MOLTEN



Obsidian

KAPHS-COF-OBSIDIAN



Prism

KAPHS-COF-PRISM

GET IN TOUCH

Let's cast your next surface.

OFFICE

KAPHS Middle East Building Materials Trading LLC

Office 1701, Tower A, Prime Business Centre

Jumeirah Village Circle, Dubai, UAE

CONTACT

+971 4 554 2145

sales@kaphsgroup.com

kaphsgroup.com