

AT 25 | Arquifil Twill

Technical features




Glass application

Properties

OPEN AREA [%]	25
THICKNESS [µm]	470
WEIGHT [g/m2]	295
FABRIC FIBER	PET
PET HUMIDITY ABSORPTION [%]	0.2
FABRIC STANDARD WIDTH [mm]	1580 +/- 20
DIMENSIONAL SHRINKAGE [%]	Length Approx. max -1 Width Approx. max -0,5
AESTHETIC (Outside/inside)	Aluminium-Bronze-Inox-Gold-Champagne Platinum-Copper- Titanium- Custom colors
INTERLAYERS COMPATIBILITY	PVB, Acoustic PVB, EVA, DG41, SENTRYGLAS
COLOR DEVIATION: for metallized as well as printed	Accepted for ΔE from ≤ 3

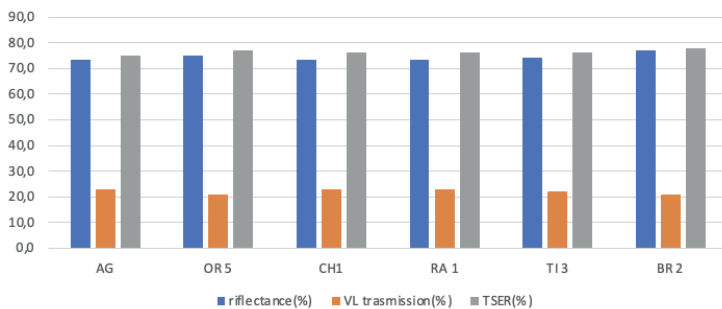
All values stated without tolerance indication are nominal values. All values stated with indication of tolerances are measured based on a product-specific control plan and represent statistical average values.

Performance

LIGHT TRANSMISSION FACTOR		24%
LIGHT REFLECTION FACTOR		ND
SOLAR FACTOR (G-VALUE)		35%

Values

AT 25



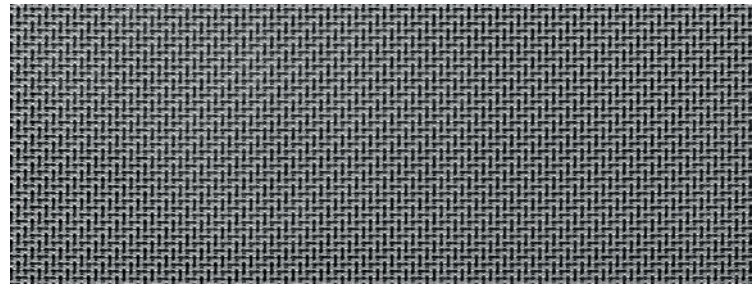
LEGEND

AG: Aluminium | OR 5: Gold CH1: Champagne
RA1: Copper T13: Titanium BR2: Bronze

Interior / Exterior

Full Facades element, glass fins, balaustrades, walk-way coverings, stairs, wall pannels and claddings, room dividers, shop-concept, interior partition, privacy section, design components, etc.

Miniature



Certifications

Arquifil Fabrics have been tested according to:
EN 410:2011 / EN 673:2011 / UNI EN ISO 12543-4: 2022

Suggestion on interlayer

For exterior applications with open edges or interior applications with high humidity, it is recommended to use SentryGlass to eliminate the possibility of moisture infiltration.

For exterior applications with fully framed, edge-sealed glass or interior applications, the responsibility for choosing the type of interlayer to use is left to the laminating company.