



 **KAPHS**

CHAINFORM

Chainlink Curtain Mesh.

*An architectural curtain system
in 13 architectural finishes.*

PRODUCT CATALOGUE

2026 EDITION · kaphsgroup.com

Contents

A complete guide to the KAPHS ChainForm range — overview, applications, fixing systems and the full 13-finish architectural library.

01	Introduction	03
02	Product Description	04
03	Applications	05
04	Fixing Systems	09
05	Product Range	15
06	Customisation	29
07	Contact	30

INTRODUCTION

A flowing architectural language in metal.

KAPHS ChainForm is a chainlink curtain mesh system engineered with a continuous, interlocking loop structure — combining flexibility, strength and a refined architectural presence.

Its open geometry transmits light, creates depth through subtle reflection, and adapts seamlessly to ceilings, dividers, wall coverings and feature panels across interior and architectural projects worldwide.

13

FINISHES

5

FIXING SYSTEMS

∞

APPLICATIONS

PRODUCT DESCRIPTION

Strength, flexibility and depth from a single loop.

Architectural chainlink mesh

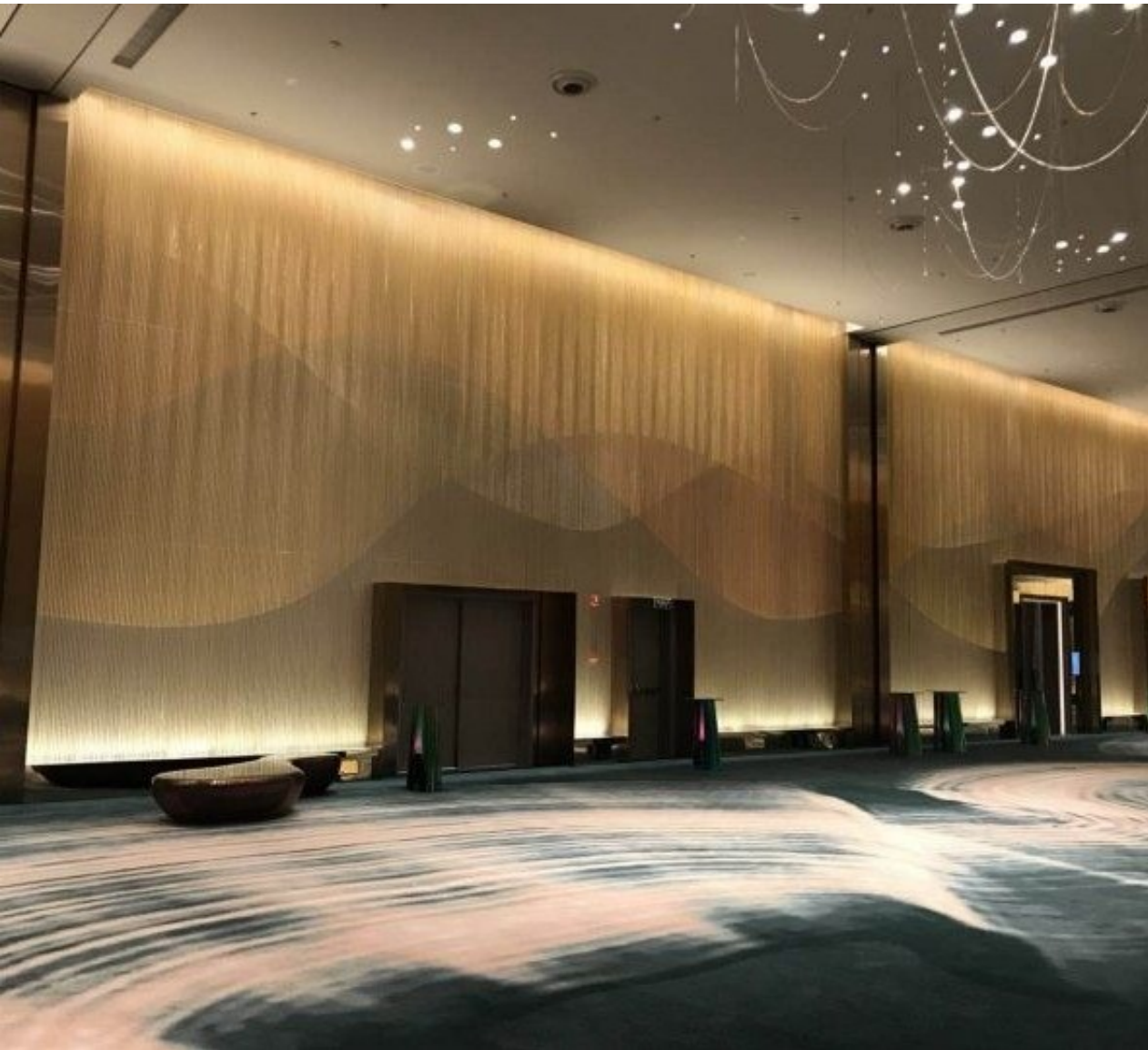
ChainForm is a high-quality chainlink curtain mesh system engineered with a continuous interlocking loop structure that delivers flexibility, strength and a refined architectural mesh appearance. Designed for use within laminated glass and interior applications.

The controlled loop geometry creates a consistent, fluid pattern — a softer visual alternative to conventional chainlink systems. Its open structure transmits light while generating subtle reflections and shadow depth. Developed as a single, uniform system, ChainForm maintains consistent geometry across all applications, with variation achieved through a curated range of architectural finishes.



03 Applications

Where ChainForm performs — interior walls, ceilings and architectural dividers.



APPLICATION

Wall Coverings

ChainForm is an ideal solution for wall coverings — combining chainlink curtain mesh aesthetics with architectural performance. Its interlocking loop structure introduces depth, texture and subtle reflectivity to vertical surfaces, enhancing residential and commercial interiors. Applied as a standalone mesh or within framed systems, it creates visually dynamic walls that balance openness and material presence — suited to feature walls, cladding and decorative facades.



APPLICATION

Dividers

As a space divider, ChainForm provides a refined way to define areas while maintaining visual openness and light flow. The chainlink mesh structure allows partial transparency, creating separation without fully enclosing a space. Ideal for offices, hospitality and retail settings where flexibility and spatial continuity are essential, ChainForm's durability and range of architectural finishes deliver strong performance across interior applications.



APPLICATION

Ceiling Designs

ChainForm is highly effective in ceiling designs, where flowing geometry and reflective qualities enhance overhead surfaces. Used as suspended panels or integrated within ceiling systems, ChainForm introduces movement and visual interest while allowing light and air to pass through. Particularly suited to feature ceilings in commercial and public spaces, contributing to a layered architectural effect and an enhanced perception of depth and scale.

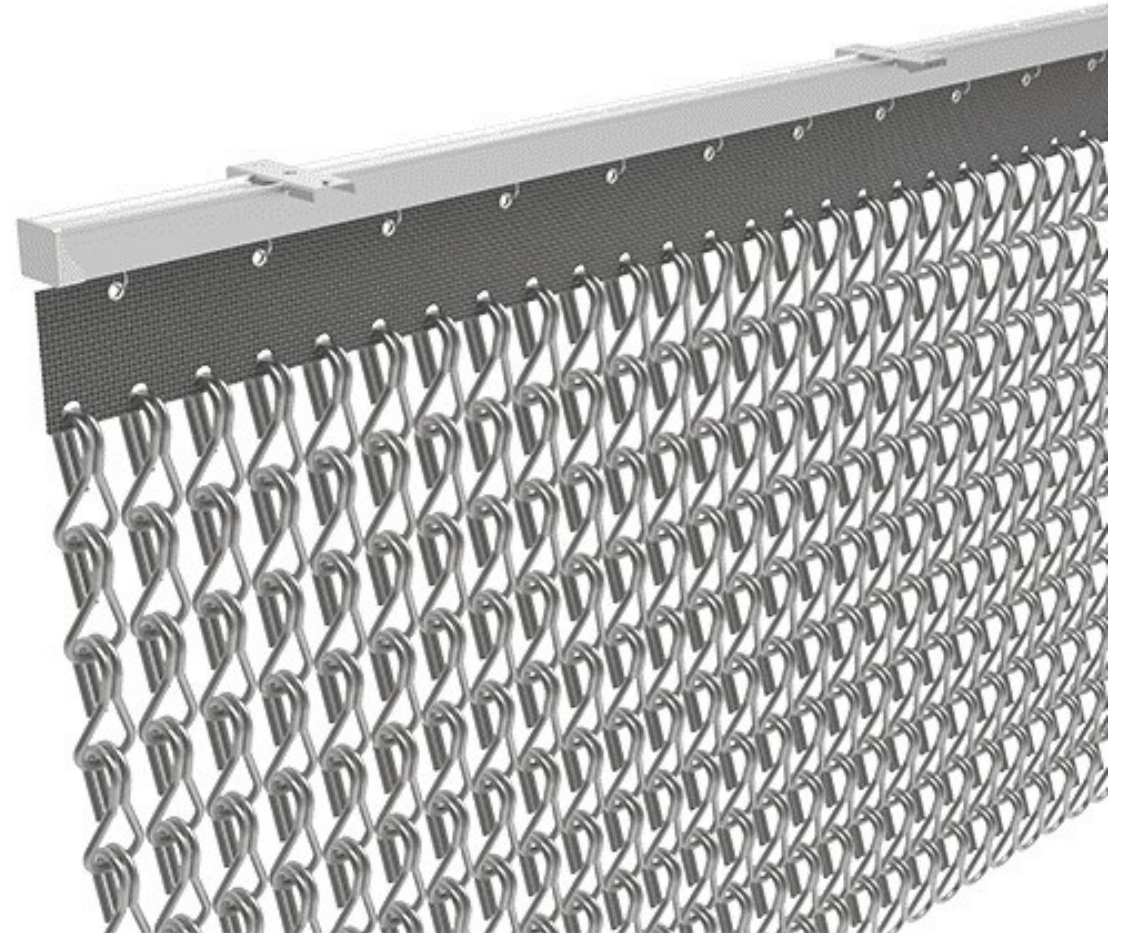
04 Fixing Systems

Five engineered fixing systems — from suspended curtains to flush wall-mounted panels.

FIXING SYSTEMS

Hanging Ceiling Mount

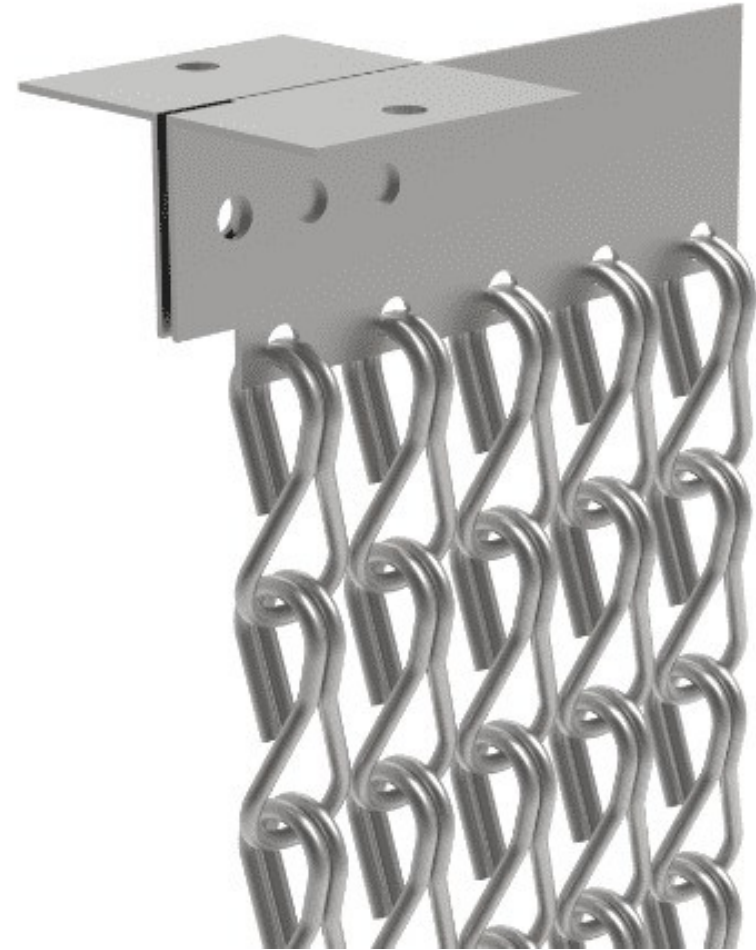
The Hanging Ceiling Mount Fixing System suspends ChainForm chainlink curtain mesh from overhead structures, allowing it to hang freely and express its natural flexibility. Ideal for ceiling-mounted applications, it delivers a flowing, lightweight appearance suited to feature ceilings and spatial dividers.



FIXING SYSTEMS

Plate Ceiling Mount

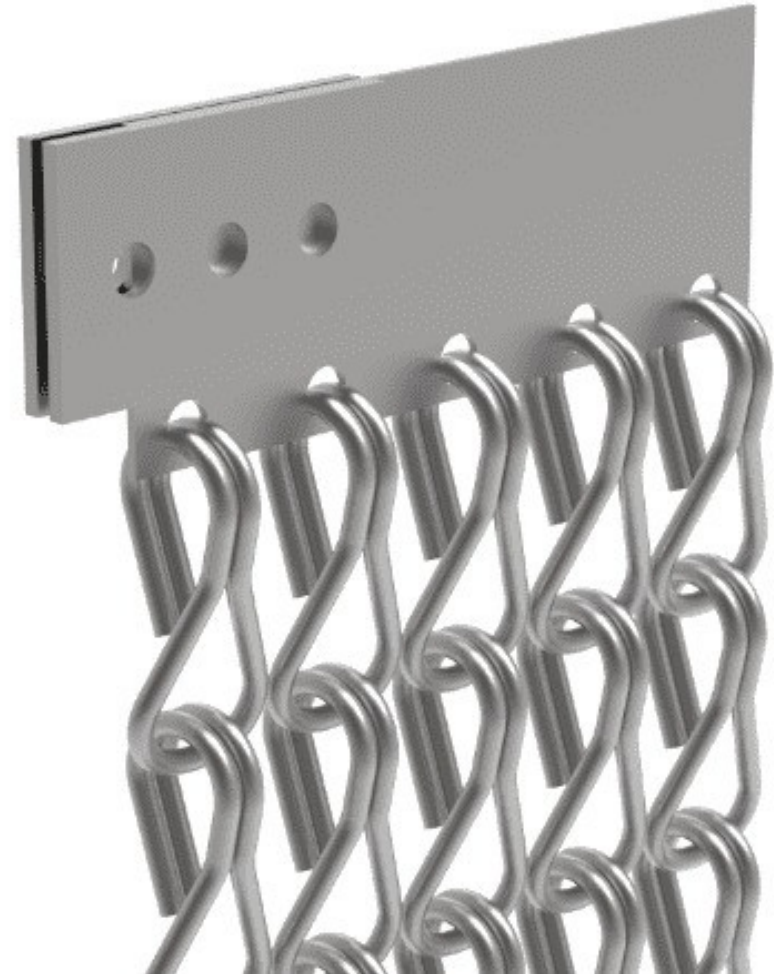
The Plate Ceiling Mount Fixing System provides a secure method for fixing ChainForm directly to ceilings. A rigid plate connection ensures stability and precise alignment, making it suitable for clean, fixed installations in both interior and exterior environments.



FIXING SYSTEMS

Plate Wall Mount

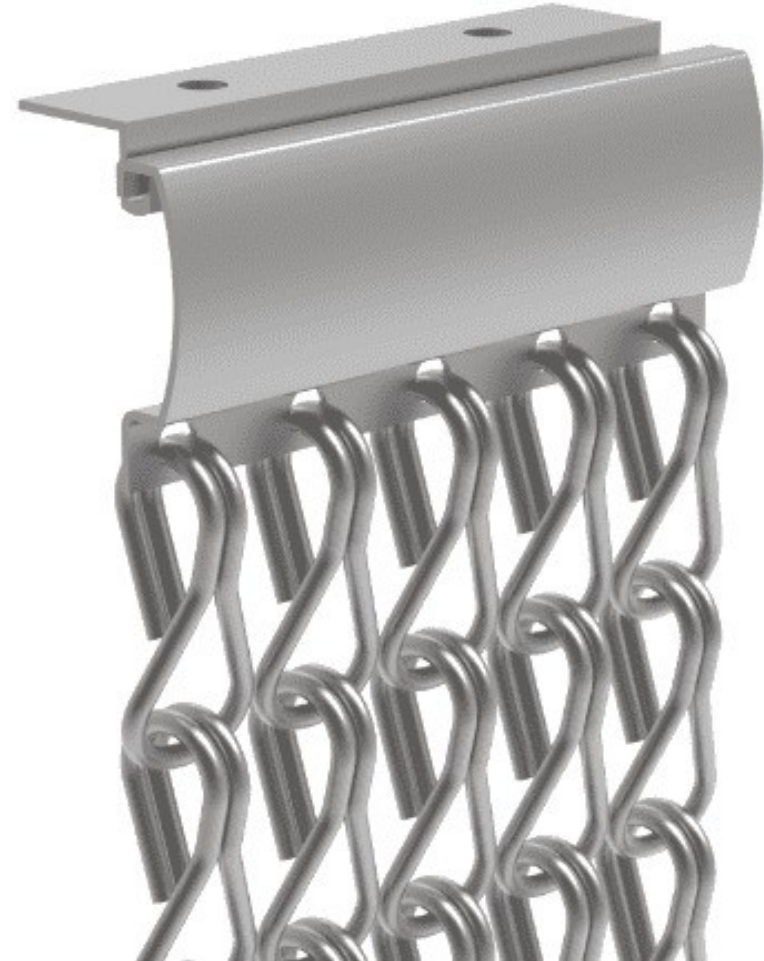
The Plate Wall Mount Fixing System allows ChainForm to be mounted directly onto vertical surfaces. It offers a strong, flush fixing solution — ideal for wall cladding, feature panels and decorative applications where the mesh sits tight to the substrate.



FIXING SYSTEMS

Rail Ceiling Mount

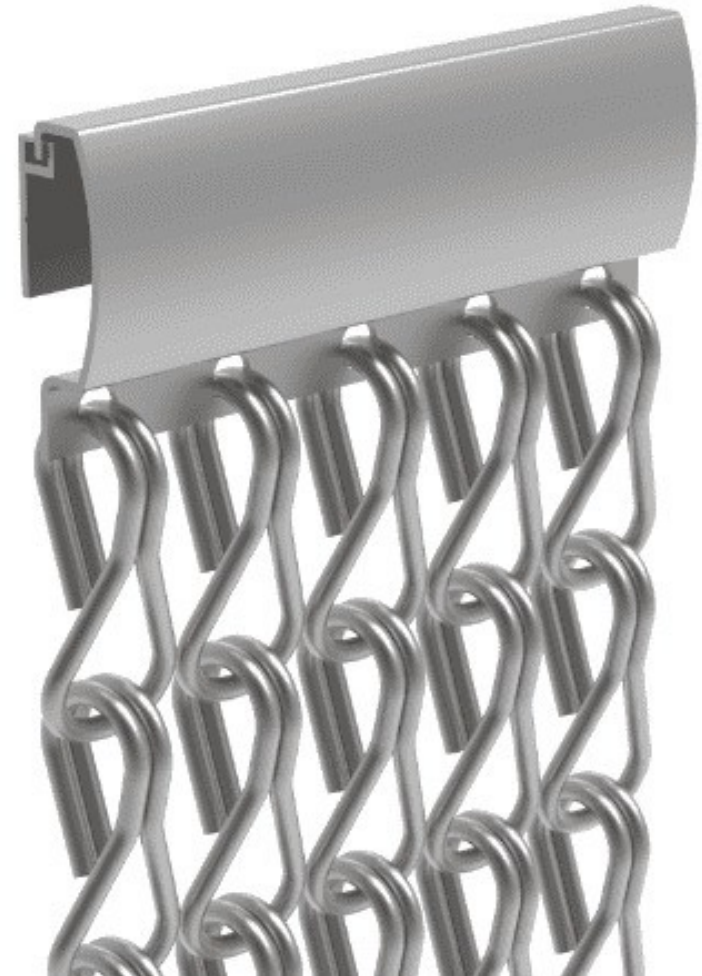
The Rail Ceiling Mount Fixing System uses a continuous rail to support ChainForm from above. It enables consistent alignment with the potential for controlled movement, making it ideal for flexible or sliding ceiling installations.



FIXING SYSTEMS

Rail Wall Mount

The Rail Wall Mount Fixing System provides a streamlined way to install ChainForm along walls using a continuous rail profile. It ensures uniform spacing and offers adjustability — suitable for both decorative and functional applications.



05 Product Range

Thirteen architectural finishes — one chainlink curtain system. From muted matte tones to high-lustre metallic surfaces.

CHAINFORM

AM

■ Warm taupe tone

FINISH CODE

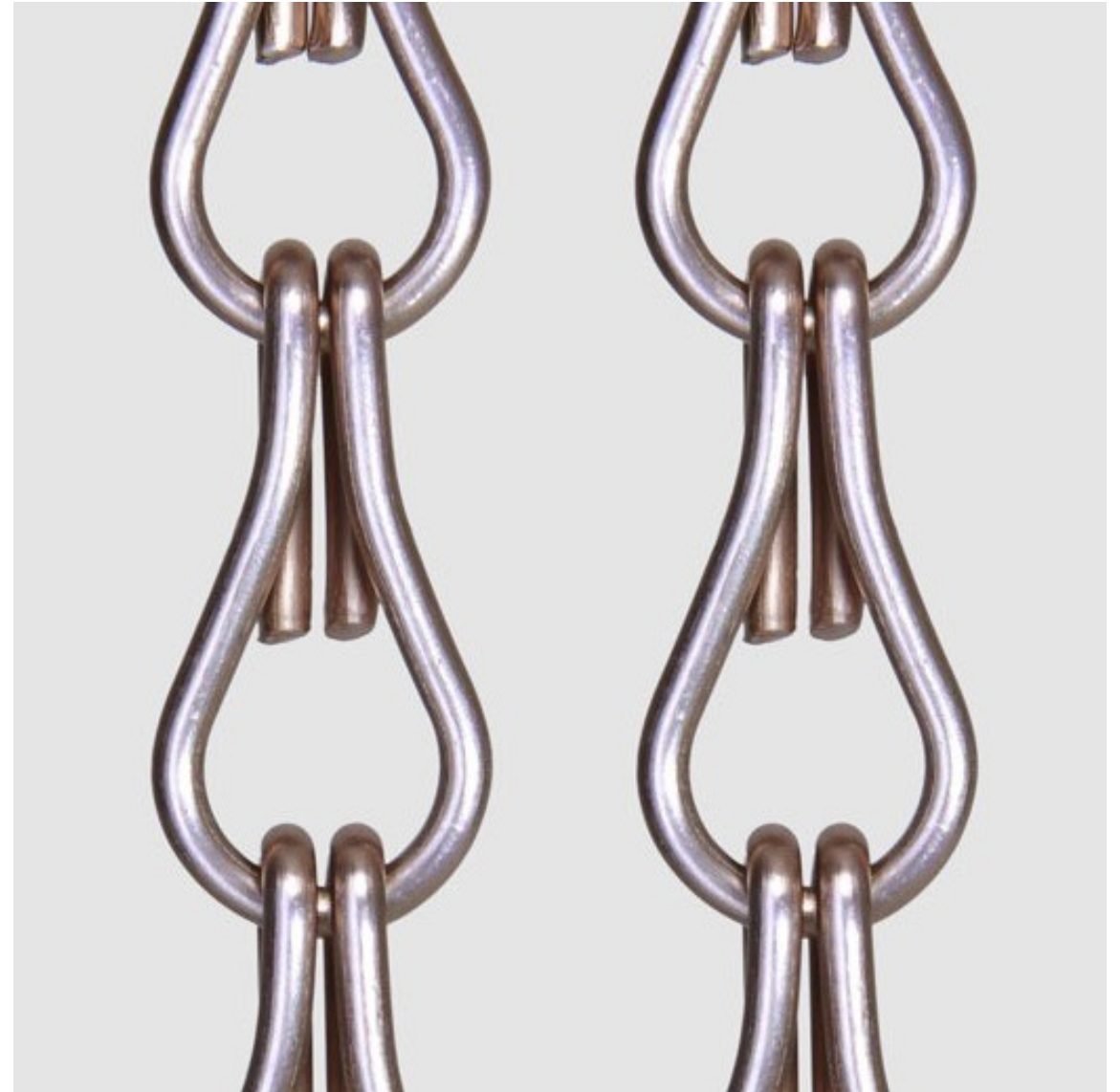
ChainForm – AM

SYSTEM

Chainlink Curtain Mesh

A muted, warm-neutral architectural finish — soft, refined and quietly versatile across interior environments.

Attribute	Specification
Geometry	Continuous interlocking loop
Application	Interior architectural surfaces
Mounting	Hanging, plate or rail systems



CHAINFORM

BG

■ Deep black tone

FINISH CODE

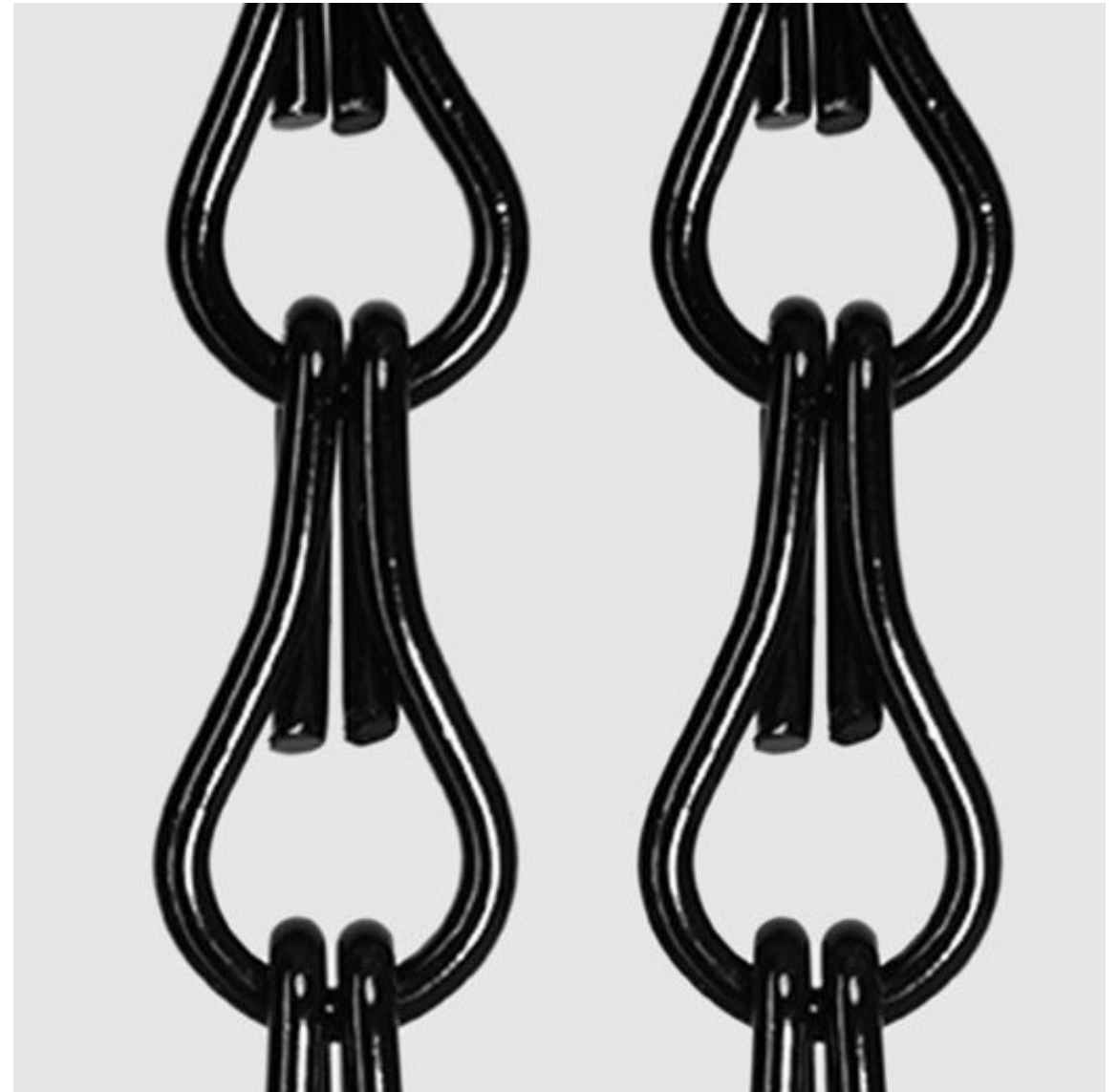
ChainForm - BG

SYSTEM

Chainlink Curtain Mesh

A high-contrast black finish that defines space with depth and presence — engineered for graphic, statement applications.

Attribute	Specification
Geometry	Continuous interlocking loop
Application	Interior architectural surfaces
Mounting	Hanging, plate or rail systems



CHAINFORM

GG

 Forest green tone

FINISH CODE

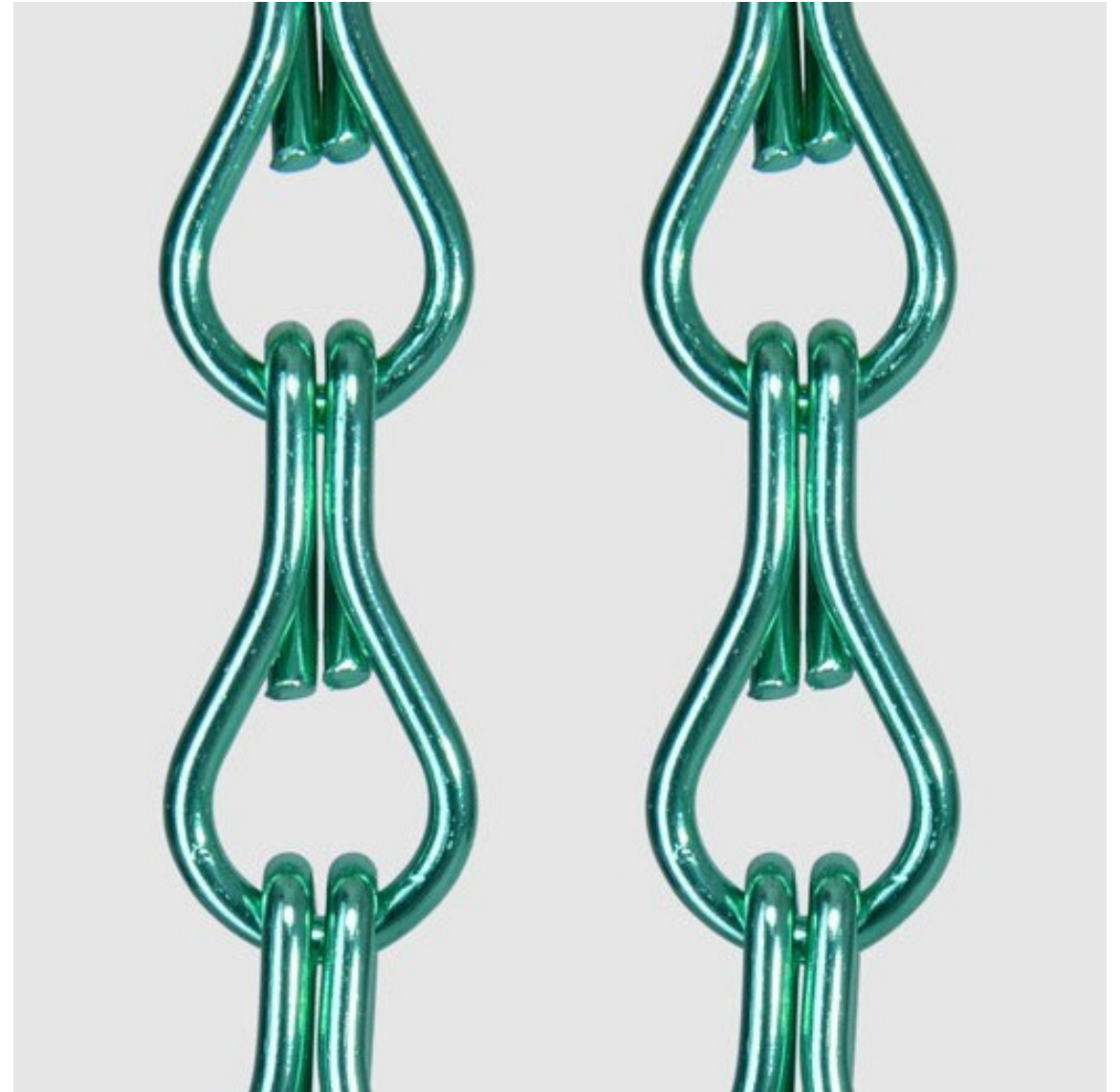
ChainForm – GG

SYSTEM

Chainlink Curtain Mesh

A rich green-toned finish with a glossy surface — distinctive, contemporary and engineered for feature interiors.

Attribute	Specification
Geometry	Continuous interlocking loop
Application	Interior architectural surfaces
Mounting	Hanging, plate or rail systems



CHAINFORM

GM

■ Soft gold tone

FINISH CODE

ChainForm – GM

SYSTEM

Chainlink Curtain Mesh

A matte gold-toned finish with warm undertones — balanced, refined and architecturally versatile.

Attribute	Specification
Geometry	Continuous interlocking loop
Application	Interior architectural surfaces
Mounting	Hanging, plate or rail systems



CHAINFORM

LG

 Olive green tone

FINISH CODE

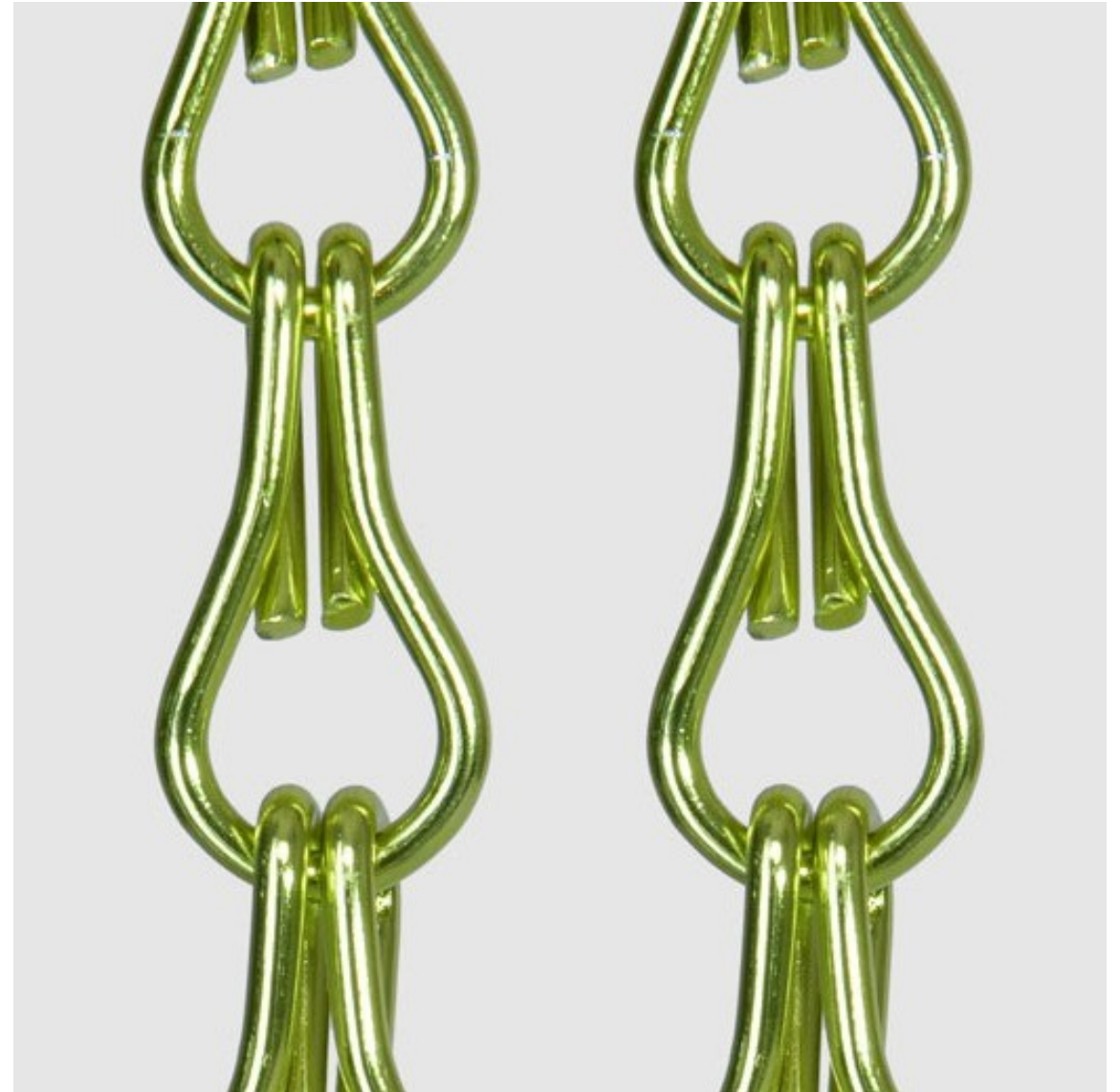
ChainForm - LG

SYSTEM

Chainlink Curtain Mesh

A muted olive-green finish offering a contemporary architectural character with subtle natural warmth.

Attribute	Specification
Geometry	Continuous interlocking loop
Application	Interior architectural surfaces
Mounting	Hanging, plate or rail systems



CHAINFORM

MS

■ Neutral silver tone

FINISH CODE

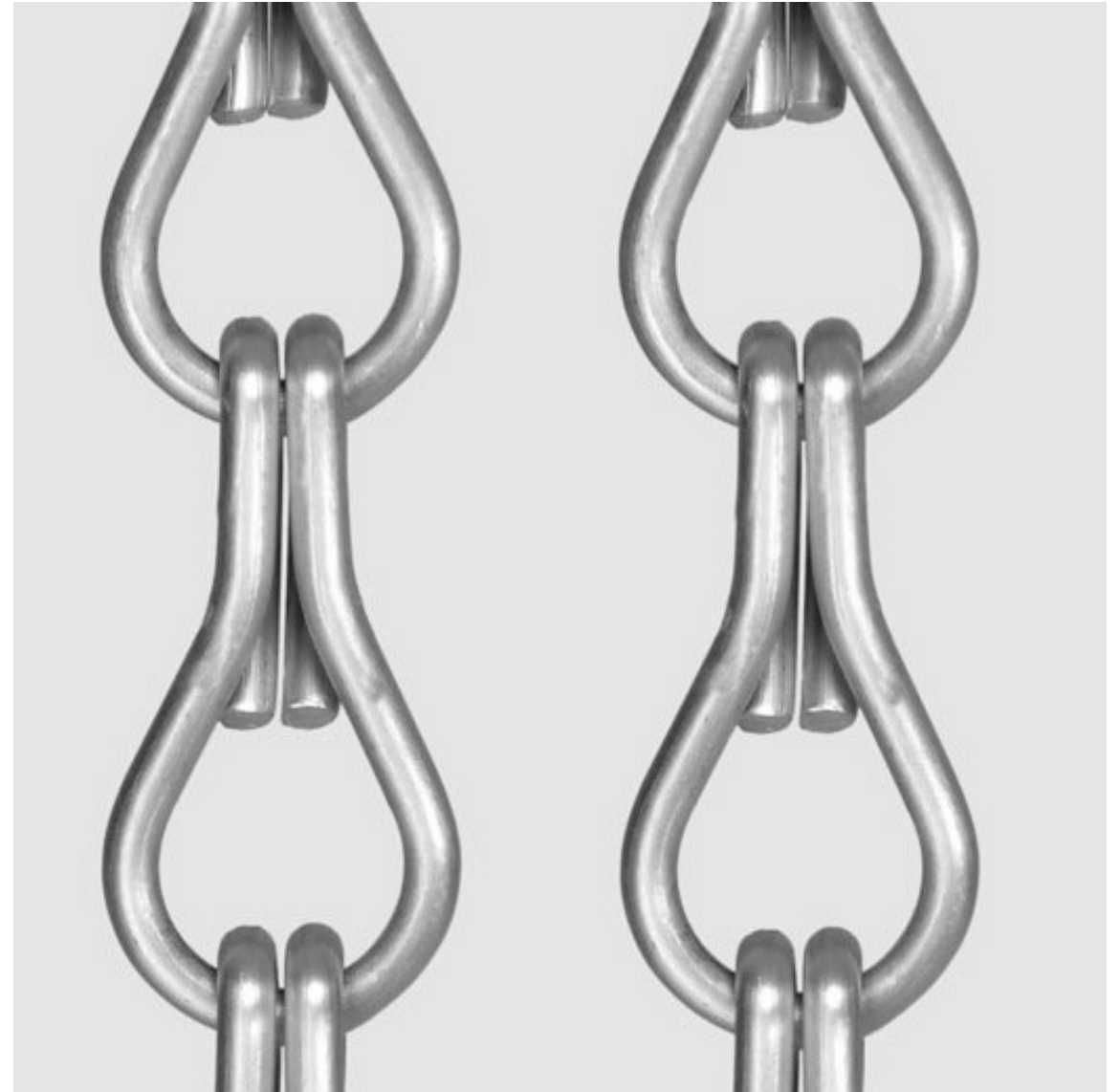
ChainForm - MS

SYSTEM

Chainlink Curtain Mesh

A neutral silver finish with a soft, matte surface — quiet, adaptable and suited to refined interior palettes.

Attribute	Specification
Geometry	Continuous interlocking loop
Application	Interior architectural surfaces
Mounting	Hanging, plate or rail systems



CHAINFORM

PC

 Copper bronze tone

FINISH CODE

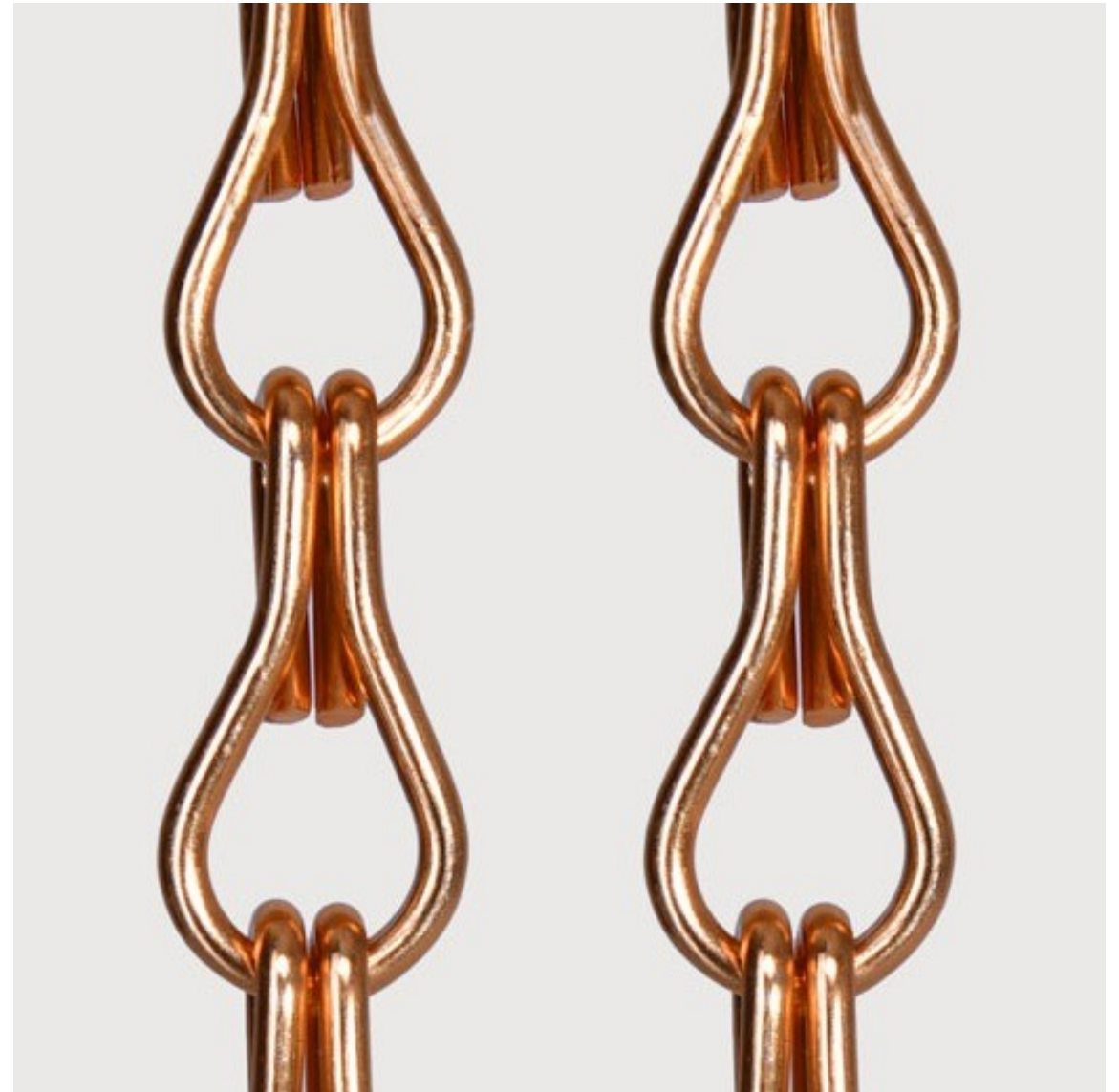
ChainForm - PC

SYSTEM

Chainlink Curtain Mesh

A warm copper-bronze finish that introduces depth, warmth and architectural texture to interior surfaces.

Attribute	Specification
Geometry	Continuous interlocking loop
Application	Interior architectural surfaces
Mounting	Hanging, plate or rail systems



CHAINFORM

PG

 Pink lustre tone

FINISH CODE

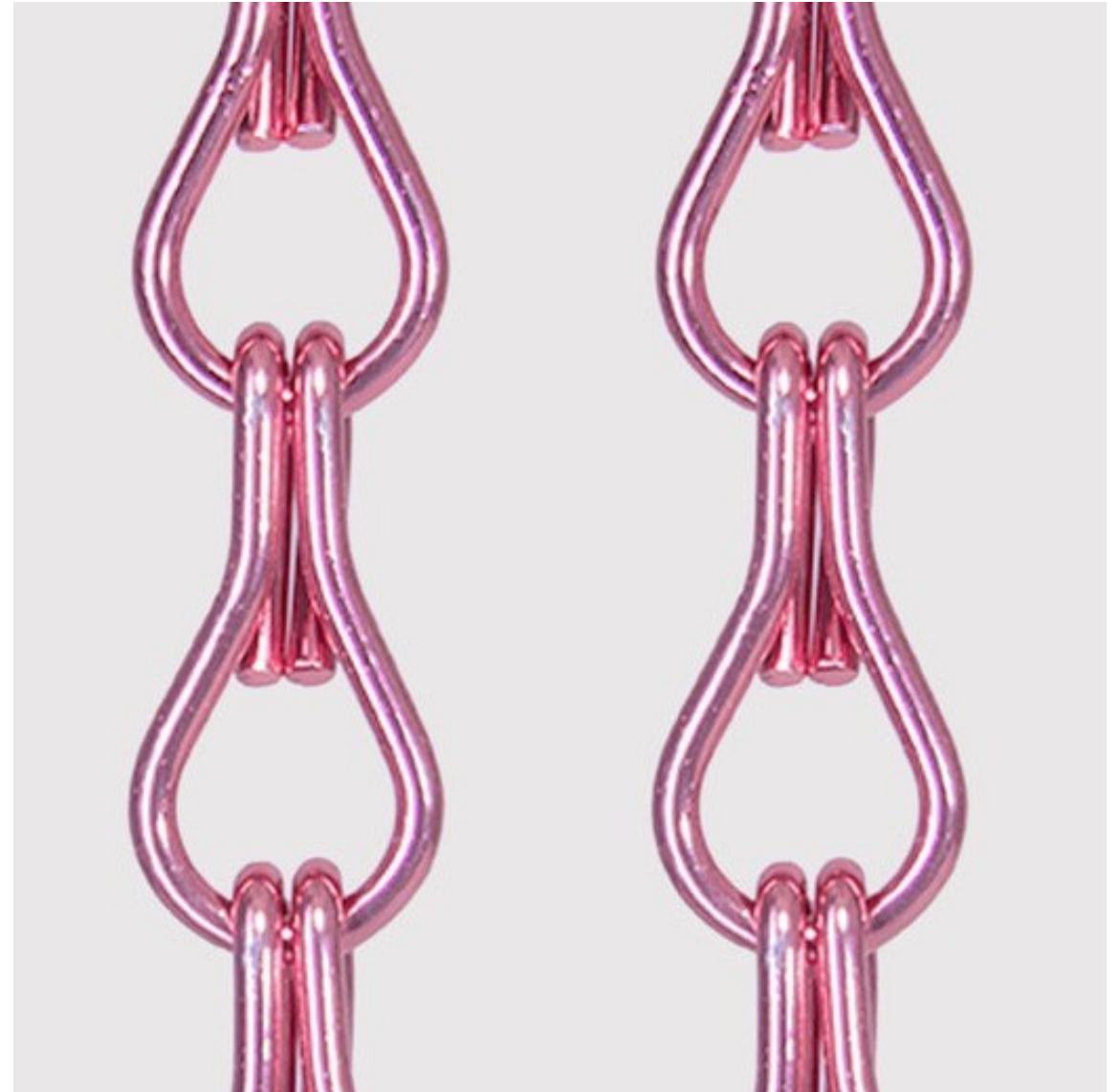
ChainForm - PG

SYSTEM

Chainlink Curtain Mesh

A soft pink-toned finish with a lustrous surface — distinctive, contemporary and visually expressive.

Attribute	Specification
Geometry	Continuous interlocking loop
Application	Interior architectural surfaces
Mounting	Hanging, plate or rail systems



CHAINFORM

RGG

 Bronze gold tone

FINISH CODE

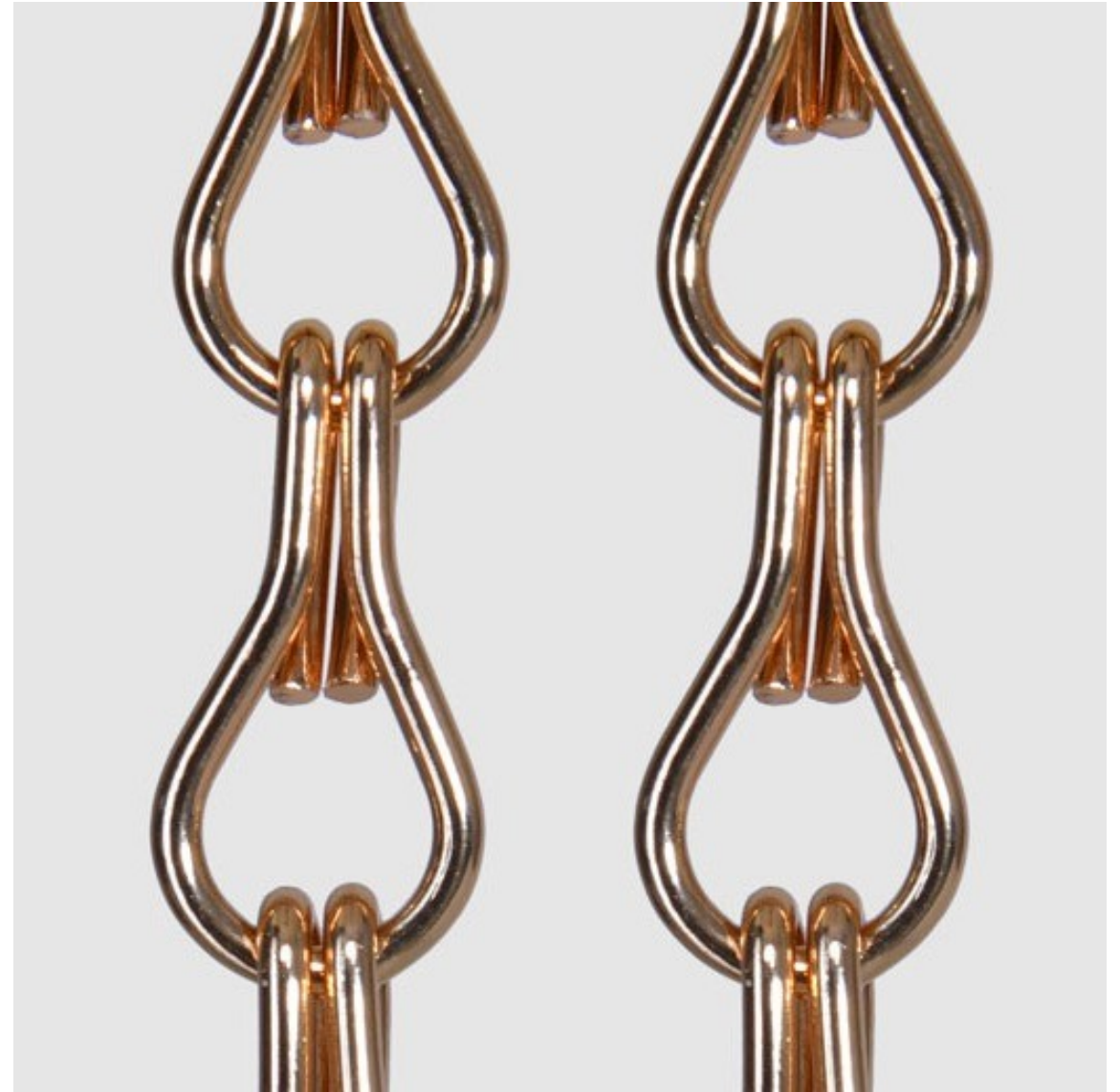
ChainForm - RGG

SYSTEM

Chainlink Curtain Mesh

A glossy bronze-gold finish with warm, luminous undertones — engineered for elevated decorative surfaces.

Attribute	Specification
Geometry	Continuous interlocking loop
Application	Interior architectural surfaces
Mounting	Hanging, plate or rail systems



CHAINFORM

RGM

 Muted bronze tone

FINISH CODE

ChainForm - RGM

SYSTEM

Chainlink Curtain Mesh

A matte bronze-toned finish — softly warm and tactile, with restrained material presence.

Attribute	Specification
Geometry	Continuous interlocking loop
Application	Interior architectural surfaces
Mounting	Hanging, plate or rail systems



CHAINFORM

RM

 Deep red tone

FINISH CODE

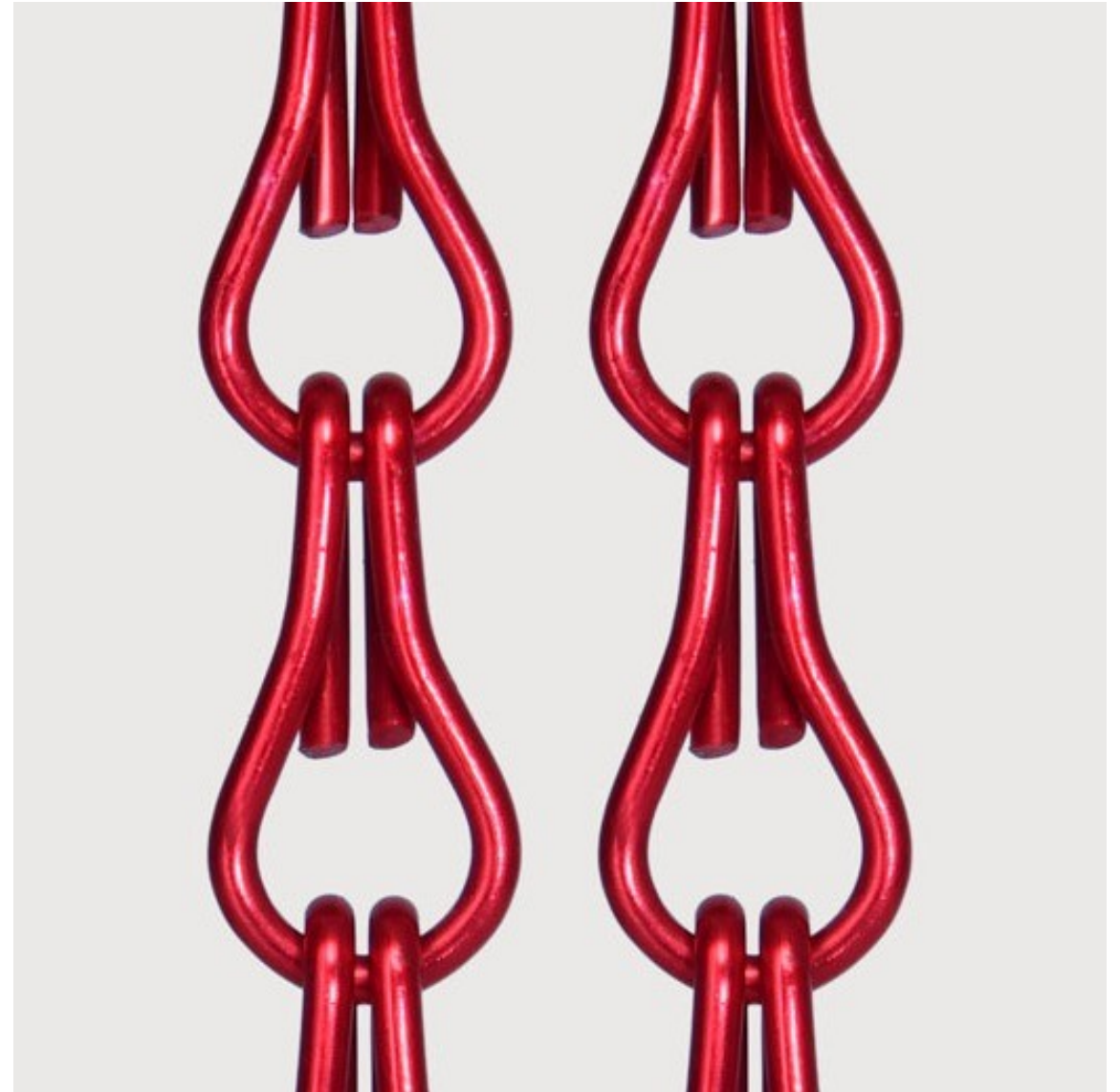
ChainForm - RM

SYSTEM

Chainlink Curtain Mesh

A deep red architectural finish — bold, characterful and engineered for statement interior applications.

Attribute	Specification
Geometry	Continuous interlocking loop
Application	Interior architectural surfaces
Mounting	Hanging, plate or rail systems



CHAINFORM

SM

■ Sage neutral tone

FINISH CODE

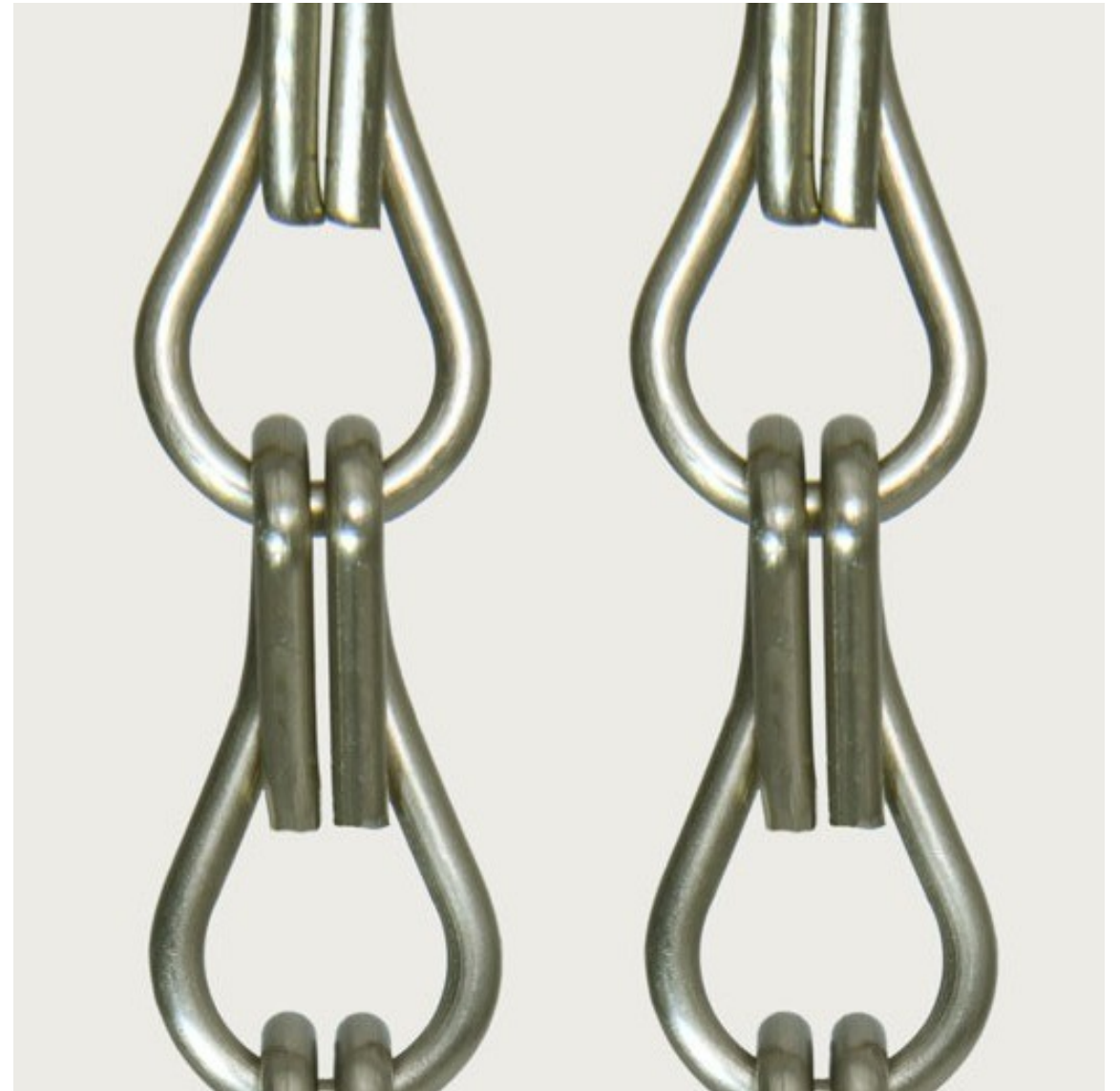
ChainForm – SM

SYSTEM

Chainlink Curtain Mesh

A muted sage-neutral finish balancing subtle warmth and a refined, non-reflective surface character.

Attribute	Specification
Geometry	Continuous interlocking loop
Application	Interior architectural surfaces
Mounting	Hanging, plate or rail systems



CHAINFORM

TG

 Teal blue tone

FINISH CODE

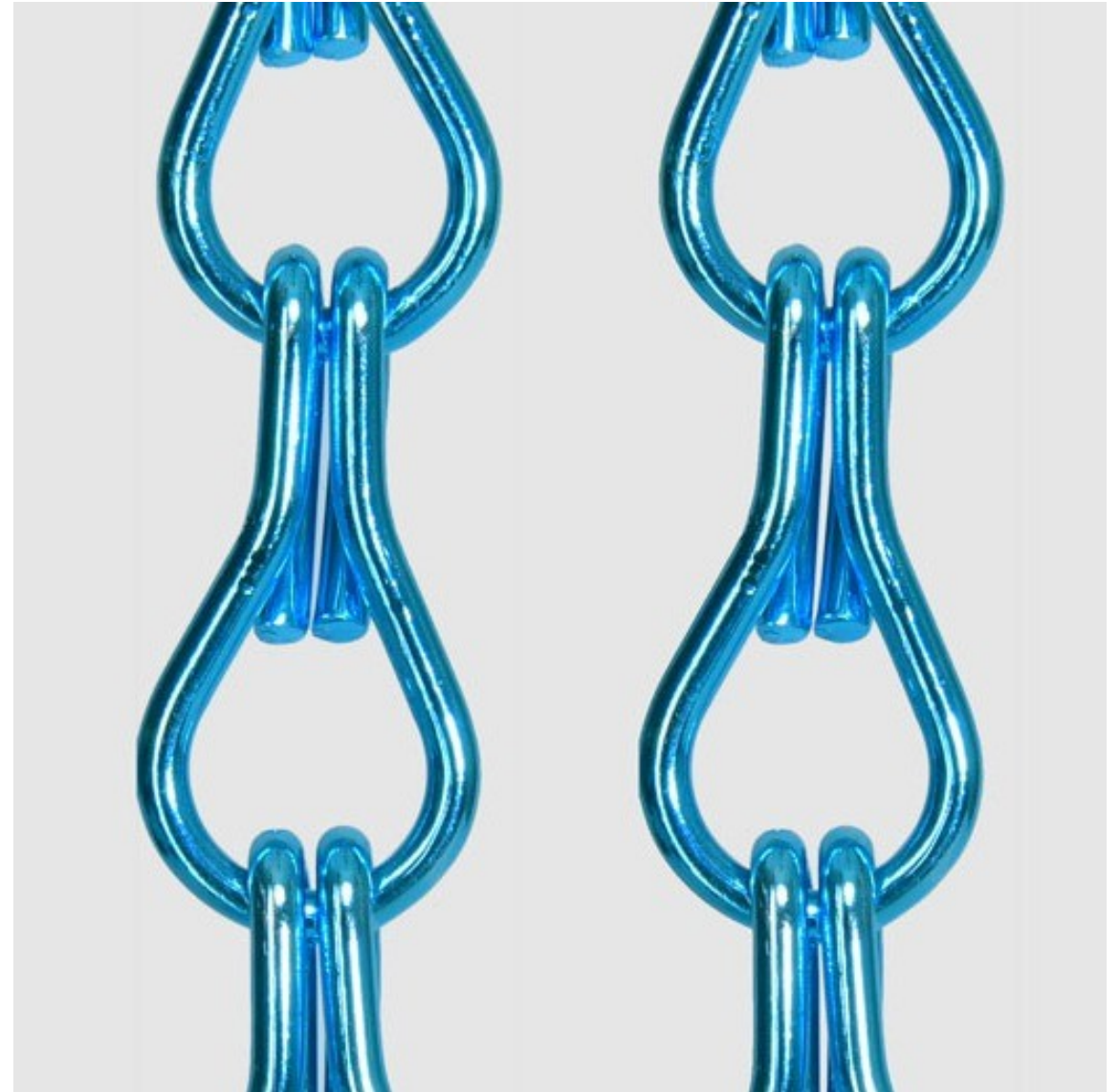
ChainForm - TG

SYSTEM

Chainlink Curtain Mesh

A vivid teal-blue finish that delivers depth, contrast and a distinctive architectural identity.

Attribute	Specification
Geometry	Continuous interlocking loop
Application	Interior architectural surfaces
Mounting	Hanging, plate or rail systems



CUSTOMISATION & MATERIALS

Built to specification.

ChainForm maintains a single, uniform chainlink geometry. Variation is delivered through material, finish, panel size and fixing system — engineered to project requirements.

Materials

- Aluminium
- Stainless steel
- Mild / galvanised steel (on request)

Finishes

- 13 architectural finishes
- Anodized / brushed / polished
- Matte and glossy options

Panel sizes

- Standard panels
- Cut-to-size
- Custom drops & widths

Applications

- Walls & ceilings
- Dividers & screens
- Laminated glass interlayer



MIDDLE EAST

GET IN TOUCH

Let's specify
your next interior.

OFFICE

KAPHS Middle East Building Materials Trading LLC

Office 1701, Tower A, Prime Business Centre

Jumeirah Village Circle, Dubai, UAE

CONTACT

+971 4 554 2145

sales@kaphsgroup.com

kaphsgroup.com