



L A M B E R T S   L I N I T ™   /   A R C H I T E C T U R A L   C A S T   G L A S S

# U-Channel Glass

*A precision-engineered cast glass system  
for façades, partitions, and architectural daylighting.*

O F F I C I A L   R E P R E S E N T A T I V E   /   M I D D L E   E A S T

**LAMBERTS**  
est. 1887

P R O D U C T   C A T A L O G U E

2 0 2 6   E D I T I O N

## TABLE OF CONTENTS

# Contents

*An overview of the KAPHS U-Channel Glass programme: product description, applications, finishes, fixing systems, reference projects across the GCC, and the full Lamberts LINIT™ profile range.*

01	Product Description	03
02	Applications	06
03	Finishes	11
04	Fixing Systems	18
05	Project References	23
06	Product Range	33
07	Specifications	42
08	Contact	43

SECTION

01

# Product Description

*A precision-engineered cast glass system, manufactured by Lamberts of Germany.*

## 01 — INTRODUCTION

# Cast glass, refined for architecture.

LAMBERTS LINIT™ Channel Glass is a precision-engineered, U-profile cast glass system designed for contemporary architectural façades and interior glazing. Manufactured in Germany by Lamberts (est. 1887), it combines structural performance with refined light diffusion.

KAPHS is the official representative for Lamberts LINIT™ Channel Glass across the Middle East since 2006 — supplying the full range with project-level technical support.

MANUFACTURED BY

**LAMBERTS**  
est. 1887

## 01 — SYSTEM PARAMETERS

# Standard dimensions, modular flexibility.

LINIT™ Channel Glass is produced in standardised profiles, enabling modular design with flexibility for custom architectural requirements. Profile widths span 232–498 mm; flange heights are 41, 60, or 80 mm; glass thickness is 6 or 7 mm.

Lengths reach up to seven metres depending on project conditions, glass type, and structural design. Single or double-glazed configurations are available, and the system supports both vertical and horizontal orientation.

7 m

MAX LENGTH

4

PROFILE WIDTHS

20+

YEARS IN REGION



SECTION

# 02

# Applications

*Where U-Channel Glass performs — façades, partitions, and wall cladding.*

## 02 — APPLICATION

# Façades & building envelopes.

LINIT™ Channel Glass is ideal for external façades and curtain wall systems, creating seamless, translucent building skins with minimal framing. The U-profile geometry interlocks vertically without intermediate mullions, producing uninterrupted vertical lines and a soft, diffused light signature.

In UAE and GCC climates, LINIT™ supports energy-efficient façade design through compatibility with thermal insulation systems, low-iron and coated glass options, and shading via ceramic frit or PrismaSolar profiles.





## 02 — APPLICATION

## Interior partitions & feature walls.

Inside the building, channel glass provides visual separation without compromising light flow. Translucency softens harsh contrasts between zones, while the cast surface diffuses light evenly — well suited to partitions, feature walls, and open-plan environments in commercial, hospitality, and cultural projects.

Sandblasted and Solar profiles increase privacy where required; clear and low-iron profiles maximise transparency and brightness.

## 02 — APPLICATION

# Wall cladding & feature surfaces.

Channel glass also functions as an architectural cladding element. Mounted over backlit or solid substrates, it transforms walls into sculpted, light-modulated surfaces — a finish frequently specified for retail flagships, lobbies, and atria where the building skin is intended to perform as a continuous lit volume.





## 02 — APPLICATION

## Twin-wall façade installations.

Where higher thermal performance, sound attenuation, or solar control is required, LINIT™ is specified as a double-glazed twin-wall assembly. Two opposing U-profiles form an insulating cavity that can be combined with the Thermolight system, low-emissivity coatings, or solar profiles — extending channel glass into high-performance façade territory.

SECTION

# 03

# Finishes

*Five surfaces and one insulation system — engineered for light, privacy, and performance.*

## FINISH

# Clear Glass

Standard cast glass finish offering maximum light transmission with a subtle textured surface. Specified where natural daylight is a priority and a soft, even diffusion across the channel face is desired.

- Highest light transmission across the range
- Subtle cast texture from manufacturing process
- Pairs with low-iron for added neutrality



## FINISH

# Low-Iron Glass

Extra-clear glass with reduced iron content, providing higher transparency and neutral colour rendering. Used where colour fidelity through the glass — and a cleaner, less green edge — is critical.

- Reduced iron content for neutral tone
- Higher visible light transmission
- Recommended for hospitality and retail interiors



## FINISH

# Sandblasted Finish

A treated surface that delivers increased privacy and soft light diffusion. Commonly specified for interior partitions and façades where reduced visibility is required without sacrificing illumination.

- Acid-resistant matte surface
- Diffuses direct sunlight evenly
- Available across all eight Lamberts LINIT™ profiles



## FINISH

# Ceramic Frit Coating

Applied patterns fused into the glass surface to create solar shading, visual screening, and design customisation, while maintaining the durability of the cast glass substrate.

- Permanent fired-on pattern
- Customisable density and geometry
- Doubles as solar control



## FINISH

# Colour Enamelling

Factory-applied coloured coatings enable bold façade identity, with long-lasting resistance to weathering and UV exposure. Available in custom RAL references on project specification.

- Full RAL spectrum on request
- UV-stable and weather-resistant
- Suitable for back-lit and accent surfaces



## FINISH

# LINIT™ Thermolight

An integrated insulation system that enhances thermal performance and energy efficiency. Designed for double-glazed and high-performance façade assemblies in the Middle East climate.

- Engineered for UAE/GCC heat loads
- Compatible with twin-wall LINIT™ assemblies
- Improves U-value without sacrificing diffusion



SECTION

04

# Fixing Systems

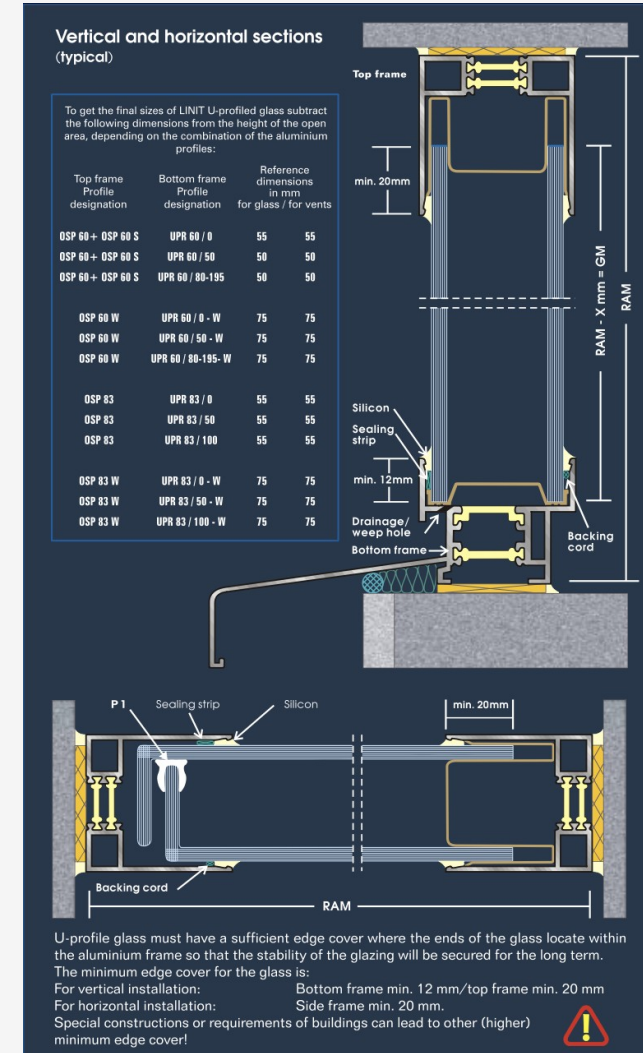
*Aluminium framing engineered to match the LINIT™ profile family.*

## FIXING SYSTEM

# Aluminium frame profiles

A comprehensive selection of bottom (UPR), top, and side profiles (OSP) offers flexibility for standard and custom glazing solutions. Profiles ship in standard, reinforced, and extended configurations — compatible with vertical and horizontal LINIT™ installations.

- Bottom (UPR), top, and side (OSP) profile families
- Standard, reinforced, and extended versions
- Curved profiles available for radius façades
- Custom profiles developed on project request

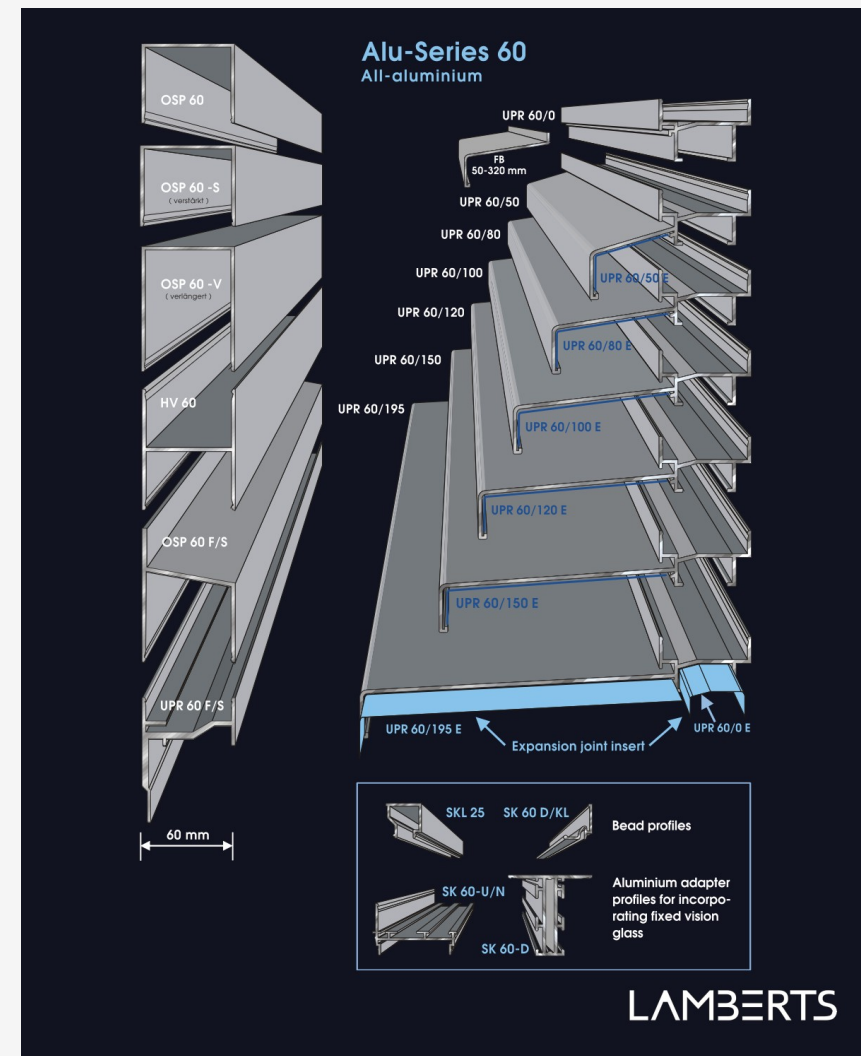


## FIXING SYSTEM

# Alu Series 60 — Non-Thermal

A 60 mm aluminium framing series for interior and weather-protected applications where thermal performance is not the primary driver. Slim profile depth with full LINIT™ system compatibility.

- 60 mm system depth
- Suitable for interior partitions and protected façades
- Mill, anodised, or RAL powder-coated finish
- Single-glazed LINIT™ installation

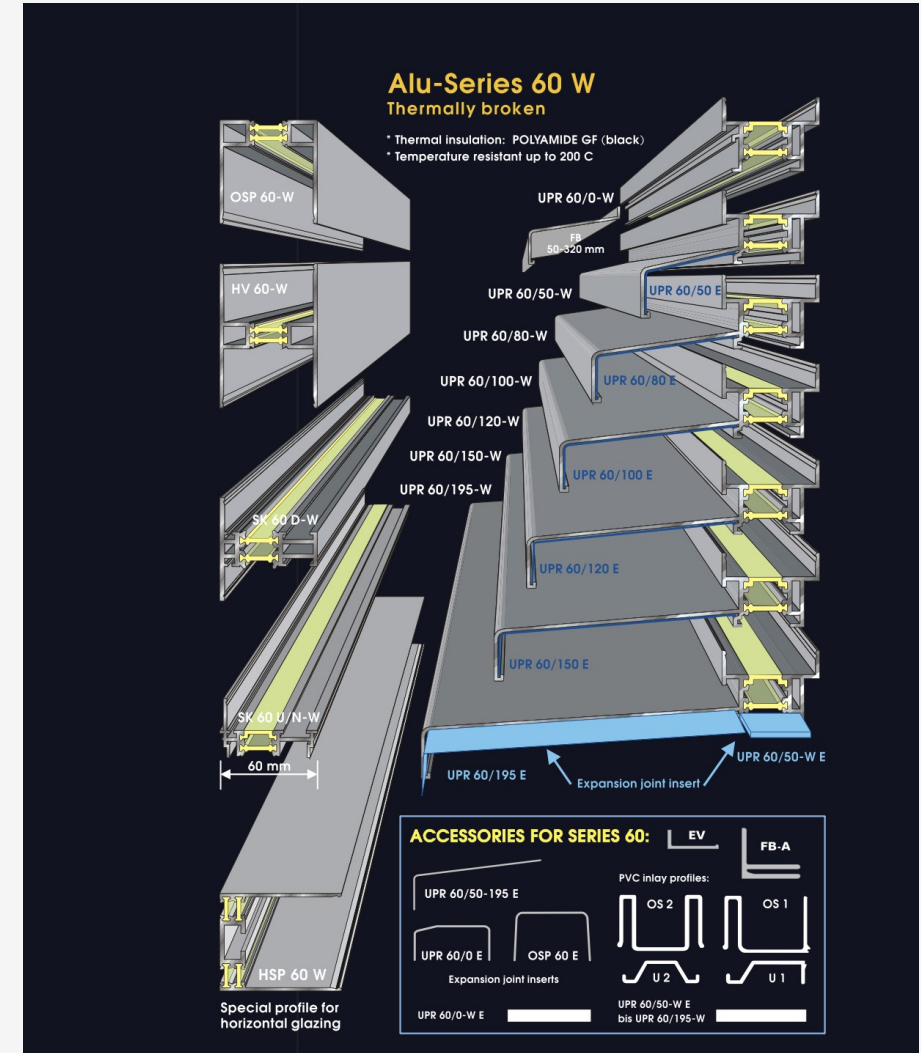


## FIXING SYSTEM

# Alu Series 60 — Thermally Broken

The same 60 mm depth with a polyamide thermal break separating internal and external aluminium. Designed for external façades where thermal performance and condensation control matter.

- 60 mm system depth with polyamide thermal break
- Improved U-value for exterior façades
- Pairs with LINIT™ Thermolight for twin-wall assemblies
- Mill, anodised, or RAL powder-coated

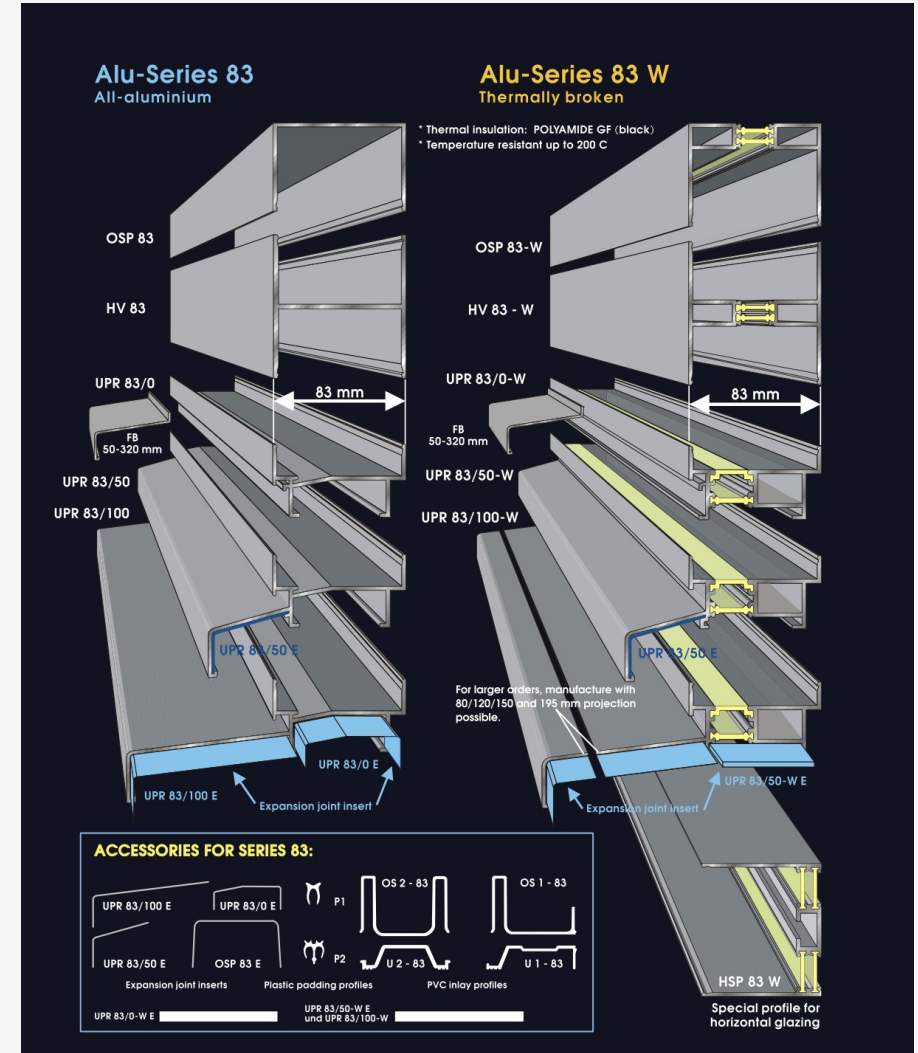


## FIXING SYSTEM

# Alu Series 83

An 83 mm depth aluminium system engineered for double-glazed LINIT™ assemblies and demanding structural conditions. Used where twin-wall channel glass meets large spans or high wind loads.

- 83 mm system depth
- Engineered for double-glazed twin-wall LINIT™
- High structural capacity for large spans
- Compatible with custom RAL finishes

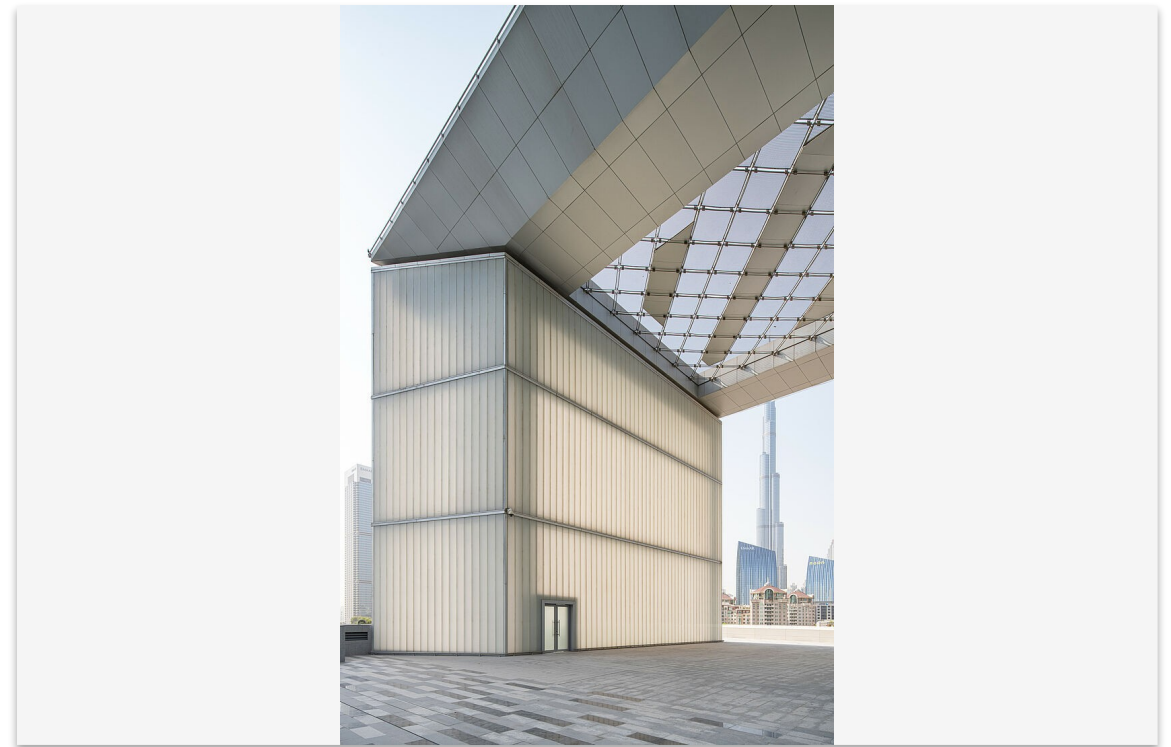
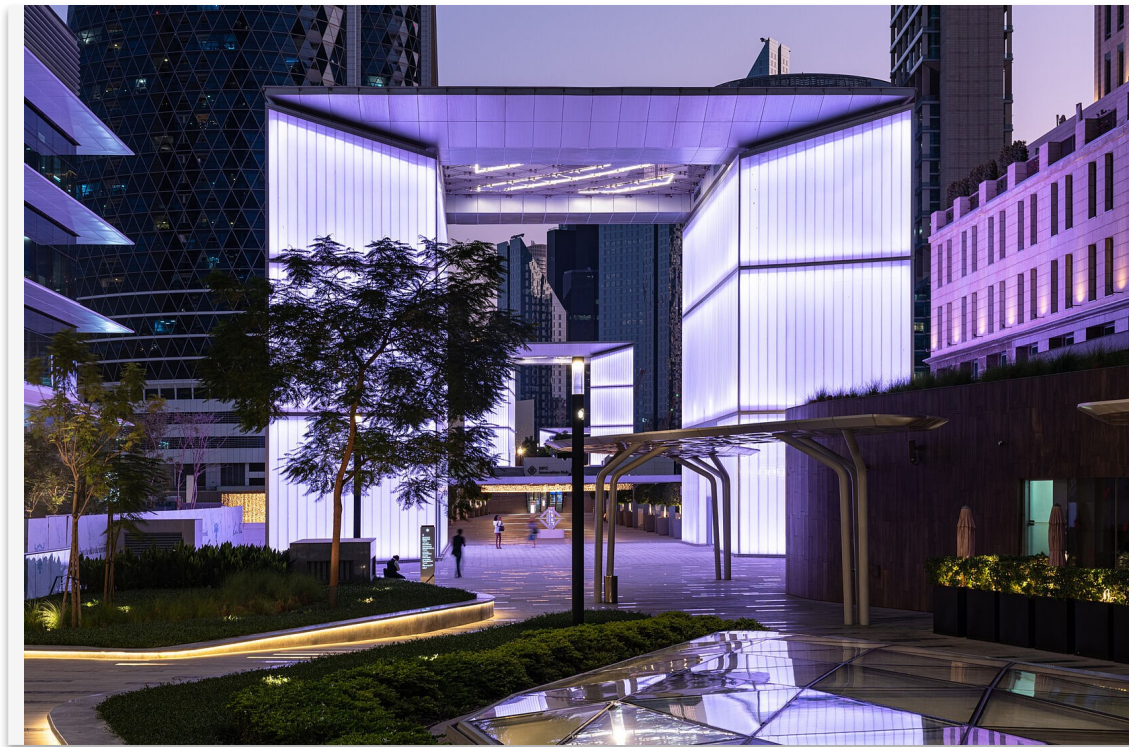


SECTION

# 05

# Project References

*U-Channel Glass installed across the GCC — retail, hospitality, healthcare, education, commercial.*



01 / REFERENCE PROJECT

# DIFC Gate Avenue

DUBAI — UNITED ARAB EMIRATES

CLIENT

DIFC

ARCHITECT

RMJM

GLASS

Cord P50/80/7, Low-Iron, L1 coating

An architectural feature within the DIFC Gate Avenue retail and dining boulevard. Cord profile in low-iron is backlit to create a luminous, dynamic edge through the evening — the low-iron content reduces the green tint of standard glass, producing a more neutral and sophisticated reading, while the L1 coating diffuses light evenly across the channel face.



02 / REFERENCE PROJECT

# College of Engineering and Petroleum

KUWAIT

CLIENT

Kuwait University

ARCHITECT

Cambridge Seven Associates / Gulf Consult

GLASS

504 P26/60/7, Clear, L1 coating

Lamberts LINIT™ deployed across eight buildings — over 40,000 m<sup>2</sup> of internal and external glazing. The 504 clear profile with L1 translucent coating produces a streamlined modern envelope; the diffusion softens daylight and reduces glare across teaching and research spaces.



03 / REFERENCE PROJECT

# Bluewaters Island

DUBAI — UNITED ARAB EMIRATES

CLIENT

Meraas

ARCHITECT

Woods Bagot

GLASS

Solar P26/60/7, Low-Iron, L1 coating

A striking architectural feature along the Bluewaters waterfront. Solar profile in low-iron with L1 coating delivers a vibrant, near-neutral transmission by day and a soft, ambient glow when backlit — making it a standout element within the masterplanned promenade.



04 / REFERENCE PROJECT

# Cleveland Clinic Abu Dhabi

ABU DHABI — UNITED ARAB EMIRATES

CLIENT  
Cleveland Clinic

ARCHITECT  
HDR

GLASS  
504 P26/60/7, Clear, L1 + Low-E + Aerogel

An innovative, energy-efficient façade running across the entire podium. External clear glass with L1 coating is paired internally with a Low-E coating and aerogel infill within the cavity — minimising heat transfer and dramatically improving thermal performance while preserving translucent daylight quality.



## 05 / REFERENCE PROJECT

## AGMC BMW Showroom — Motor City

DUBAI — UNITED ARAB EMIRATES

CLIENT

BMW AGMC

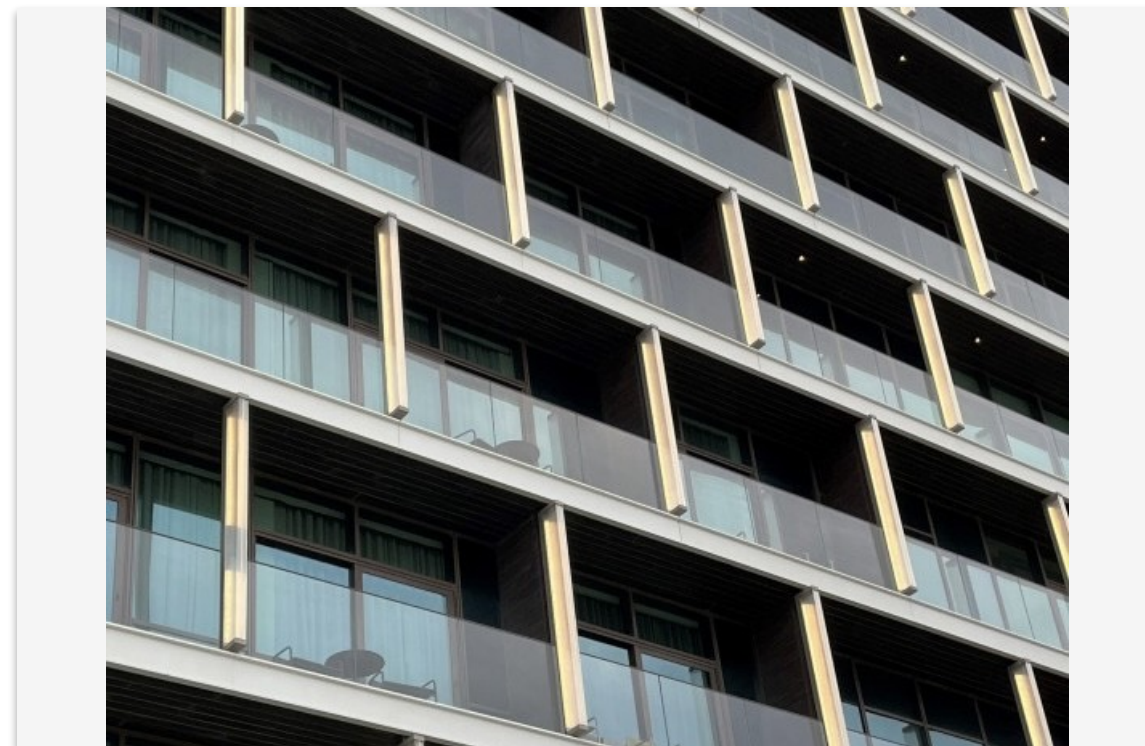
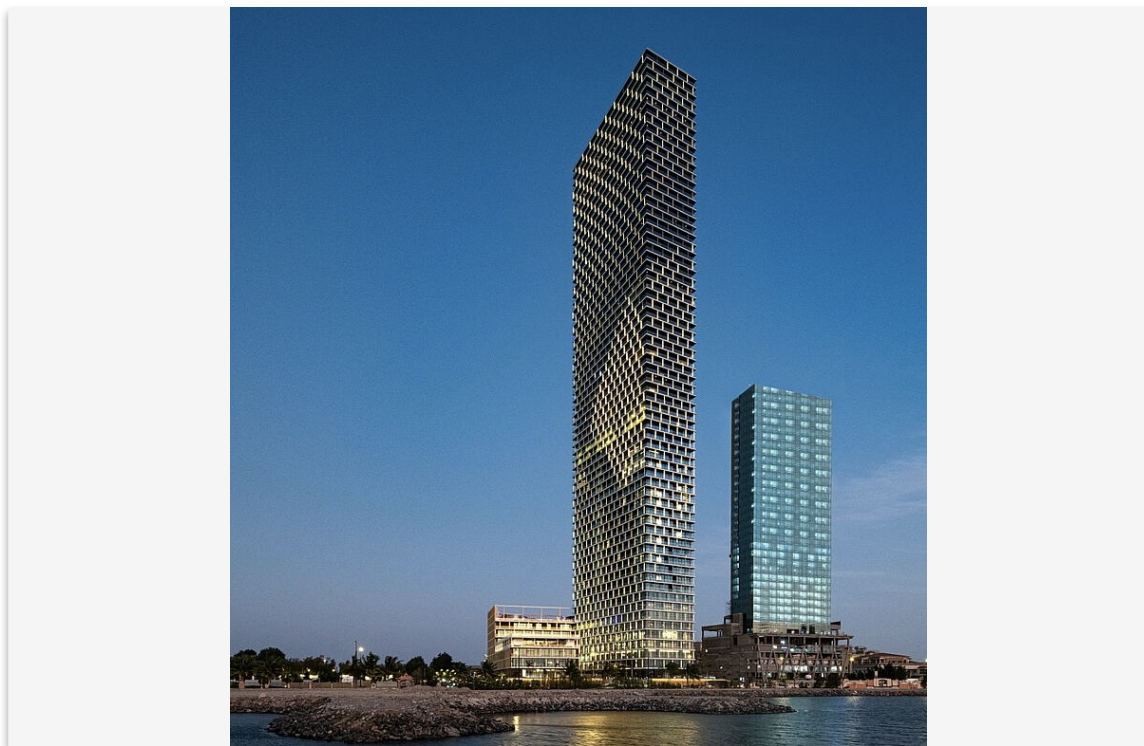
ARCHITECT

Archcorp

GLASS

504 P26/60/7, Clear, L1 + Low-E

Channel glass plays a pivotal role in the showroom's architectural identity. The 504 clear profile with L1 coating diffuses light cleanly by day; backlit from the interior at night, the façade transforms into a luminous display that draws attention to the premium BMW brand presence at Motor City.



06 / REFERENCE PROJECT

## Shangri-La Hotel — Jeddah Waterfront

JEDDAH — KINGDOM OF SAUDI ARABIA

CLIENT

Shangri-La Hotels

ARCHITECT

Perkins + Will

GLASS

Cord P26/60/7, Low-Iron, L1 coating

A unique application as a lighting element along the hotel façade. Cord profile is mounted flange-on-flange and protrudes from the structure, then backlit — generating a visually striking pattern that defines the building's nighttime presence along the Jeddah Waterfront.



## 07 / REFERENCE PROJECT

## Kuwait International Tennis Complex

KUWAIT CITY — KUWAIT

## CLIENT

Tamdeen Group

## ARCHITECT

CallisonRTKL

## GLASS

504 P26/80/7, Clear, L1 coating

Extensive use of LINIT™ across the venue. The U-shaped profile carries excellent load-bearing capacity and allows expansive, uninterrupted spans with minimal framing — delivering diffused daylight, energy efficiency, and improved acoustic performance across the spectator and event areas.



08 / REFERENCE PROJECT

# The Beach — JBR

DUBAI — UNITED ARAB EMIRATES

CLIENT

Dubai Properties

ARCHITECT

BSBG

GLASS

504 P26/60/7, L1 + Low-E variants

Across the retail and dining decks at The Beach, LINIT™ is specified to enhance the upscale waterfront environment. L1 coatings diffuse light softly; Low-E variants improve thermal performance — supporting a balance of privacy, daylight, and energy efficiency across the commercial spaces.



## 09 / REFERENCE PROJECT

## Adidas Flagship Store — Dubai Mall

DUBAI — UNITED ARAB EMIRATES

CLIENT

Adidas

ARCHITECT

Adidas

GLASS

Primasolar P26/60/7, Low-Iron, L1 coating

A distinctive luminous wall surface within the flagship retail environment. Primasolar in low-iron with L1 coating delivers high clarity and minimal green tint; backlit, it produces a radiant glow that supports the brand's high-energy, contemporary atmosphere.

SECTION

06

# Product Range

*Eight Lamberts LINIT™ profiles. Cast in Germany, supplied by KAPHS across the region.*

L A M B E R T S   L I N I T <sup>TM</sup>

# LINIT 504

*Standard cast U-profile — the workhorse of the range*

W I D T H

232 mm

F L A N G E

60 mm

T H I C K N E S S

7 mm

The reference LINIT<sup>TM</sup> profile: a standard cast U-profile with consistent diffusion and reliable structural performance. Suits the majority of single- and double-glazed channel glass applications. Available clear or sandblasted (504 S).



L A M B E R T S L I N I T <sup>TM</sup>

# LINIT Clarissimo

*Extra-clear low-iron profile with refined optics*

WIDTH

232 mm

FLANGE

60 mm

THICKNESS

7 mm

Clarissimo is the low-iron variant — the same cast geometry with reduced iron content for higher transmission and a neutral colour rendering. Specified where the soft cast diffusion of LINIT<sup>TM</sup> is desired alongside the cleanest possible glass tone.



L A M B E R T S   L I N I T <sup>TM</sup>

# LINIT Solar

*Light-redirecting profile for solar control*

W I D T H

232 mm

F L A N G E

60 mm

T H I C K N E S S

7 mm

Solar incorporates a geometric pattern that redirects incoming light, reducing direct solar gain without resorting to applied coatings. A purely architectural approach to shading — well suited to east- and west-facing façades.



L A M B E R T S L I N I T ™

# LINIT Cord

*Vertically-textured profile with linear diffusion*

WIDTH

232 mm

FLANGE

60 mm

THICKNESS

7 mm

Cord introduces a fine vertical ribbed texture across the channel face. The result is a directional, linear diffusion that emphasises verticality — a quiet but recognisable signature on lobby walls and exterior façades.



L A M B E R T S L I N I T <sup>TM</sup>

# LINIT PrismaSolar

*Prismatic profile combining diffusion and shading*

WIDTH

232 mm

FLANGE

60 mm

THICKNESS

7 mm

PrismaSolar fuses the structural performance of LINIT<sup>TM</sup> with a prismatic geometry that reflects and redirects sunlight. Solar control and daylight quality are tuned simultaneously, without compromising the cast glass character of the system.



L A M B E R T S L I N I T ™

# LINIT Ice

*Heavy textured cast profile, frozen surface character*

WIDTH

232 mm

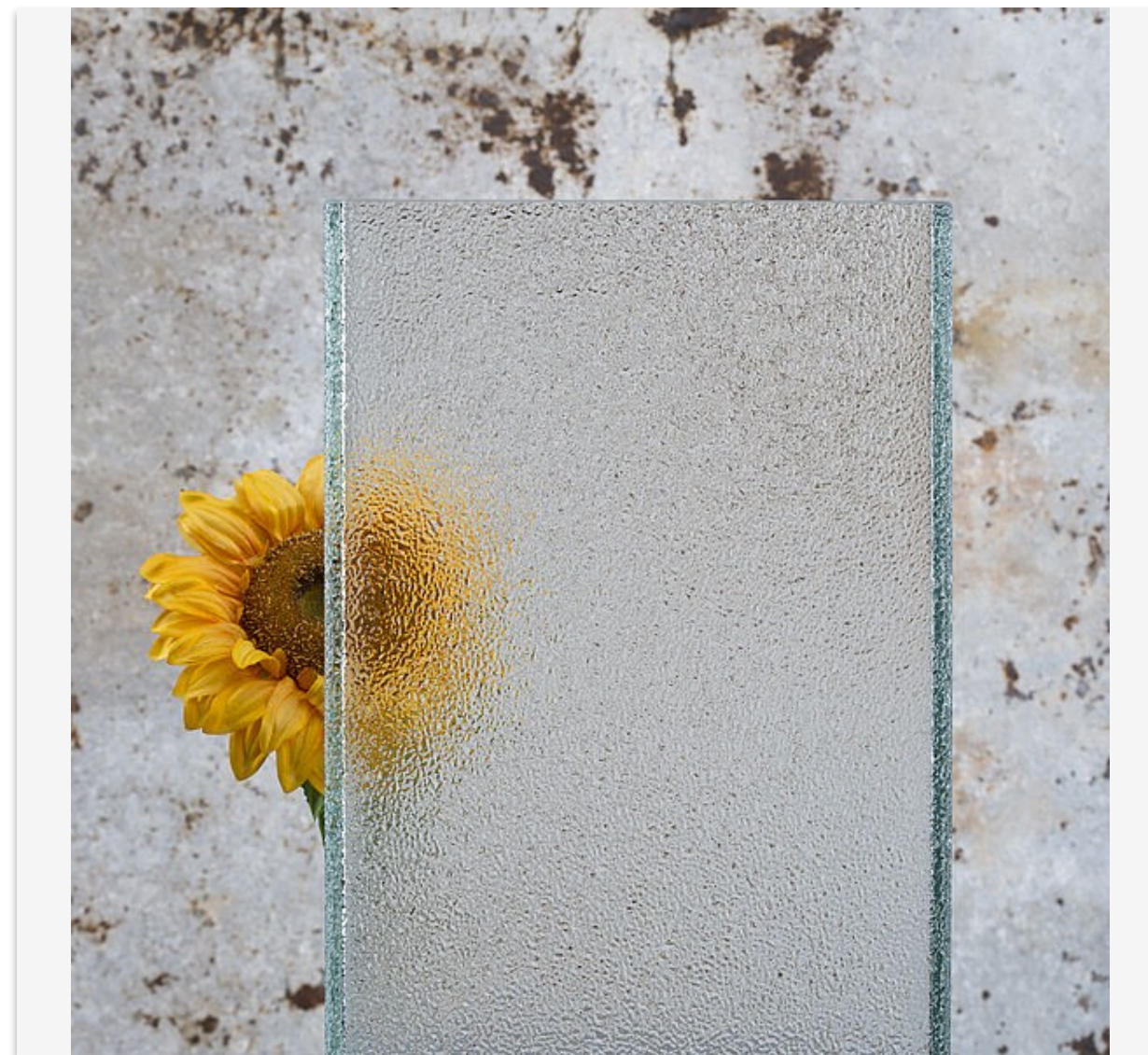
FLANGE

60 mm

THICKNESS

7 mm

Ice is a heavier surface texture across the cast face — a more pronounced visual rhythm than the standard 504 profile, with the same structural footprint. Used where designers want a more sculptural, glacial light quality.



L A M B E R T S L I N I T <sup>TM</sup>

# LINIT Magico

*Soft pattern profile, sculptural diffusion*

WIDTH

232 mm

FLANGE

60 mm

THICKNESS

7 mm

Magico introduces a softer, organic pattern across the cast face — light reads as a gentle field of variation rather than a uniform diffusion. Suited to feature walls, hospitality interiors, and partitions where atmosphere is the design intent.



L A M B E R T S L I N I T <sup>TM</sup>

# LINIT Moiré

*Interference-pattern profile, twin-wall ready*

WIDTH

232 mm

FLANGE

60 mm

THICKNESS

7 mm

Moiré is engineered to produce an interference pattern when installed as a twin-wall assembly. Two opposing channels generate a shifting visual signature — a distinctive façade reading that changes with viewing angle and time of day.



BUILT TO SPECIFICATION

# Specifications at a glance.

*U-Channel Glass is supplied across multiple profile widths, flange heights, and finishes, with custom configurations available on request.*

PROFILE WIDTHS	FLANGE HEIGHTS	GLASS THICKNESS	MAX LENGTH
232 mm	41 mm	6 mm	Up to 7 m
262 mm	60 mm	7 mm	(annealed / HS)
331 mm	80 mm		
498 mm			

GLAZING	FINISHES	FRAMES	FRAME FINISH
Single	Clear	Alu Series 60 (NT)	Mill
Double (Thermolight)	Low-iron	Alu Series 60 (TB)	Anodized
Vertical or horizontal	Sandblasted	Alu Series 83	RAL powder coat
	Ceramic frit		Custom RAL



GET IN TOUCH

# Let's specify your next façade.

OFFICE

KAPHS Middle East Building Materials Trading LLC  
Office 1701, Tower A, Prime Business Centre  
Jumeirah Village Circle, Dubai, UAE

CONTACT

+971 4 224 2225  
sales@kaphsgroup.com  
kaphsgroup.com