

The logo features a stylized red letter 'K' with a white outline and a grey orbital ring around it. To the right of the 'K' are the letters 'A', 'P', 'H', and 'S' in a black, serif font.

KAPHS

M E E T I N G E X P E C T A T I O N S

INDEX





INDEX

4. About KAPHS
5. Expanded Metal Mesh
6. Description
7. Product Range
8. Applications
9. Finishes
10. Fixing Systems
13. Project References
27. Mesh Range

ABOUT KAPHS

KAPHS is a Swiss Company founded in 2003 by Mr. Anil Sareen.

Our family-owned operation prides itself in specializing in the engineering, manufacturing and supply of high-end Metal & Glass products for Façade application as well as Interior Design purposes.

With a focus on the Middle-Eastern market and its requirements, **KAPHS** has built a diversified offering of Architectural Products in line with the region's evolving demands and technology.

Thanks to our extensive experience working with Architects, Interior Designers and Contractors, we aim to always offer our customers the most effective and appropriate solution to their needs.

KAPHS provides In-House Engineering throughout the life of a project until completion to ensure the utmost satisfaction to our clients.

Our trusted partnerships with European Manufacturers, whom we have represented for over two decades in the Middle-Eastern region has enabled us to accomplish a remarkable portfolio of landmark projects across the Gulf countries.

As a result of our local fabrication abilities, **KAPHS** offers ready-to-install material to support our customers.



EXPANDED METAL MESH



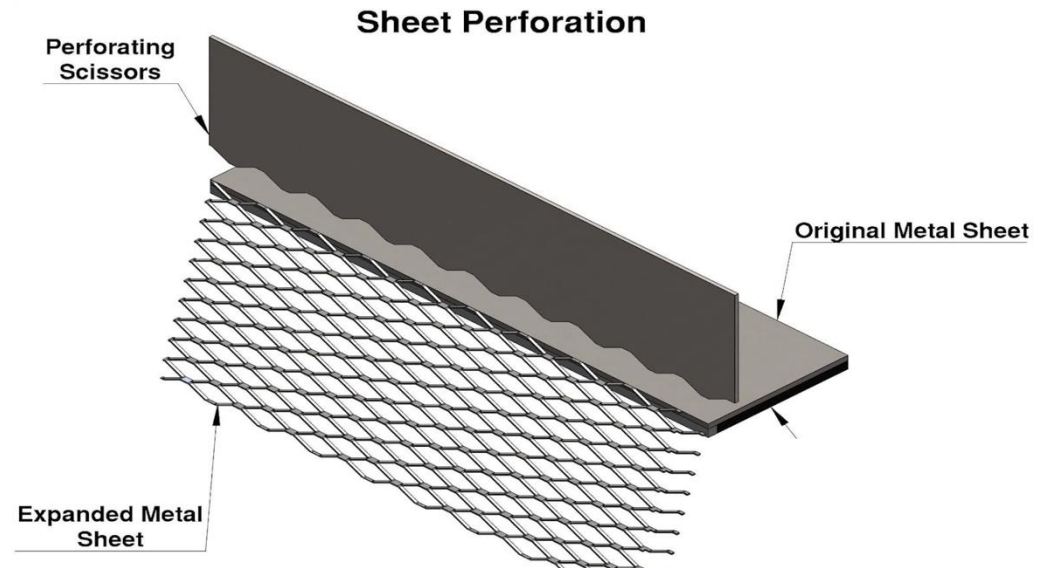


EXPANDED METAL MESH

Product Description

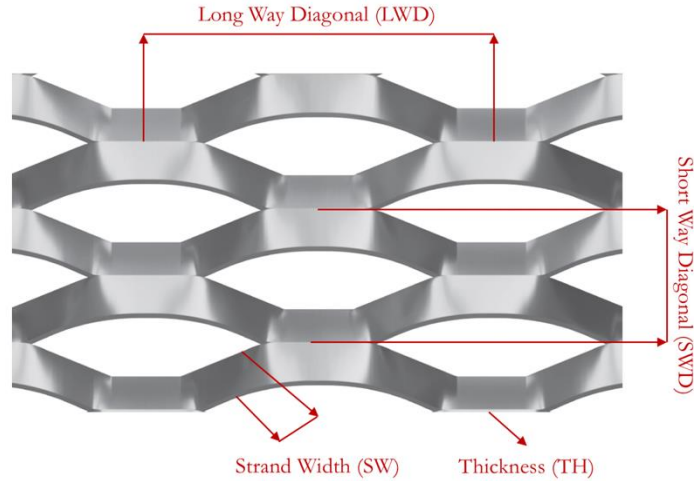
Expanded Metal Mesh is an innovative material that offers both structural integrity and aesthetic appeal, making it ideal for architectural applications. Created by slitting and stretching a metal sheet, this process produces a mesh with a distinctive shaped patterns that enhances the material's strength while maintaining a lightweight profile.

For architects, expanded metal mesh provides a versatile design element that can be tailored to various applications, including facades, sunshades, partitions, and decorative panels. Its open design allows for natural light and airflow, creating dynamic visual effects and improving energy efficiency within spaces.

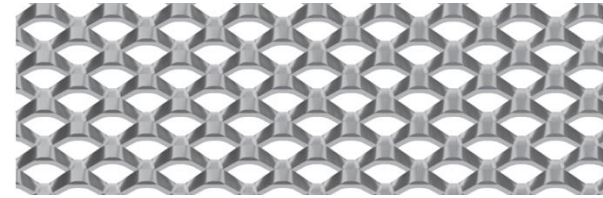


EXPANDED METAL MESH

Product Range



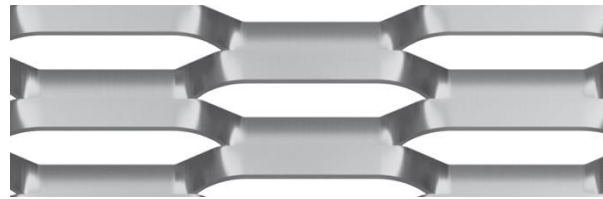
- 1. Strand Width:** The width of the strands can be adjusted to control the size of the openings. Wider strands result in smaller openings, while narrower strands create larger openings.
- 2. LW (Long Way Opening):** The LW dimension determines the length of the openings. Adjusting the LW can make the openings longer or shorter, depending on the specific needs.
- 3. SW (Short Way Opening):** The SWD dimension controls the width of the openings. A larger SWD increases transparency by creating wider openings.
- 4. Material Thickness:** Thinner material increases transparency as it allows more light to pass through the mesh. Conversely, thicker material reduces transparency.
- 5. Open Area Percentage:** The open area percentage can be customized by adjusting the strand width and SW/LW dimensions. A higher open area percentage increases transparency and ventilation.



Small Mesh



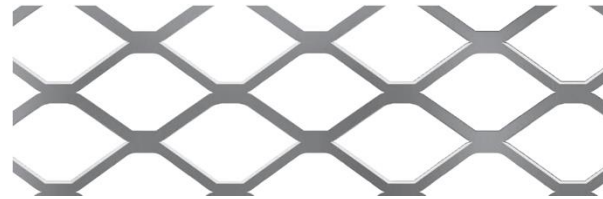
Hexagonal Mesh



Longbond Mesh



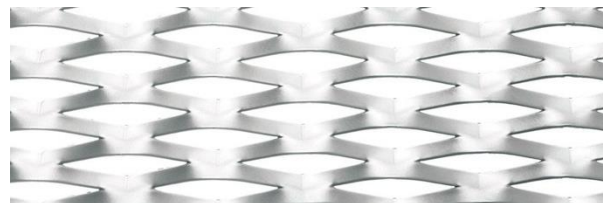
Arrow Mesh



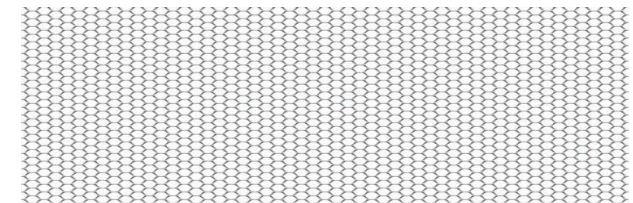
Square Mesh



Diamond Mesh



Round Mesh



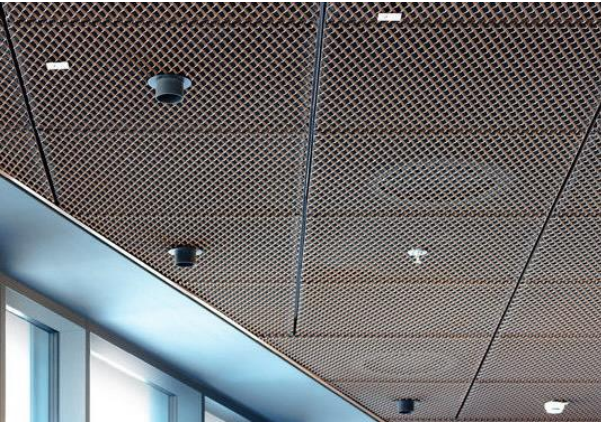
Honeycomb Mesh



EXPANDED METAL MESH

Applications

Expanded Metal Mesh is a highly versatile material used across a wide range of architectural applications due to its unique combination of strength, durability, and aesthetic appeal.



-Facades: Expanded metal mesh is widely used in building facades and cladding to create visually striking exteriors. Its open design allows for dynamic light and shadow effects while providing ventilation and protection against the elements

-Canopies: The material is ideal for canopies, offering excellent control over natural light and reducing solar heat gain in buildings. The mesh can be designed to allow just the right amount of sunlight to filter through, contributing to energy efficiency.

-Interior Partitions and Ceilings: Inside buildings, expanded metal mesh is often used to create partitions, ceilings, and decorative panels. Its ability to allow light and air to pass through makes it perfect for creating open, breathable spaces without sacrificing privacy or sound control.

-MEP Cladding: The strength and durability of expanded metal mesh make it suitable to conceal MEP areas while allowing necessary ventilations. It offers a modern, industrial look while ensuring safety and stability.



EXPANDED METAL MESH

Finishes

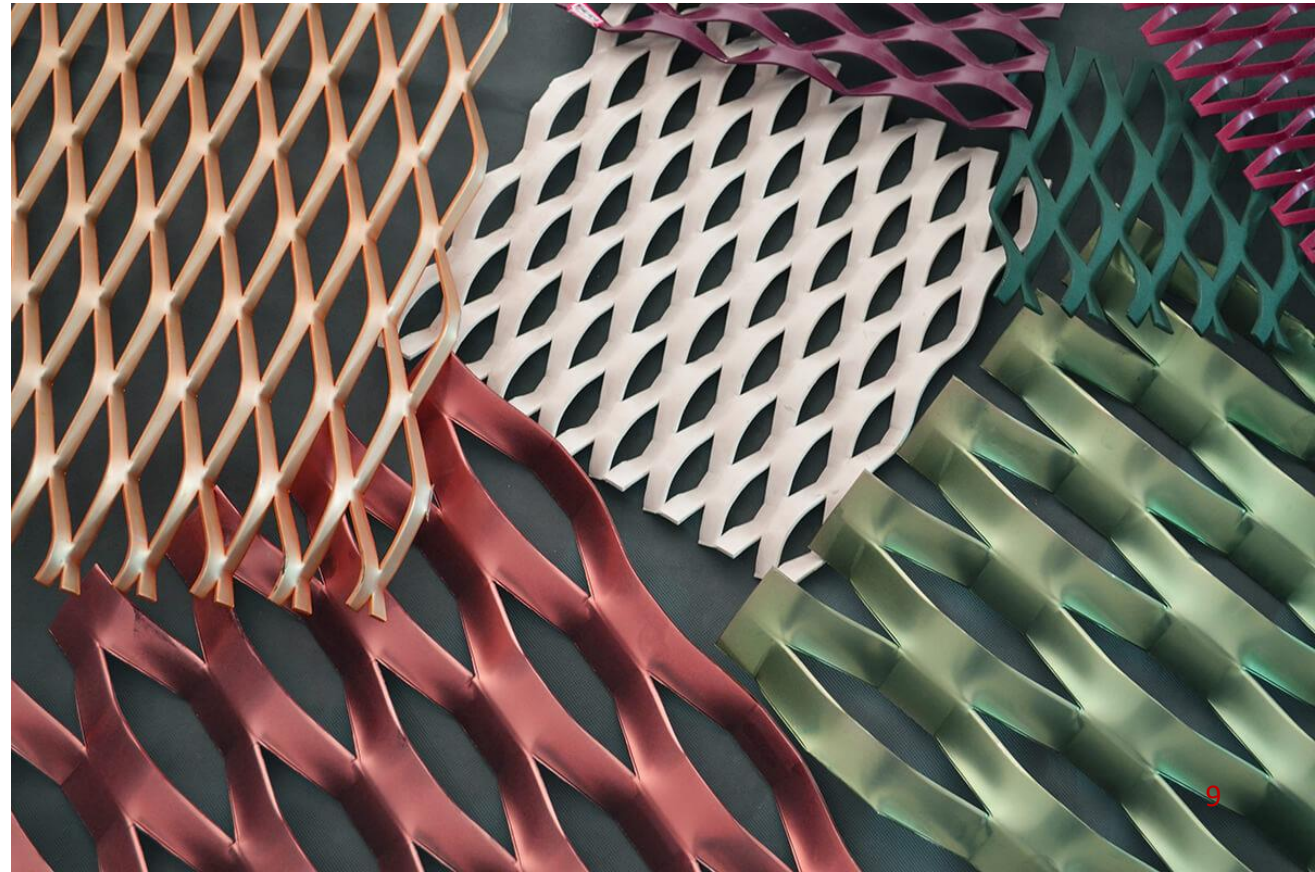
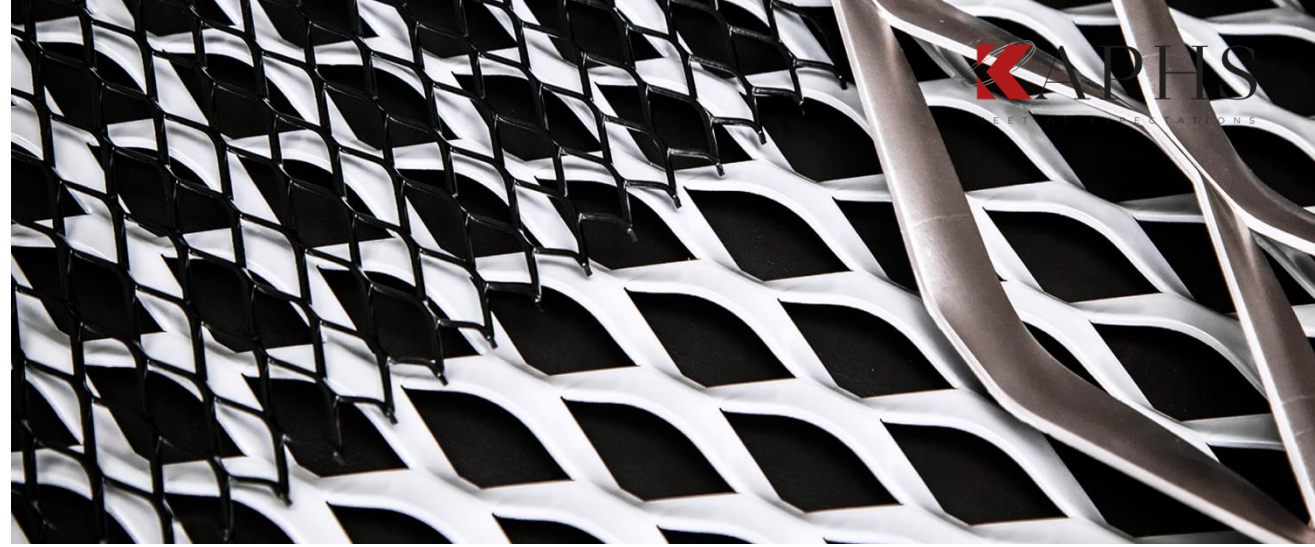
Expanded Metal Mesh can be finished with a variety of coatings and treatments to enhance both its durability and aesthetic appeal.

-Mill Finish: A mill finish refers to the natural, uncoated state of the metal after it has been processed. This raw finish is often used for applications where the mesh will be further fabricated or where a rustic, industrial appearance is desired. It provides no additional corrosion protection, so it's typically used indoors or in low-exposure environments.

-Powder Coating: Powder coating involves applying a dry powder to the mesh, which is then cured under heat to form a protective layer. This finish is available in a wide spectrum of colors and offers excellent protection against corrosion, UV rays, and scratches. It's particularly popular for architectural applications where color and surface durability are important.

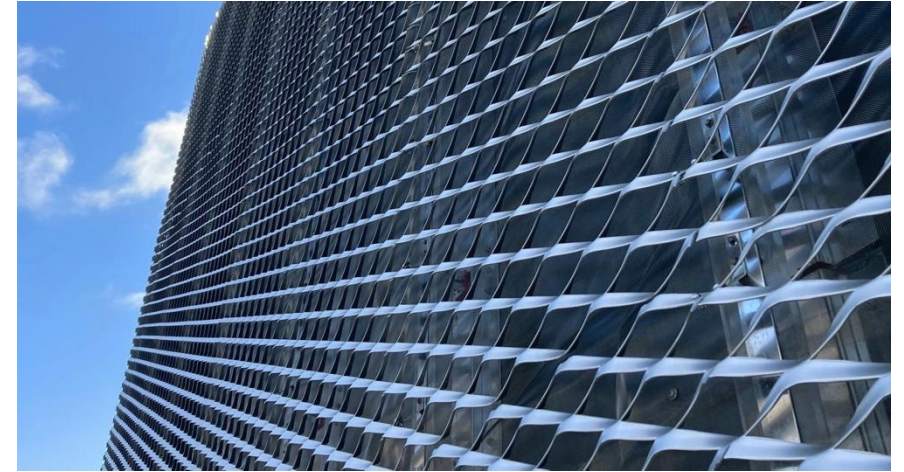
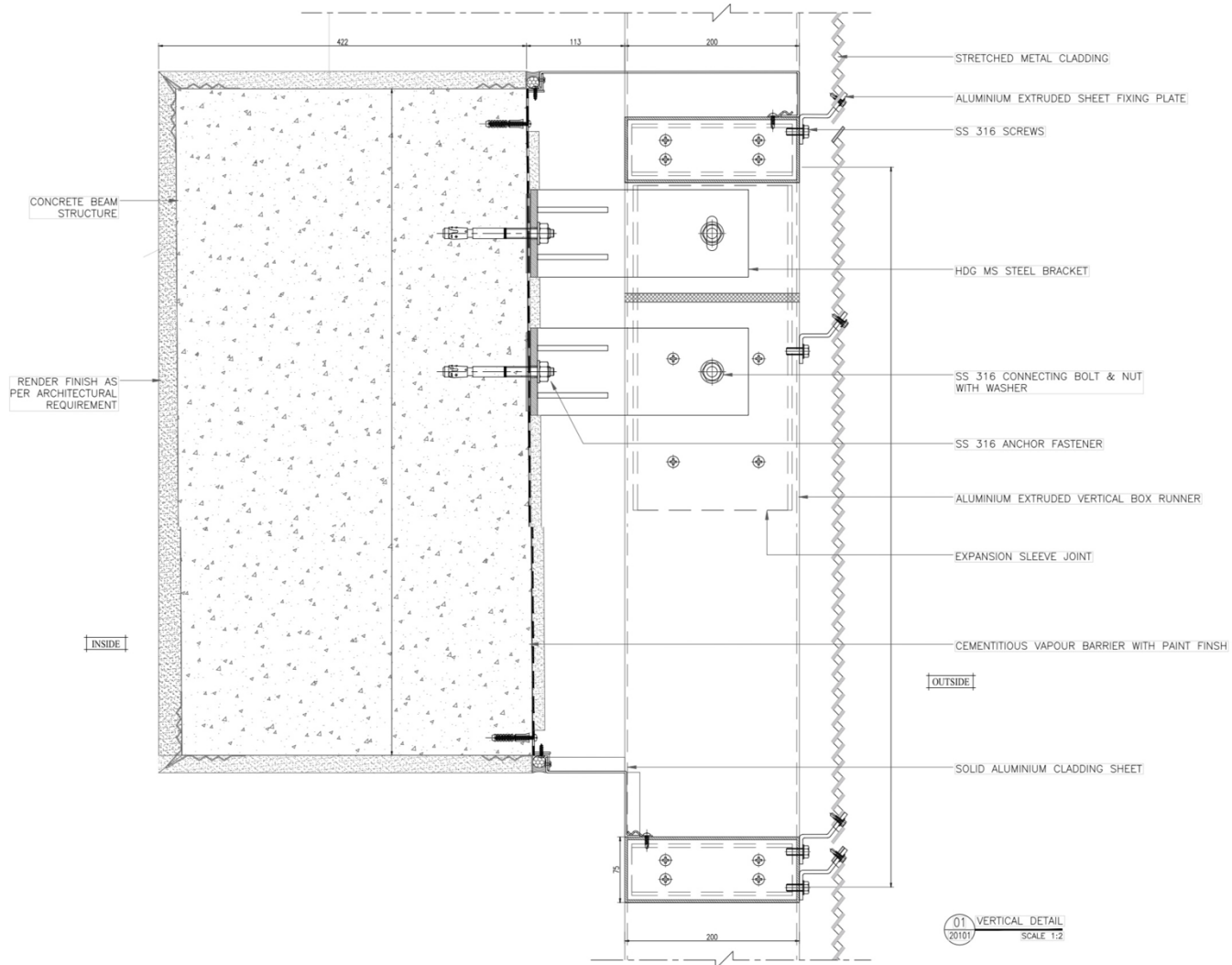
-Anodizing: Anodizing is a process used primarily for aluminum mesh, where an electrochemical process thickens the natural oxide layer on the surface. This results in a durable, corrosion-resistant finish that also enhances the material's appearance by adding a rich metallic sheen. Anodized finishes are ideal for outdoor applications and areas exposed to harsh environments.

-Galvanization: Galvanization involves coating the mesh with a layer of zinc to protect against rust and corrosion. This finish is commonly used for steel mesh and is ideal for exterior applications where weather resistance is crucial. It offers a more rugged, industrial look while ensuring long-term durability.



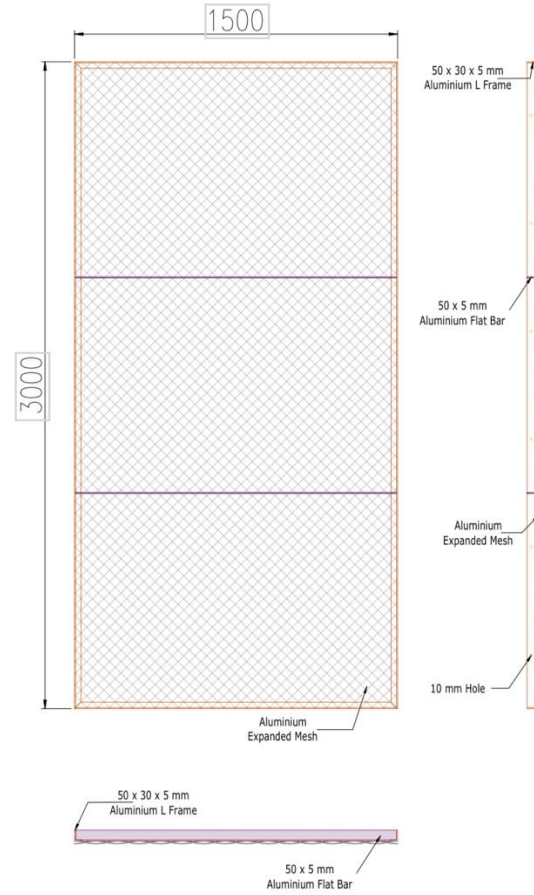
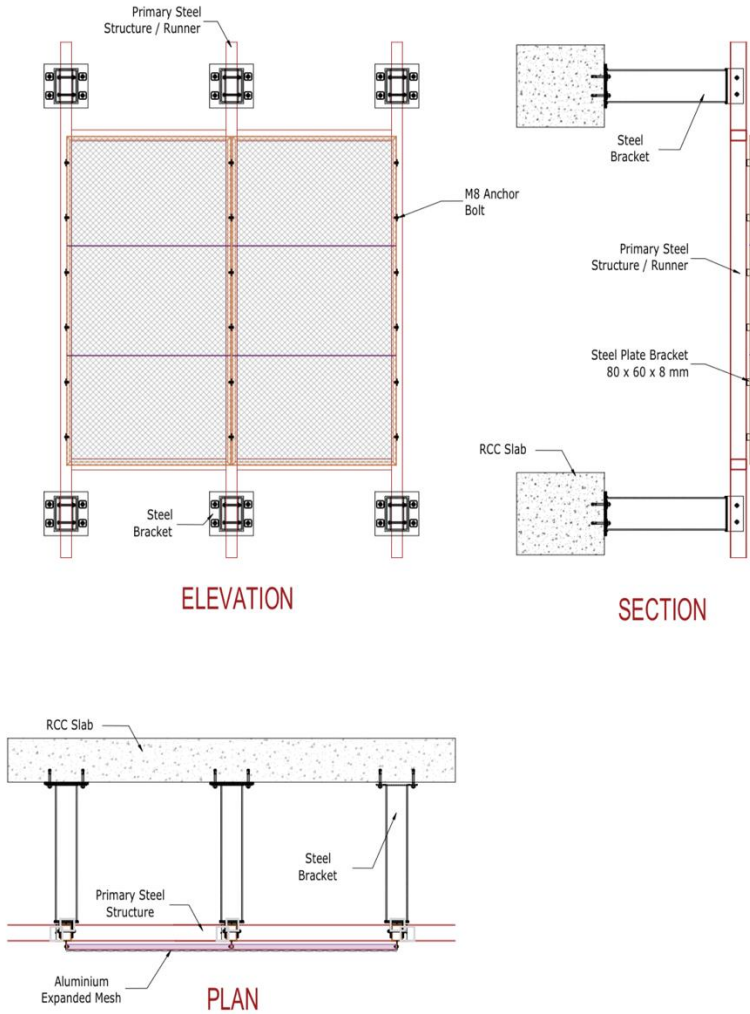
EXPANDED METAL MESH

Frameless Bracket Fixing System



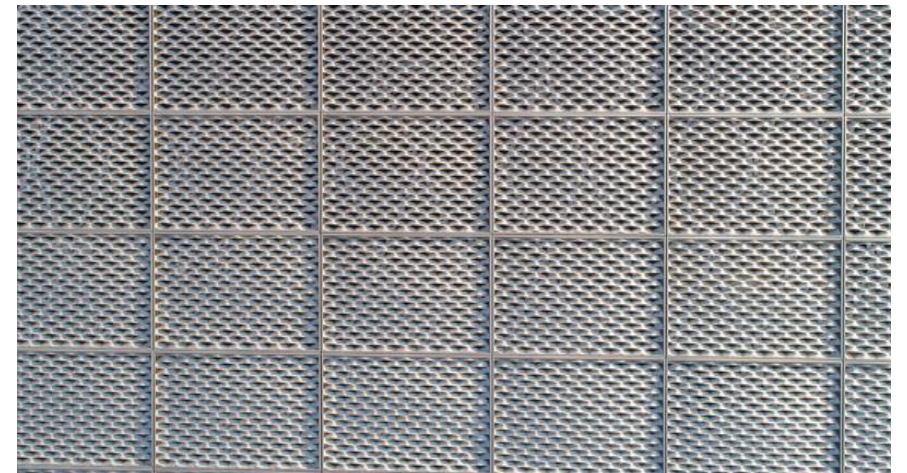
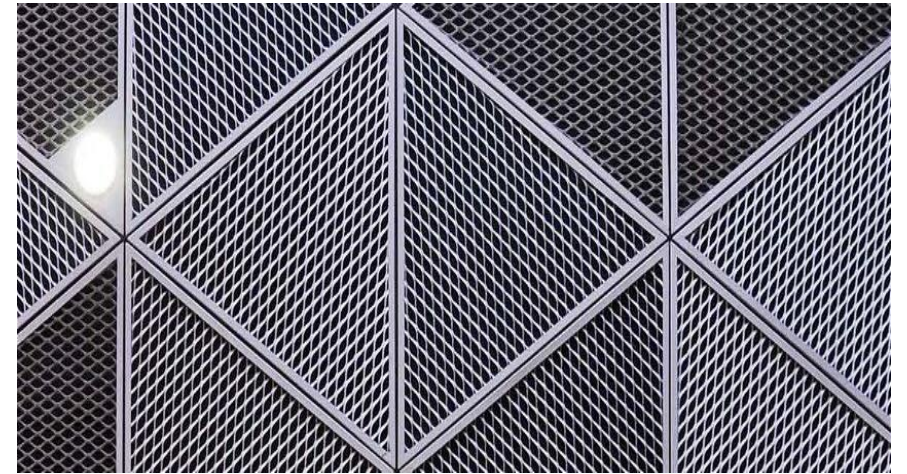
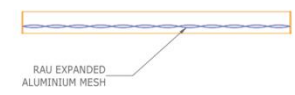
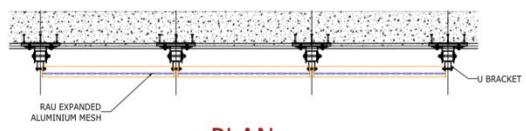
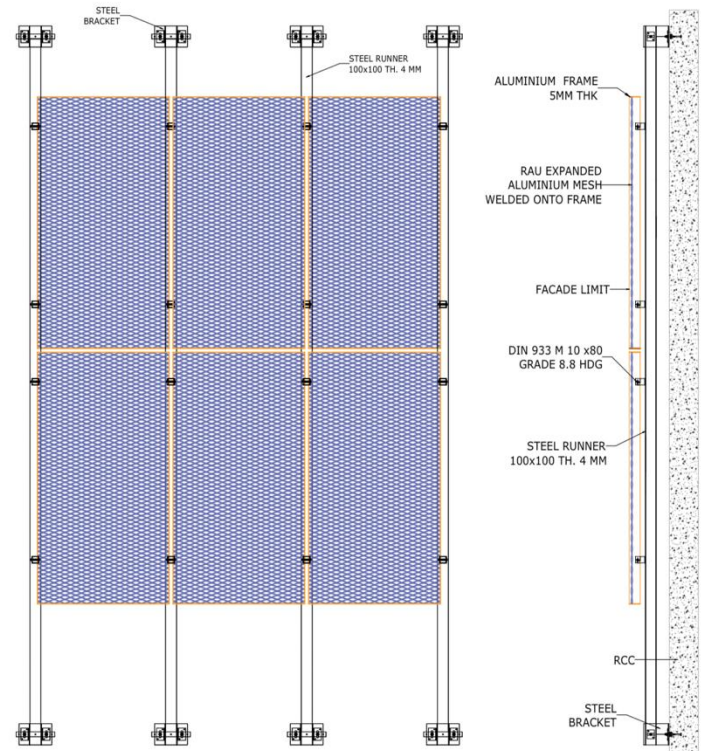
EXPANDED METAL MESH

L-Profile Frame Fixing System



EXPANDED METAL MESH

Box Frame Fixing System



Silicon Central Mall

Lulu Silicon Central Mall, situated in Silicon Oasis, Dubai, stands as a major retail and lifestyle hub in the region.

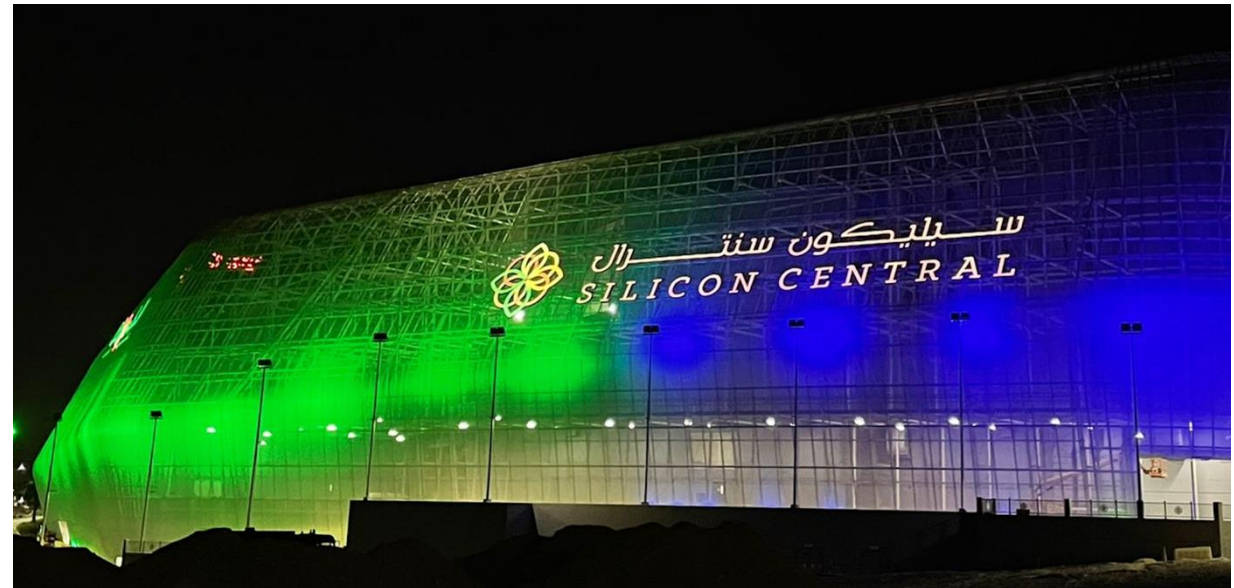
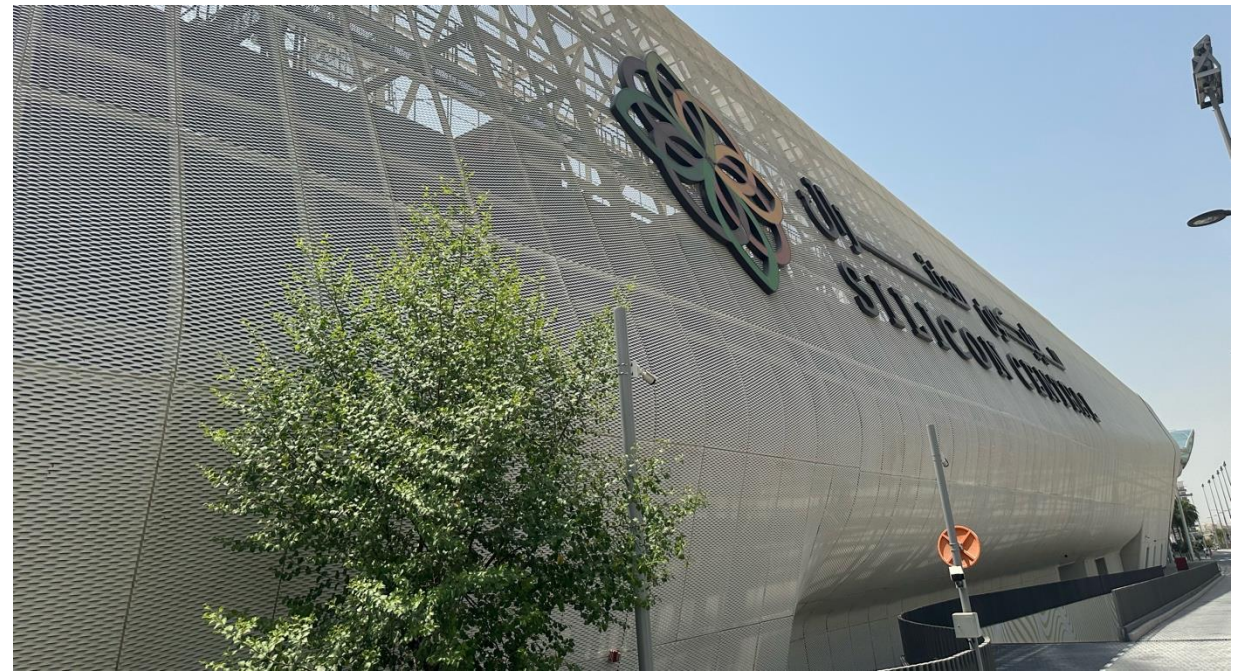
The mall's modern architectural design is highlighted by the use of 150mm hexagonal expanded metal mesh on its entire facade, installed using a frameless bracket fixing system. This design element not only enhances the mall's contemporary appearance but also provides functional benefits like improved ventilation and light diffusion. The frameless system contributes to a sleek, seamless look, aligning with the mall's cutting-edge aesthetic.

Location: Silicon Oasis, Dubai - UAE

Client: Lulu Group International

Architect: Design International







Sea World Abu Dhabi

The 100mm hexagonal expanded metal mesh, supplied by KAPHS, is utilized for all the staircases surrounding Sea World in Abu Dhabi. This distinctive mesh design adds a modern, geometric aesthetic to the staircases, seamlessly blending with the futuristic architecture of the Sea World complex.

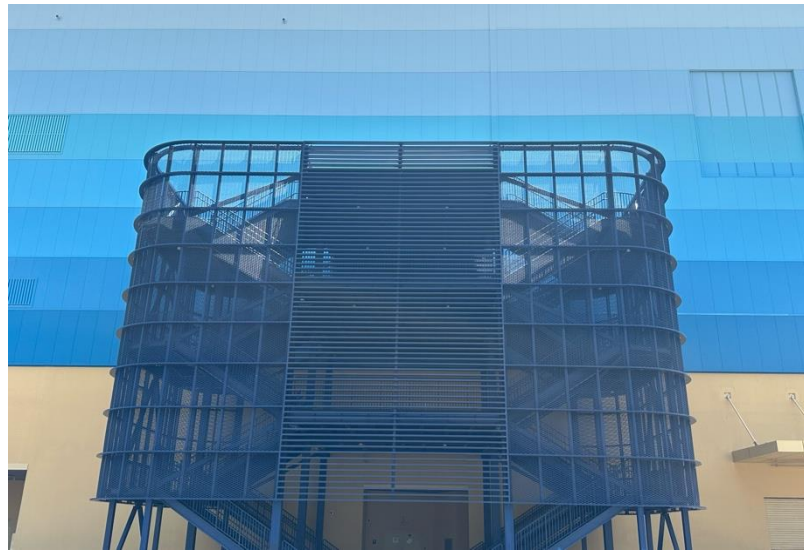
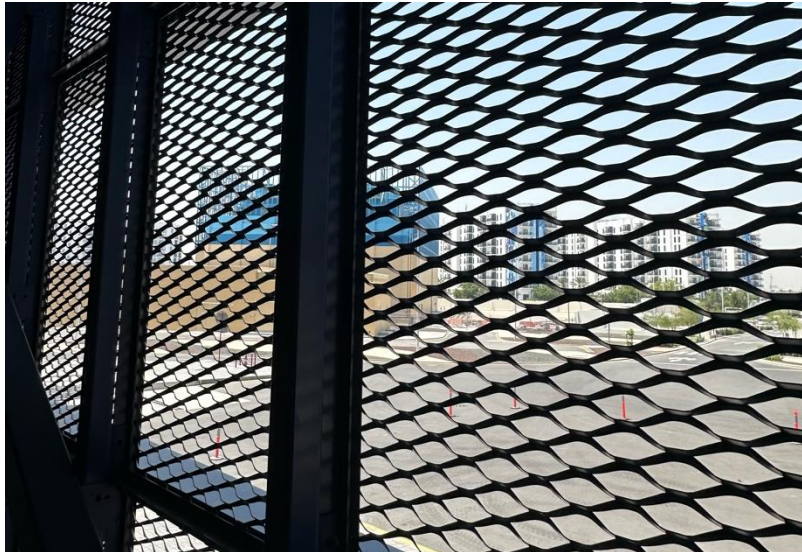
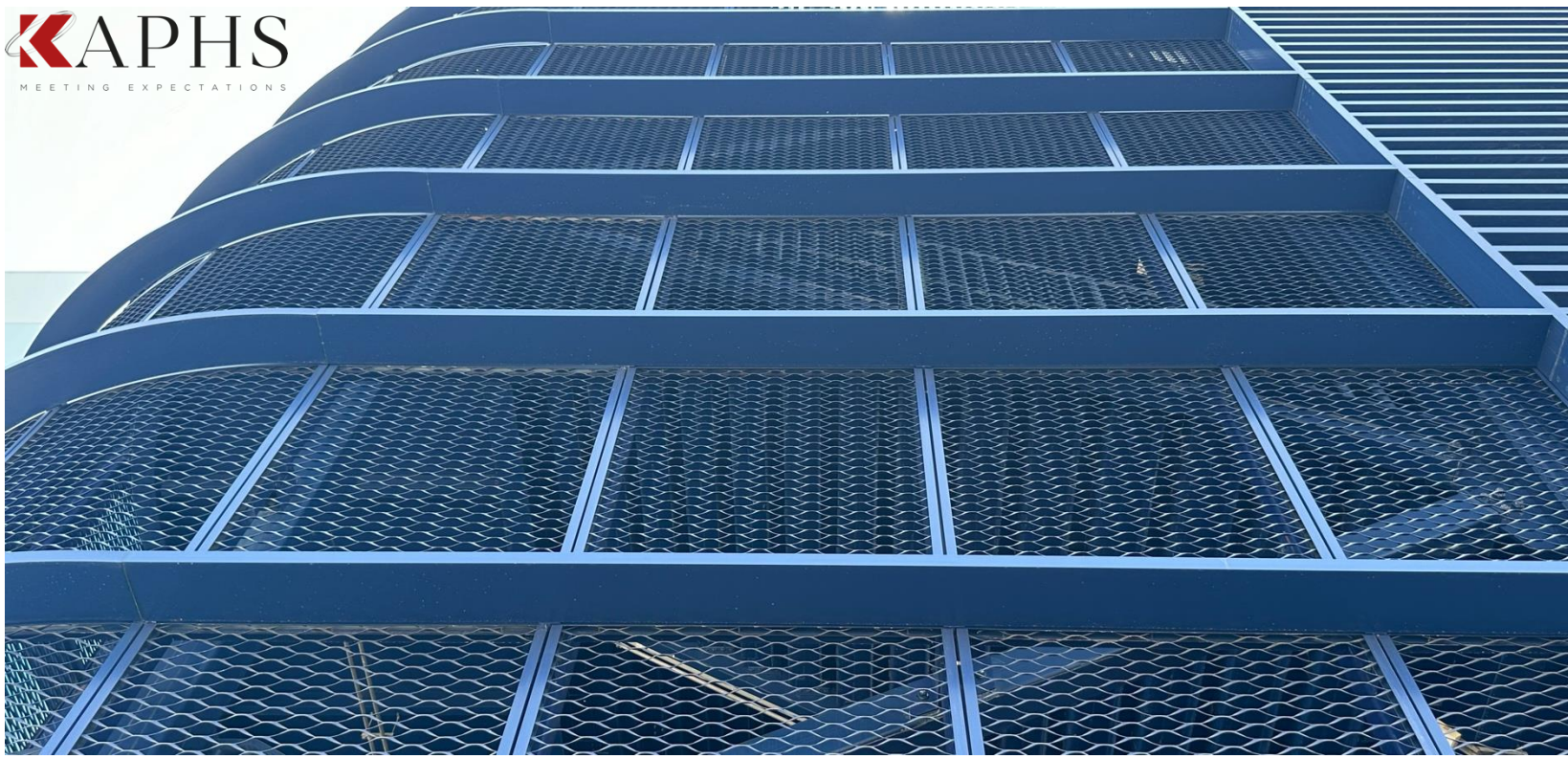
The hexagonal pattern not only enhances the visual appeal but also provides structural benefits, including increased durability and strength. As a functional feature, the expanded metal mesh offers fall prevention safety.

Additionally, it allows for natural light to filter through, creating a visually engaging and well-lit environment around the staircases. The choice of this material contributes to both the aesthetic and practical aspects of the Sea World project, ensuring long-lasting performance in a high-traffic area.

Location: Abu Dhabi - UAE

Client: Miral

Architect: Faithful + Gould





Dubai Mall Zabeel Expansion

The Dubai Mall Zabeel Expansion features a visually captivating use of 400mm diamond pattern expanded metal mesh as the backdrop for its signage. This architectural mesh, supplied by KAPHS, combines aesthetic sophistication with practical benefits, making it an ideal choice for the high-profile setting.

The 400mm diamond pattern expanded metal mesh is characterized by its large, geometric apertures, which create a dynamic and modern backdrop that enhances the visibility and prominence of the signage. The mesh's unique diamond design adds depth and texture, drawing attention and complementing the contemporary architecture of the Dubai Mall Zabeel Expansion.

Functionally, the expanded metal mesh provides excellent durability and weather resistance, essential for external applications in Dubai's harsh climate. The open design allows for natural ventilation and light penetration, preventing heat buildup and reducing energy consumption for lighting. Additionally, the mesh's robust construction ensures long-lasting performance with minimal maintenance, making it a practical solution for busy commercial environments.

Location: Dubai - UAE

Client: Emaar

Architect: BSBG

Marina Gate Tower 3

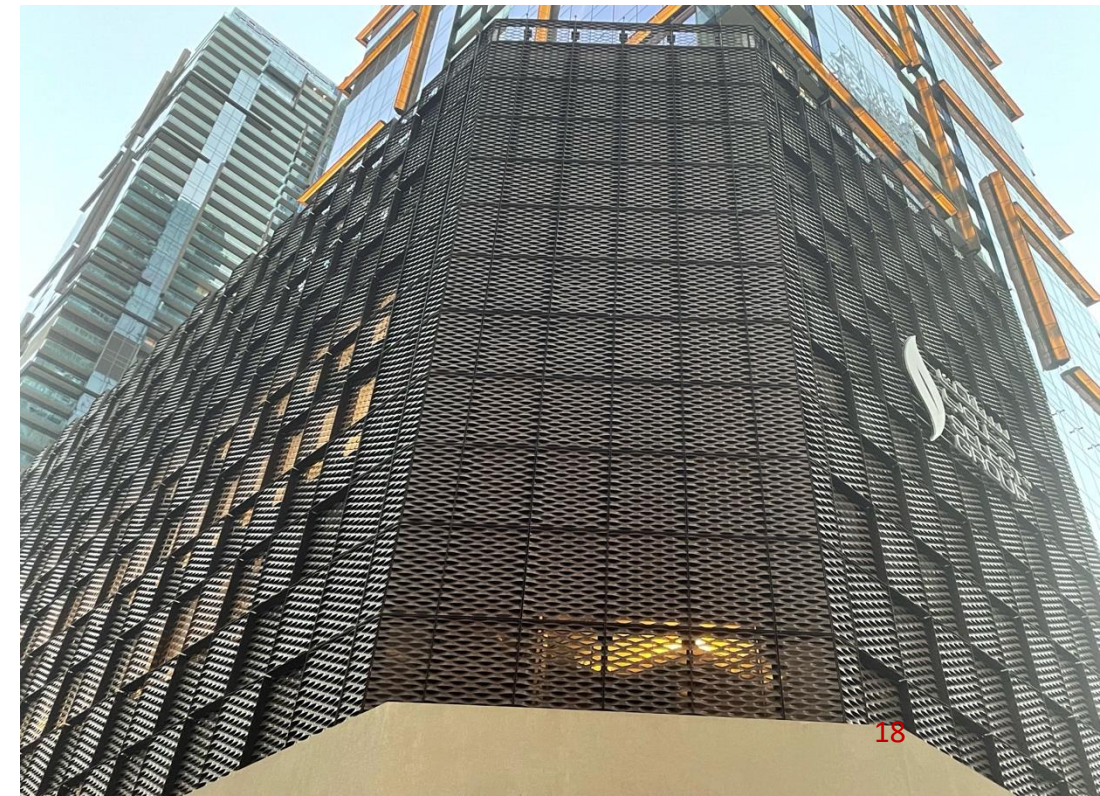
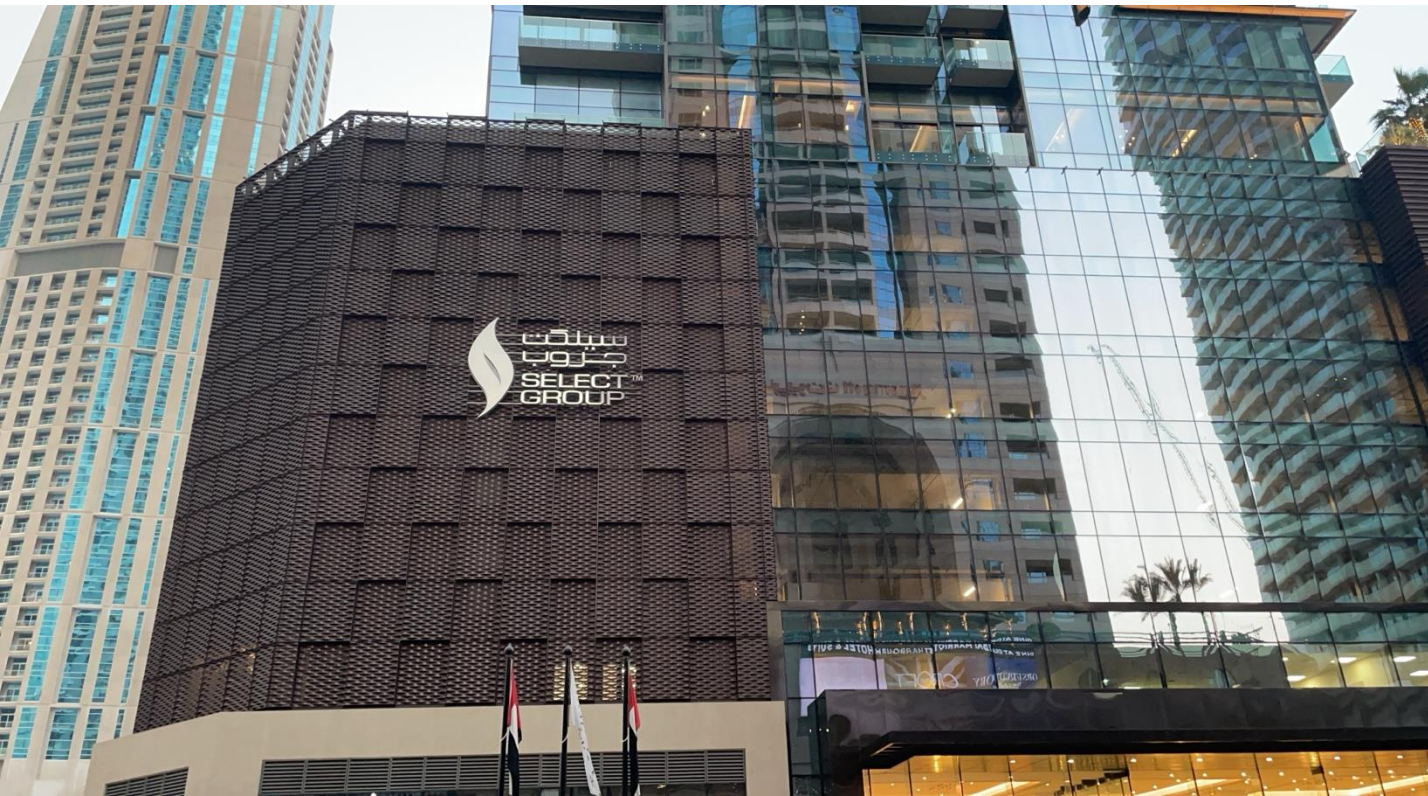
Marina Gate Tower 3 in Dubai features an innovative car park cladding design utilizing 400mm round expanded metal mesh.

A unique aspect of this installation is the play in depth created by the varying attachment points of the mesh panels. On one panel, the mesh is welded on the interior of the frame, while on the adjacent panel, it is welded on the exterior.

Location: Marina, Dubai - UAE

Client: Select Group

Architect: Aedas





Mercedes-Benz Showroom

The 150mm hexagonal expanded metal mesh, supplied by KAPHS for the Mercedes-Benz Showroom in Pyramid Heights, Egypt, serves as a striking double skin for the curtain wall. This unique hexagonal pattern not only enhances the architectural aesthetics of the showroom but also complements the luxury and modernity of the Mercedes-Benz brand. As a double skin, the mesh provides effective thermal insulation and reduces solar heat gain, improving the building's energy efficiency. It also offers protection from environmental elements while allowing natural light to penetrate, creating a visually captivating play of light and shadow.

Location: Cairo - Egypt

Client: Mercedes-Benz

Architect: Ratsnorb



DIFC Gate Avenue

The DIFC Car Park in Dubai features an impressive external wall cladding design utilizing 200mm round expanded metal mesh. This architectural mesh, supplied by KAPHS, is chosen for its combination of aesthetic appeal, durability, and functional benefits.

The 200mm round pattern expanded metal mesh presents a bold and modern look with its large rounded apertures, creating a visually striking facade that stands out in the urban landscape. This design not only enhances the building's contemporary aesthetic but also provides a unique texture and depth to the car park's exterior.

The robustness and durability expanded metal mesh make it an ideal material for external cladding. It withstands environmental factors such as wind, rain, and sunlight, ensuring long-lasting performance with minimal maintenance.

Location: Dubai - UAE

Client: DIFC

Architect: RMJM





Mercedes-Benz Ezz Al Arab Star

The 100mm diamond pattern expanded metal mesh, supplied by KAPHS, is used as a double skin for the curtain wall of the Mercedes-Benz Ezz Al Arab Star Showroom, providing both functional and aesthetic benefits.

The mesh creates a dynamic facade with a geometric, diamond-shaped pattern that enhances the building's visual appeal and aligns with the luxury branding of Mercedes-Benz. Structurally, the expanded metal acts as a secondary layer that improves thermal insulation and reduces solar heat gain, contributing to energy efficiency.

Location: Giza - Egypt

Client: Ezz Al Arab Automotive Group

Architect: Ratsnorb

Tiara United Towers

The 62mm diamond pattern expanded metal mesh, supplied by KAPHS, is used for the car parks of Tiara United Towers in Dubai. Due to its small opening size, the mesh creates an appearance similar to bird mesh from a distance, rather than traditional cladding.

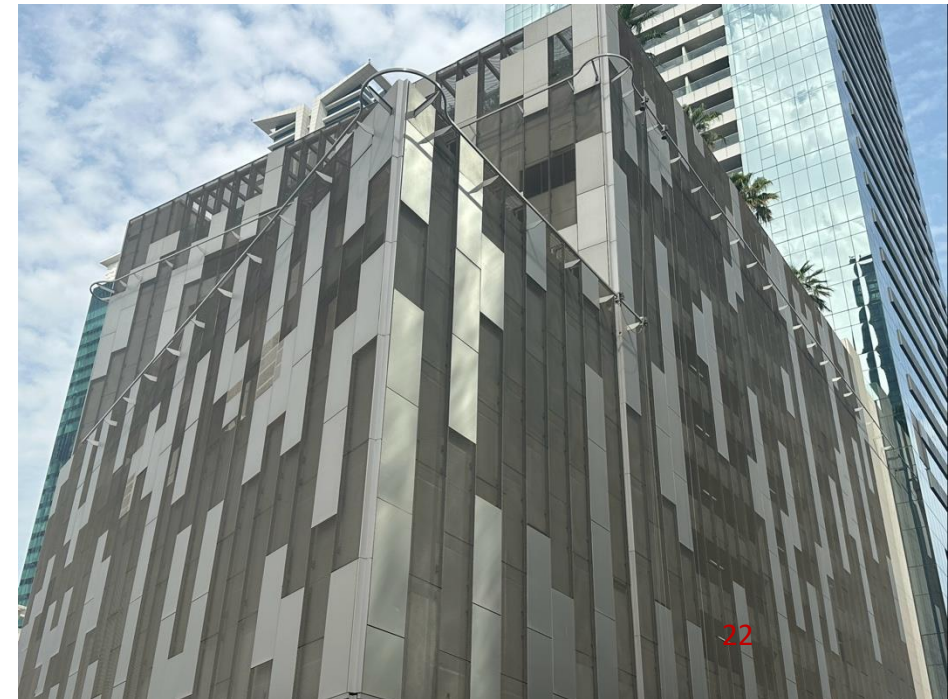
This subtle design choice enhances the visual interest of the car parks while providing functional benefits such as ventilation and protection.

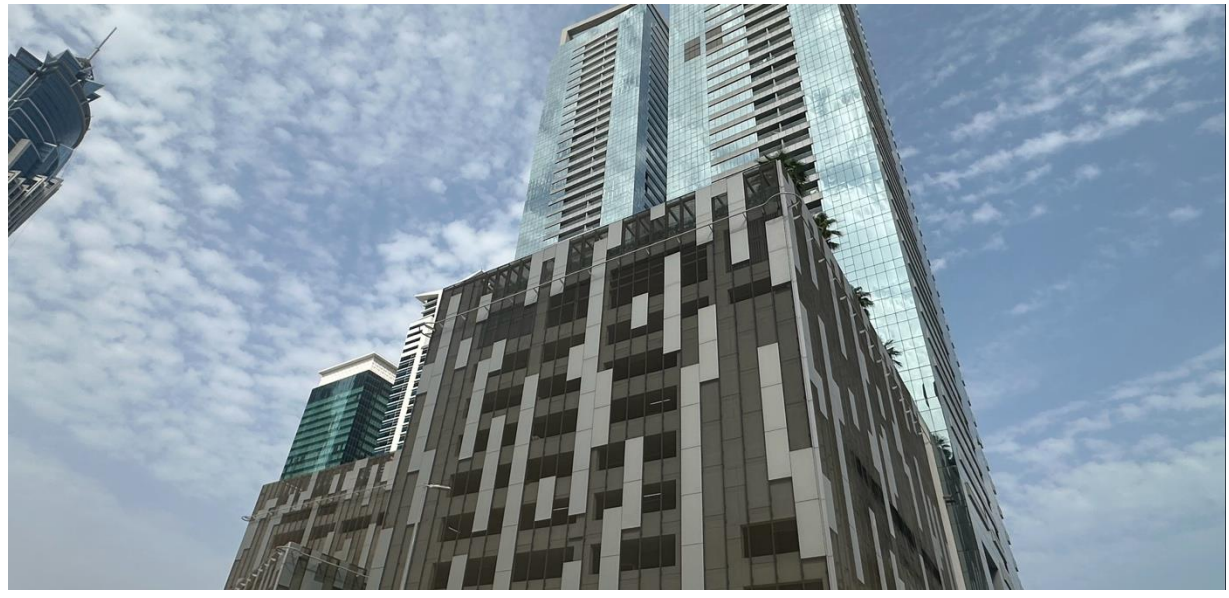
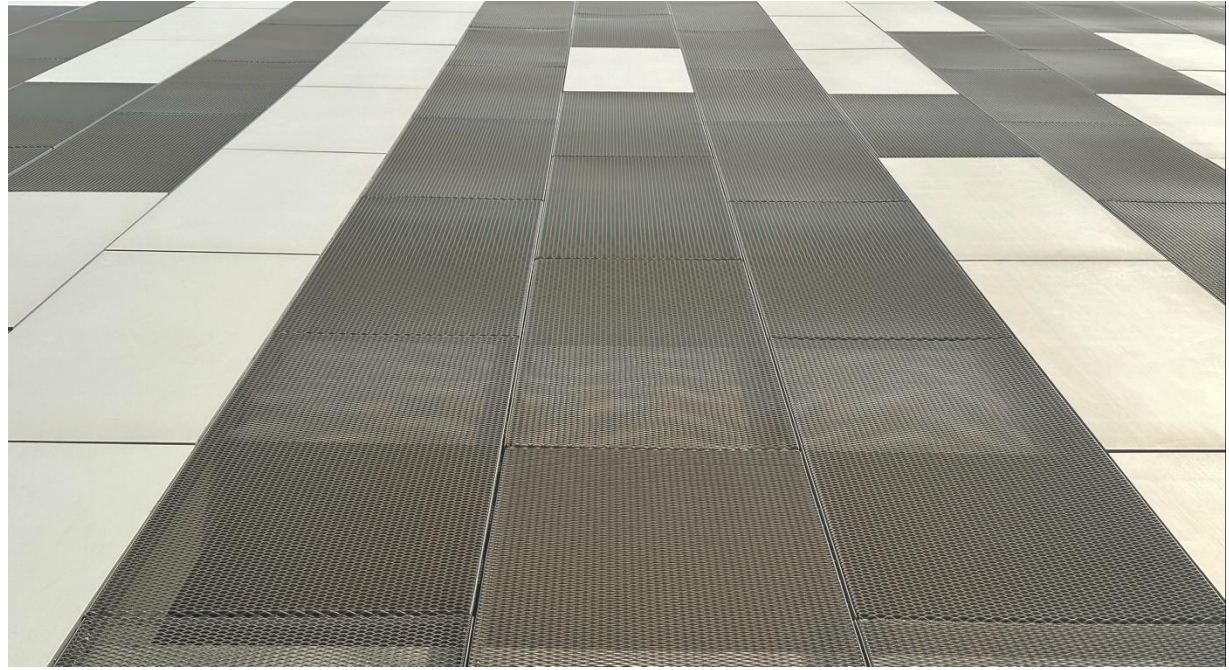
The expanded metal mesh effectively conceals the parking area and its infrastructure, contributing to the overall aesthetic of the towers while ensuring durability and low maintenance. Its refined pattern and robust construction offer both a modern look and practical performance for this high-traffic environment.

Location: Business Bay, Dubai - UAE

Client: Al Wasl Investment

Architect: ADPi





The Galleria Mall

The 200mm diamond pattern expanded metal mesh, supplied by KAPHS, is used for cladding the MEP (Mechanical, Electrical, and Plumbing) area on the entire rooftop of The Galleria Mall in Al Maryah Island, Abu Dhabi.

This robust mesh provides both aesthetic and functional benefits, enhancing the mall's rooftop while concealing the MEP infrastructure.

The diamond pattern adds a sleek and modern look to the rooftop, contributing to the overall architectural elegance of The Galleria Mall.

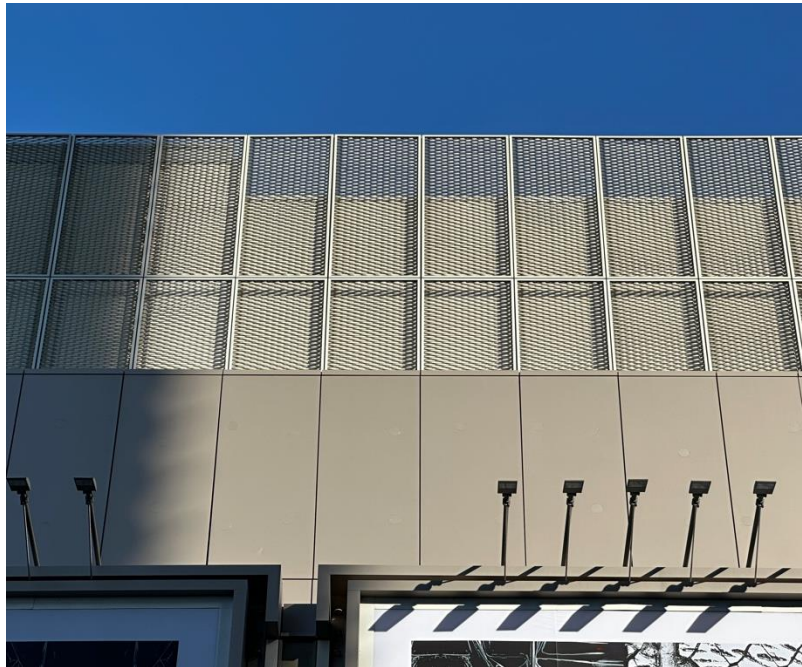
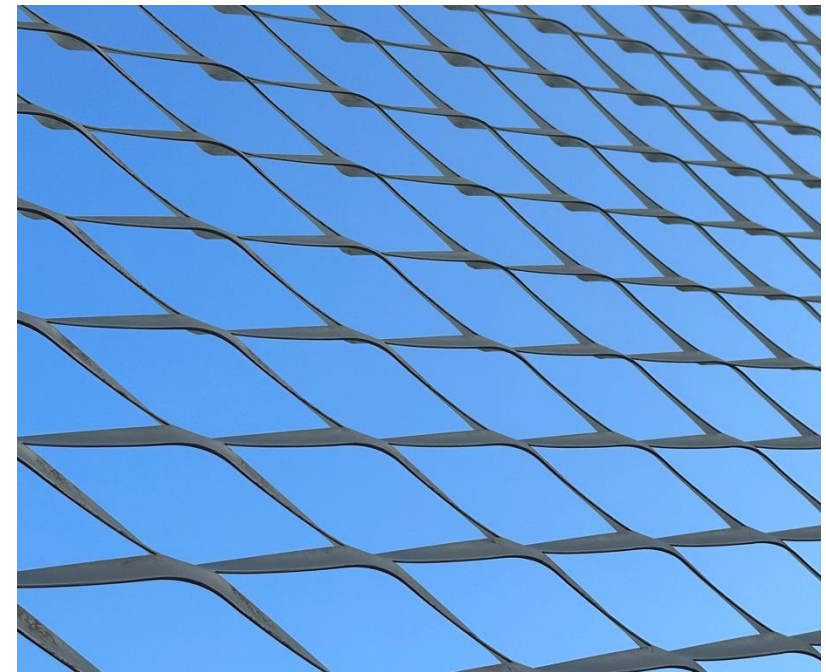
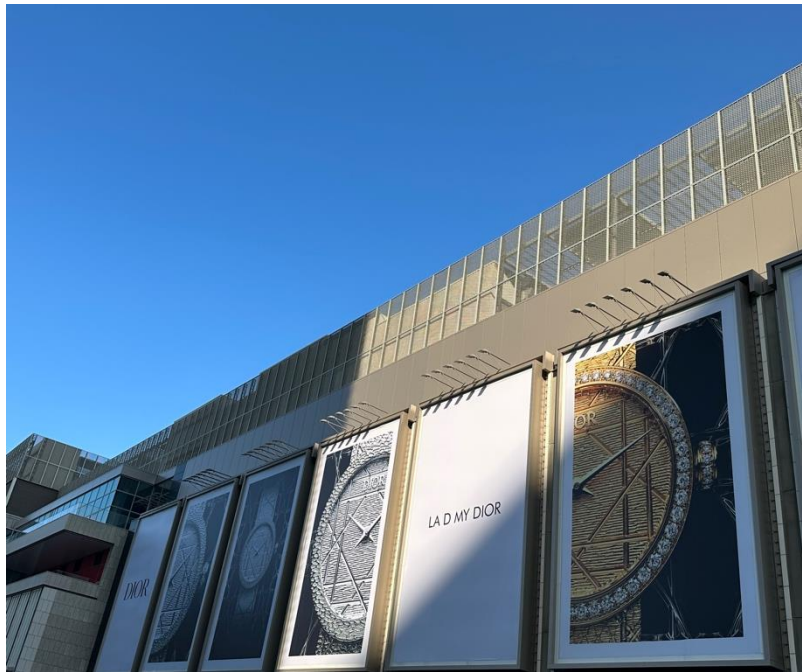
Additionally, the expanded metal mesh ensures effective ventilation and accessibility for maintenance purposes while protecting the MEP systems from environmental elements. Its durability and weather resistance make it an ideal choice for this high-traffic, exposed area, ensuring long-term performance and minimal maintenance.

Location: Abu Dhabi - UAE

Client: Al Maryah Retail Company

Architect: Elkus Manfredi Architects



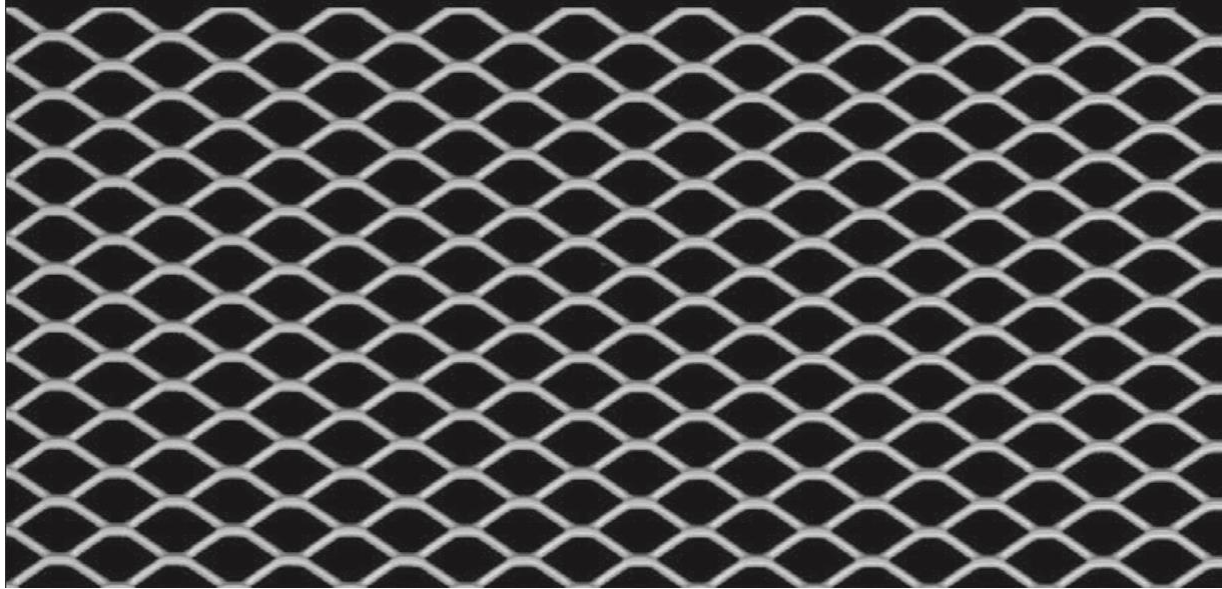


PROJECT REFERENCES

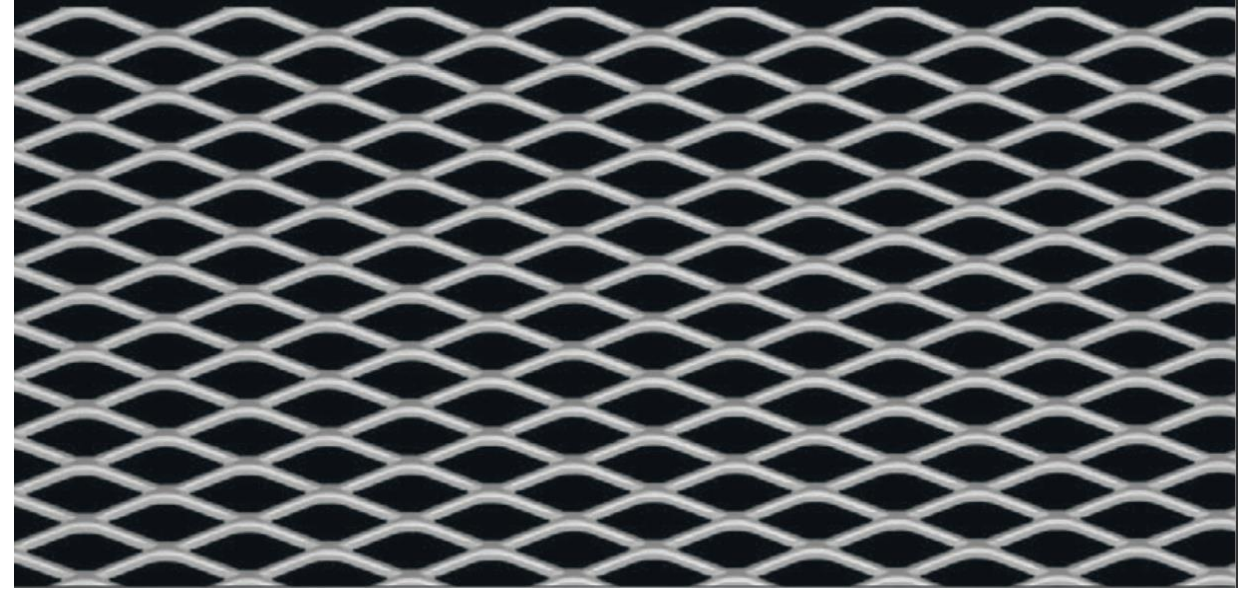
Project	Location	Client	Architect	M ² Area	Application
Sea World	Abu Dhabi - UAE	Miral	Faithful + Gould	4'000	Ventilated Façade
Al Mariah Central Mall	Abu Dhabi - UAE	Gulf Related	Elkus Manfredi	7'262	Canopy
Bluewaters Residences	Dubai - UAE	Meraas	10 Design	11'000	Canopy
Silicon Central Mall	Dubai - UAE	Lulu Group	Design International	40'000	Façade
Marina Gate Tower 3	Dubai - UAE	Select Group	Aedas	3'500	Ventilated Façade
DIFC Gate Avenue	Dubai - UAE	DIFC	RMJM	1'000	Cladding
Dubai Mall Zabeel Expansion	Dubai - UAE	Emaar	BSBG	1'000	Cladding
Al Ghurair Villas	Dubai - UAE	Al Ghurair Family	RCR Architectes	14'000	Cladding
Mercedes Benz Showrooms	Cairo – Egypt	Mercedes-Benz	Ratnsorb	2'000	Double Skin
STC Headquarter	Riyadh - KSA	STC	Khatib & Alami	430	Ventilated Façade
Rayban Stores	Dubai - UAE	Ray-Ban	Storemotion	Multiple	Interior Cladding
Manyata Techpark	Bangalore - India	Manyata	RSP India	2'000	Ventilated Façade
Adidas Showrooms	Dubai – UAE	Adidas	Adidas	Multiple	Suspended Ceiling

EXPANDED METAL MESH

Model Dortmund



Model Saarbrücken

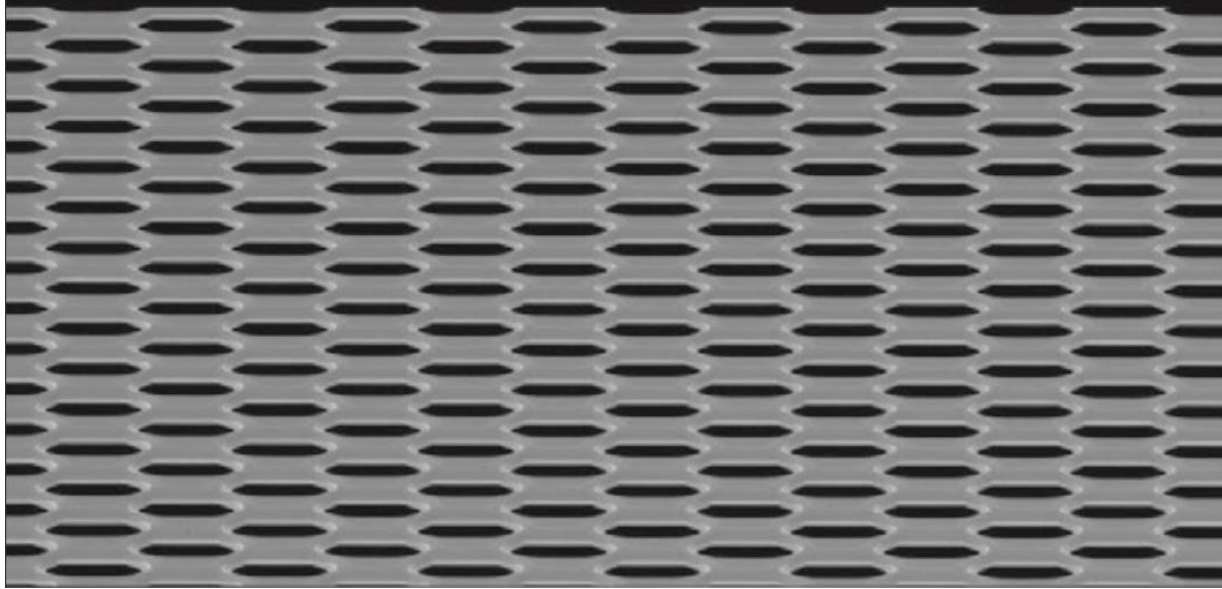


Mesh Spec.	Weight Steel	Weight Alu.	Total Thick.	Transparency
20/10/1,5/1 mm	2,4 kg/m ²	0,8 kg/m ²	4 mm	70%
20/10/1,5/1,5 mm	3,6 kg/m ²	1,3 kg/m ²	4 mm	70%

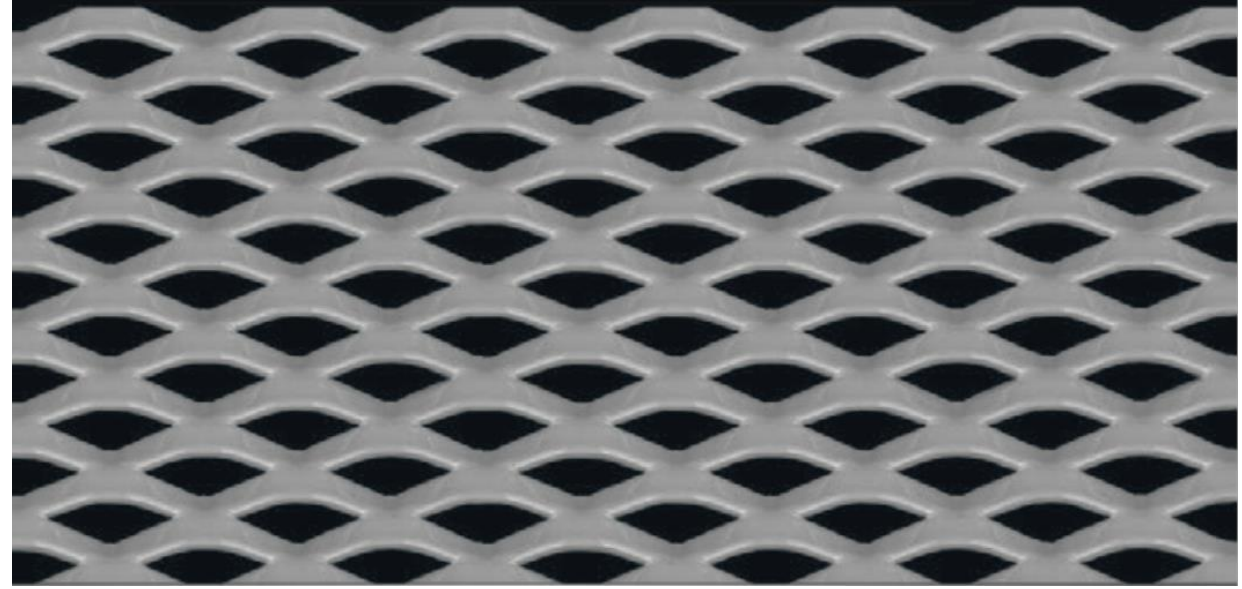
Mesh Spec.	Weight Steel	Weight Alu.	Total Thick.	Transparency
28/10/2/1 mm	2,3 kg/m ²	0,8 kg/m ²	3,5 mm	60%
28/10/2/1,5 mm	4,8 kg/m ²	1,7 kg/m ²	3,5 mm	60%
28/10/2/2 mm	6,4 kg/m ²	2,2 kg/m ²	3,5 mm	60%

EXPANDED METAL MESH

Model Homburg



Model Neunkirchen

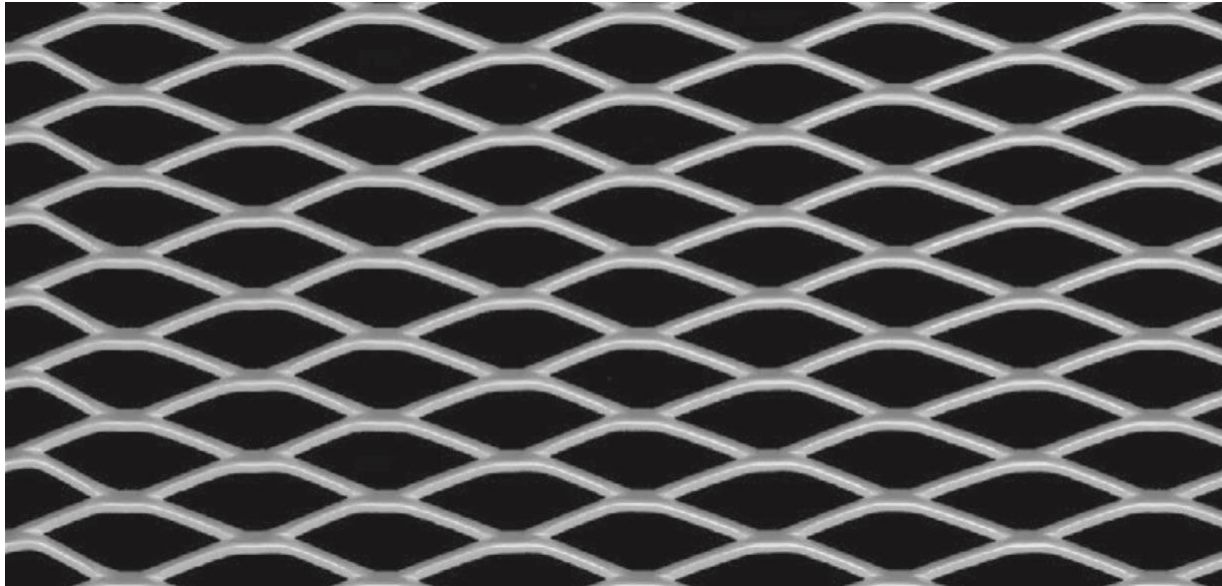


Mesh Spec.	Weight Steel	Weight Alu.	Total Thick.	Transparency
28/6/2,5/1 mm	6,7 kg/m ²	2,4 kg/m ²	4 mm	17%
28/6/2,5/1,5 mm	10,0 kg/m ²	3,5 kg/m ²	4 mm	17%
28/6/2,5/2 mm	13,3 kg/m ²	4,7 kg/m ²	4 mm	17%

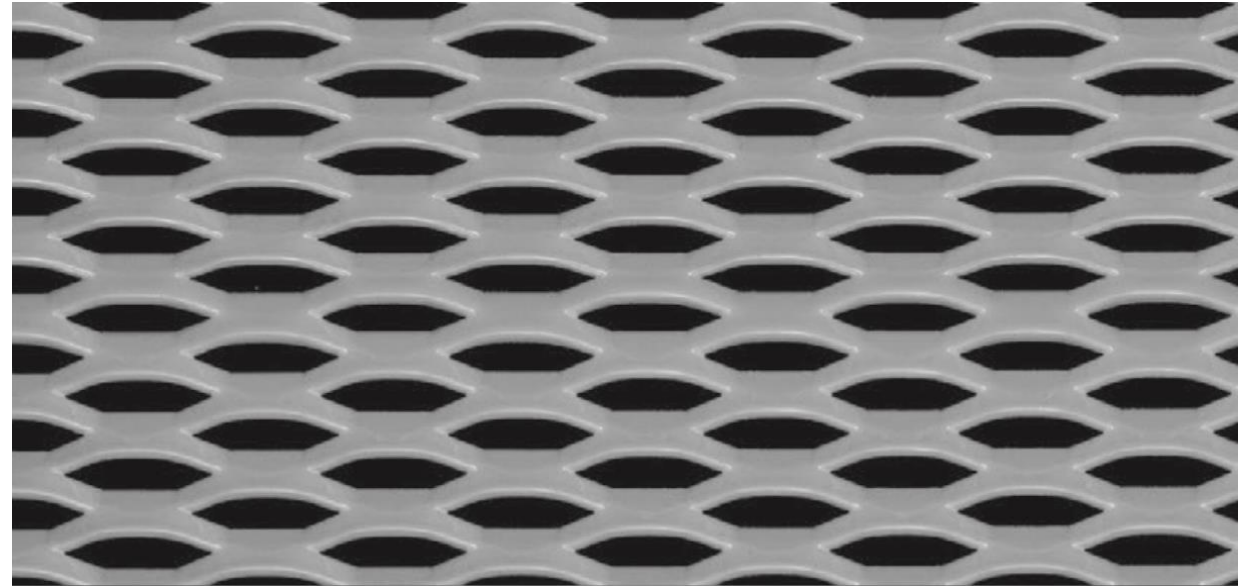
Mesh Spec.	Weight Steel	Weight Alu.	Total Thick.	Transparency
28/14/5/1,5 mm	8,6 kg/m ²	3,0 kg/m ²	7 mm	29%
28/14/5/2 mm	11,5 kg/m ²	4,0 kg/m ²	7 mm	29%
28/14/5/3 mm	17,2 kg/m ²	6,0 kg/m ²	7 mm	29%

EXPANDED METAL MESH

Model Karlsruhe



Model Lübeck

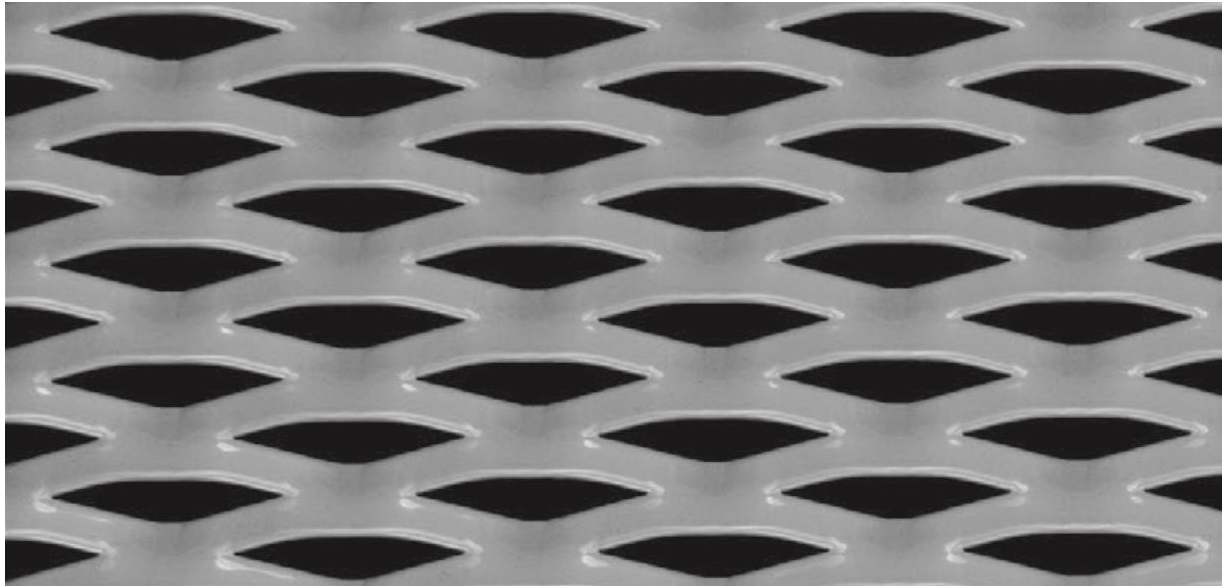


Mesh Spec.	Weight Steel	Weight Alu.	Total Thick.	Transparency
44/15/2,5/1,5 mm	4,0 kg/m ²	1,4 kg/m ²	5 mm	67%
44/15/2,5/2 mm	5,3 kg/m ²	1,9 kg/m ²	5 mm	67%
44/15/2,5/2,5 mm	6,7 kg/m ²	2,4 kg/m ²	5 mm	67%

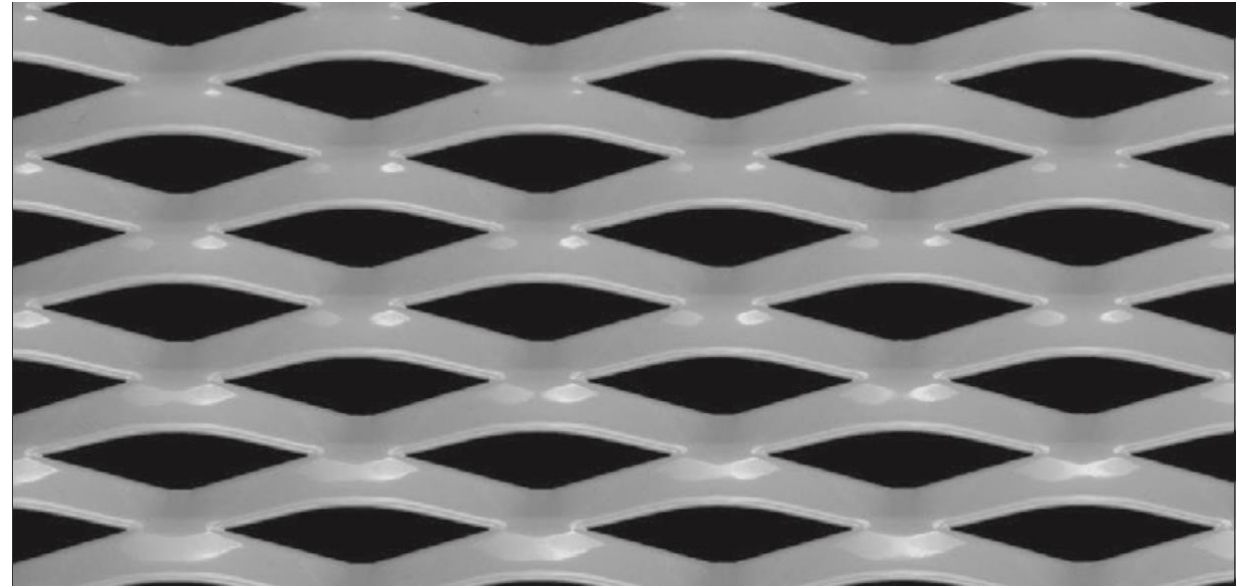
Mesh Spec.	Weight Steel	Weight Alu.	Total Thick.	Transparency
44/13,4/2/1,5 mm	9,0 kg/m ²	3,1 kg/m ²	8 mm	26%
44/13,4/2,5/2 mm	12,0 kg/m ²	4,2 kg/m ²	8 mm	26%
44/13,4/2,5/3 mm	18,0 kg/m ²	6,3 kg/m ²	8 mm	26%

EXPANDED METAL MESH

Model Kiel



Model Magdeburg

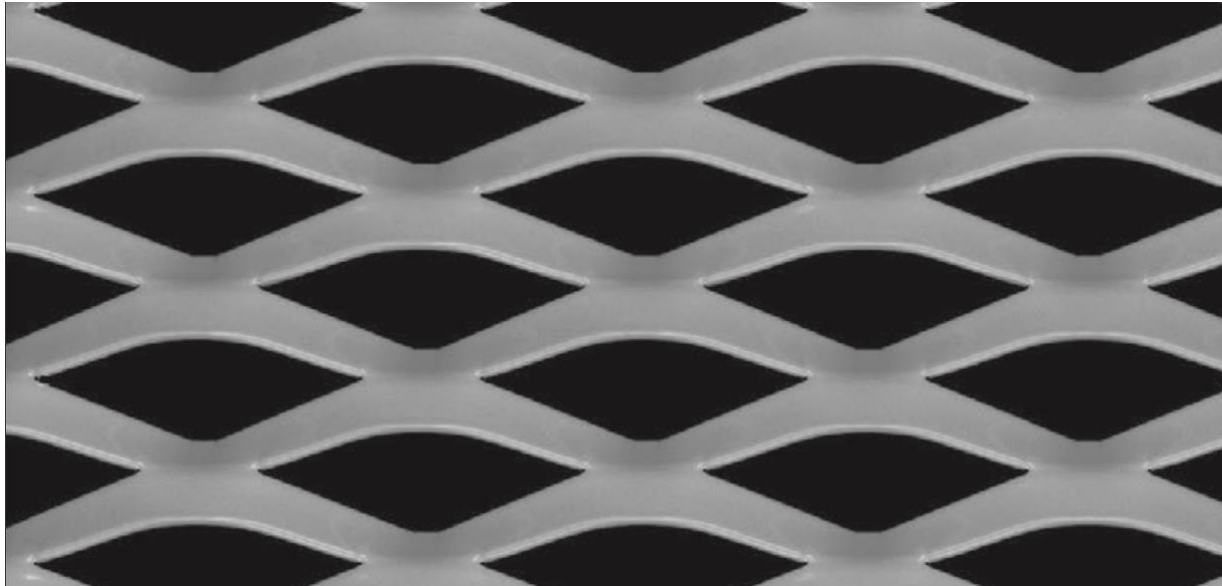


Mesh Spec.	Weight Steel	Weight Alu.	Total Thick.	Transparency
62/20/7,5/1,5 mm	9,0 kg/m ²	3,2 kg/m ²	11 mm	26%
62/20/7,5/2 mm	12,0 kg/m ²	4,2 kg/m ²	11 mm	26%
62/20/7,5/3 mm	18,0 kg/m ²	6,3 kg/m ²	11mm	26%

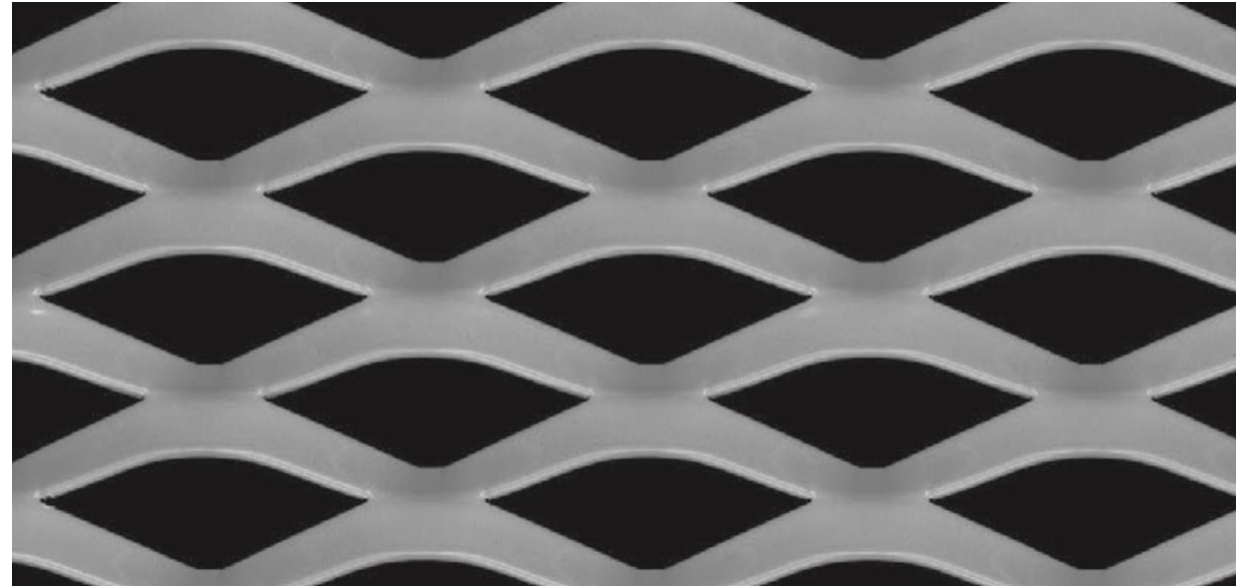
Mesh Spec.	Weight Steel	Weight Alu.	Total Thick.	Transparency
62/25,5/9/1,5 mm	8,6 kg/m ²	3,0 kg/m ²	11 mm	19%
62/25,5/9/2 mm	11,4 kg/m ²	4,0 kg/m ²	11 mm	19%
62/25,5/9/3 mm	17,1 kg/m ²	6,0 kg/m ²	11 mm	19%

EXPANDED METAL MESH

Model Heidelberg



Model Koblenz

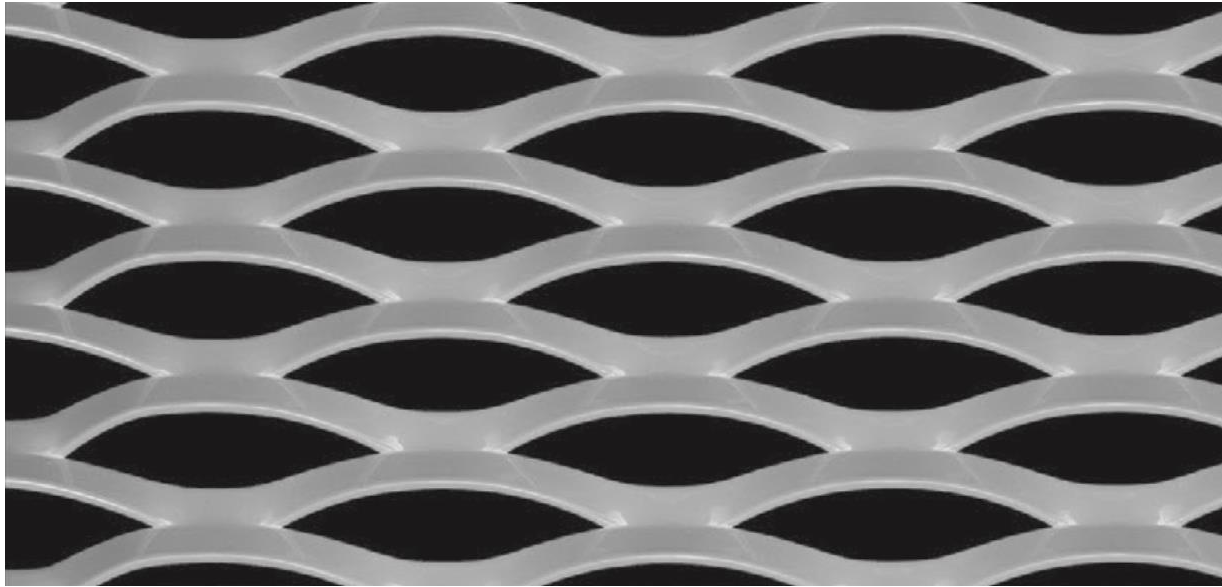


Mesh Spec.	Weight Steel	Weight Alu.	Total Thick.	Transparency
76/31/11/1,5 mm	8,5 kg/m ²	3,0 kg/m ²	13 mm	29%
76/31/11/2 mm	11,4 kg/m ²	4,0 kg/m ²	13 mm	29%
76/31/11/3 mm	17,0 kg/m ²	6,0 kg/m ²	13 mm	29%

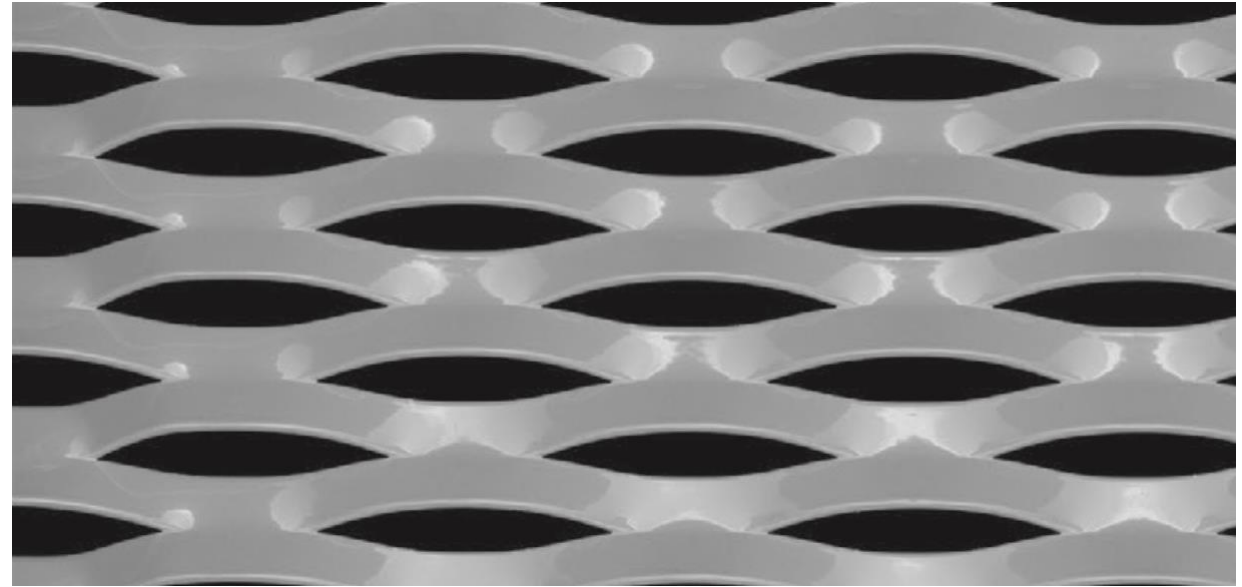
Mesh Spec.	Weight Steel	Weight Alu.	Total Thick.	Transparency
76/35/9/1,5 mm	7,6 kg/m ²	2,6 kg/m ²	16 mm	38%
76/35/9/2 mm	10,1 kg/m ²	3,5 kg/m ²	16 mm	38%
76/35/9/3 mm	15,1 kg/m ²	5,3 kg/m ²	16 mm	38%

EXPANDED METAL MESH

Model Lörrach



Model Lahr

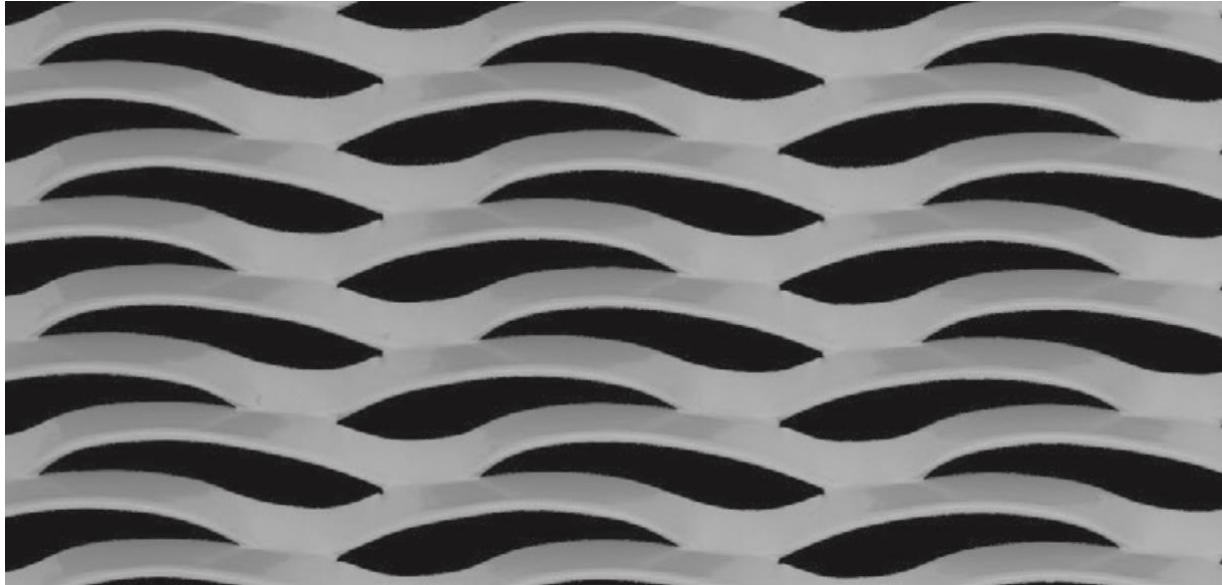


Mesh Spec.	Weight Steel	Weight Alu.	Total Thick.	Transparency
77/26/8/1,5 mm	7,5 kg/m ²	2,6 kg/m ²	12 mm	39%
77/26/8/2 mm	9,9 kg/m ²	3,5 kg/m ²	12 mm	39%
77/26/8/3 mm	14,8 kg/m ²	5,2 kg/m ²	12 mm	39%

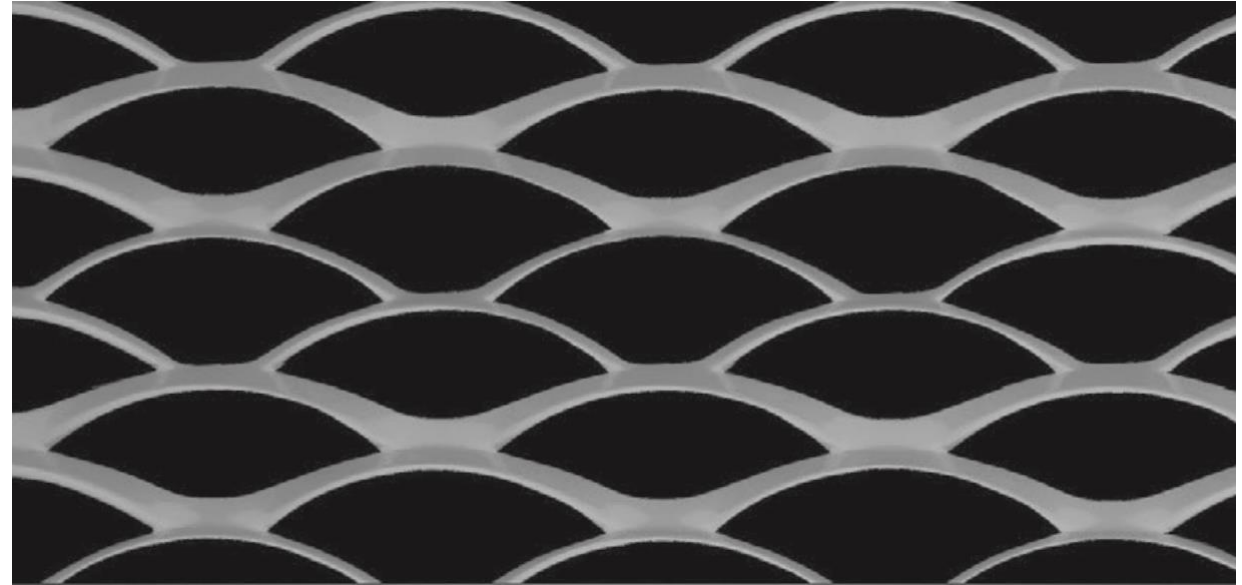
Mesh Spec.	Weight Steel	Weight Alu.	Total Thick.	Transparency
77/26/10/1,5 mm	9,2 kg/m ²	3,2 kg/m ²	12 mm	24%
77/26/10/2 mm	12,3 kg/m ²	4,3 kg/m ²	12 mm	24%
77/26/10/3 mm	18,5 kg/m ²	6,5 kg/m ²	12 mm	24%

EXPANDED METAL MESH

Model Freiburg



Model Offenburg

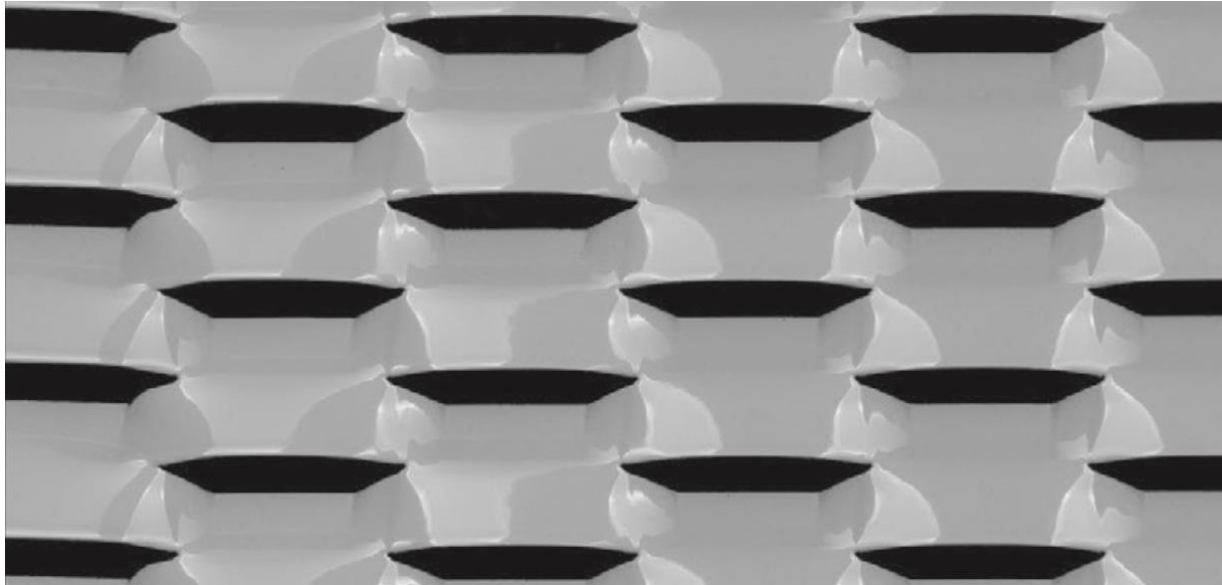


Mesh Spec.	Weight Steel	Weight Alu.	Total Thick.	Transparency
77/Offset/1,5 mm	8,0 kg/m ²	2,8 kg/m ²	13 mm	34%
77/Offset/2 mm	10,7 kg/m ²	3,7 kg/m ²	13 mm	34%
77/Offset/3 mm	16,0 kg/m ²	5,6 kg/m ²	13 mm	34%

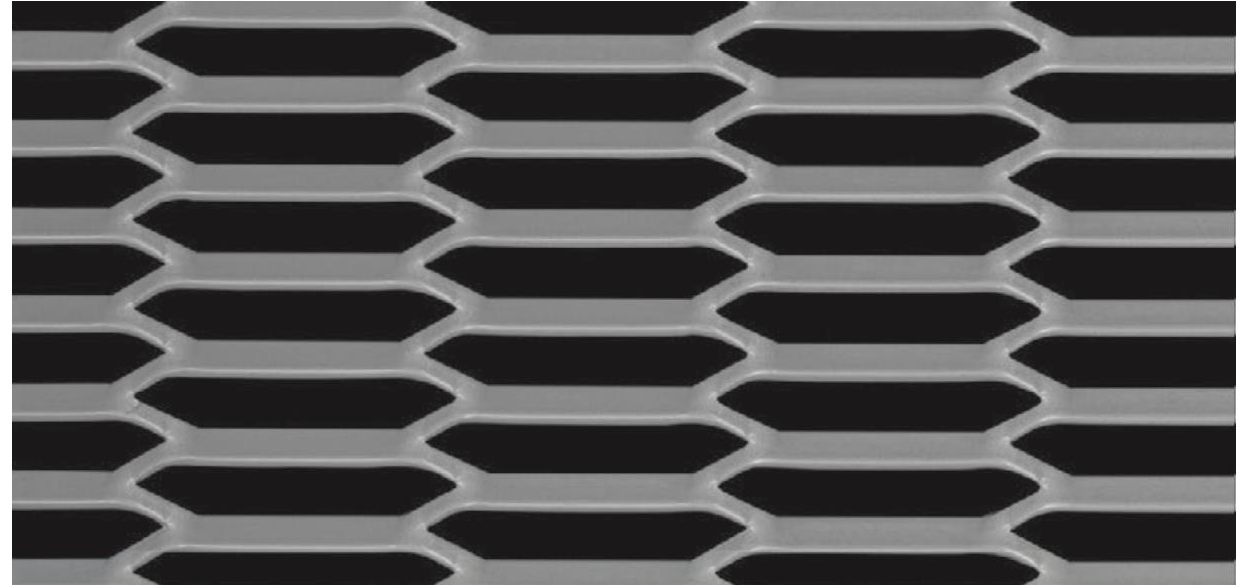
Mesh Spec.	Weight Steel	Weight Alu.	Total Thick.	Transparency
77/Multi/1,5 mm	5,5 kg/m ²	1,9 kg/m ²	13 mm	54%
77/Multi/2 mm	7,4 kg/m ²	2,6 kg/m ²	13 mm	54%
77/Multi/3 mm	11,1 kg/m ²	3,9 kg/m ²	13 mm	54%

EXPANDED METAL MESH

Model Ausburg



Model Hannover

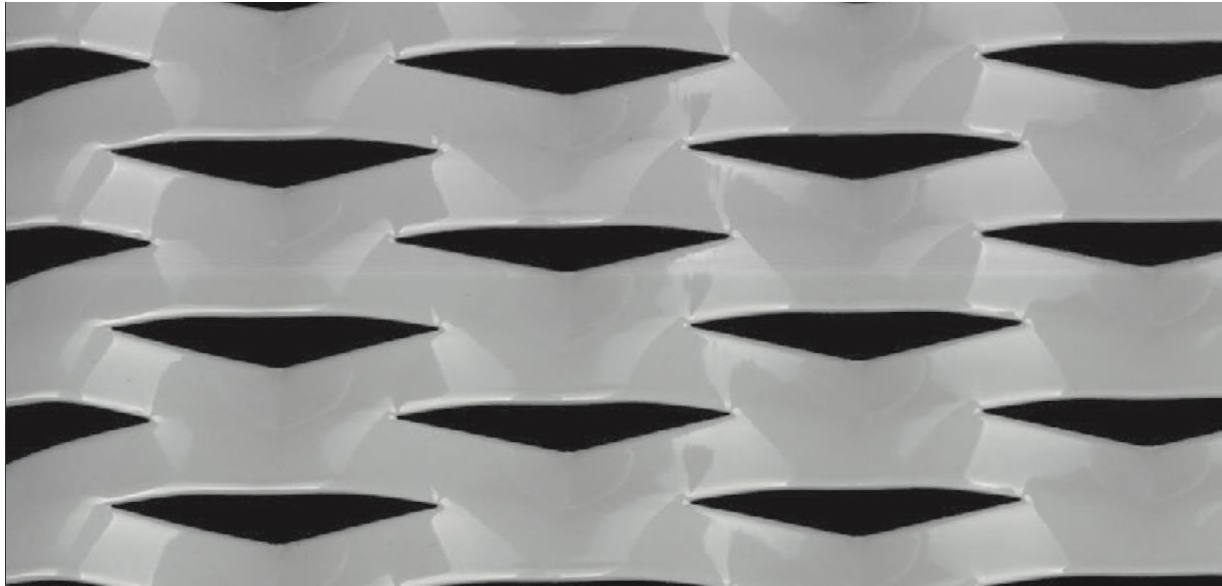


Mesh Spec.	Weight Steel	Weight Alu.	Total Thick.	Transparency
80/30/13/1,5 mm	10,4 kg/m ²	3,6 kg/m ²	12 mm	14%
80/30/13/2 mm	13,9 kg/m ²	4,9 kg/m ²	12 mm	14%
80/30/13/3 mm	20,8 kg/m ²	7,3 kg/m ²	12 mm	14%

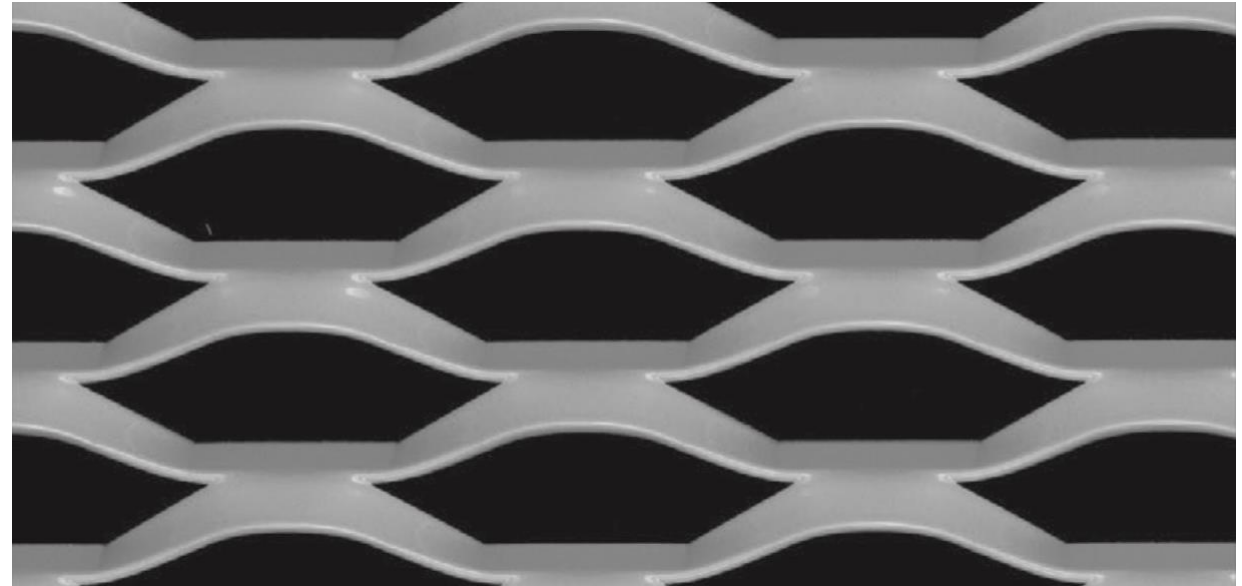
Mesh Spec.	Weight Steel	Weight Alu.	Total Thick.	Transparency
100/14/4/1,5 mm	6,9 kg/m ²	2,4 kg/m ²	8 mm	43%
100/14/4/2 mm	9,2 kg/m ²	3,2 kg/m ²	8 mm	43%
100/14/4/3 mm	13,7 kg/m ²	4,8 kg/m ²	8 mm	43%

EXPANDED METAL MESH

Model Kassel



Model Frankfurt

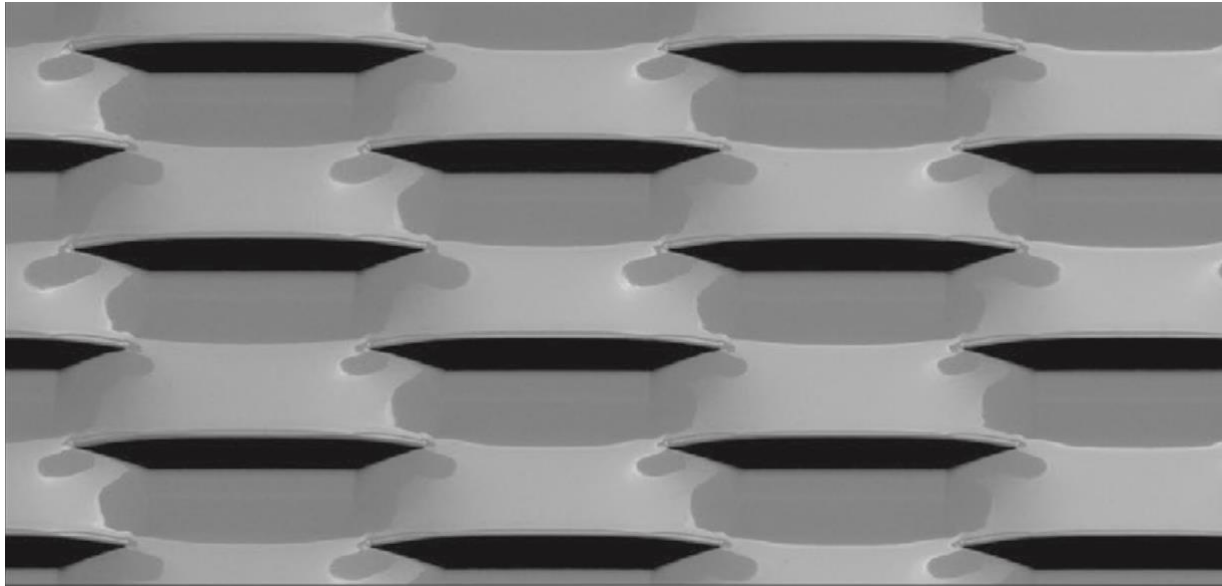


Mesh Spec.	Weight Steel	Weight Alu.	Total Thick.	Transparency
100/30/13/1,5 mm	10,4 kg/m ²	3,6 kg/m ²	15 mm	14%
100/30/13/2 mm	13,9 kg/m ²	4,9 kg/m ²	15 mm	14%
100/30/13/3 mm	20,8 kg/m ²	7,3 kg/m ²	15 mm	14%

Mesh Spec.	Weight Steel	Weight Alu.	Total Thick.	Transparency
100/34/4/1,5 mm	7,1 kg/m ²	2,5 kg/m ²	14 mm	42%
100/34/4/2 mm	9,4 kg/m ²	3,3 kg/m ²	14 mm	42%
100/34/4/3 mm	14,1 kg/m ²	5,0 kg/m ²	14 mm	42%

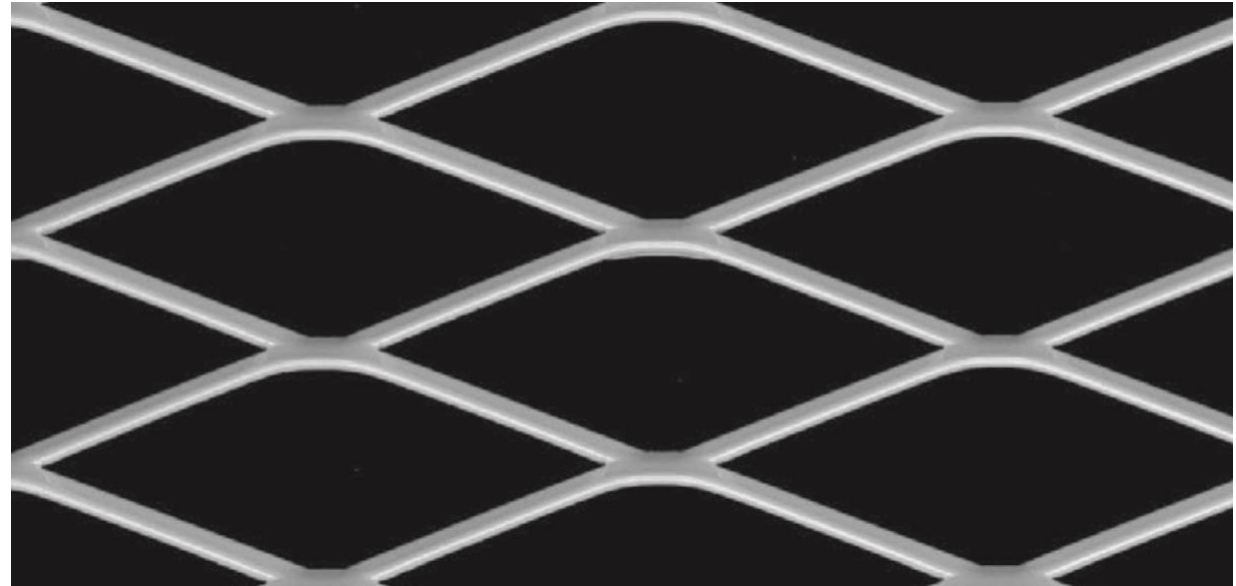
EXPANDED METAL MESH

Model Wiesbaden



Mesh Spec.	Weight Steel	Weight Alu.	Total Thick.	Transparency
100/30/13/1,5 mm	10,4 kg/m ²	3,6 kg/m ²	15 mm	14%
100/30/13/2 mm	13,9 kg/m ²	4,9 kg/m ²	15 mm	14%
100/30/13/3 mm	20,8 kg/m ²	7,3 kg/m ²	15 mm	14%

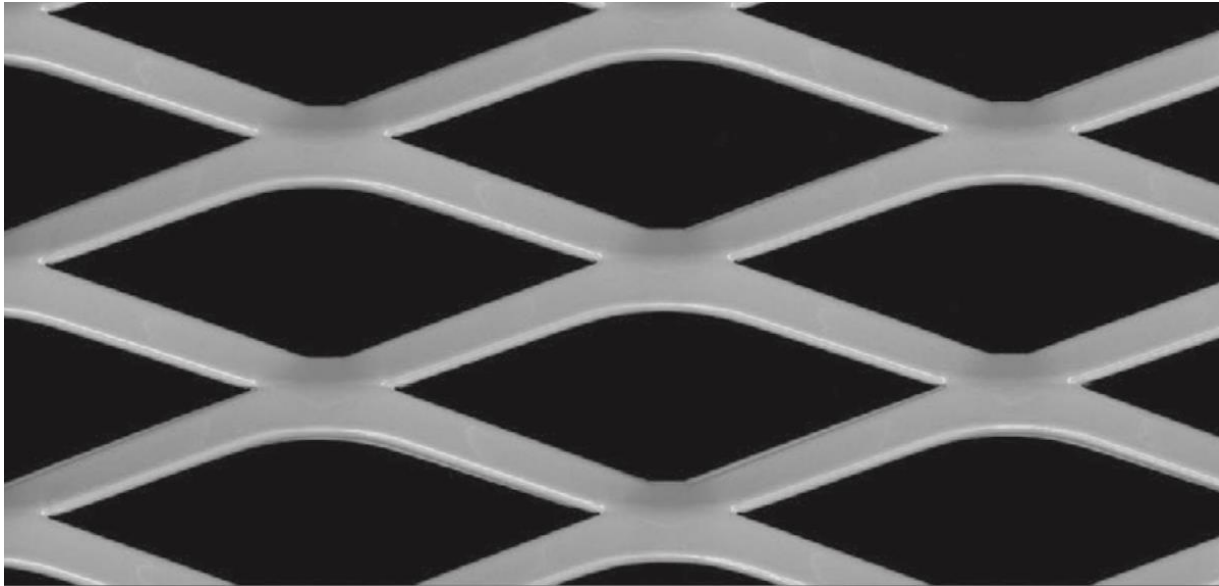
Model Rostock



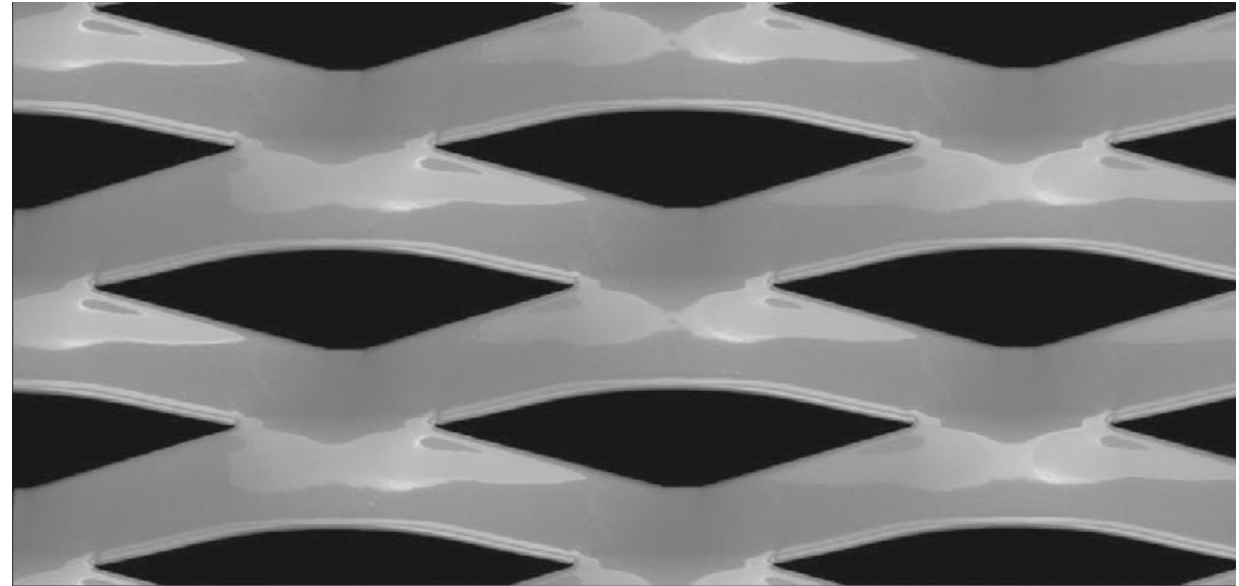
Mesh Spec.	Weight Steel	Weight Alu.	Total Thick.	Transparency
115/40/6/1,5 mm	3,6 kg/m ²	1,3 kg/m ²	12 mm	70%
115/40/6/2 mm	4,8 kg/m ²	1,7 kg/m ²	12 mm	70%
115/40/6/3 mm	7,2 kg/m ²	2,5 kg/m ²	12 mm	70%

EXPANDED METAL MESH

Model Ludwigshafen



Model Köln

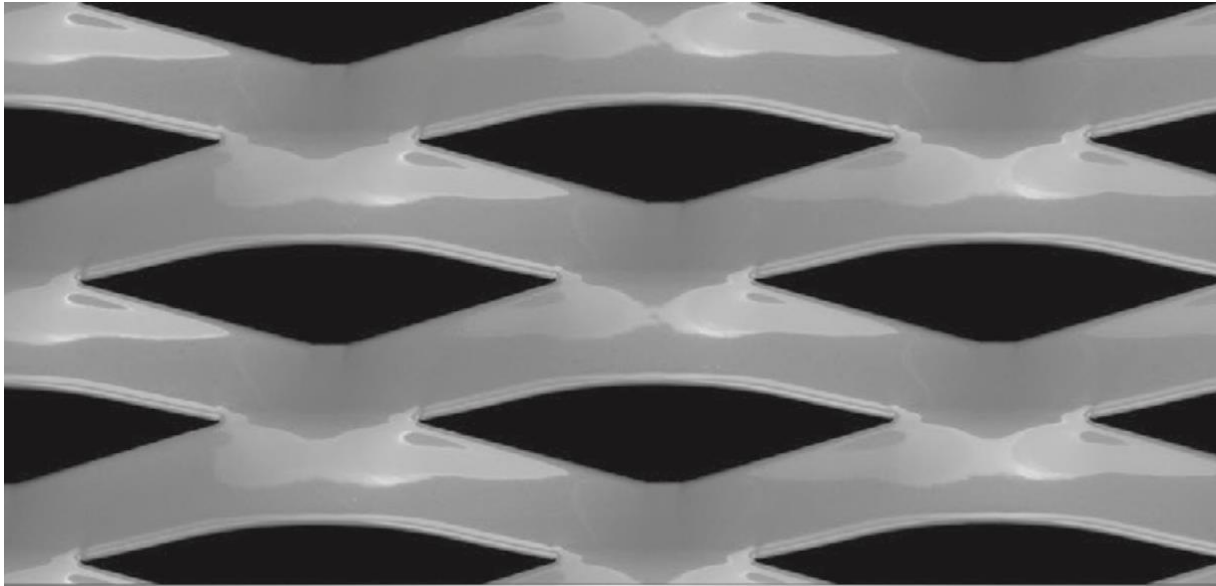


Mesh Spec.	Weight Steel	Weight Alu.	Total Thick.	Transparency
115/42/10/1,5 mm	5,7 kg/m ²	2,0 kg/m ²	17 mm	53%
115/42/10/2 mm	7,6 kg/m ²	2,7 kg/m ²	17 mm	53%
115/42/10/3 mm	11,4 kg/m ²	4,0 kg/m ²	17 mm	53%

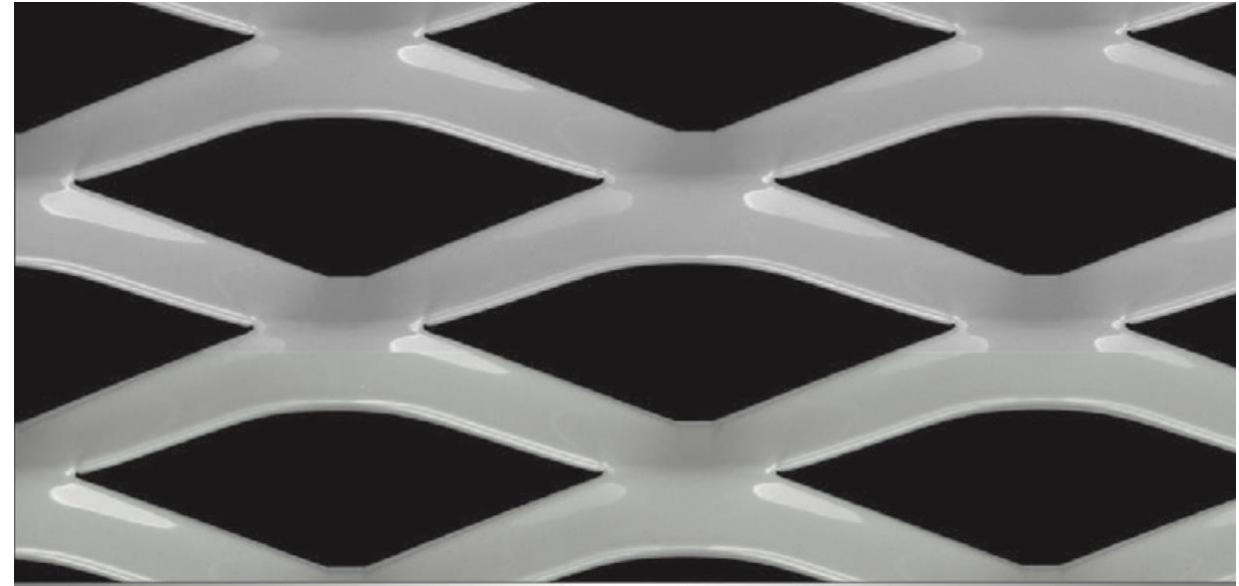
Mesh Spec.	Weight Steel	Weight Alu.	Total Thick.	Transparency
115/48/18/1,5 mm	9,0 kg/m ²	3,2 kg/m ²	21 mm	25%
115/48/18/2 mm	12,0 kg/m ²	4,2 kg/m ²	21 mm	25%
115/48/18/3 mm	18,0 kg/m ²	6,3 kg/m ²	21 mm	25%

EXPANDED METAL MESH

Model Mannheim



Model Kassel

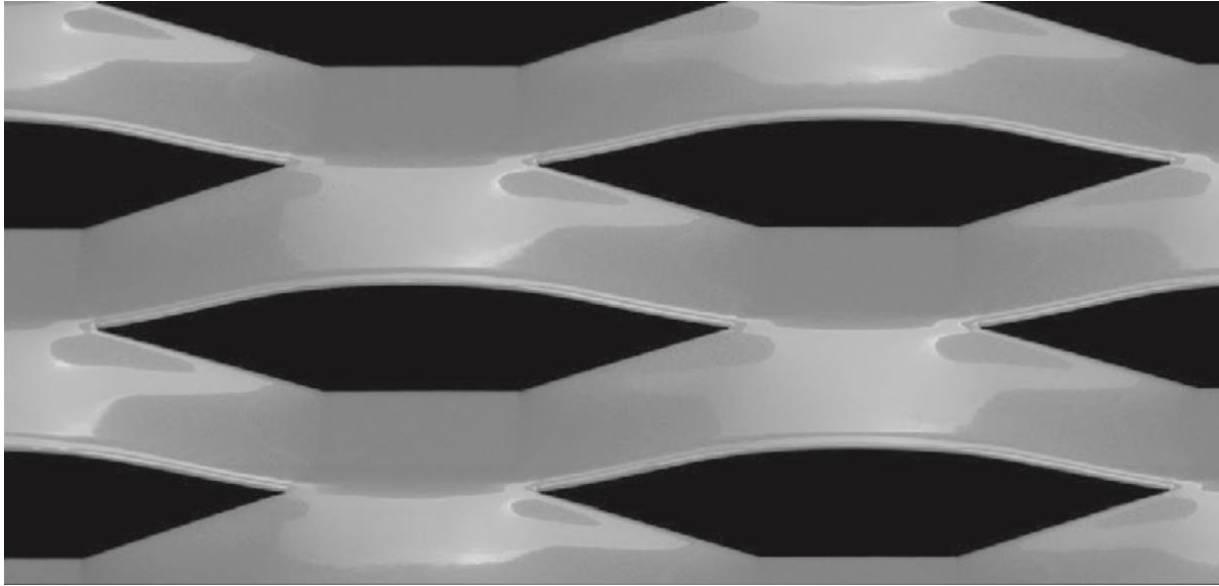


Mesh Spec.	Weight Steel	Weight Alu.	Total Thick.	Transparency
115/48/20/1,5 mm	10,0 kg/m ²	3,5 kg/m ²	20 mm	17%
115/48/20/2 mm	13,3 kg/m ²	4,7 kg/m ²	20 mm	17%
115/48/20/3 mm	20,0 kg/m ²	7,0 kg/m ²	20 mm	17%

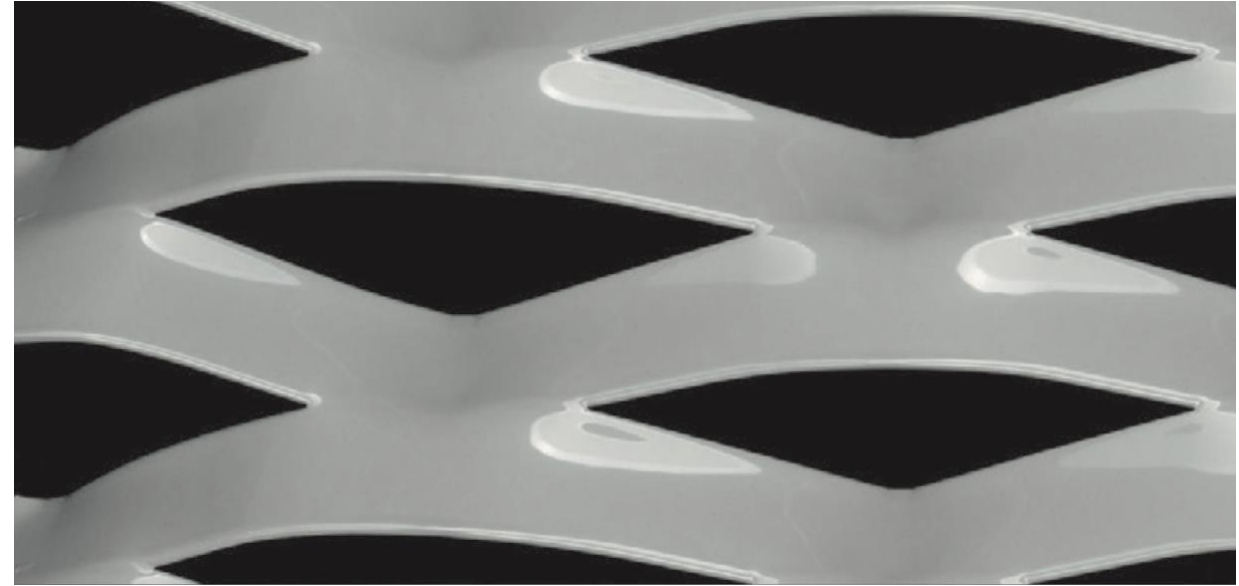
Mesh Spec.	Weight Steel	Weight Alu.	Total Thick.	Transparency
120/20/15/1,5 mm	7,2 kg/m ²	2,5 kg/m ²	21 mm	40%
120/50/15/2 mm	9,6 kg/m ²	3,4 kg/m ²	21 mm	40%
120/50/15/3 mm	14,4 kg/m ²	5,0 kg/m ²	21 mm	40%

EXPANDED METAL MESH

Model Singen



Model Eppingen

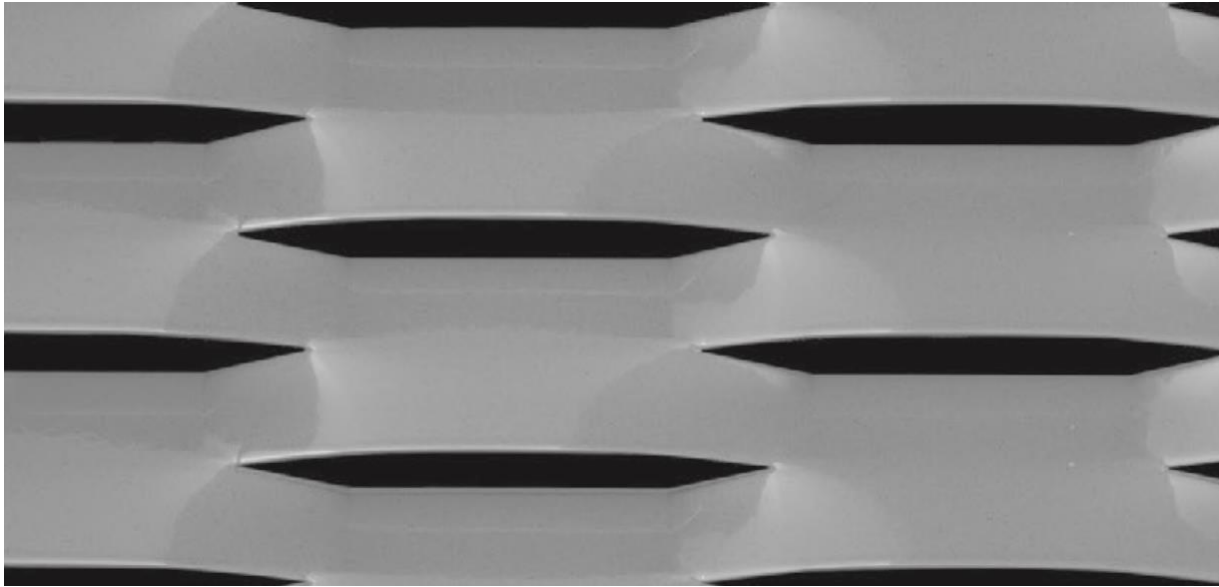


Mesh Spec.	Weight Steel	Weight Alu.	Total Thick.	Transparency
150/56/21,5/1,5 mm	9,2 kg/m ²	3,2 kg/m ²	24 mm	24%
150/56/21,5/2 mm	12,3 kg/m ²	4,3 kg/m ²	24 mm	24%
150/56/21,5/3 mm	18,4 kg/m ²	6,5 kg/m ²	24 mm	24%

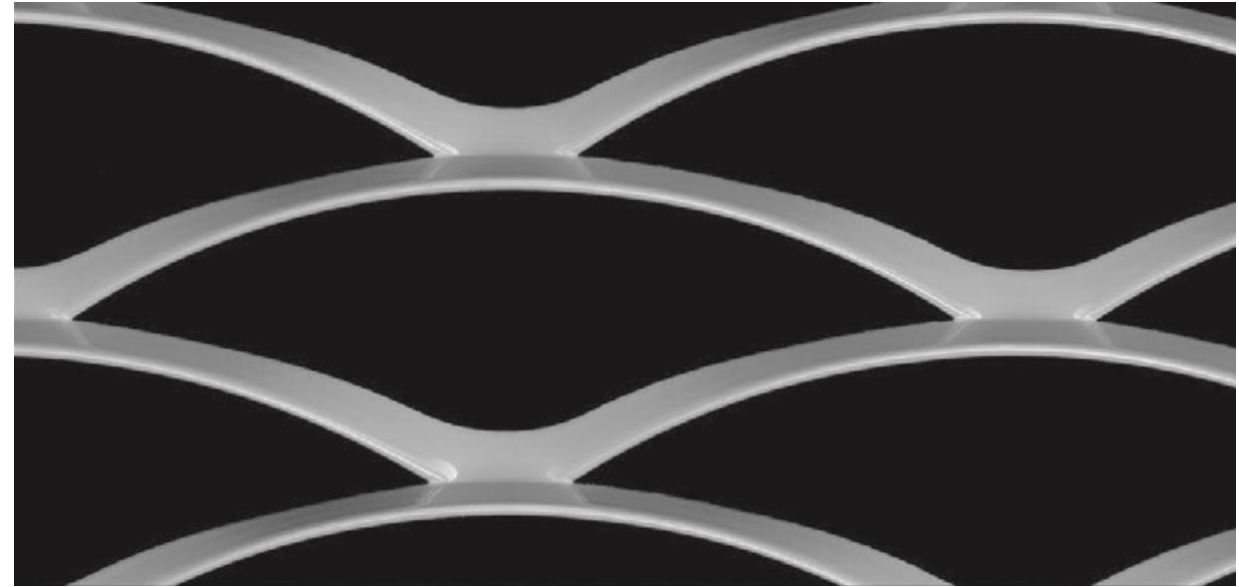
Mesh Spec.	Weight Steel	Weight Alu.	Total Thick.	Transparency
150/60/24/1,5 mm	9,6 kg/m ²	3,4 kg/m ²	26 mm	20%
150/60/24/2 mm	12,6 kg/m ²	4,5 kg/m ²	26 mm	20%
150/60/24/3 mm	19,2 kg/m ²	6,7 kg/m ²	26 mm	20%

EXPANDED METAL MESH

Model Dresden



Model Rastatt

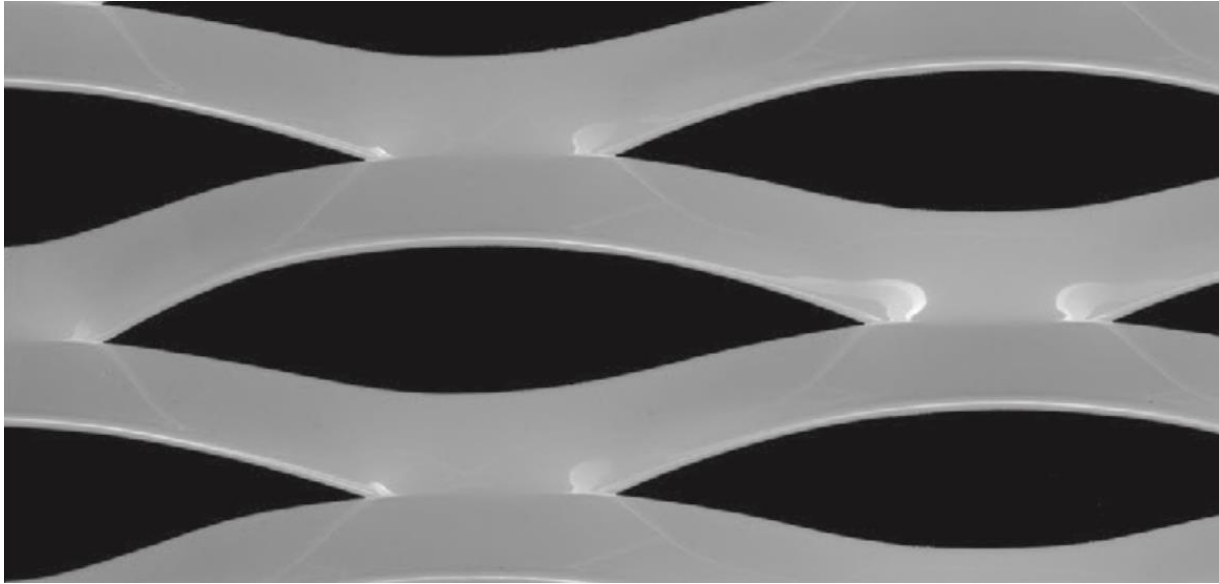


Mesh Spec.	Weight Steel	Weight Alu.	Total Thick.	Transparency
160/40/18/1,5 mm	10,8 kg/m ²	3,8 kg/m ²	16 mm	10%
160/40/18/2 mm	14,4 kg/m ²	5,0 kg/m ²	16 mm	10%
160/40/18/3 mm	21,6 kg/m ²	7,6 kg/m ²	16 mm	10%

Mesh Spec.	Weight Steel	Weight Alu.	Total Thick.	Transparency
170/56/10/1,5 mm	4,3 kg/m ²	1,5 kg/m ²	17 mm	65%
170/56/10/2 mm	5,7 kg/m ²	2,0 kg/m ²	17 mm	65%
170/56/10/3 mm	8,6 kg/m ²	3,0 kg/m ²	17 mm	65%

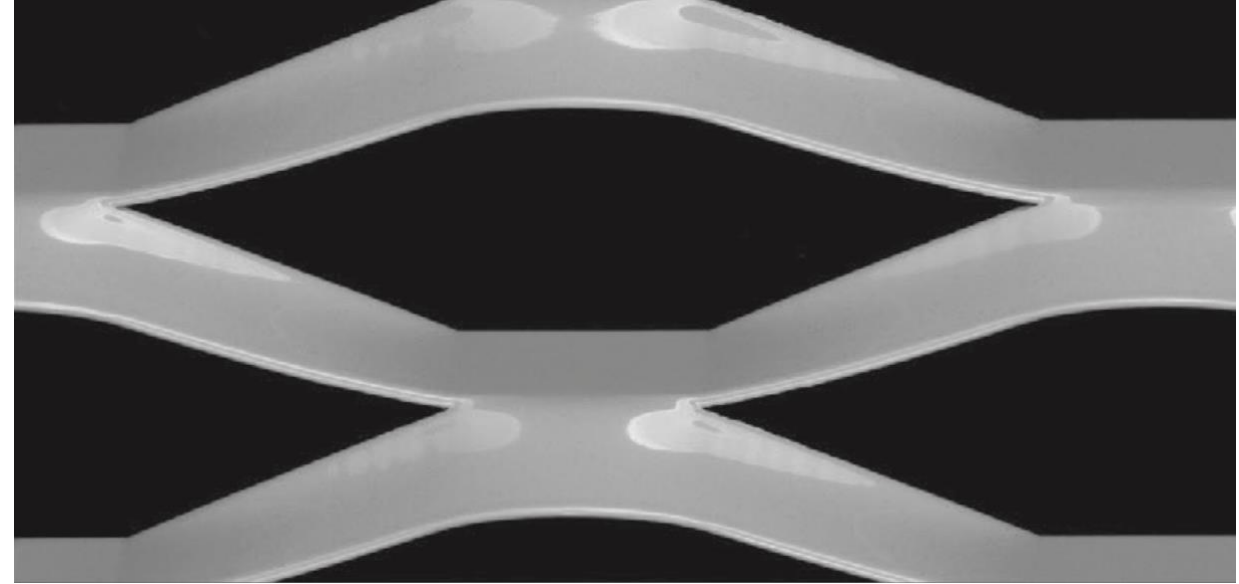
EXPANDED METAL MESH

Model Regensburg



Mesh Spec.	Weight Steel	Weight Alu.	Total Thick.	Transparency
170/56/20/1,5 mm	8,6 kg/m ²	3,0 kg/m ²	25 mm	29%
170/56/20/2 mm	11,4 kg/m ²	4,0 kg/m ²	25 mm	29%
170/56/20/3 mm	17,2 kg/m ²	6,2 kg/m ²	25 mm	29%

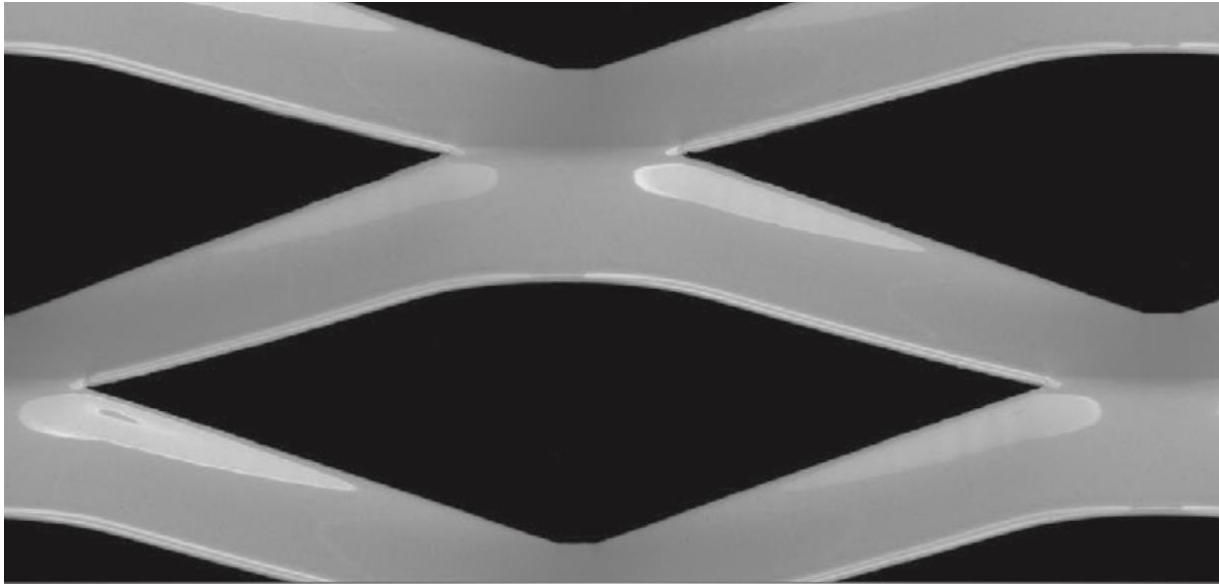
Model Erlangen



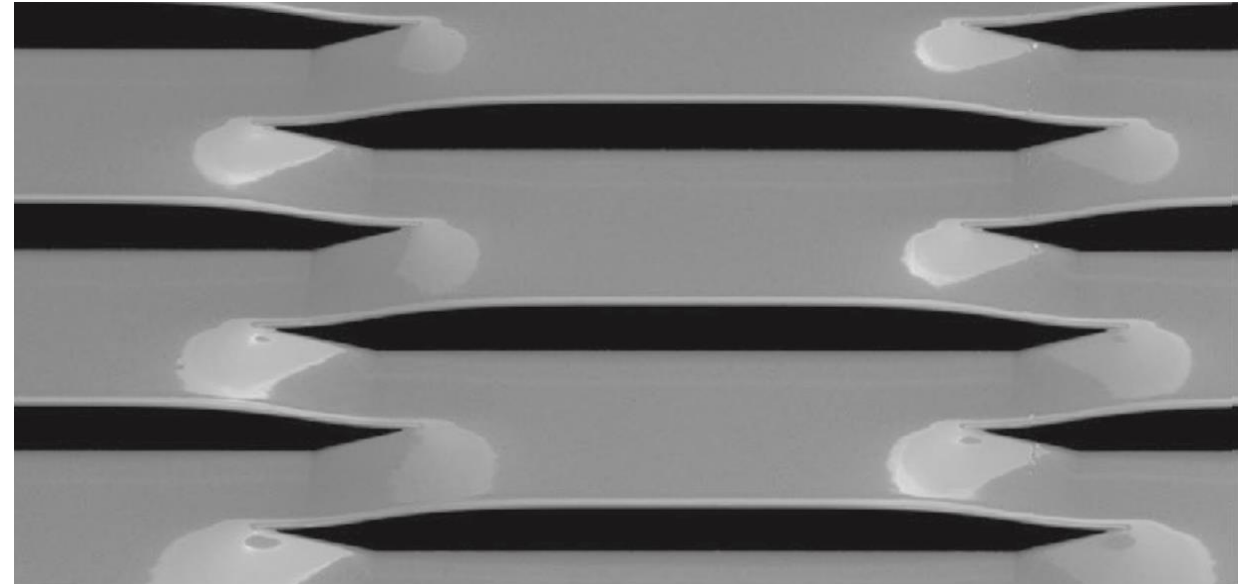
Mesh Spec.	Weight Steel	Weight Alu.	Total Thick.	Transparency
200/70/20/1,5 mm	4,3 kg/m ²	2,5 kg/m ²	28 mm	42%
200/70/20/2 mm	5,7 kg/m ²	3,3 kg/m ²	28 mm	42%
200/70/20/3 mm	8,6 kg/m ²	5,0 kg/m ²	28 mm	42%

EXPANDED METAL MESH

Model Sinsheim



Model Weissach

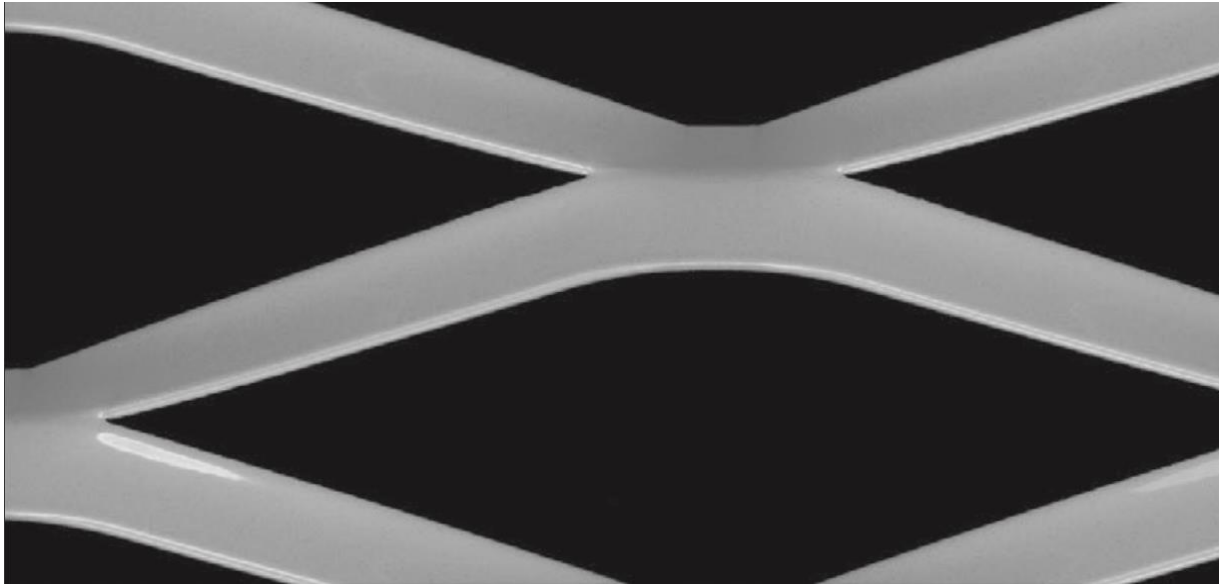


Mesh Spec.	Weight Steel	Weight Alu.	Total Thick.	Transparency
200/80/24/1,5 mm	7,2 kg/m ²	2,5 kg/m ²	33 mm	40%
200/80/24/2 mm	9,4 kg/m ²	3,3 kg/m ²	33 mm	40%
200/80/24/3 mm	14,4 kg/m ²	5,0 kg/m ²	33 mm	40%

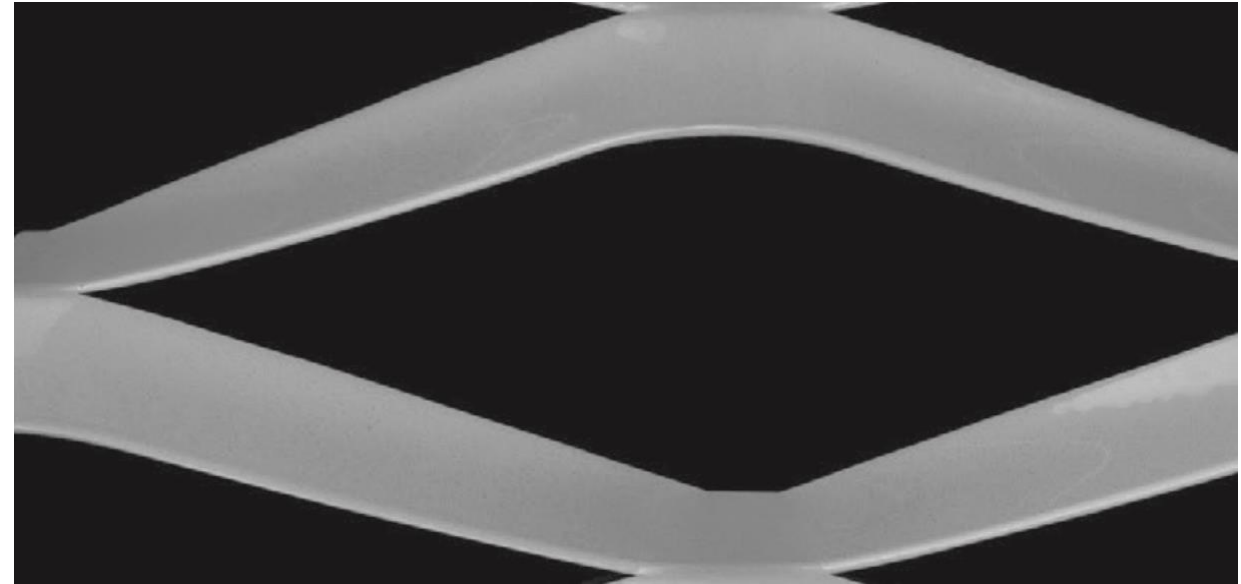
Mesh Spec.	Weight Steel	Weight Alu.	Total Thick.	Transparency
242/35/15/1,5 mm	10,3 kg/m ²	3,6 kg/m ²	16 mm	15%
242/35/15/2 mm	13,7 kg/m ²	4,8 kg/m ²	16 mm	15%
242/35/15/3 mm	20,6 kg/m ²	7,2 kg/m ²	16 mm	15%

EXPANDED METAL MESH

Model Darmstadt



Model Friedrichshafen

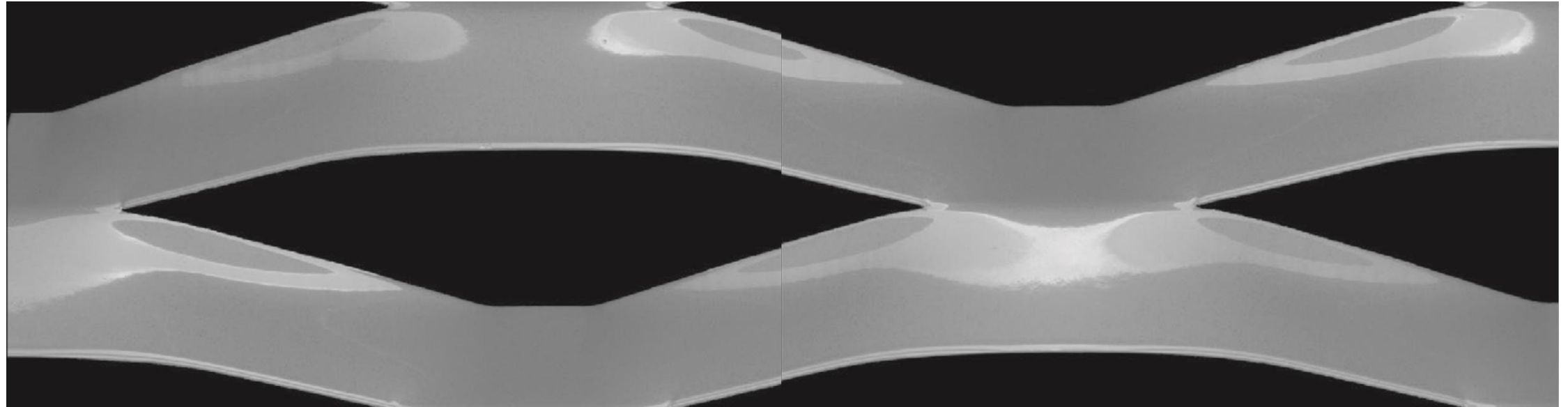


Mesh Spec.	Weight Steel	Weight Alu.	Total Thick.	Transparency
250/83/20/1,5 mm	5,8 kg/m ²	2,1 kg/m ²	31 mm	52%
250/83/20/2 mm	7,7 kg/m ²	2,7 kg/m ²	31 mm	52%
250/83/20/3 mm	11,6 kg/m ²	4,1 kg/m ²	31 mm	52%

Mesh Spec.	Weight Steel	Weight Alu.	Total Thick.	Transparency
250/94/25/1,5 mm	6,4 kg/m ²	2,3 kg/m ²	36 mm	47%
250/94/25/2 mm	8,5 kg/m ²	3,0 kg/m ²	36 mm	47%
250/94/25/3 mm	12,8 kg/m ²	4,5 kg/m ²	36 mm	47%

EXPANDED METAL MESH

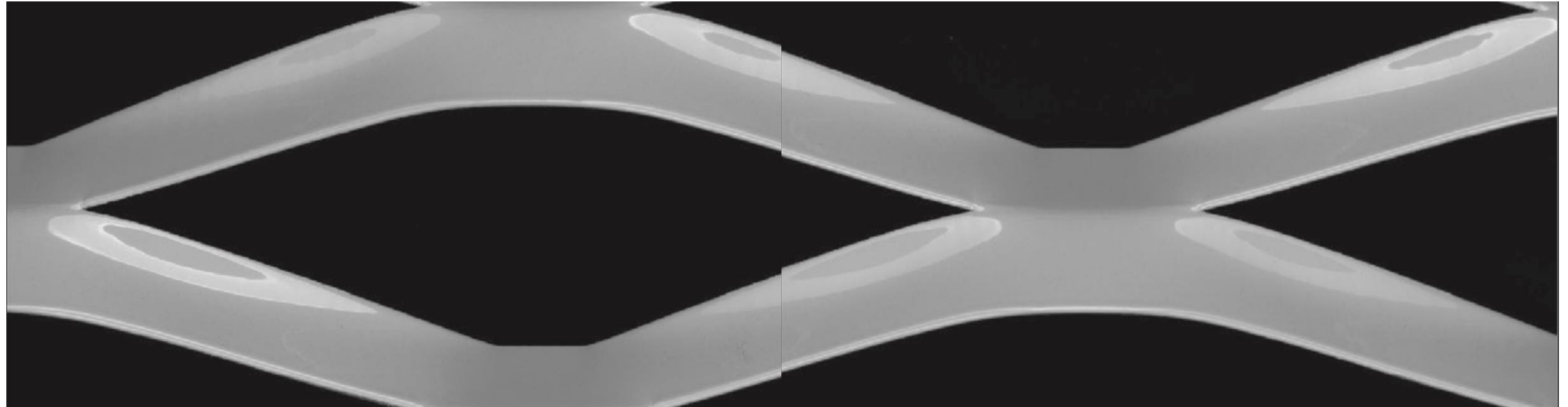
Model Darmstadt



Mesh Spec.	Weight Steel	Weight Alu.	Total Thick.	Transparency
290/110/40/1,5 mm	8,7 kg/m ²	3,1 kg/m ²	43 mm	28%
290/110/40/2 mm	11,6 kg/m ²	4,1 kg/m ²	43 mm	28%
290/110/40/3 mm	17,5 kg/m ²	6,1 kg/m ²	43 mm	28%

EXPANDED METAL MESH

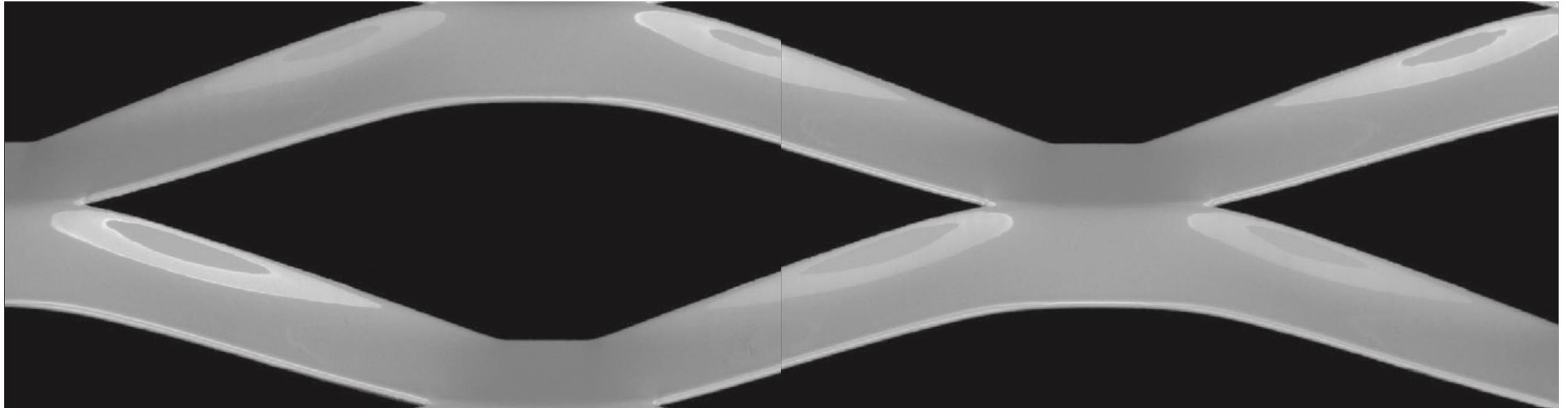
Model Hamburg



Mesh Spec.	Weight Steel	Weight Alu.	Total Thick.	Transparency
300/100/28/1,5 mm	6,7 kg/m ²	2,4 kg/m ²	41 mm	44%
300/100/28/2 mm	9,0 kg/m ²	3,1 kg/m ²	41 mm	44%
300/100/28/3 mm	13,4 kg/m ²	4,7 kg/m ²	41 mm	44%

EXPANDED METAL MESH

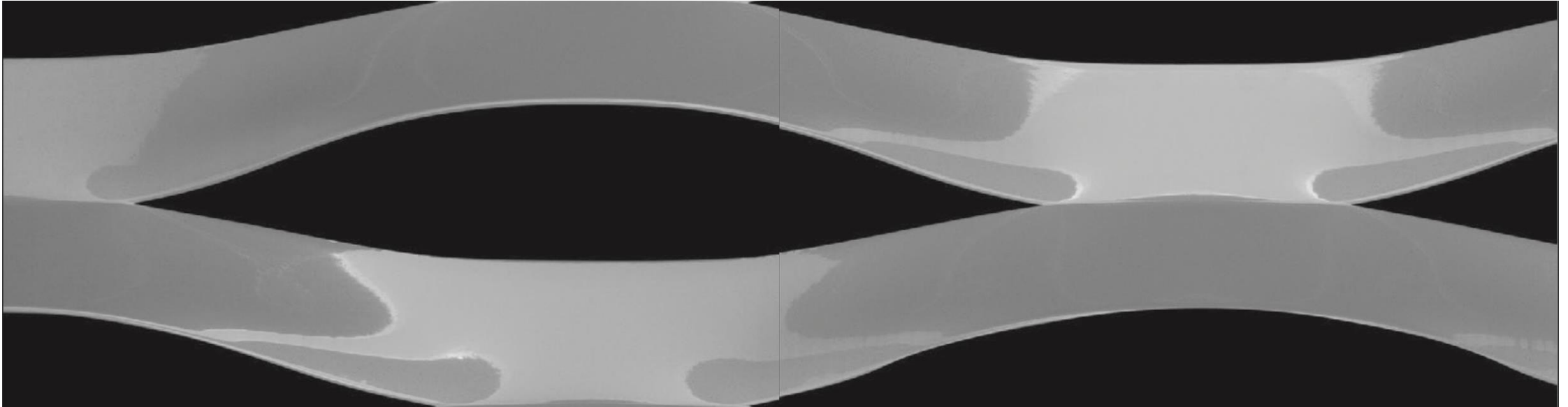
Model Bremen



Mesh Spec.	Weight Steel	Weight Alu.	Total Thick.	Transparency
300/110/30/1,5 mm	6,6 kg/m ²	2,3 kg/m ²	43 mm	46%
300/110/30/2 mm	8,7 kg/m ²	3,1 kg/m ²	43 mm	46%
300/110/30/3 mm	13,1 kg/m ²	4,6 kg/m ²	43 mm	46%

EXPANDED METAL MESH

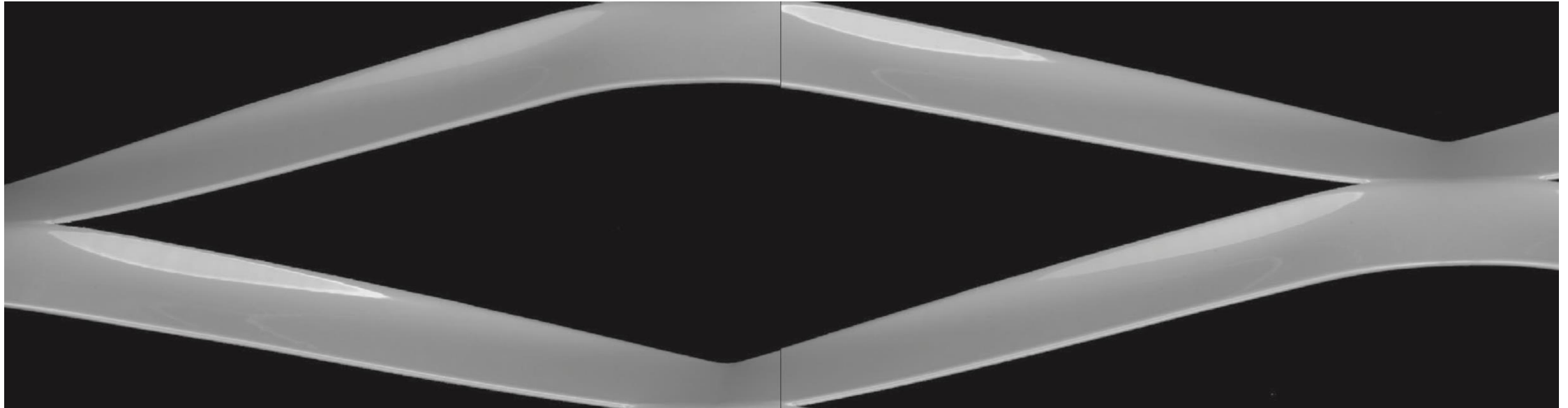
Model Mosbach



Mesh Spec.	Weight Steel	Weight Alu.	Total Thick.	Transparency
337/105/40/1,5 mm	9,2 kg/m ²	3,2 kg/m ²	45 mm	24%
337/105/40/2 mm	12,2 kg/m ²	4,3 kg/m ²	45 mm	24%
337/105/40/3 mm	18,3 kg/m ²	6,4 kg/m ²	45 mm	24%

EXPANDED METAL MESH

Model Bronn



Mesh Spec.	Weight Steel	Weight Alu.	Total Thick.	Transparency
400/133/33/1,5 mm	6,0 kg/m ²	2,1 kg/m ²	51 mm	51%
400/133/33/2 mm	7,9 kg/m ²	2,8 kg/m ²	51 mm	51%
400/133/33/3 mm	11,9 kg/m ²	4,2 kg/m ²	51 mm	51%

QUALITY CERTIFICATION



VERITAS



CERTIFICATE

OF REGISTRATION

This is to certify that the Management System of

KAPHS Middle East Building Materials Trading LLC

Office 1701, Prime Business Center A, Jumeirah Village Circle (JVC), District 13, Dubai, United Arab Emirates.

has been assessed and registered by Veritas System Quality Certificates as conforming to the requirements of

ISO 9001:2015

Quality Management System

The Quality Management System is applicable to:

Building & Construction Materials Trading

IAF/EA-NACE Code: 29-46.63

Certificate No : VSQC099-421231032

Initial Certificate Date : 16-09-2023

Surveillance due date / Certificate expiry date: 15-09-2025

Re-certification due date: 15-09-2026

Note: Validity of this certificate is subject to successful completion of each annual surveillance audit on or before due date, In case surveillance audit is not conducted then this certificate shall be suspended/cancelled.

Authorised Signatory

**Veritas System
Quality Certificates Issuing LLC**

P.O. Box: 122982, Al Karama, Dubai,
United Arab Emirates.



This certificate remains valid while the holder maintains the management system in accordance with the standard(s) above, which will be periodically audited by Veritas System Quality Certificates Issuing LLC.

This certificate remains the property of Veritas System Quality Certificates Issuing LLC and must be returned on request. In the issuance of this certificate, Veritas System Quality Certificates Issuing LLC no liability to any party other than to the client, and then only in accordance with the agreed upon certification agreement. Validity of this certificate may be confirmed at www.veritasassurance.com, directly through QR code by using any device with correct information or email to admin@veritasassurance.com.





KAPHS Switzerland

KAPHS S.A.
CH-1820
Montreux
Switzerland
Tel: +41 79 409 6741

KAPHS Middle East

Office 1701 Tower A
Prime Business Centre
Jumeirah Village Circle, Dubai
United Arab Emirates
Tel: +971 4 554 21 45

kaphsgroup.com

sales@kaphsgroup.com