



KAPHS

M E E T I N G E X P E C T A T I O N S

INDEX





INDEX

- 4. About KAPHS
- 6. Product Description
- 7. Applications
- 8. Glass Surfaces
- 12. Fixing Systems
- 13. Project References
- 31. Quality Certification

ABOUT KAPHS

KAPHS is a Swiss Company founded in 2003 by Mr. Anil Sareen.

Our family-owned operation prides itself in specializing in the engineering, manufacturing and supply of high-end Metal & Glass products for Façade application as well as Interior Design purposes.

With a focus on the Middle-Eastern market and its requirements, **KAPHS** has built a diversified offering of Architectural Products in line with the region's evolving demands and technology.

Thanks to our extensive experience working with Architects, Interior Designers and Contractors, we aim to always offer our customers the most effective and appropriate solution to their needs.

KAPHS provides In-House Engineering throughout the life of a project until completion to ensure the utmost satisfaction to our clients.

Our trusted partnerships with European Manufacturers, whom we have represented for over two decades in the Middle-Eastern region has enabled us to accomplish a remarkable portfolio of landmark projects across the Gulf countries.

As a result of our local fabrication abilities, **KAPHS** offers ready-to-install material to support our customers.



CHANNEL GLASS





CHANNEL GLASS

Product Description

Lamberts LINIT Channel Glass is a versatile architectural glass product known for its unique U-shaped profile, making it ideal for both aesthetic and functional applications in building facades and interiors. This glass is available in lengths up to 7 meters and in various widths, offering a wide range of design possibilities. The glass can be customized with different surface textures, including options like sandblasted, solar-coated, and ceramic frit finishes, allowing for tailored aesthetic effects and performance characteristics.

This glass is particularly favored in projects that require both a modern aesthetic and practical benefits, such as enhanced natural lighting, thermal insulation, and even security applications. Its use has been recognized in various high-profile architectural projects for its ability to contribute to the overall energy efficiency and environmental sustainability of buildings.



CHANNEL GLASS

Applications

Lamberts LINIT Channel Glass is a versatile and innovative glazing solution ideal for a wide range of architectural applications. Renowned for its aesthetic appeal and functional benefits, this unique glass system is perfect for both interior and exterior projects, offering a combination of light diffusion, privacy, and energy efficiency.

Channel Glass is frequently used in facades, partition walls, skylights, and stairwells, providing a sleek and modern look while maintaining structural integrity.

The glass can be used in single or double glazing configurations, providing excellent thermal insulation and sound reduction properties. Whether you're looking to create a striking visual statement or enhance natural light in your space, Lambert LINIT Channel Glass offers a high-performance, customizable solution that meets the demands of contemporary architecture.





CHANNEL GLASS

Applications

Lamberts LINIT Channel Glass is a versatile and innovative glazing solution ideal for a wide range of architectural applications. Renowned for its aesthetic appeal and functional benefits, this unique glass system is perfect for both interior and exterior projects, offering a combination of light diffusion, privacy, and energy efficiency.

Channel Glass is frequently used in facades, partition walls, skylights, and stairwells, providing a sleek and modern look while maintaining structural integrity.

The glass can be used in single or double glazing configurations, providing excellent thermal insulation and sound reduction properties. Whether you're looking to create a striking visual statement or enhance natural light in your space, Lambert LINIT Channel Glass offers a high-performance, customizable solution that meets the demands of contemporary architecture.

CHANNEL GLASS

Glass Surfaces



504



Clarissimo



Cord



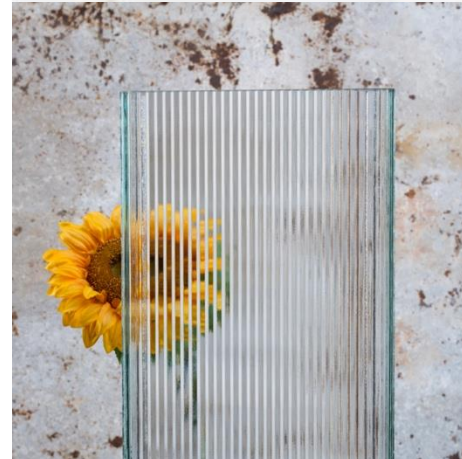
Magico



Ice



Moiré



Prismasolar



Solar

CHANNEL GLASS

Glass Surfaces / Sandblasting



CHANNEL GLASS

Glass Surfaces / Color Enameled



Clarissimo



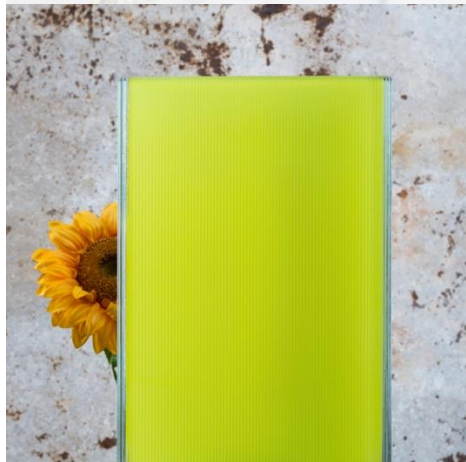
Clarissimo Blue



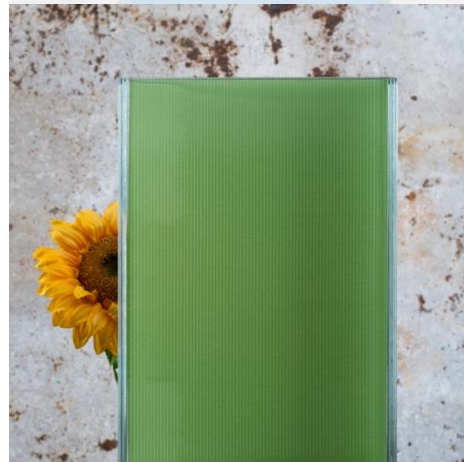
Clarissimo Red



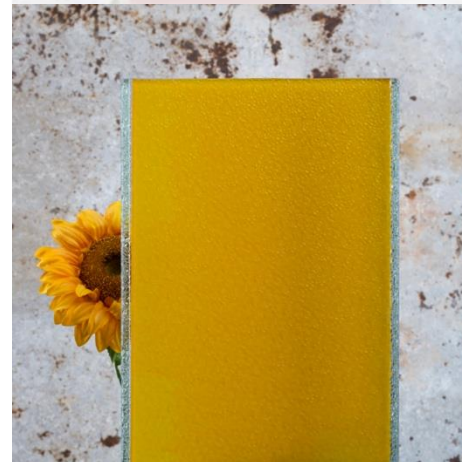
Clarissimo Silver



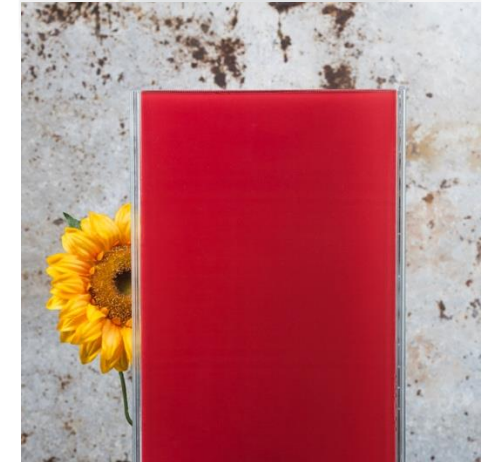
Cord Yellow



Cord Green



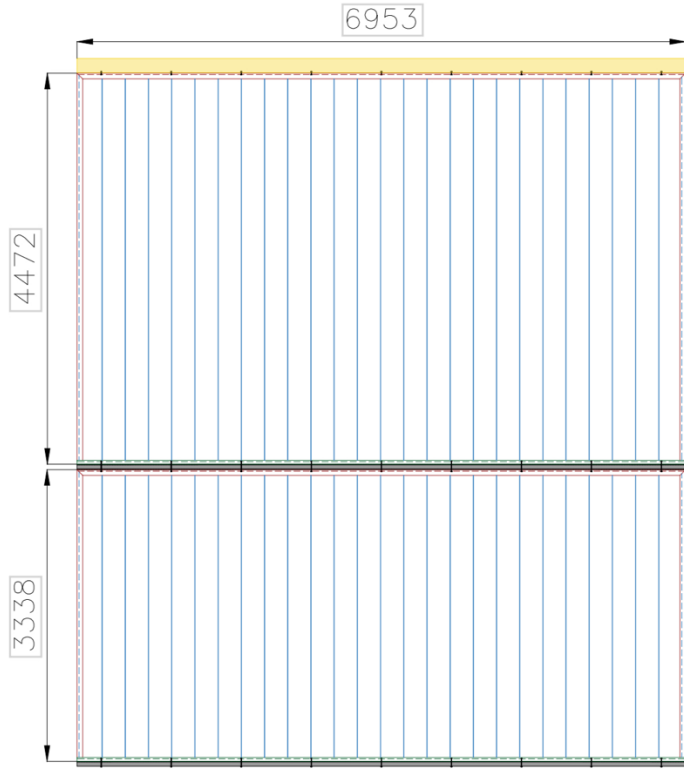
Ice Orange



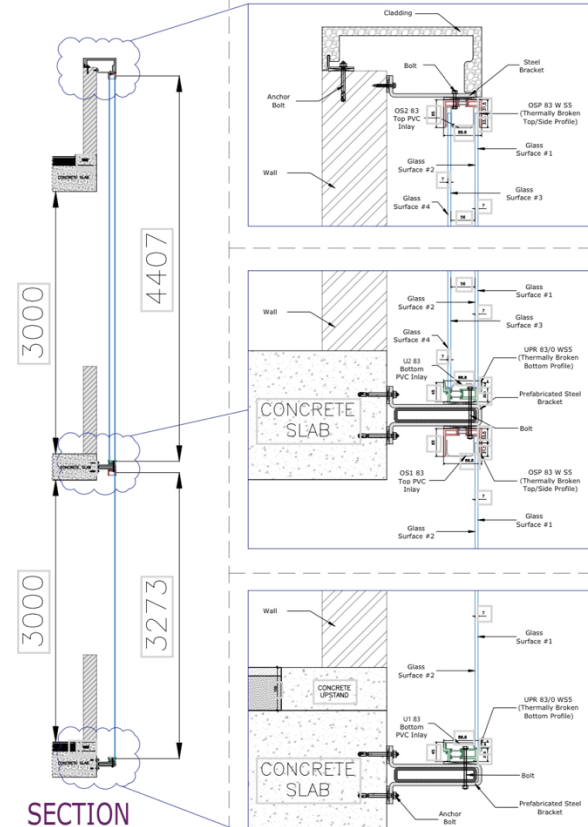
Solar Red

CHANNEL GLASS

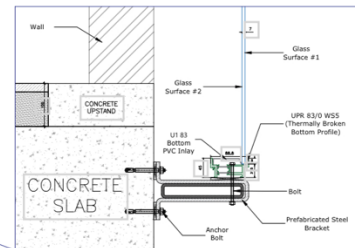
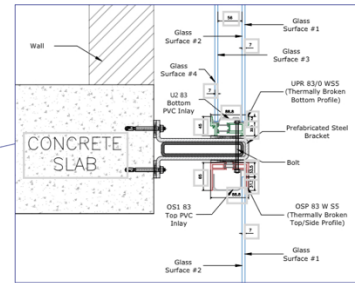
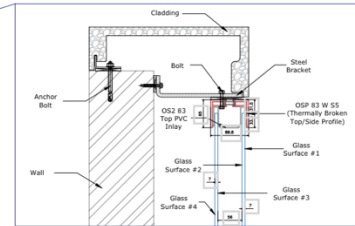
Fixing Systems



ELEVATION



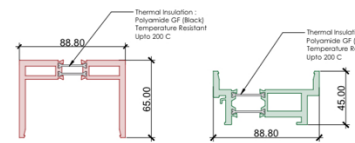
SECTION



DOUBLE GLAZING PLAN

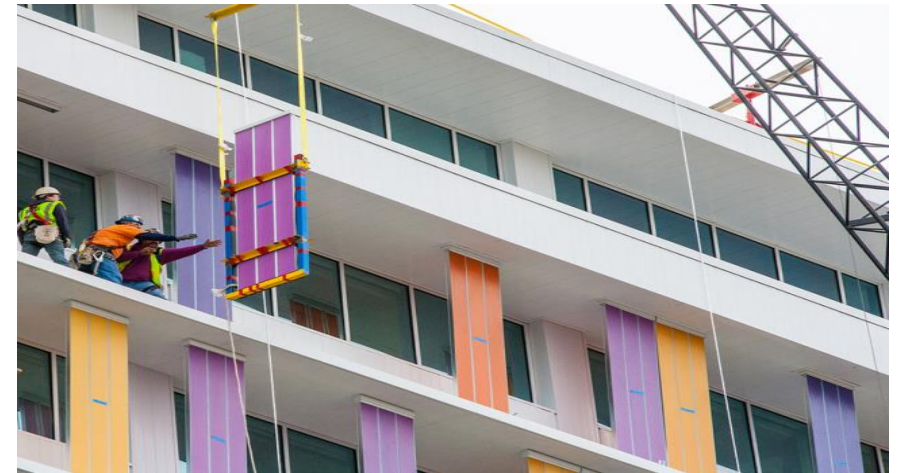


SINGLE GLAZING PLAN



OSP 83 WS5
Top / Side Profile

UPR 83/0 WS5
Bottom Profile





DIFC Gate Avenue

The Lamberts LINIT Channel Glass, supplied by KAPHS for the DIFC Gate Avenue project in Dubai, serves as a significant architectural feature, enhancing the aesthetic and functional quality of the space. The glass type used was Cord P50/80/7 in low iron with a translucent L1 coating, which contributes to its clear and bright appearance. Additionally, the glass is backlit, which not only improves visibility but also adds a dynamic, illuminated effect, especially during the evening, creating a striking visual impact.

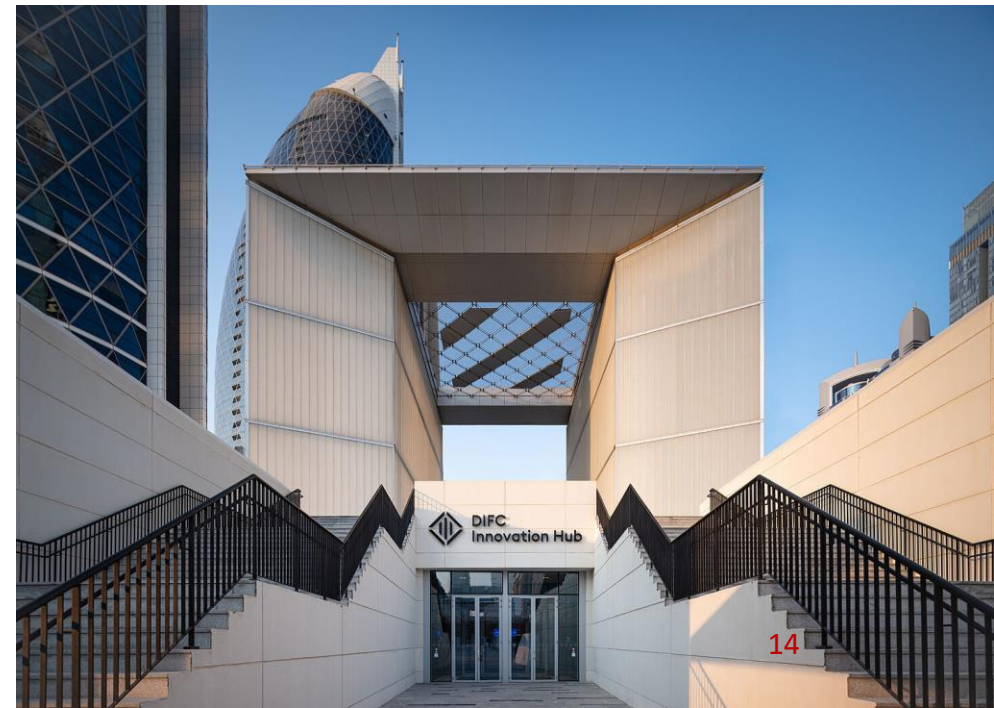
This particular glass was chosen for its high performance and aesthetic flexibility. The low iron content reduces the greenish tint typically found in standard glass, providing a more neutral and sophisticated look. The translucent L1 coating further enhances its ability to diffuse light evenly, making it ideal for creating an inviting atmosphere within the Gate Avenue.

Location: Dubai - UAE

Client: DIFC

Architect: RMJM





Bluewaters Island

For Bluewaters Island in Marina Dubai, Lamberts LINT Channel Glass, supplied by KAPHS, is used to create a striking architectural feature. The glass type, Solar P26/60/7 in low iron with a translucent L1 coating, offers a perfect blend of clarity and subtlety. The low iron glass minimizes color distortion, allowing for a purer, more vibrant transmission of light. The translucent L1 coating diffuses the light, creating a soft, ambient glow when the glass is backlit. This application not only enhances the aesthetic appeal of the space but also contributes to a sophisticated and inviting environment, making it a standout feature in the modern landscape of Bluewaters Island.

Location: Dubai - UAE

Client: Meraas

Architect: Woods Bagot







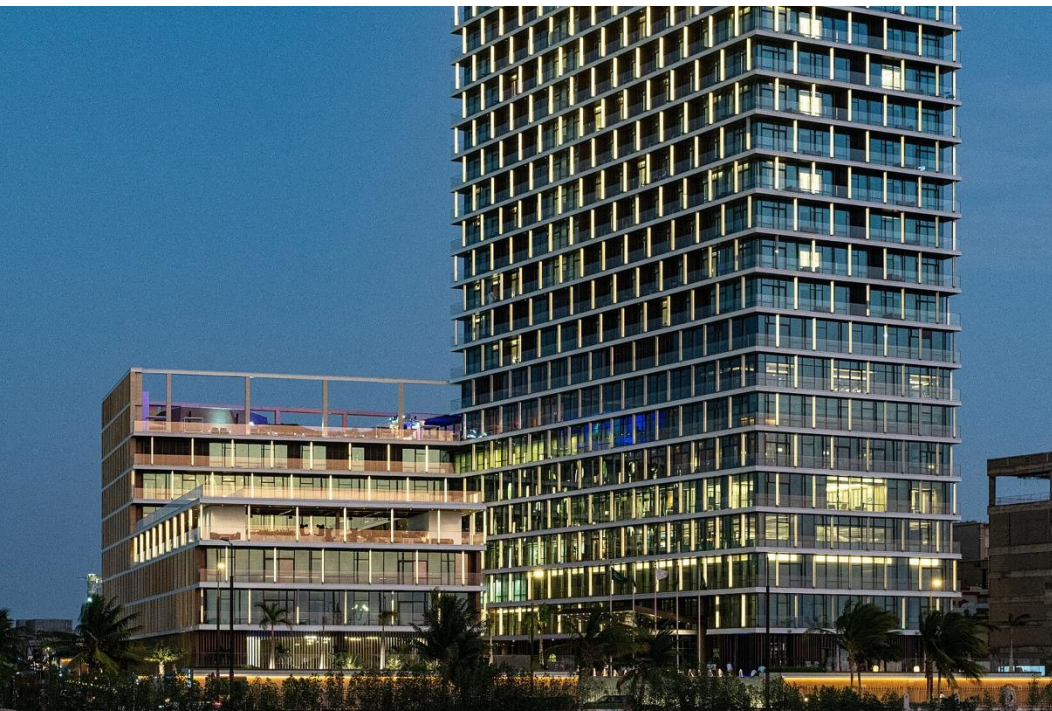
Shangri-La Hotel

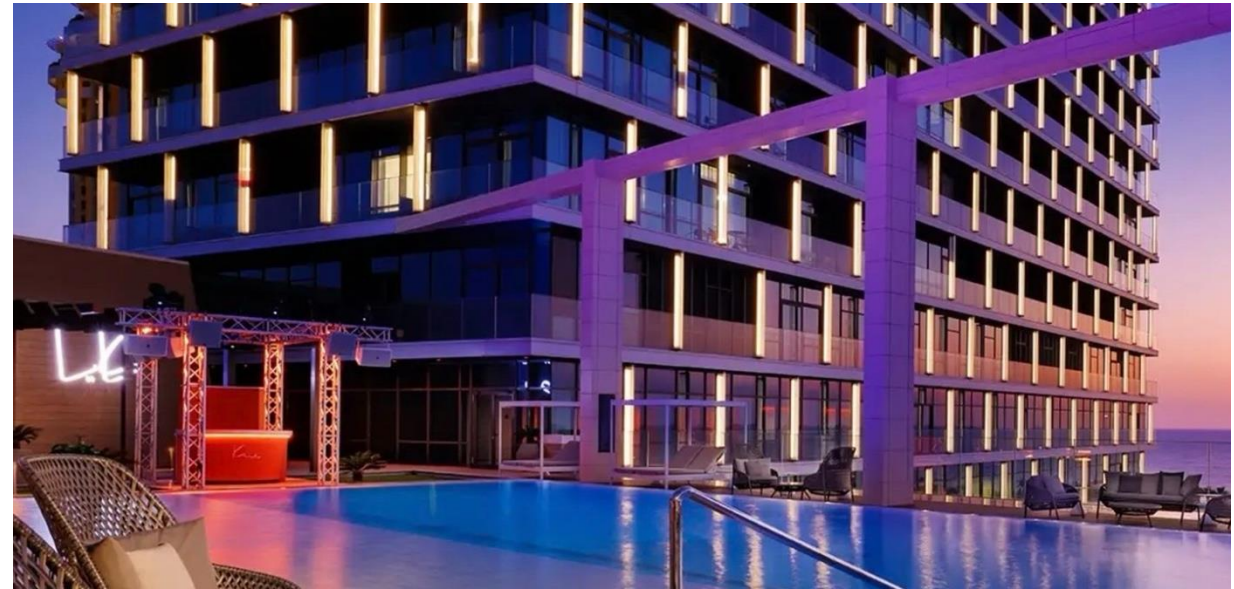
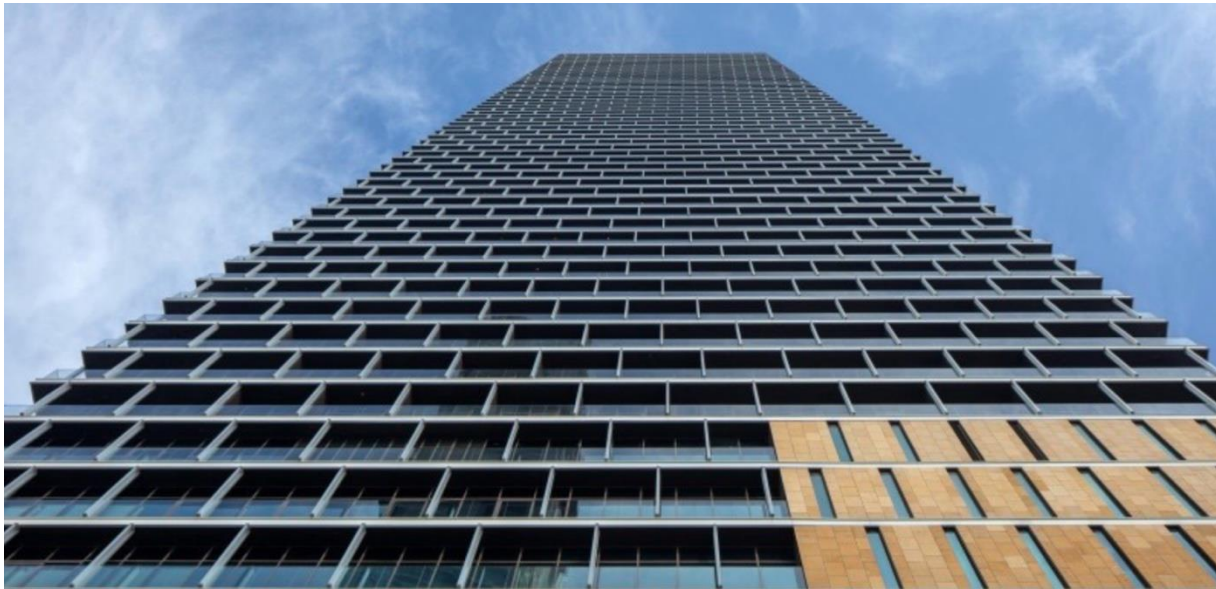
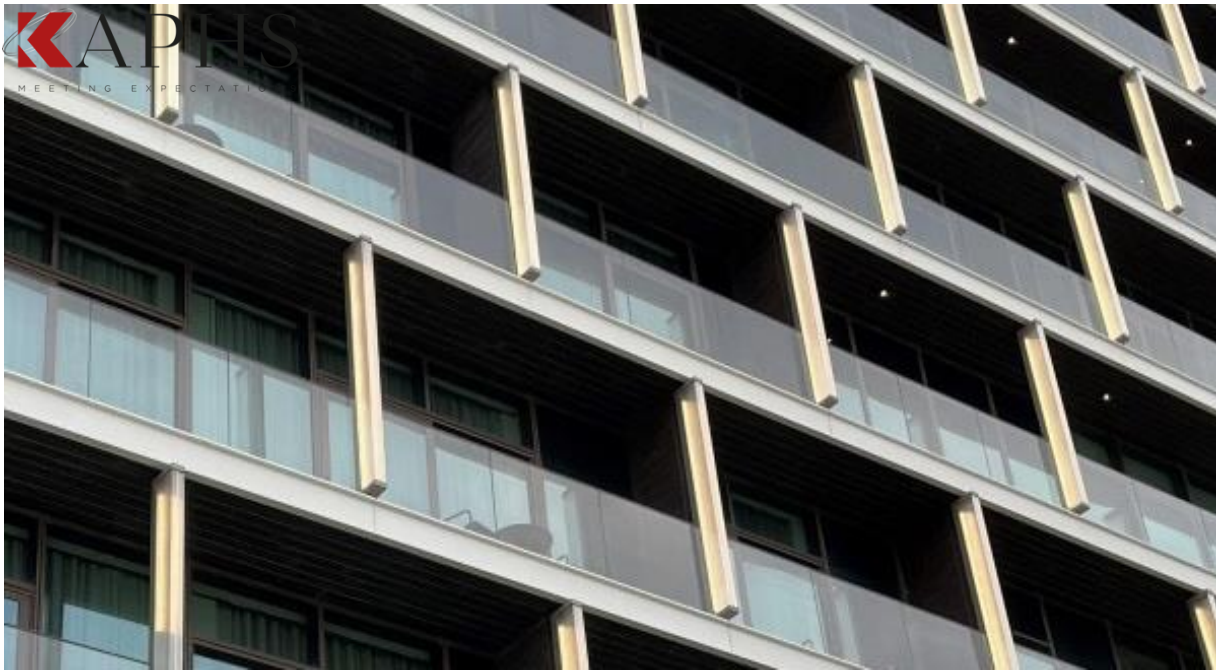
The Shangri-La Hotel in Jeddah features a unique application of Lamberts LINIT Channel Glass supplied by KAPHS. The glass used is the Cord P26/60/7 in low iron with a translucent L1 coating. This specific glass is installed as lighting elements on the building's facade, where it is mounted flange on flange, protruding from the structure. These elements are backlit, creating visually striking patterns that enhance the building's exterior at night. The hotel, designed by Perkins+Will, is located on the Jeddah Waterfront, making it a prominent luxury landmark in the city.

Location: Jeddah - KSA

Client: Assila Investments

Architect: Perkins + Will







The Beach @ JBR

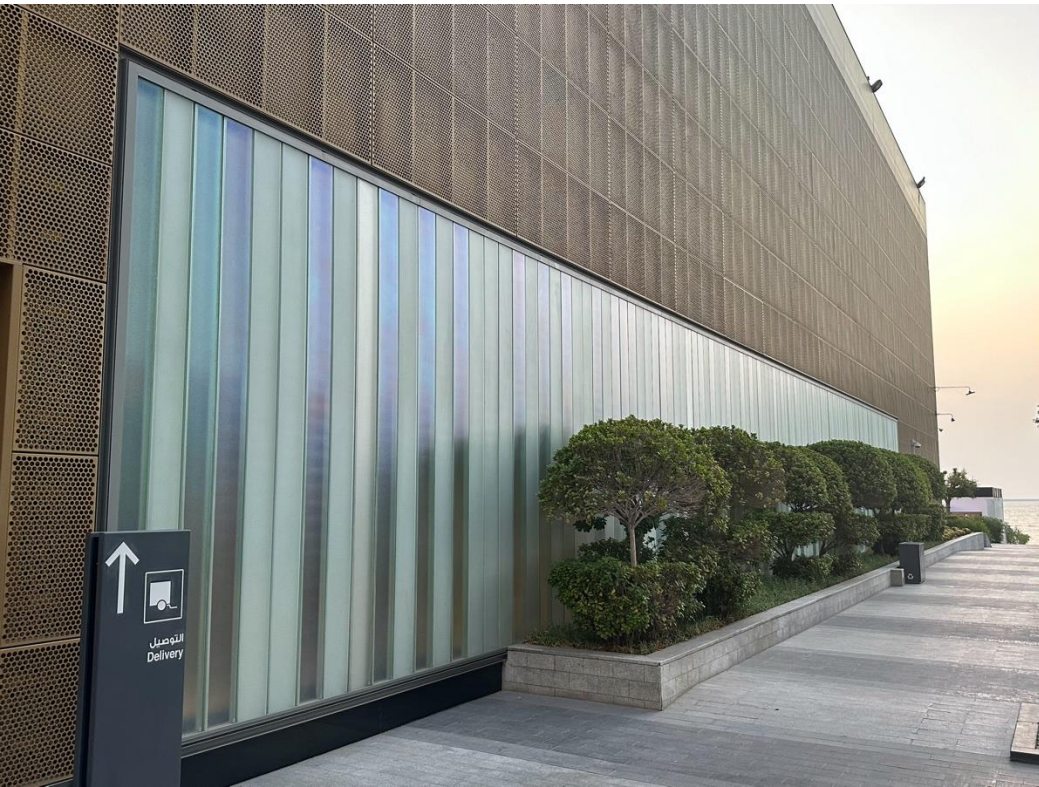
At The Beach, JBR, Lamberts LINIT Channel Glass, supplied by KAPHS, is utilized extensively to enhance the aesthetic and functional appeal of the commercial spaces within the development. The glass types used are a combination of 504 P26/60/7 with an L1 coating and 504 with a Low Emissivity (Low-E) coating.

The 504 P26/60/7 with L1 coating is selected for its ability to diffuse light softly while providing a sleek, modern look that aligns with the upscale environment of The Beach. This glass type is particularly effective in areas where a balance of privacy and natural light is desired, contributing to a pleasant and inviting atmosphere for shoppers and visitors.

Location: Dubai - UAE

Client: Dubai Properties

Architect: BSBG





BMW Flagship Motor City

For the BMW Showroom in Motor City Dubai, Lamberts LINT Channel Glass, supplied by KAPHS, plays a pivotal role in the building's architectural identity. The external glass features the 504 P26/60/7 type in standard clear glass with a translucent L1 coating. This combination ensures high transparency while subtly diffusing light, creating a clean, modern aesthetic that complements the showroom's luxury branding. Internally, the glass is treated with a Low Emissivity (Low-E) coating to enhance thermal performance, reducing heat gain and improving energy efficiency.

The glass is backlit from the interior, transforming the façade into a luminous display as night falls. The backlighting creates a soft, radiant glow, making the Channel Glass area a standout feature that draws attention and highlights the premium nature of the BMW brand.

Location: Dubai - UAE

Client: BMW AGMC

Architect: Archcorp





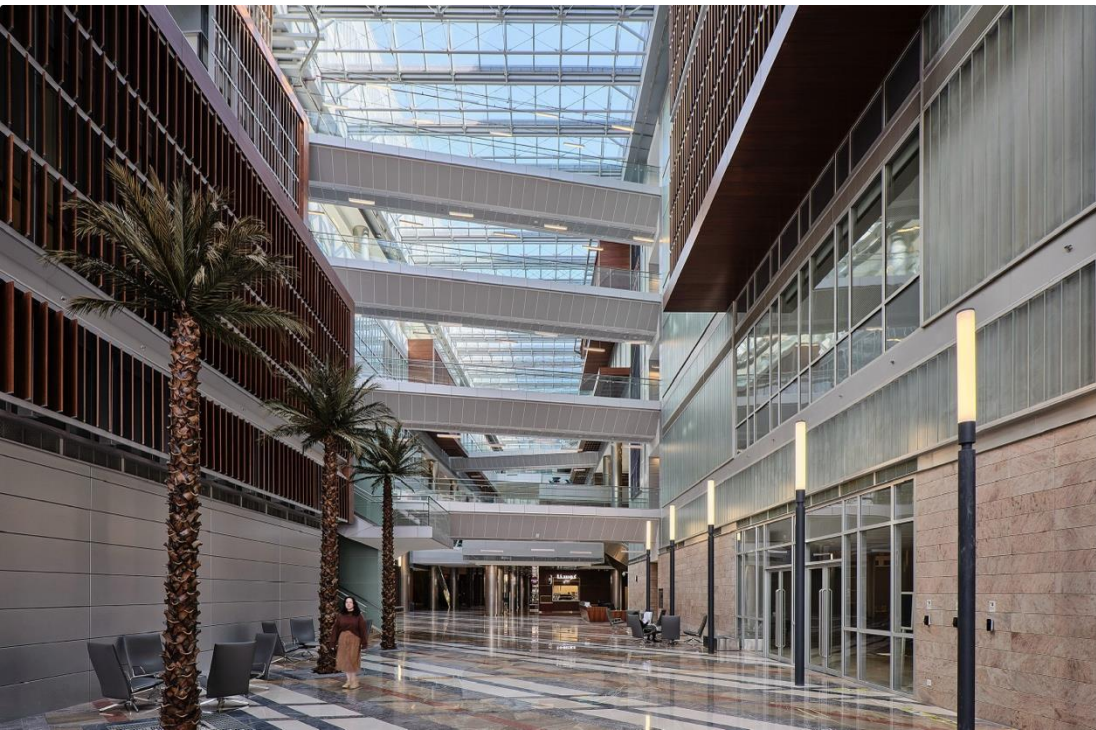
College of Engineering & Petroleum

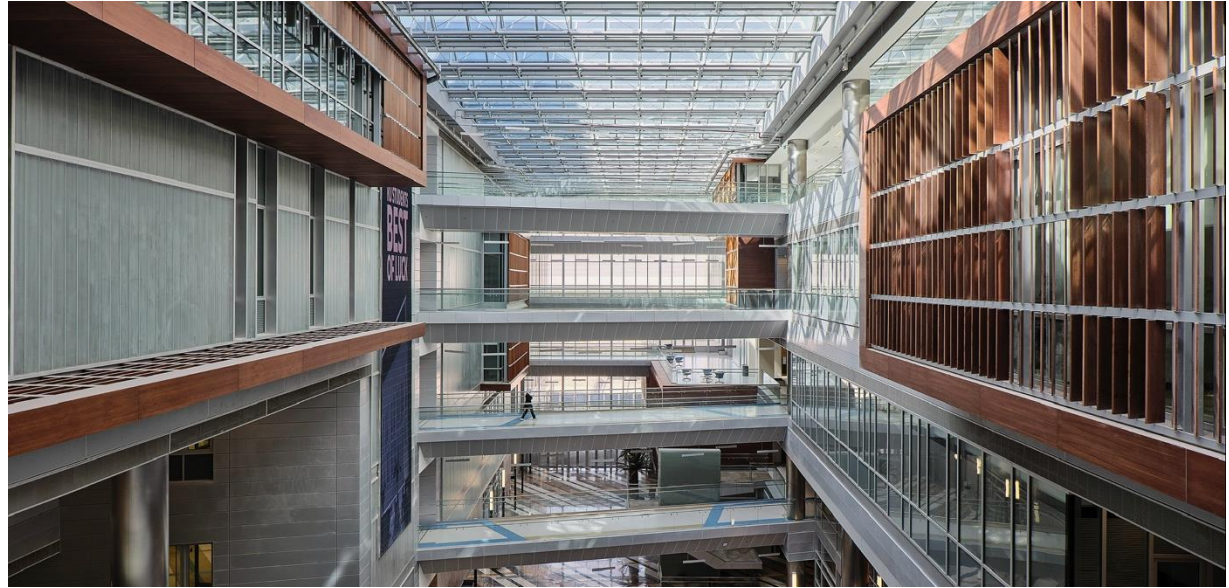
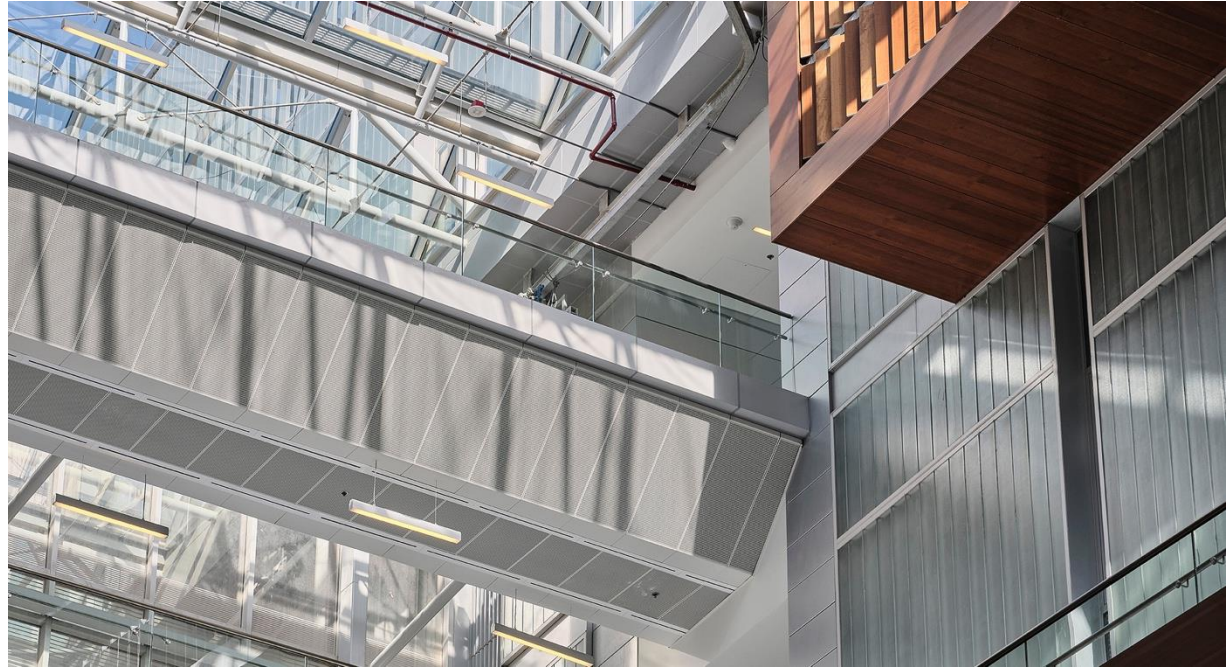
For the College of Engineering and Petroleum in Kuwait, Lamberts LINIT Channel Glass, supplied by KAPHS, was utilized extensively across eight buildings, covering over 40,000 m² for both internal and external glazing. The glass type selected was 504 P26/60/7 in standard clear glass with a translucent L1 coating for the external surfaces. This choice ensures a modern and streamlined appearance, with the translucent coating providing a delicate diffusion of light that enhances the buildings' visual appeal while reducing glare.

Location: Kuwait City - Kuwait

Client: Kuwait University

Architect: Gulf Consult





Cleveland Clinic

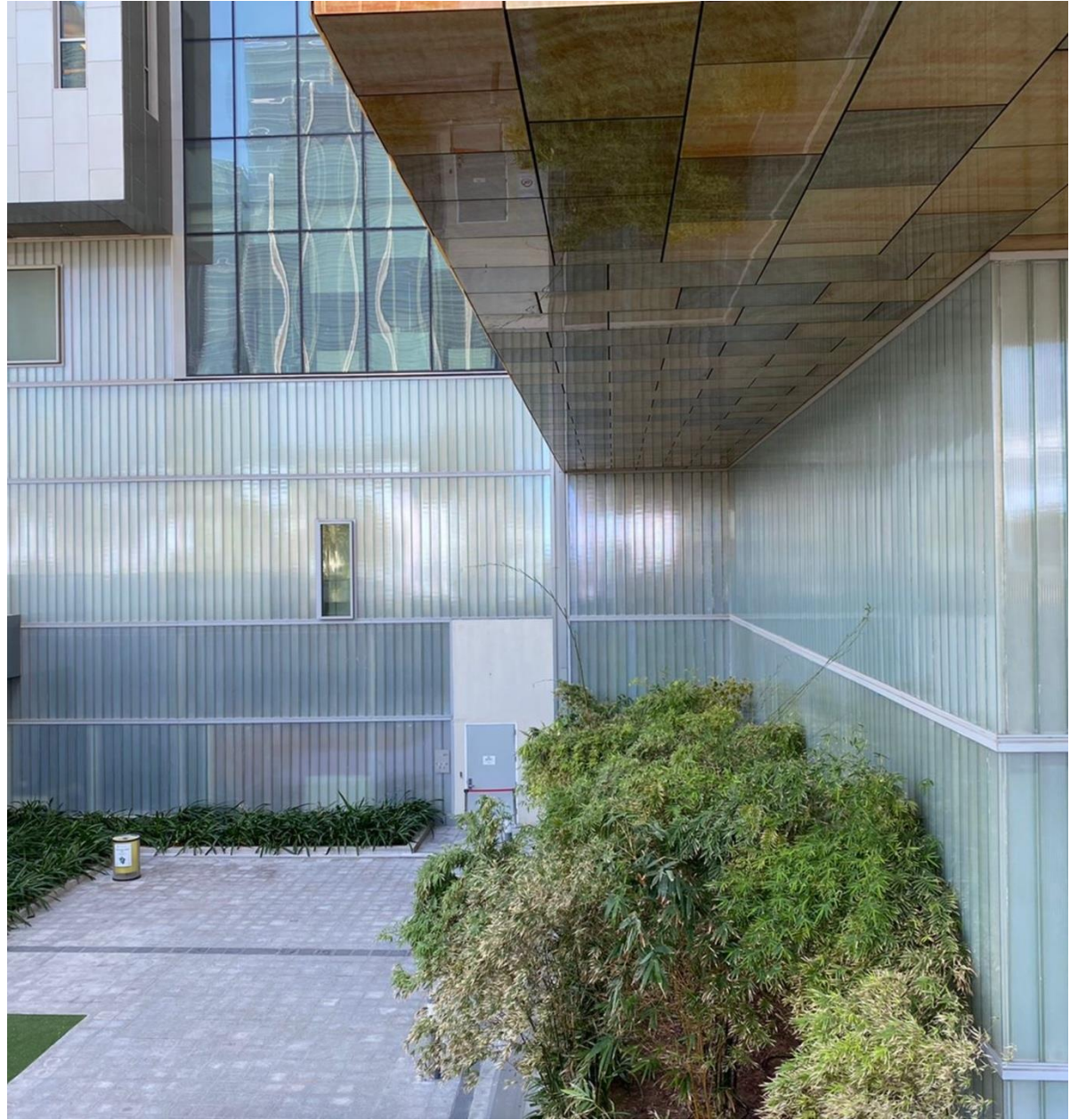
For the Cleveland Clinic in Abu Dhabi, Lamberts LINT Channel Glass, supplied by KAPHS, is utilized to create an innovative and energy-efficient façade across the entire podium area. The glass type used is 504 P26/60/7 in standard clear glass with a translucent L1 coating for the external surfaces. This setup offers excellent transparency while softly diffusing light, contributing to a sleek and contemporary exterior. Internally, the glass is treated with a Low Emissivity (Low-E) coating, enhancing thermal performance by reducing heat transfer and improving energy efficiency. To further optimize the building's performance, aerogel is introduced within the air cavity of the glass system. Aerogel significantly boosts insulation, ensuring minimal heat loss and increased energy savings.

Location: Abu Dhabi - UAE

Client: Cleveland Clinic

Architect: HDR







Adidas Flagship Store Dubai Mall

For the Adidas Flagship Store in Dubai Mall, Lamberts LINIT Channel Glass, supplied by KAPHS, is used to create a distinctive and dynamic visual effect. The glass type, Primasolar P26/60/7 in low iron with a translucent L1 coating, offers both aesthetic appeal and functional performance. The low iron composition ensures high clarity and minimal green tint, while the translucent coating diffuses light gently. When backlit, the glass illuminates with a radiant glow, enhancing the store's modern and high-energy atmosphere. This application not only adds a sleek, contemporary look but also contributes to a vibrant and engaging customer experience.

Location: Dubai - UAE

Client: Adidas

Architect: Adidas





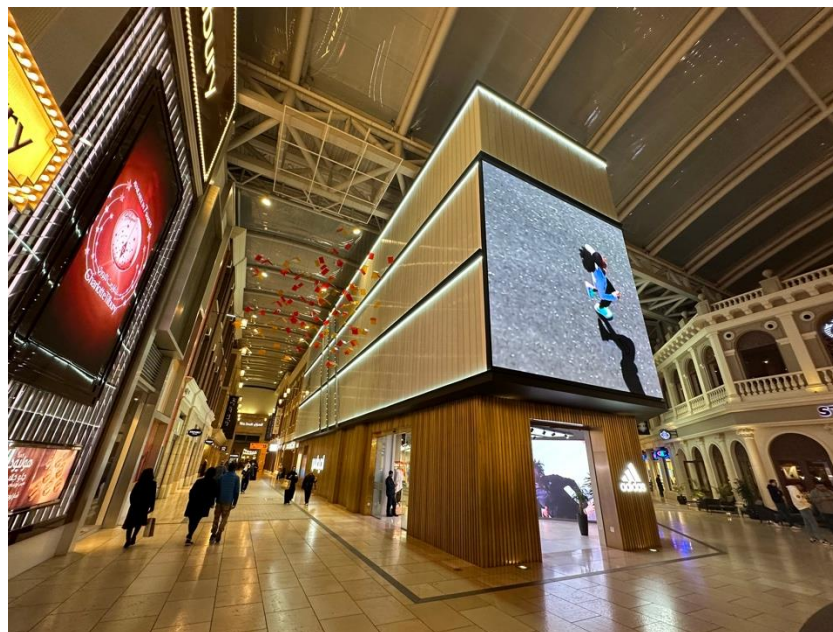
Adidas Kuwait Avenues Mall

For the Adidas Kuwait Avenues Mall Store, Lamberts LINIT Channel Glass, supplied by KAPHS, is used to create a distinctive and dynamic visual effect. The glass type, Clarissimo P26/60/7 with a translucent L1 coating, offers both aesthetic appeal and functional performance. When backlit, the glass illuminates with a radiant glow, enhancing the store's modern and high-energy atmosphere. This application not only adds a sleek, contemporary look but also contributes to a vibrant and engaging customer experience.

Location: Kuwait City - Kuwait

Client: Adidas

Architect: Adidas



PROJECT REFERENCES

Project	Location	Client	Architect	M ² Area	Application
College of Engineering	Kuwait City - Kuwait	Kuwait University	Gulf Consult	37'000	Façade, Interior Glazing
Cleveland Clinic	Abu Dhabi - UAE	Cleveland Clinic Abu Dhabi	HDR	22'205	Façade
Arzanah Medical Complex	Abu Dhabi - UAE	Medical Holding Company	WSP	1'617	Façade
The Beach at JBR	Dubai - UAE	Meraas	BSBG	1'211	Façade
DIFC Gate Avenue	Dubai - UAE	DIFC	RMJM	14'300	Façade
KITC	Kuwait City - Kuwait	KITC	KEO	1'800	Façade
Leader Sports Mall	Dubai - UAE	Leader Sports	JRHP	1'800	Façade
Adidas Avenues Mall	Kuwait City - Kuwait	Adidas	Adidas Europe	400	Façade
Adidas Dubai Mall	Dubai - UAE	Adidas	Adidas Europe	200	Interior Glazing
Adidas Dubai Hills Mall	Dubai - UAE	Adidas	Adidas Europe	80	Interior Glazing
Abdul Latif Villa	Khartoum - Sudan	Private Owner	Vision Interior	55	Façade
Dow Kaust	Jeddah - KSA	Dow Kaust	HOK	2'300	Façade
Bluewaters Island	Dubai - UAE	Meraas	Woods Bagot	7'504	Façade

PROJECT REFERENCES

Project	Location	Client	Architect	M ² Area	Application
BMW Showroom Motor City	Dubai - UAE	AGMC	Archcorp	2'000	Façade
BMW Showroom Sheikh Zayed	Dubai - UAE	AGMC	ATI	560	Façade
Shangri-La Hotel	Jeddah - KSA	Assila Investments	Perkins + Will	1'800	Glass Fins
Sabic Headquarter	Jubail - KSA	Sabic	Henning Larsen	6'500	Façade
Said Dal 1923	Dubai - UAE	Said Dal 1923	Fabrizio De Mauro	300	Façade
Private Villa Abu Dhabi	Abu Dhabi - UAE	Private Owner		78	Façade
Ahmadi Police HQ	Kuwait City - Kuwait	Ministry of Public Works	SSH	436	Façade
Sheikha Fatima Park	Abu Dhabi - UAE	Abu Dhabi Municipality	Benoy	2'300	Exterior Glazing
Private Villa Jumeirah	Dubai - UAE	Palace Group	Palace Group	125	MEP Cladding

QUALITY CERTIFICATION



VERITAS

CERTIFICATE

OF REGISTRATION

This is to certify that the Management System of

KAPHS Middle East Building Materials Trading LLC

Office 1701, Prime Business Center A, Jumeirah Village Circle (JVC), District 13, Dubai, United Arab Emirates.

has been assessed and registered by Veritas System Quality Certificates as conforming to the requirements of

ISO 9001:2015

Quality Management System

The Quality Management System is applicable to:

Building & Construction Materials Trading

IAF/EA-NACE Code: 29-46.63

Certificate No : VSQC099-421231032

Initial Certificate Date : 16-09-2023

Surveillance due date / Certificate expiry date: 15-09-2025

Re-certification due date: 15-09-2026

Note: Validity of this certificate is subject to successful completion of each annual surveillance audit on or before due date, in case surveillance audit is not conducted then this certificate shall be suspended/cancelled.



Authorised Signatory

**Veritas System
Quality Certificates Issuing LLC**

P.O. Box: 122982, Al Karama, Dubai,
United Arab Emirates.



This certificate remains valid while the holder maintains the management system in accordance with the standard(s) above, which will be periodically audited by Veritas System Quality Certificates Issuing LLC.

This certificate remains the property of Veritas System Quality Certificates Issuing LLC and must be returned on request. In the issuance of this certificate, Veritas System Quality Certificates Issuing LLC no liability to any party other than to the client, and then only in accordance with the agreed upon certification agreement. Validity of this certificate may be confirmed at www.veritasassurance.com, directly through QR code by using any device with correct information or email to admin@veritasassurance.com.

Issue No.: 01





KAPHS Switzerland

KAPHS S.A.
CH-1820
Montreux
Switzerland
Tel: +41 79 409 6741

KAPHS Middle East

Office 1701 Tower A
Prime Business Centre
Jumeirah Village Circle, Dubai
United Arab Emirates
Tel: +971 4 554 21 45

kaphsgroup.com

sales@kaphsgroup.com