

**MAX. SELECTION MAX. FORMAT**



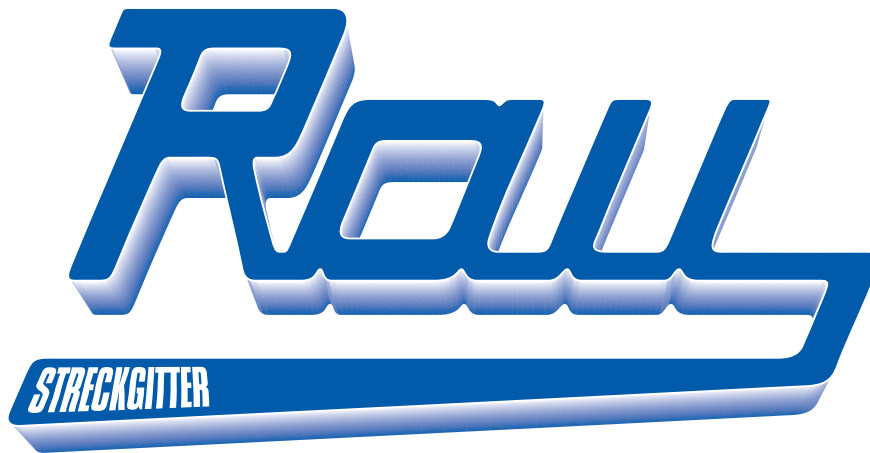
# CONTENTS



About us	1
General	2
Micro mesh	4
Small mesh	5
Medium mesh	10
Large mesh	13
Wide-strand mesh	18
Round mesh	27
Long-bond mesh	28
Square mesh	31
Honeycomb mesh	32
Options for further processing	33

MAX. SELECTION MAX. FORMAT

## ABOUT US



We have manufactured a wide variety of expanded metal mesh sheets for the most diverse applications for over 60 years. Our years of experience enable us to complete even large production runs very flexibly and within a short time frame.

For our customers we routinely expand all suitable materials such as sheet steel, aluminium, stainless steel, brass, copper and even precious metals like gold and silver.

A diverse range of processes is available for the various types of surface finish such as anodizing (electric oxidation of aluminium), powder coating, hot-dip galvanizing and zinc-electroplating. For powder coating, we offer not only the full palette of RAL colours, but other special colours as well.

Naturally we are certified in accordance with DIN EN ISO.



MAX. SELECTION MAX. FORMAT

# GENERAL



## WE PRODUCE FOR YOU:

**Expanded metal mesh sheets** in material thicknesses of 0.10 – 5 mm for sheet steel and aluminium. Up to 3 mm for stainless steel.

**Expanded metal mesh sheets** from mild steel, sendzimizid, zinc electroplated or hot-dip galvanized.

**Expanded metal mesh sheets** from rust, acid and heat resistant steels.

**Expanded metal mesh sheets** from aluminium, untreated or anodized, in different colours.

## WE PRODUCE FOR YOU:

**Expanded metal mesh sheets** from precious metals.

**Expanded metal mesh sheets**, powder coated in RAL colours.

**Special coatings upon request.**

**Expanded metal mesh sheets** in circular shapes, formed shapes or customized to drawings.

## WHAT YOU SHOULD CONSIDER AND SPECIFY WHEN ORDERING RAU EXPANDED METAL MESH PRODUCTS

Our expanded mesh codes consisting of:

**Mesh length**                                    **l**  
**Mesh width**                                    **b**  
**Strand width**                                   **c**  
**Strand thickness/**                           **s**  
**Material thickness**  
**Material grade**

Please take particular care when stating these important dimensions:

**Sheet width** (panel width)  
**Sheet length** (panel length)

**Item-Nr.2810/2510**

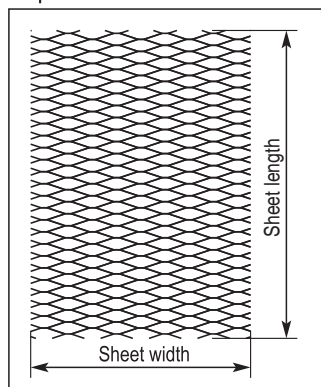
28 x 10    x    2,5 x 1,0 mm  
 l    b            c            s

$$\text{Expansion factor} = \frac{\text{Mesh wide } b}{2 \times \text{bond width } c}$$

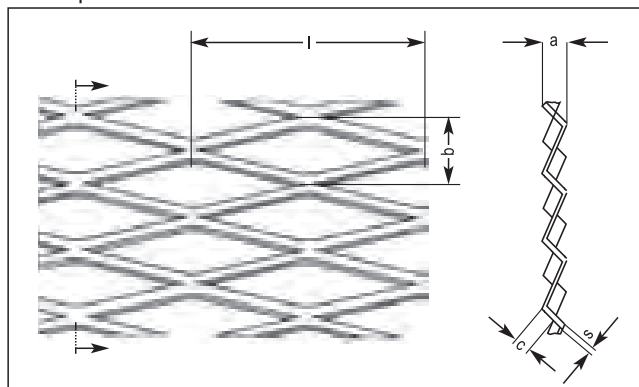
$$\frac{\text{Expansion factor} - 1}{\text{Expansion factor}} \times 100 = \frac{\text{free Area}}{\text{Area}}$$

Differences in dimension b in the item number are dependent on the dimension c given

Expanded metal



Description of mesh





# GENERAL



FOR ORDERS AND PRICE INQUIRIES PLEASE STATE THE FOLLOWING:

<b>Mesh length</b>	<b>Sheet length</b>
<b>Mesh width</b>	<b>Sheet width</b>
<b>Bond width</b>	<b>Number of sheets/ required volume</b>
<b>Strand thickness</b>	<b>Type of Material/ quality</b>

Our expanded metal sheets are flat packed for shipping, as far as their dimensions permit.

WE SUPPLY EXPANDED METAL SHEETS WITH THE FOLLOWING TOLERANCES:

Conventional sheet sizes: Width tolerance + 5%, length tolerances + 5%\_

### Plane flatness:

The expanded metal sheets are considered flat if, when laid on a flat surface with the curvature facing upwards, the greatest distance of the metal away from that surface does not exceed 50 mm. In the case of heat-resistant metals, the distance may be up to 100 mm.

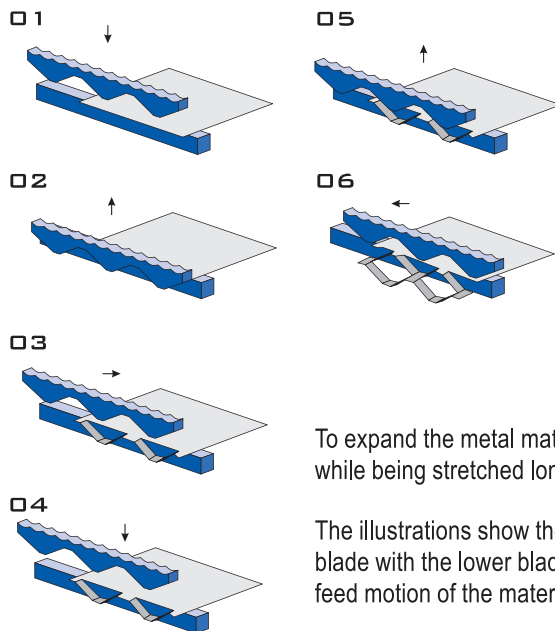
### Saber effect:

Measure of the length deflection an expanded metal sheet may have as a consequence of the expanding process.

Blank cut tolerances are in accordance with ISO 2768, coarse.

Tolerances deviating greatly from ISO 2768, coarse, and tolerances for BLG sheets (with closed, bond-sheared edges) available on request.

## PRODUCTION PROCESS



To expand the metal material, it is cut transversely while being stretched longitudinally.

The illustrations show the movement of the upper blade with the lower blade rigid, and the associated feed motion of the material being expanded.

# MICRO MESH



All meshes are available in different material thicknesses (s) and bond widths (c).

Item-Nr.:	l	b	c	s
32/0505	3	1,7	0,5	0,5 mm
<b>Dimensions c and s are variable e.g.:</b>				
32/0705	3	1,8	0,7	0,5 mm

Maximum production width: 600 mm  
 Maximum sheet thickness: Steel 0,5 mm  
 Aluminium 0,5 mm



All meshes are available in different material thicknesses (s) and bond widths (c).

Item-Nr.:	l	b	c	s
42/0705	4	2	0,7	0,5 mm
<b>Dimensions c and s are variable e.g.:</b>				
42/1008	4	2	1	0,8 mm

Maximum production width: 600 mm  
 Maximum sheet thickness: Steel 0,8 mm  
 Aluminium 0,8 mm  
 Stainless steel 0,5 mm



All meshes are available in different material thicknesses (s) and bond widths (c).

Item-Nr.:	l	b	c	s
53/1005	5	3	1,0	0,5 mm
<b>Dimensions c and s are variable e.g.:</b>				
53/1008	5	3	1,0	0,8 mm

Maximum production width: 600 mm  
 Maximum sheet thickness: Steel 0,8 mm  
 Aluminium 0,8 mm  
 Stainless steel 0,5 mm



All meshes are available in different material thicknesses (s) and bond widths (c).

Item-Nr.:	l	b	c	s
63/1005	6	3	1,0	0,5 mm
<b>Dimensions c and s are variable e.g.:</b>				
63/1010	6	3	1,0	1,0 mm

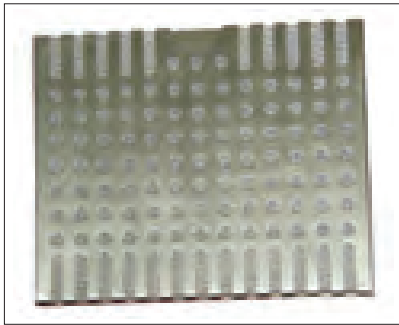
Maximum production width: 1250 mm  
 Maximum sheet thickness: Steel 1,0 mm  
 Aluminium 1,0 mm  
 Stainless steel 0,5 mm

MAX. SECTION MAX. FORMAT

## MICRO MESH



All meshes are available in different material thicknesses (s) and bond widths (c).



Item-Nr.:	l	b	c	s
63,4/0805	6	3,4	0,8	0,5 mm
<b>Dimensions c and s are variable e.g.:</b>				
63,4/1005	6	3,4	1,0	0,5 mm

**Maximum production width:** 1250 mm  
**Maximum sheet thickness:** Steel 1,0 mm  
 Aluminium 1,0 mm  
 Stainless steel 0,5 mm

## SMALL MESH



All meshes are available in different material thicknesses (s) and bond widths (c).

Item-Nr.:	l	b	c	s
74/0808	7	4	0,8	0,8 mm
<b>Dimensions c and s are variable e.g.:</b>				
74/1510	7	4	1,5	1,0 mm

**Maximum production width:** 1000 mm  
**Maximum sheet thickness:** Steel 1,0 mm  
 Aluminium 1,0 mm

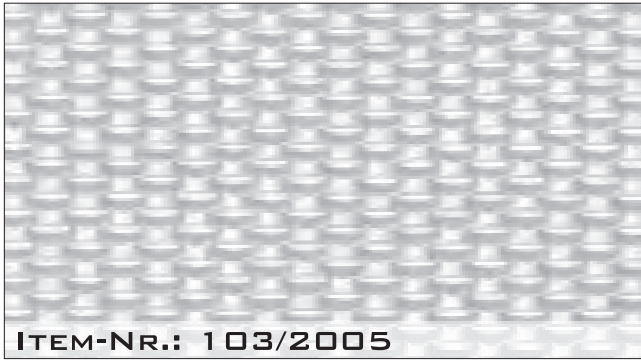


All meshes are available in different material thicknesses (s) and bond widths (c).

Item-Nr.:	l	b	c	s
91/0703	9	2,4	0,7	0,3 mm
<b>Dimensions c and s are variable e.g.:</b>				
91/0805	9	2,5	0,8	0,5 mm

**Maximum production width:** 1000 mm  
**Maximum sheet thickness:** Steel 0,8 mm  
 Aluminium 0,8 mm  
 Stainless steel 0,5 mm

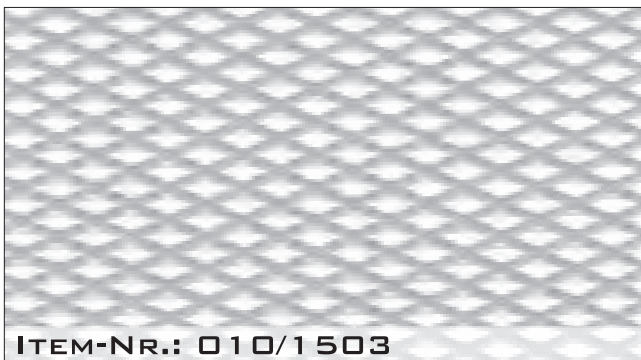
# SMALL MESH



All meshes are available in different material thicknesses (s) and bond widths (c).

Item-Nr.:	l	b	c	s
103/2005	10	4,5	2,0	0,5 mm
<b>Dimensions c and s are variable e.g.:</b>				
103/1515	10	4	1,5	1,5 mm

Maximum production width: 1000 mm  
 Maximum sheet thickness: Steel 1,5 mm  
 Aluminium 1,5 mm  
 Stainless steel 0,8 mm



All meshes are available in different material thicknesses (s) and bond widths (c).

Item-Nr.:	l	b	c	s
010/1503	10	4,5	1,5	0,3 mm
<b>Dimensions c and s are variable e.g.:</b>				
010/17515	10	5	1,75	1,5 mm

Maximum production width: 1250 mm  
 Maximum sheet thickness: Steel 1,5 mm  
 Aluminium 1,5 mm  
 Stainless steel 0,8 mm



All meshes are available in different material thicknesses (s) and bond widths (c).

Item-Nr.:	l	b	c	s
105/1510	10	5,5	1,5	1,0 mm
<b>Dimensions c and s are variable e.g.:</b>				
105/1515	10	6,0	1,5	1,5 mm

Maximum production width: 1500 mm  
 Maximum sheet thickness: Steel 1,5 mm  
 Aluminium 1,5 mm  
 Stainless steel 0,8 mm

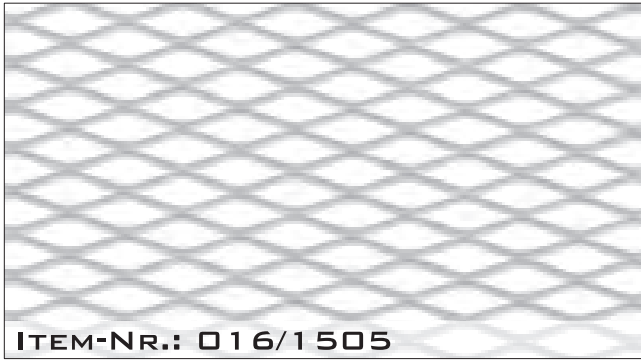


All meshes are available in different material thicknesses (s) and bond widths (c).

Item-Nr.:	l	b	c	s
136/1505	13	6	1,5	0,5 mm
<b>Dimensions c and s are variable e.g.:</b>				
136/2020	13	6	2,0	2,0 mm

Maximum production width: 1500 mm  
 Maximum sheet thickness: Steel 2,0 mm  
 Aluminium 2,0 mm  
 Stainless steel 1,5 mm

# SMALL MESH



All meshes are available in different material thicknesses (s) and bond widths (c).

Item-Nr.:	l	b	c	s
016/1505	16	6	1,5	0,5 mm
<b>Dimensions c and s are variable e.g.:</b>				
016/2020	16	6,5	2,0	2,0 mm

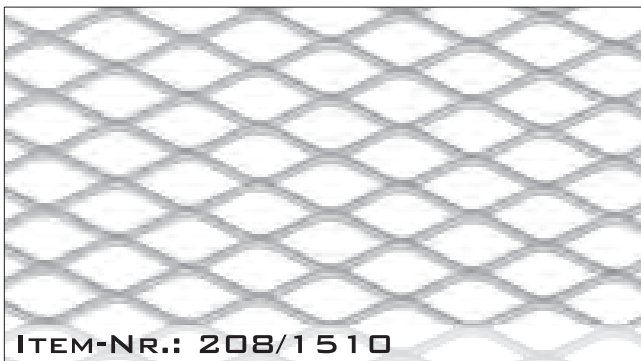
Maximum production width: 1500 mm  
 Maximum sheet thickness: Steel 2,0 mm  
 Aluminium 2,0 mm  
 Stainless steel 1,5 mm



All meshes are available in different material thicknesses (s) and bond widths (c).

Item-Nr.:	l	b	c	s
168/1505	16	7,7	1,5	0,5 mm
<b>Dimensions c and s are variable e.g.:</b>				
168/2520	16	8	2,5	2,0 mm

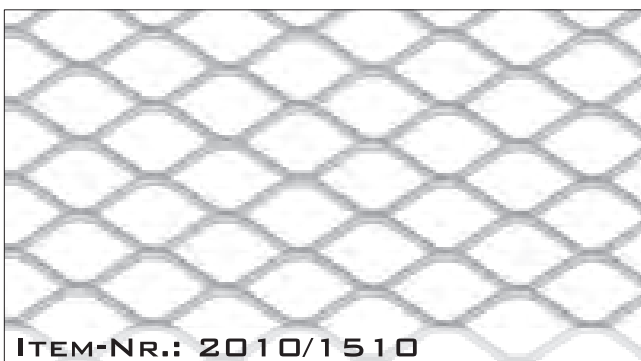
Maximum production width: 1500 mm  
 Maximum sheet thickness: Steel 2,0 mm  
 Aluminium 2,0 mm  
 Stainless steel 2,0 mm



All meshes are available in different material thicknesses (s) and bond widths (c).

Item-Nr.:	l	b	c	s
208/1510	20	8	1,5	1,0 mm
<b>Dimensions c and s are variable e.g.:</b>				
208/2520	20	8	2,5	2,0 mm

Maximum production width: 1500 mm  
 Maximum sheet thickness: Steel 2,0 mm  
 Aluminium 2,0 mm  
 Stainless steel 2,0 mm



All meshes are available in different material thicknesses (s) and bond widths (c).

Item-Nr.:	l	b	c	s
2010/1510	20	10	1,5	1,0 mm
<b>Dimensions c and s are variable e.g.:</b>				
2010/2520	20	10	2,5	2,0 mm

Maximum production width: 1500 mm  
 Maximum sheet thickness: Steel 2,0 mm  
 Aluminium 2,0 mm  
 Stainless steel 2,0 mm

MAX. SECTION MAX. FORMAT

# SMALL MESH



All meshes are available in different material thicknesses (s) and bond widths (c).

Item-Nr.:	l	b	c	s
228/1005	22	7	1,0	0,5 mm
<b>Dimensions c and s are variable e.g.:</b>				
228/2015	22	8	2,0	1,5 mm

Maximum production width: 1250 mm  
 Maximum sheet thickness: Steel 1,5 mm  
 Aluminium 1,5 mm  
 Stainless steel 1,5 mm



All meshes are available in different material thicknesses (s) and bond widths (c).

Item-Nr.:	l	b	c	s
2212/2010	22	12	2,0	1,0 mm
<b>Dimensions c and s are variable e.g.:</b>				
2212/3020	22	12	3,0	2,0 mm

Maximum production width: 1500 mm  
 Maximum sheet thickness: Steel 3,0 mm  
 Aluminium 3,0 mm  
 Stainless steel 2,0 mm



All meshes are available in different material thicknesses (s) and bond widths (c).

Item-Nr.:	l	b	c	s
028/2510	28	9	2,5	1,0 mm
<b>Dimensions c and s are variable e.g.:</b>				
028/3030	28	9	3,0	3,0 mm

Maximum production width: 2000 mm  
 Maximum sheet thickness: Steel 3,0 mm  
 Aluminium 3,0 mm  
 Stainless steel 3,0 mm



All meshes are available in different material thicknesses (s) and bond widths (c).

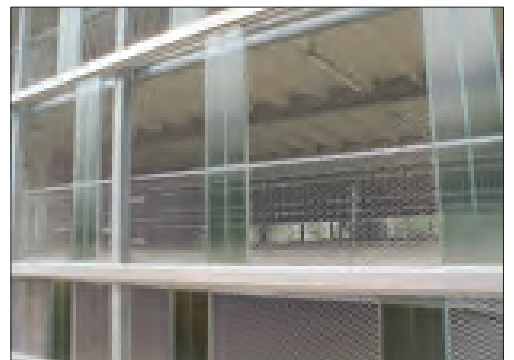
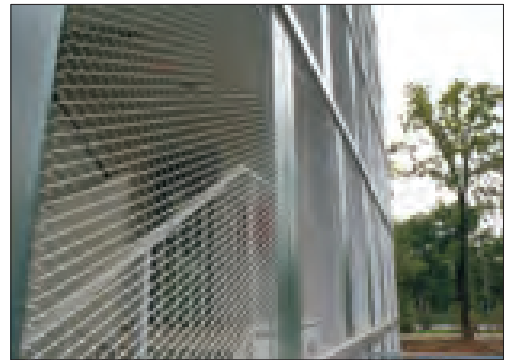
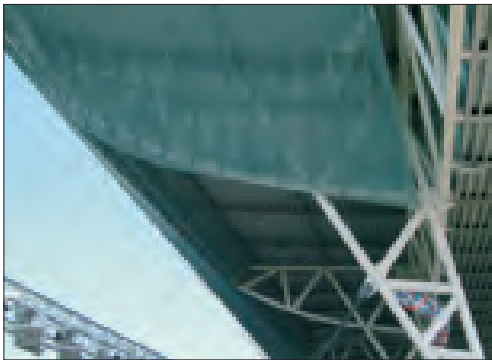
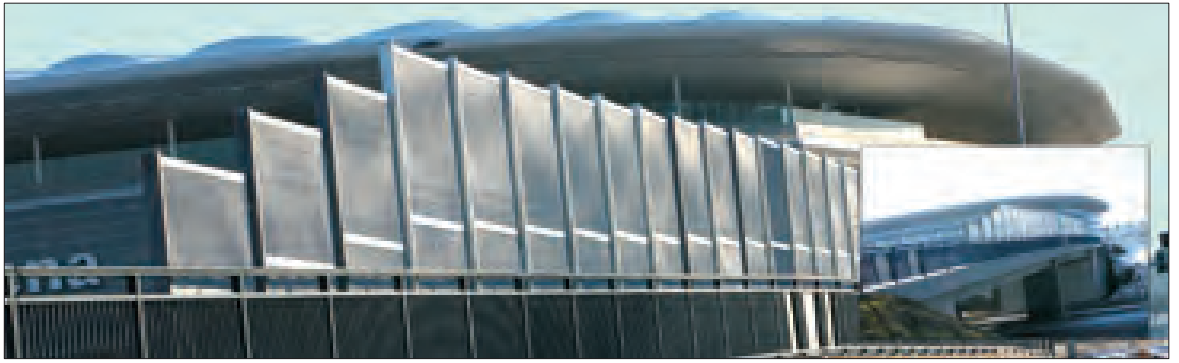
Item-Nr.:	l	b	c	s
2810/2510	28	10	2,5	1,0 mm
<b>Dimensions c and s are variable e.g.:</b>				
2810/3030	28	10	3,0	3,0 mm

Maximum production width: 2000 mm  
 Maximum sheet thickness: Steel 3,0 mm  
 Aluminium 3,0 mm  
 Stainless steel 3,0 mm

MAX. SECTION MAX. FORMAT



# USES



MAX. SELECTION MAX. FORMAT

# MEDIUM MESH



All meshes are available in different material thicknesses (s) and bond widths (c).

Item-Nr.:	l	b	c	s
2812/1515	28	12	1,5	1,5 mm
<b>Dimensions c and s are variable e.g.:</b>				
2812/3030	28	12	3,0	3,0 mm

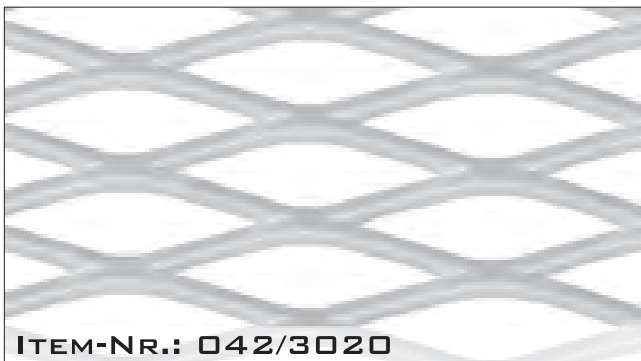
Maximum production width: 2000 mm  
 Maximum sheet thickness: Steel 3,0 mm  
 Aluminium 3,0 mm  
 Stainless steel 3,0 mm



All meshes are available in different material thicknesses (s) and bond widths (c).

Item-Nr.:	l	b	c	s
3918/1510	39	18	1,5	1,0 mm
<b>Dimensions c and s are variable e.g.:</b>				
3918/4040	39	18	4,0	4,0 mm

Maximum production width: 2500 mm  
 Maximum sheet thickness: Steel 4,0 mm  
 Aluminium 4,0 mm  
 Stainless steel 3,0 mm



All meshes are available in different material thicknesses (s) and bond widths (c).

Item-Nr.:	l	b	c	s
042/3020	42	12,5	3,0	2,0 mm
<b>Dimensions c and s are variable e.g.:</b>				
042/4040	42	13	4,0	4,0 mm

Maximum production width: 2500 mm  
 Maximum sheet thickness: Steel 4,0 mm  
 Aluminium 4,0 mm  
 Stainless steel 3,0 mm



All meshes are available in different material thicknesses (s) and bond widths (c).

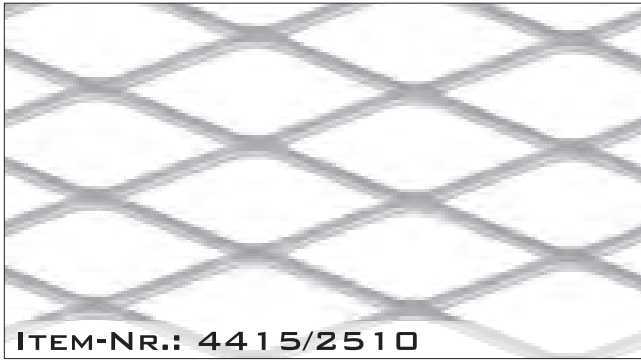
Item-Nr.:	l	b	c	s
4412/2510	44	12	2,5	1,0 mm
<b>Dimensions c and s are variable e.g.:</b>				
4412/4540	44	13	4,5	4,0 mm

Maximum production width: 2500 mm  
 Maximum sheet thickness: Steel 4,0 mm  
 Aluminium 4,0 mm  
 Stainless steel 3,0 mm

MAX. SECTION MAX. FORMAT



# MEDIUM MESH



All meshes are available in different material thicknesses (s) and bond widths (c).

Item-Nr.:	l	b	c	s
4415/2510	44	15	2,5	1,0 mm
<b>Dimensions c and s are variable e.g.:</b>				
4415/4040	44	15	4,0	4,0 mm

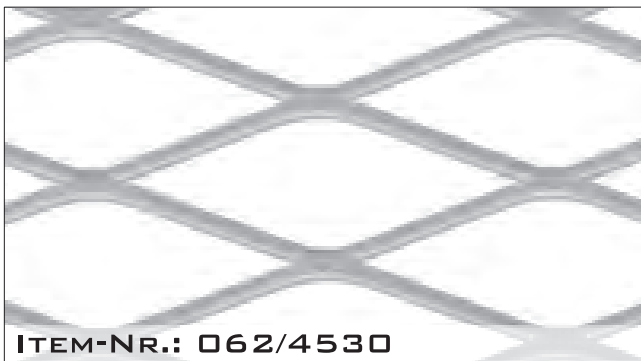
Maximum production width: 2500 mm  
 Maximum sheet thickness: Steel 4,0 mm  
 Aluminium 4,0 mm  
 Stainless steel 3,0 mm



All meshes are available in different material thicknesses (s) and bond widths (c).

Item-Nr.:	l	b	c	s
5224/3515	52	24	3,5	1,5 mm
<b>Dimensions c and s are variable e.g.:</b>				
5224/5040	52	24	5,0	4,0 mm

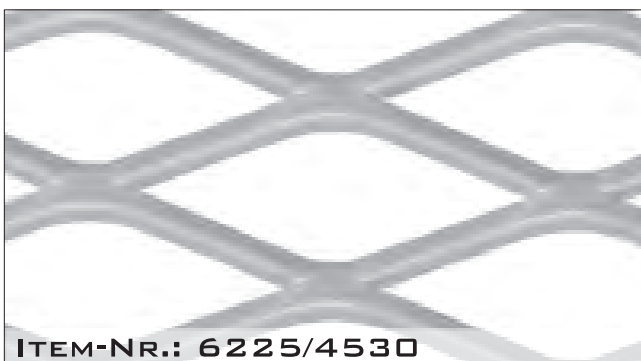
Maximum production width: 2500 mm  
 Maximum sheet thickness: Steel 4,0 mm  
 Aluminium 4,0 mm  
 Stainless steel 3,0 mm



All meshes are available in different material thicknesses (s) and bond widths (c).

Item-Nr.:	l	b	c	s
062/4530	62	21	4,5	3,0 mm
<b>Dimensions c and s are variable e.g.:</b>				
062/6040	62	23	6,0	4,0 mm

Maximum production width: 3000 mm  
 Maximum sheet thickness: Steel 5,0 mm  
 Aluminium 5,0 mm  
 Stainless steel 3,0 mm



All meshes are available in different material thicknesses (s) and bond widths (c).

Item-Nr.:	l	b	c	s
6225/4530	62	25	4,5	3,0 mm
<b>Dimensions c and s are variable e.g.:</b>				
6225/6040	62	25	6,0	4,0 mm

Maximum production width: 2500 mm  
 Maximum sheet thickness: Steel 5,0 mm  
 Aluminium 5,0 mm  
 Stainless steel 3,0 mm

# MEDIUM MESH



All meshes are available in different material thicknesses (s) and bond widths (c).

Item-Nr.:	l	b	c	s
6230/2510	62	30	2,5	1,0 mm
<b>Dimensions c and s are variable e.g.:</b>				
6230/3030	62	30	3,0	3,0 mm

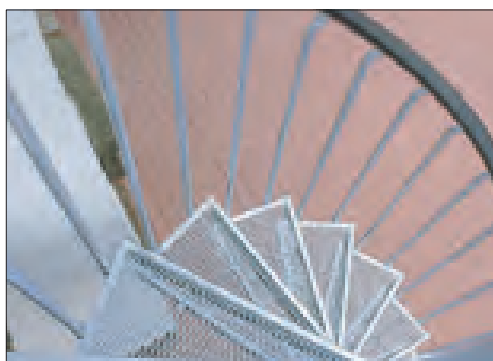
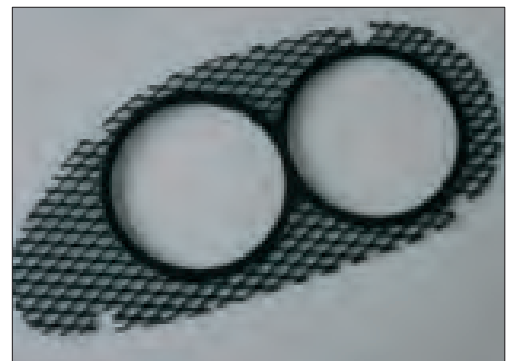
Maximum production width: 2500 mm  
 Maximum sheet thickness: Steel 5,0 mm  
 Aluminium 5,0 mm  
 Stainles steel 3,0 mm



All meshes are available in different material thicknesses (s) and bond widths (c).

Item-Nr.:	l	b	c	s
6623/6030	66	23	6,0	3,0 mm
<b>Dimensions c and s are variable e.g.:</b>				
6623/4040	66	23	4,0	4,0 mm

Maximum production width: 2500 mm  
 Maximum sheet thickness: Steel 5,0 mm  
 Aluminium 5,0 mm  
 Stainles steel 3,0 mm



MAX. SELECTION MAX. FORMAT

# LARGE MESH



All meshes are available in different material thicknesses (s) and bond widths (c).

Item-Nr.:	l	b	c	s
7635/6015	76	35	6,0	1,5 mm
<b>Dimensions c and s are variable e.g.:</b>				
7635/7040	76	35	7,0	4,0 mm

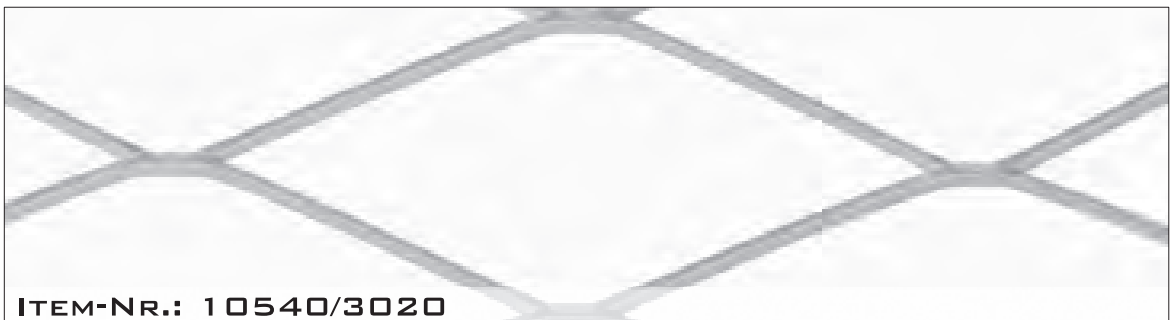
**Maximale Herstellungsbreite:** 3000 mm  
**Maximale Blechstärke:** Steel 5,0 mm  
 Aluminium 5,0 mm  
 Stainless steel 3,0 mm



All meshes are available in different material thicknesses (s) and bond widths (c).

Item-Nr.:	l	b	c	s
9040/6015	90	40	6,0	1,5 mm
<b>Dimensions c and s are variable e.g.:</b>				
9040/8040	90	40	8,0	4,0 mm

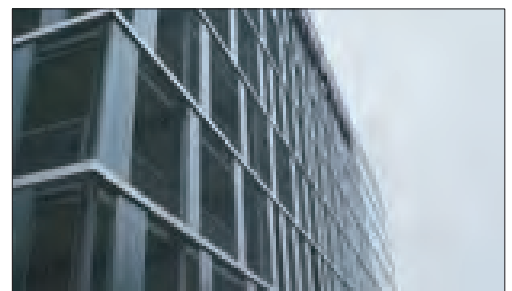
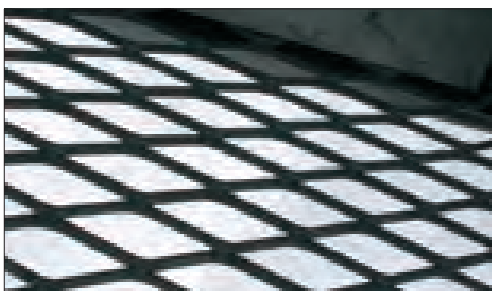
**Maximum production width:** 2500 mm  
**Maximum sheet thickness:** Steel 5,0 mm  
 Aluminium 5,0 mm  
 Stainless steel 3,0 mm



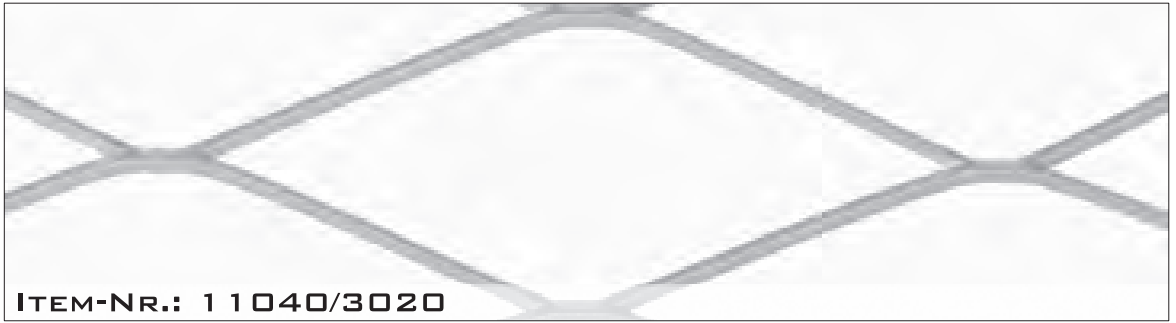
All meshes are available in different material thicknesses (s) and bond widths (c).

**Maximum production width:** 3000 mm  
**Maximum sheet thickness:** Steel 5,0 mm  
 Aluminium 5,0 mm  
 Stainless steel 3,0 mm

Item-Nr.:	l	b	c	s
10540/3020	105	40	3,0	2,0 mm
<b>Dimensions c and s are variable.</b>				



# LARGE MESH



**ITEM-NR.: 11040/3020**

All meshes are available in different material thicknesses (s) and bond widths (c).

**Maximum production width:** 3000 mm

**Maximum sheet thickness:** Steel + Aluminium 5,0 mm  
Stainless steel 3,0 mm

Item-Nr.:	l	b	c	s
-----------	---	---	---	---

11040/3020	110	40	3,0	2,0 mm
------------	-----	----	-----	--------

**Dimensions c and s are variable.**



**ITEM-NR.: 11540/3020**

All meshes are available in different material thicknesses (s) and bond widths (c).

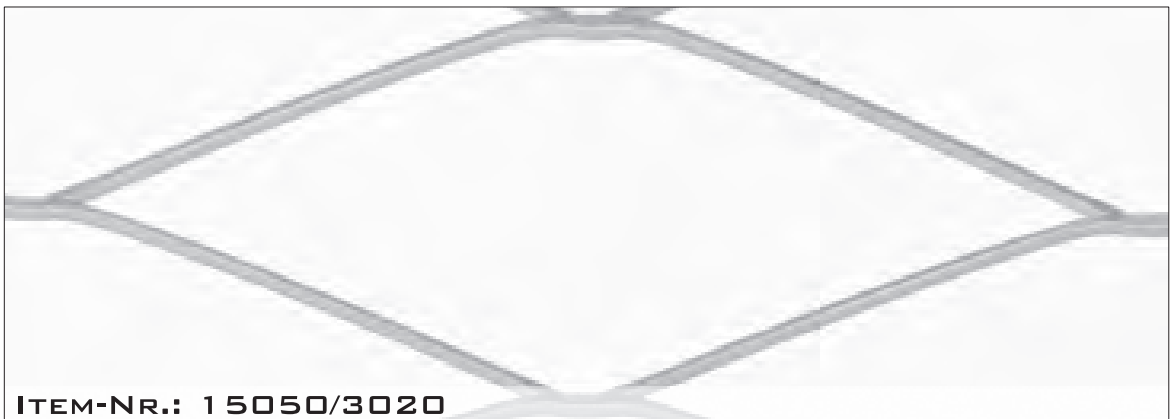
**Maximum production width:** 3000 mm

**Maximum sheet thickness:** Steel + Aluminium 5,0 mm  
Stainless steel 3,0 mm

Item-Nr.:	l	b	c	s
-----------	---	---	---	---

11540/3020	115	40	3,0	2,0 mm
------------	-----	----	-----	--------

**Dimensions c and s are variable.**



**ITEM-NR.: 15050/3020**

All meshes are available in different material thicknesses (s) and bond widths (c).

**Maximum production width:** 3000 mm

**Maximum sheet thickness:** Steel + Aluminium 5,0 mm  
Stainless steel 3,0 mm

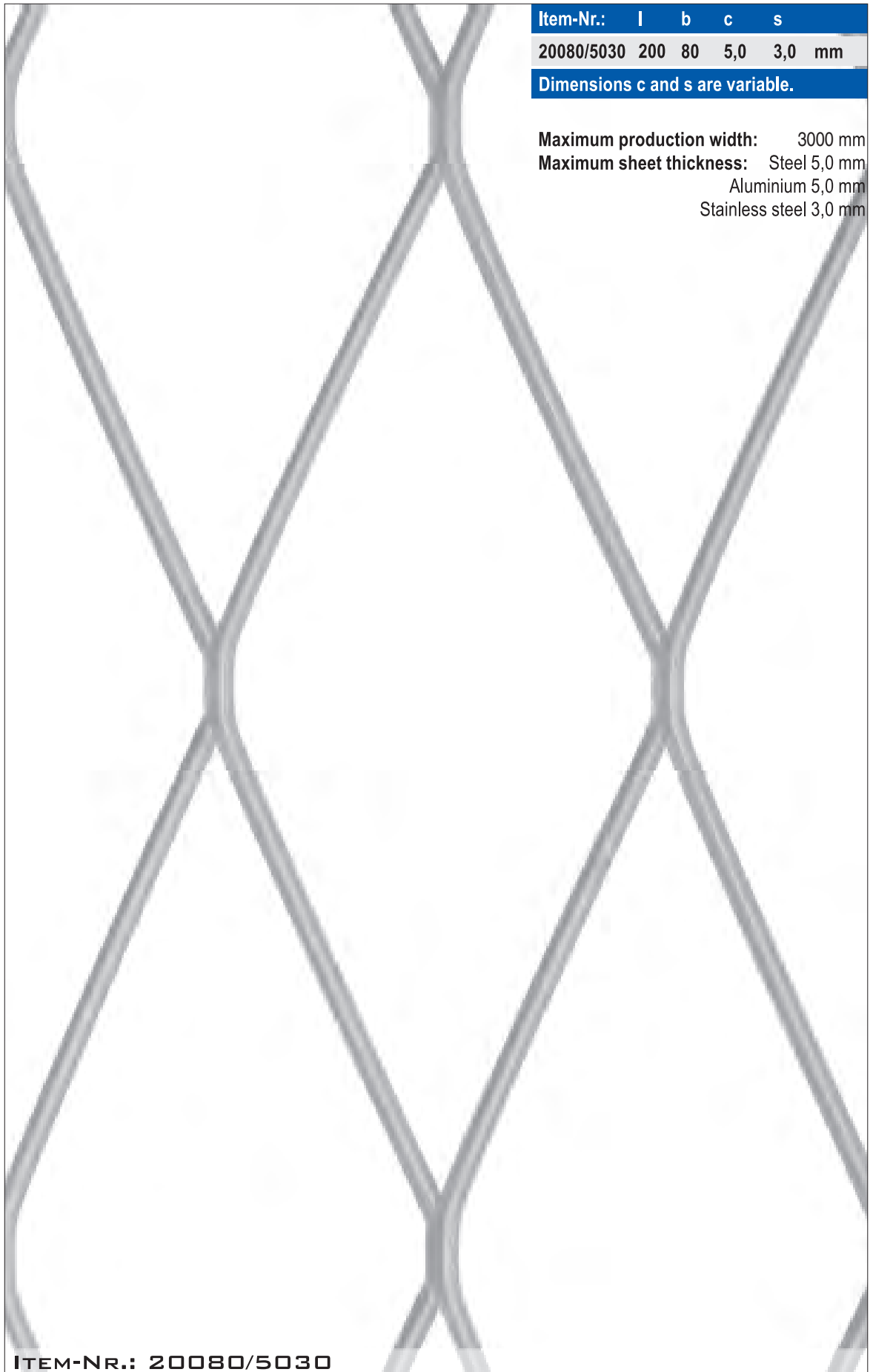
Item-Nr.:	l	b	c	s
-----------	---	---	---	---

15050/3020	150	50	3,0	2,0 mm
------------	-----	----	-----	--------

**Dimensions c and s are variable.**

MAX. SELECTION MAX. FORMAT

## LARGE MESH



Item-Nr.:	l	b	c	s
20080/5030	200	80	5,0	3,0 mm

Dimensions c and s are variable.

Maximum production width: 3000 mm  
Maximum sheet thickness: Steel 5,0 mm  
Aluminium 5,0 mm  
Stainless steel 3,0 mm

ITEM-NR.: 20080/5030

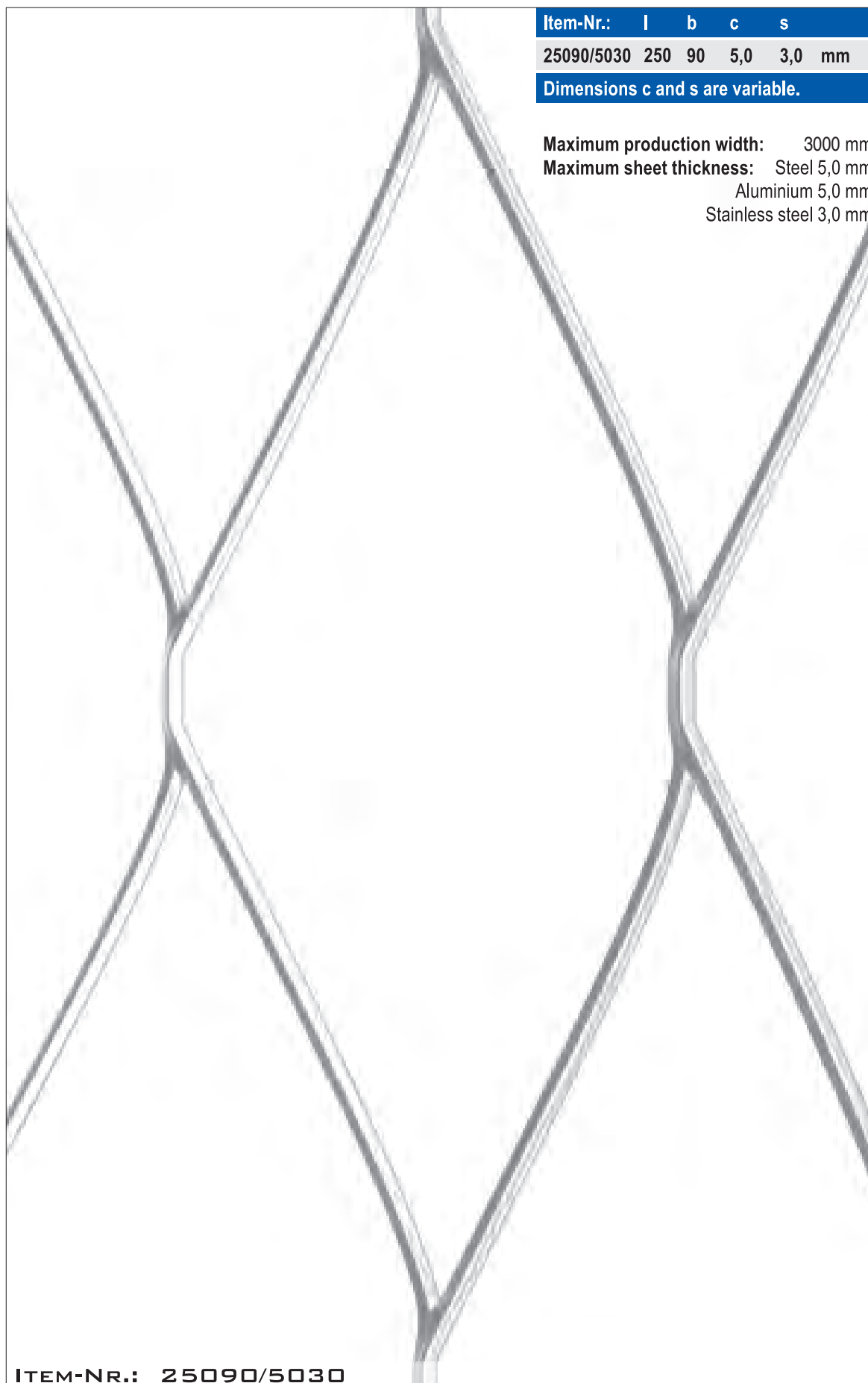
All meshes are available in different material thicknesses (s) and bond widths (c).

MAX. SELECTION MAX. FORMAT

# LARGE MESH



MAX. SELECTION MAX. FORMAT



Item-Nr.:	l	b	c	s
25090/5030	250	90	5,0	3,0 mm

Dimensions c and s are variable.

Maximum production width: 3000 mm  
Maximum sheet thickness: Steel 5,0 mm  
Aluminium 5,0 mm  
Stainless steel 3,0 mm

ITEM-NR.: 25090/5030

All meshes are available in different material thicknesses (s) and bond widths (c).

# LARGE MESH



Item-Nr.:	l	b	c	s
300100/5030	300	100	5,0	3,0 mm

Dimensions c and s are variable.

Maximum production width: 3000 mm  
Maximum sheet thickness: Steel 5,0 mm  
Aluminium 5,0 mm  
Stainless steel 3,0 mm

ITEM-NR.: 300100/5030

All meshes are available in different material thicknesses (s) and bond widths (c).

MAX. SELECTION MAX. FORMAT





# WIDE STRAND MESH



ITEM-NR.: 115/10020

All meshes are available in different material thicknesses (s) and bond widths (c).

**Maximum production width:** 3000 mm  
**Maximum sheet thickness:** Steel 5,0 mm  
 Aluminium 5,0 mm  
 Stainless steel 3,0 mm

Item-Nr.:	l	b	c	s
115/10020	115	42	10,0	2,0 mm
110/10020	110	42	10,0	2,0 mm
105/10020	105	42	10,0	2,0 mm

Dimensions c and s are variable.



ITEM-NR.: 115/18020

All meshes are available in different material thicknesses (s) and bond widths (c).

**Maximum production width:** 3000 mm  
**Maximum sheet thickness:** Steel + Aluminium 3,0 mm  
 Stainless steel 2,0 mm

**Sheet thickness:** Steel + Aluminium 4,0 mm  
**Maximum production width:** 1500 mm

Item-Nr.:	l	b	c	s
115/18020	115	48	18,0	2,0 mm
110/18020	110	48	18,0	2,0 mm
105/18020	105	48	18,0	2,0 mm

Dimensions c and s are variable.



MAX. SELECTION MAX. FORMAT

# WIDE STRAND MESH



ITEM-NR.: 115/24020

All meshes are available in different material thicknesses (s) and bond widths (c).

**Maximum production width:** 3000 mm

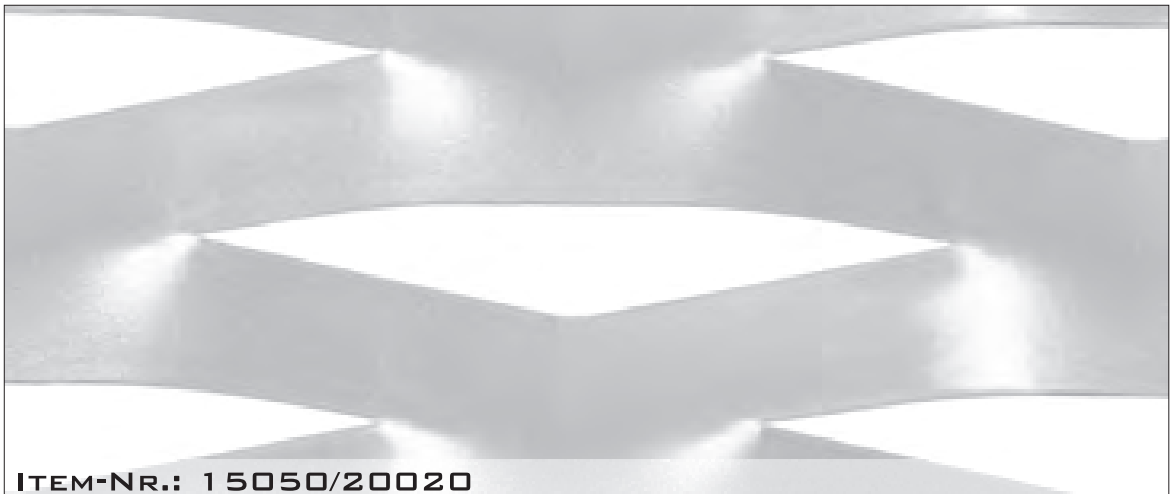
**Maximum sheet thickness:** Steel 3,0 mm

Aluminium 3,0 mm

Stainless steel on request

Item-Nr.:	l	b	c	s
115/24020	115	52	24,0	2,0 mm
110/24020	110	52	24,0	2,0 mm
105/24020	105	52	24,0	2,0 mm

Dimensions c and s are variable.



ITEM-NR.: 15050/20020

All meshes are available in different material thicknesses (s) and bond widths (c).

**Maximum production width:** 3000 mm

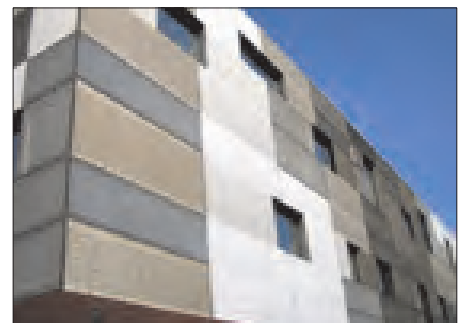
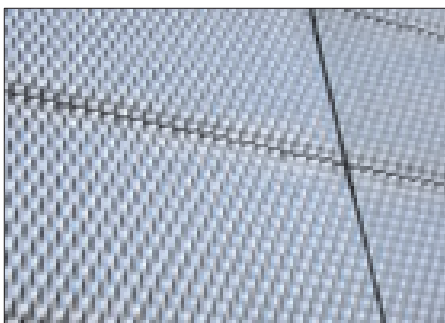
**Maximum sheet thickness:** Steel 5,0 mm

Aluminium 3,0 mm

Stainless steel on request

Item-Nr.:	l	b	c	s
15050/20020	150	60	20,0	2,0 mm

Dimensions c and s are variable.



MAX. SELECTION MAX. FORMAT





# WIDE STRAND MESH



MAX. SELECTION MAX. FORMAT



Item-Nr.:	l	b	c	s
16040/20020	160	40	20,0	2,0 mm

Dimensions c and s are variable.

Maximum production width: 3000 mm  
Maximum sheet thickness: Steel 3,0 mm  
Aluminium 3,0 mm  
Stainless steel on request

ITEM-NR.: 16040/20020

All meshes are available in different material thicknesses (s) and bond widths (c).

# WIDE STRAND MESH



MAX. SELECTION MAX. FORMAT



Item-Nr.:	l	b	c	s
20080/30020	200	87	30,0	2,0 mm

Dimensions c and s are variable.

Maximum production width: 3000 mm  
Maximum sheet thickness: Steel 3,0 mm  
Aluminium 3,0 mm  
Stainless steel on request

ITEM-NR.: 20080/30020

All meshes are available in different material thicknesses (s) and bond widths (c).

# WIDE STRAND MESH



Item-Nr.:	l	b	c	s
25090/35030	250	90	35,0	3,0 mm

Dimensions c and s are variable.

Maximum production width: 3000 mm  
Maximum sheet thickness: Steel 3,0 mm  
Aluminium 3,0 mm  
Stainless steel on request

ITEM-NR.: 25090/35030

All meshes are available in different material thicknesses (s) and bond widths (c).

MAX. SELECTION MAX. FORMAT

# WIDE STRAND MESH



MAX. SELECTION MAX. FORMAT



Item-Nr.:	l	b	c	s
300110/40030	300	110	40,0	3,0 mm

Dimensions c and s are variable.

Maximum production width: 3000 mm  
Maximum sheet thickness: Steel 3,0 mm  
Aluminium 3,0 mm  
Stainless steel on request

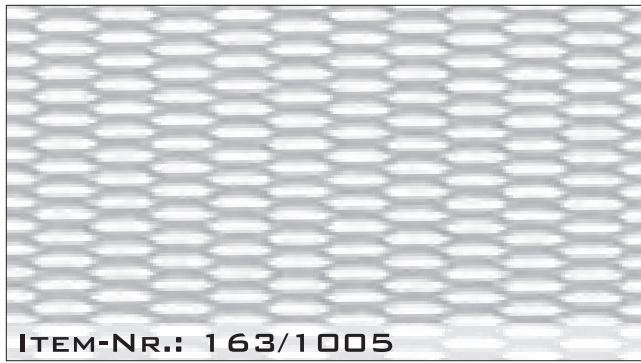
ITEM-NR.: 300110/40030

All meshes are available in different material thicknesses (s) and bond widths (c).





# LONG BOND MESH



All meshes are available in different material thicknesses (s) and bond widths (c).  
The dimension b depends on the opening, so please state the opening.

Item-Nr.:	l	b	c	s
163/1005	16	3	1,0	0,5 mm
<b>Dimensions c and s are variable e.g.:</b>				
163/2510	16	6	2,5	1,0 mm

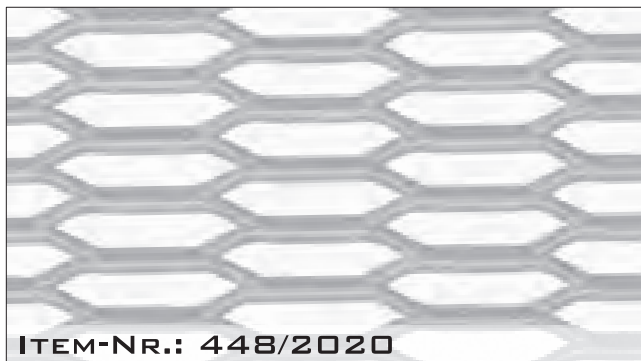
Maximum production width: 1000 mm  
Maximum sheet thickness: Steel 1,5 mm  
Aluminium 1,5 mm  
Stainless steel 0,8 mm



All meshes are available in different material thicknesses (s) and bond widths (c).  
The dimension b depends on the opening, so please state the opening.

Item-Nr.:	l	b	c	s
285/2005	28	5	2,0	0,5 mm
<b>Dimensions c and s are variable e.g.:</b>				
285/2520	28	6	2,5	2,0 mm

Maximum production width: 2000 mm  
Maximum sheet thickness: Steel 2,0 mm  
Aluminium 2,0 mm  
Stainless steel 1,5 mm



All meshes are available in different material thicknesses (s) and bond widths (c).  
The dimension b depends on the opening, so please state the opening.

Item-Nr.:	l	b	c	s
448/2020	44	8	2,0	2,0 mm
<b>Dimensions c and s are variable e.g.:</b>				
448/9030	44	22	9,0	3,0 mm

Maximum production width: 2500 mm  
Maximum sheet thickness: Steel 3,0 mm  
Aluminium 3,0 mm  
Stainless steel 3,0 mm

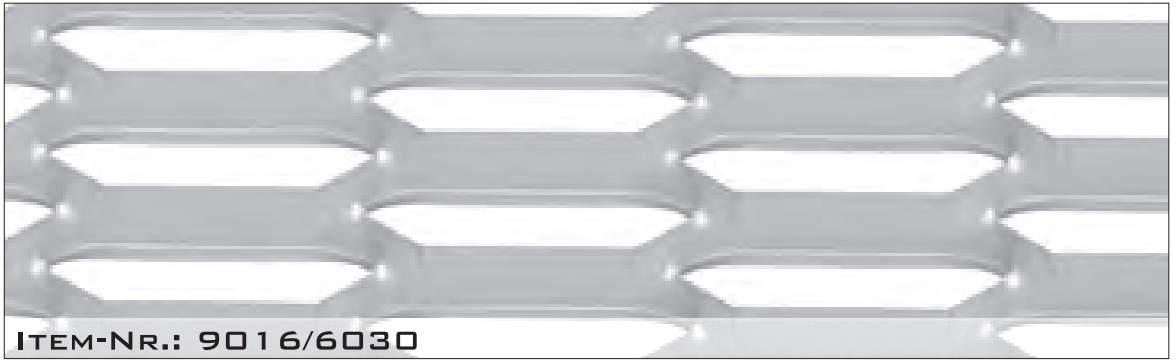


All meshes are available in different material thicknesses (s) and bond widths (c).  
The dimension b depends on the opening, so please state the opening.

Item-Nr.:	l	b	c	s
5210/2020	52	10	2,0	2,0 mm
<b>Dimensions c and s are variable e.g.:</b>				
5210/4030	52	13	4,0	3,0 mm

Maximum production width: 2500 mm  
Maximum sheet thickness: Steel 4,0 mm  
Aluminium 4,0 mm  
Stainless steel 3,0 mm

# LONG BOND MESH



ITEM-NR.: 9016/6030

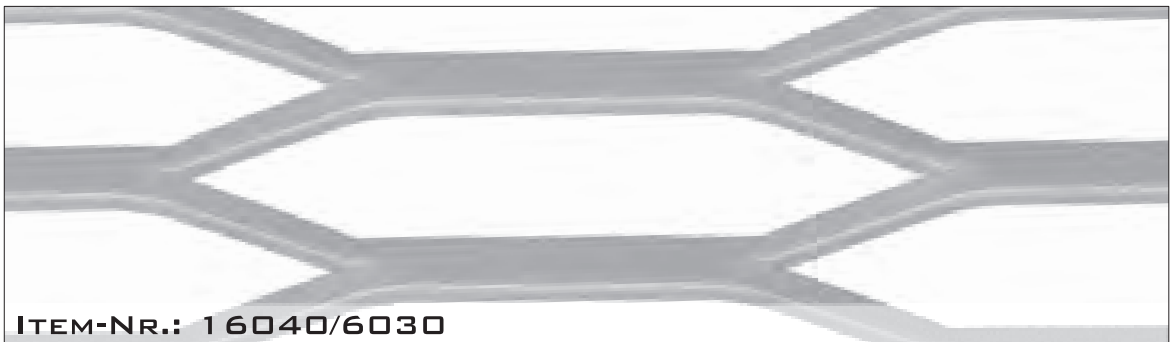
All meshes are available in different material thicknesses (s) and bond widths (c).

**Maximum production width:** 2500 mm

**Maximum sheet thickness:** Steel + Aluminium 4,0 mm  
Stainless steel 2,0 mm

Item-Nr.:	l	b	c	s
9016/6030	90	16	6,0	3,0 mm
<b>Dimensions c and s are variable e.g.:</b>				
9016/3020	90	22	3,0	2,0 mm

The dimension **b** depends on the opening, so please state the opening.



ITEM-NR.: 16040/6030

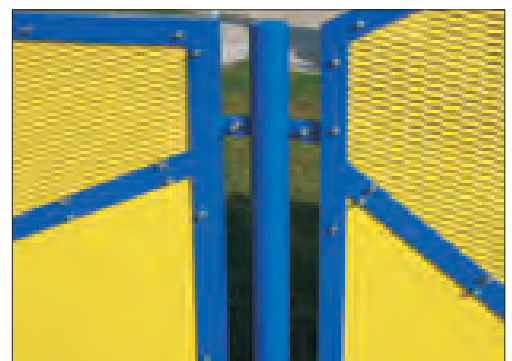
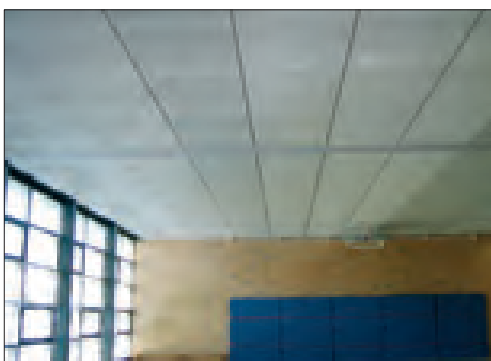
All meshes are available in different material thicknesses (s) and bond widths (c).

**Maximum production width:** 3000 mm

**Maximum sheet thickness:** Steel + Aluminium 4,0 mm  
Stainless steel 2,0 mm

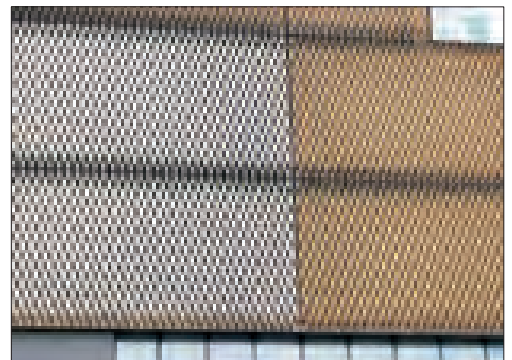
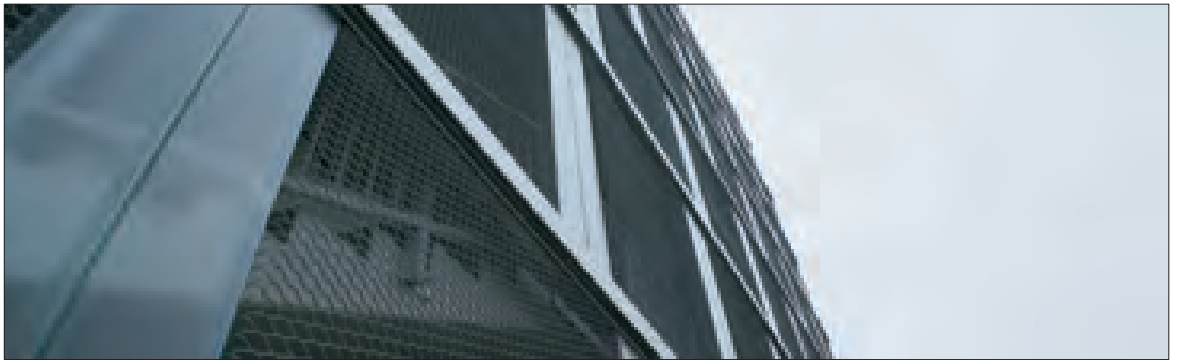
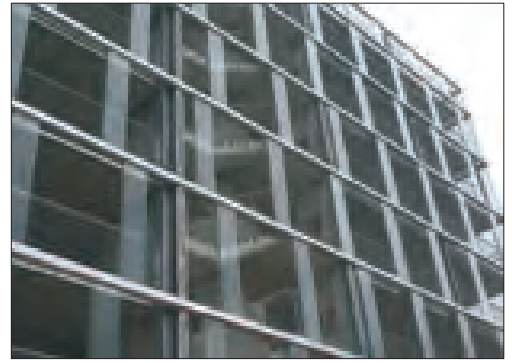
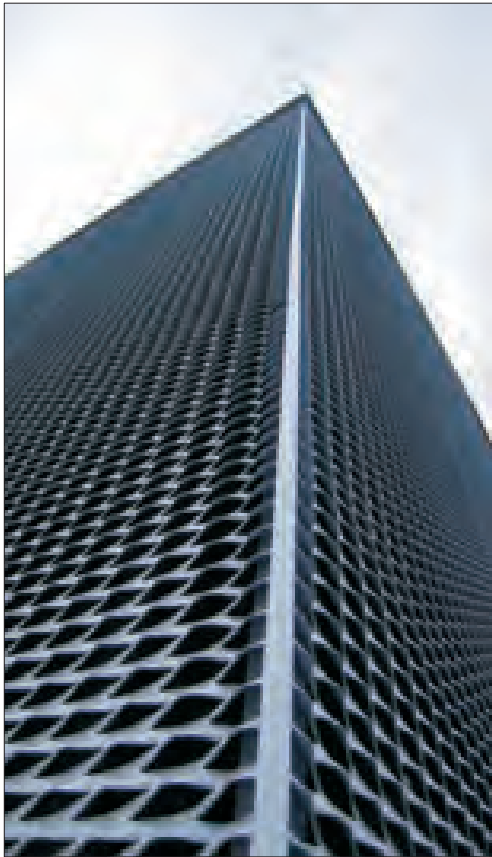
Item-Nr.:	l	b	c	s
16040/6030	160	25	6,0	3,0 mm
<b>Dimensions c and s are variable e.g.:</b>				
16040/3030	160	23	3,0	3,0 mm

The dimension **b** depends on the opening, so please state the opening.



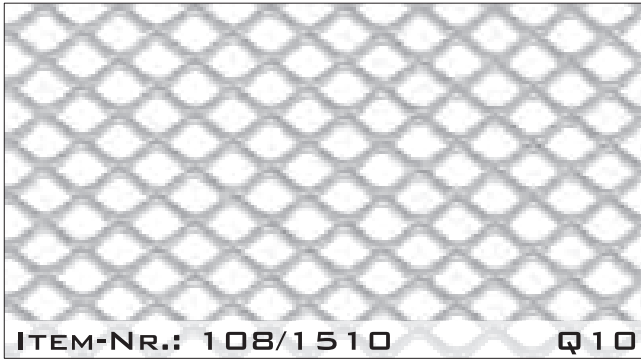
MAX. SELECTION MAX. FORMAT

# GENERAL



MAX. SELECTION MAX. FORMAT

# SQUARE MESH



All meshes are available in different material thicknesses (s) and bond widths (c).

Item-Nr.:	l	b	c	s
108/1510	10	7,2	1,5	1,0 mm
<b>Dimensions c and s are variable e.g.:</b>				
108/2015	10	7,4	2,0	1,5 mm

Maximum production width: 1000 mm  
 Maximum sheet thickness: Steel 1,5 mm  
 Aluminium 1,5 mm



All meshes are available in different material thicknesses (s) and bond widths (c).

Item-Nr.:	l	b	c	s
1612/2010	16	12	2,0	1,0 mm
<b>Dimensions c and s are variable e.g.:</b>				
1612/3020	16	12	3,0	2,0 mm

Maximum production width: 1250mm  
 Maximum sheet thickness: Steel 2,0 mm  
 Aluminium 2,0 mm



All meshes are available in different material thicknesses (s) and bond widths (c).

Item-Nr.:	l	b	c	s
2518/2010	25	18	2,0	1,0 mm
<b>Dimensions c and s are variable e.g.:</b>				
2518/3030	25	18	3,0	3,0 mm

Maximum production width: 1500 mm  
 Maximum sheet thickness: Steel 3,0 mm  
 Aluminium 3,0 mm



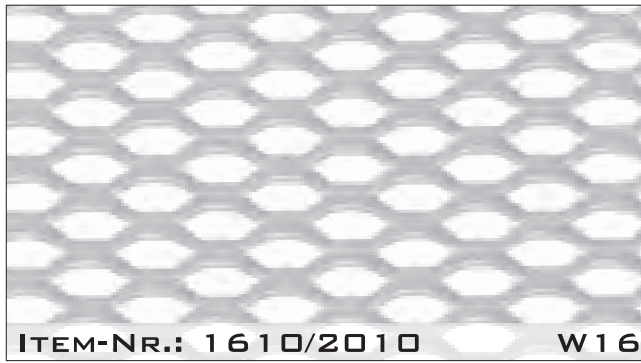
All meshes are available in different material thicknesses (s) and bond widths (c).

Item-Nr.:	l	b	c	s
4030/2515	40	30	2,5	1,5 mm
<b>Dimensions c and s are variable e.g.:</b>				
4030/4030	40	30	4,0	3,0 mm

Maximum production width: 1500 mm  
 Maximum sheet thickness: Steel 3,0 mm  
 Aluminium 3,0 mm

MAX. SECTION MAX. FORMAT

# HONEYCOMB MESH



All meshes are available in different material thicknesses (s) and bond widths (c).

Item-Nr.:	l	b	c	s
1610/2010	16	7	2,0	1,0 mm
<b>Dimensions c and s are variable e.g.:</b>				
1610/2520	16	7	2,5	2,0 mm

Maximum production width: 1250 mm  
 Maximum sheet thickness: Steel 2,0 mm  
 Aluminium 2,0 mm  
 Stainless steel 1,0 mm



All meshes are available in different material thicknesses (s) and bond widths (c).

Item-Nr.:	l	b	c	s
259/1510	25	9	1,5	1,0 mm
<b>Dimensions c and s are variable e.g.:</b>				
259/3020	25	9	3,0	2,0 mm

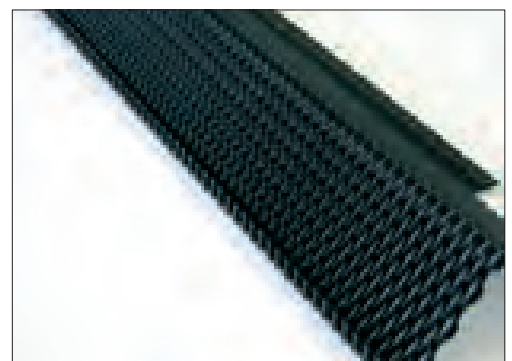
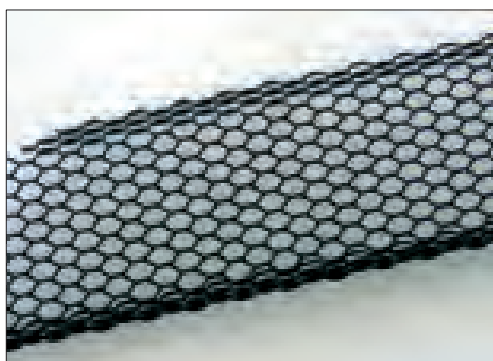
Maximum production width: 1500 mm  
 Maximum sheet thickness: Steel 2,0 mm  
 Aluminium 2,0 mm



All meshes are available in different material thicknesses (s) and bond widths (c).

Item-Nr.:	l	b	c	s
3515/2515	35	15	2,5	1,5 mm
<b>Dimensions c and s are variable e.g.:</b>				
3515/3020	35	15	3,0	2,0 mm

Maximum production width: 1500 mm  
 Maximum sheet thickness: Steel 2,0 mm  
 Aluminium 2,0 mm



MAX. SECTION MAX. FORMAT

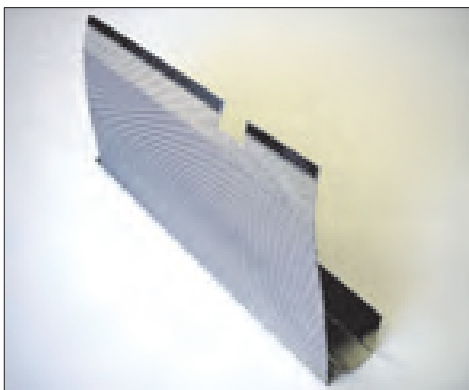
# OPTIONS FOR FURTHER PROCESSING



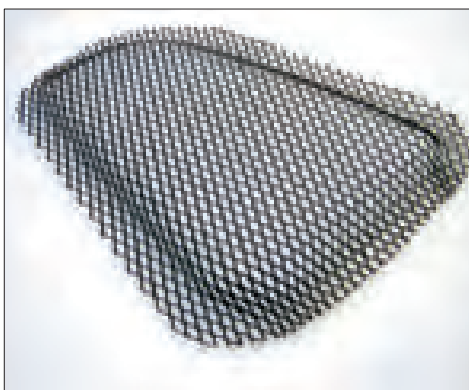
TRUMPF TC 200



SCHRÖDER bending press



- CNC punching
- Specially perforated plates in small job lots
- Shaped metal sheets and expanding sheets
- Bent parts produced using our bending press
- Welding, riveting, cementing
- Surface finishing
- .....
- Ask us!!!!



MAX. SELECTION MAX. FORMAT





**Rau Streckgitter GmbH**

Neulandstr. 34 • D - 74889 Sinsheim  
Phone +49(0) 72 61 / 94 16 - 0 • Fax +49(0) 72 61 / 94 16 - 16  
[www.rau-streckgitter.de](http://www.rau-streckgitter.de) • [info@rau-streckgitter.de](mailto:info@rau-streckgitter.de)

**MAX. SELECTION MAX. FORMAT**